

**Mod R40: Installation Procedure**

SW-4/107640/LSIP

05-03-11

# **SW-4 Series Limit Switch Installation Procedure**

**Shafer™**

[www.ShaferValve.com](http://www.ShaferValve.com)



**EMERSON™**  
Process Management

## Mod R40: Installation Procedure

SW-4/107640/LSIP

05-03-11

# Sw4 Series Limit Switch Assembly

The purpose of this procedure is to guide the replacement/installation of a Shafer Limit Switch assembly.

This procedure is to be used in conjunction with the following Bulletins

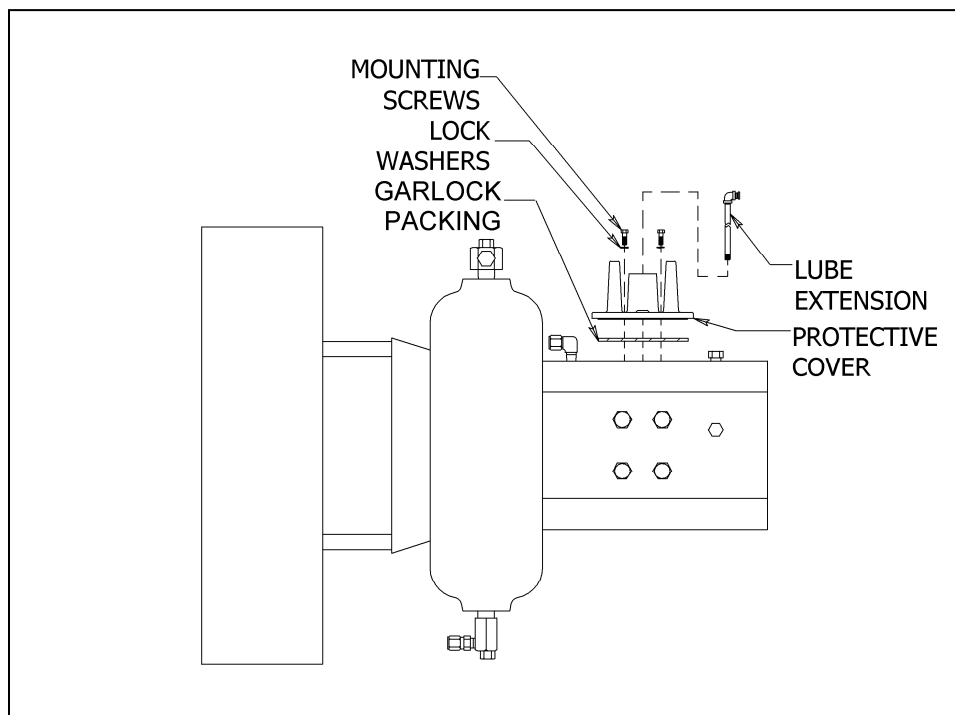
SW4 Series Limit Switch Adjustment Procedure
--

LSAP/107640/SW4
-----------------

### **WARNING: Disconnect Electrical Power Supply Before Beginning Procedure**



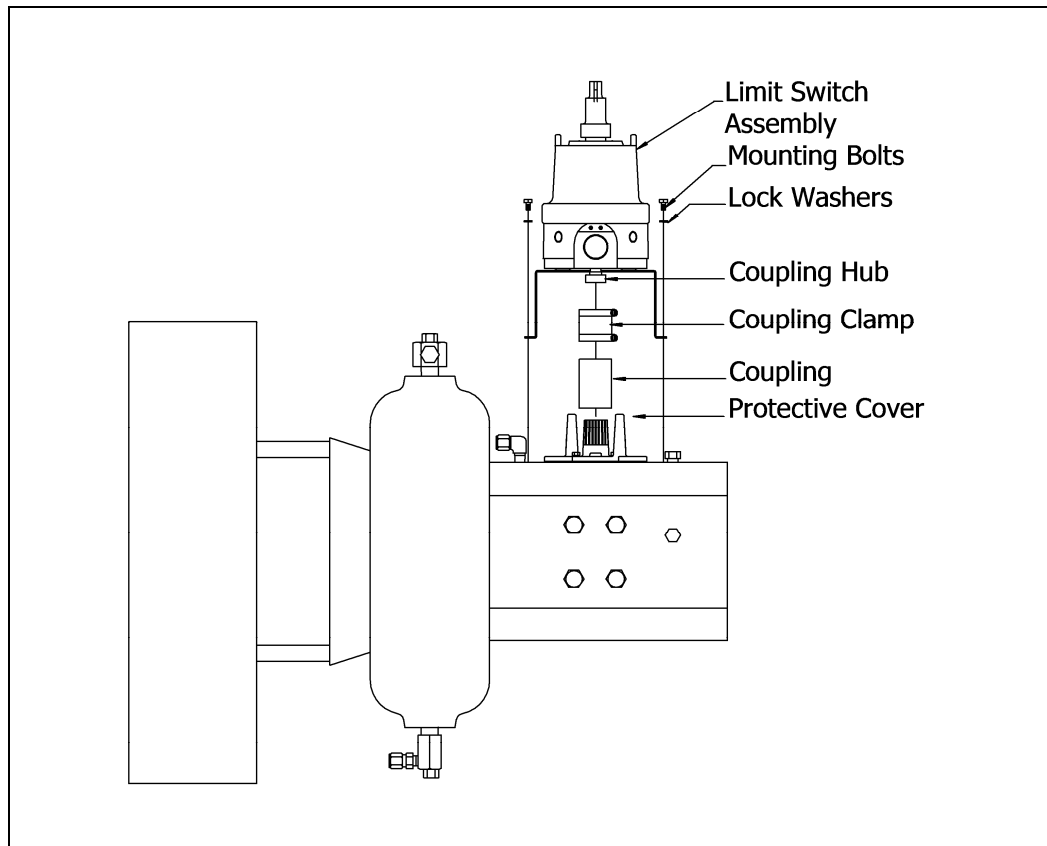
1. Remove the old limit switch assembly, if applicable.
2. Remove the existing Lube Extension, if applicable. (See Figure 1)



**Figure 1: Installing New Protective Cover**

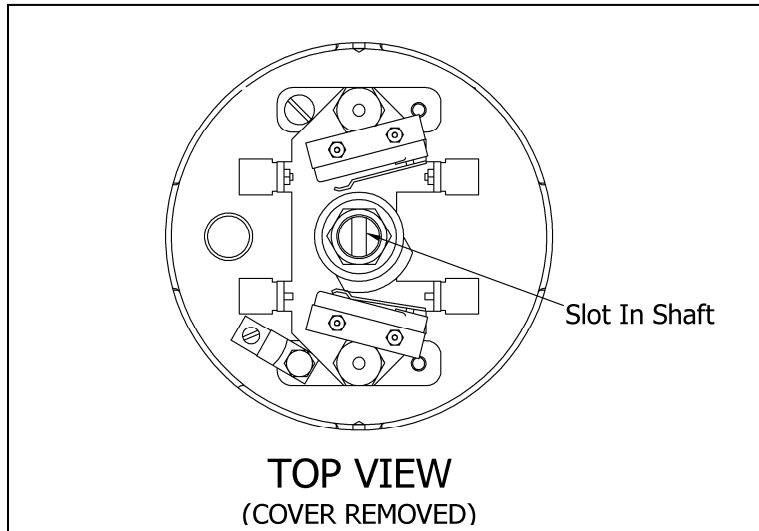
3. Remove two hex cap screws holding the Protective Cover and remove.
4. Install the new Garlock Packing into the recess provided in the new Protective Cover (cut Garlock Packing to fit).
5. Install the new protective cover using the new Cap Screws and Lock Washers supplied. Ensure the direction arrows are in the correct position.
6. Install new Lube Extension, if applicable.

# Sw4 Series Limit Switch Assembly



**Figure 2: Installing Limit Switch Assembly**

7. Slide the Limit Switch Drive Coupling over the center post on the Protective Cover. (see figure 2)
8. Place the Coupling Clamp over the Coupling.
9. Lower the Limit Switch Assembly into position piloting the Coupling hub into the top of the coupling.
10. Align the mounting holes in the Limit Switch Bracket and install the mounting Bolts and Lock Washers. Tighten the bolts.
11. Remove the Limit Switch Assembly's Dome by rotating counter-clockwise.



**Figure 6: Limit Switch Assembly**

12. Looking down at the open Limit Switch assembly note the slot in the top of the shaft. This slot must be aligned inline with, or at 90° of, the pipeline. Once the slot is in line, the Limit Switch Drive Coupling may be tightened.
13. Using the wiring diagram supplied as a reference, make all customer connections required.
14. To complete installation follow the steps provided in SW4 Series Limit Switch Adjustment Procedure # LSAP/107640/SW4.

If any further information is required, please feel free to contact:

**EMERSON PROCESS MANAGEMENT VALVE AUTOMATION, INC.**

2500 Park Avenue West

Mansfield, Ohio 44906

Phone: (419) 529-4311

Fax (419) 529-3688

Please visit our website for up to date product data. [www.shafervalve.com](http://www.shafervalve.com)

All Rights Reserved

The contents of this publication are presented for informational purpose only, and while every effort has been made to ensure their accuracy, they are not to be construed as warranties or guarantees, express or implied, regarding the products or services described herein or their use or applicability. We reserve the right to modify or improve the designs or specifications of such products at any time with out notice.