

Performance Specifications AT-IS Series

Quarter-turn Worm Gear Operators for Manual Operation

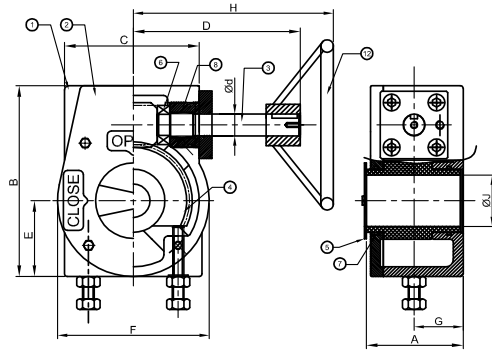


FIGURE (1)

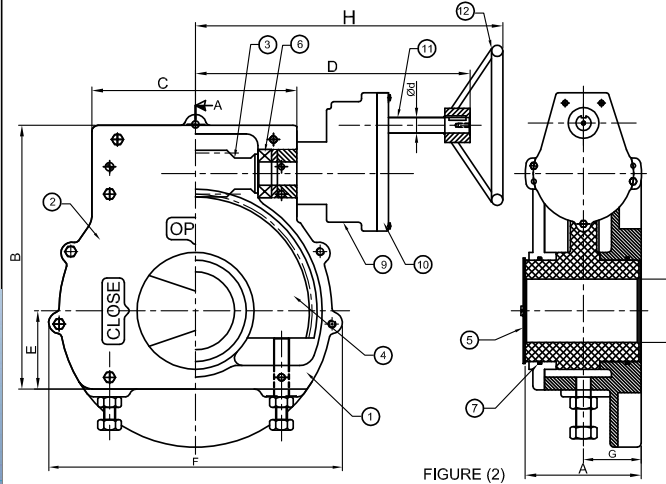
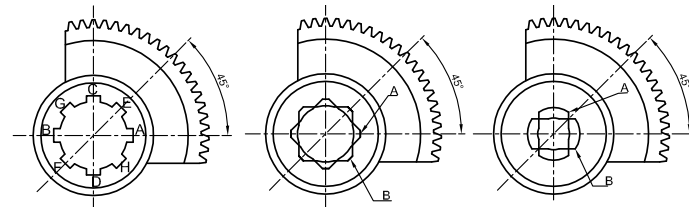


FIGURE (2)

REFER FIGURE (1) FOR MODELS UPTO "AT-90-IS"

REFER FIGURE (2) FOR MODELS ABOVE "AT-90-IS"

MODEL	OUTPUT TORQUE (Nm)	RATIO	MECH. ADVAN TAGE ±10%	TURNS TO CLOSE	ISO 5211 MOUNTING	MAX DRIVE BORE Ø"J'	RECOM-MENDED HANDWHEEL (MM)	Ød	A	B	C	D	E	F	G	H
AT-20-IS	250	33:1	8	8.25	F05,F07	20	Ø175	15	56,5	110	82	146	36	90	26	181
AT-25-IS	500	40:1	10,5	10	F07,F10	30	Ø250	15	69	136	96	160	54	108	35	225
AT-30-IS	700	40:1	10	10	F07, F10, F12	32	Ø350	20	80	143	118	170	45	128	39	250
AT-40-IS	1000	44:1	11,5	11	F10, F12, F14	45	Ø350	25	93	176	133	173	70	140	47	253
AT-50-IS	1500	48:1	12,5	12	F10,F12,F14,F16	50	Ø500	25	89	198	152	200	64	168	45	278
AT-60-IS	2000	60:1	15	15	F12,F14,F16	50	Ø500	25	92	214	156	188	83	176	46	268
AT-80-IS	2800	80:1	22	20	F14,F16, F25	80	Ø500	25	119	245	232	220	84	300	64	300
AT-70-IS	3500	73:1	18	18,25	F14,F16, F25	80	Ø500	25	118	265	206	227	85	300	62	307
AT-90-IS	4000	90:1	22,5	22,5	F16,F25	90	Ø600	25	133	305	268	249	100	342	78	349
AT-80/1/S14S	4500	264:1	60	66	F14,F16, F25	80	Ø500	25	122	265	206	329	85	290	64	409
AT-70/3/S14S	6000	292:1	65	73	F14,F16, F25	80	Ø600	25	118	265	206	327	85	300	62	427
AT-90/1/S14S	8000	300:1	70	75	F16,F25	90	Ø600	25	133	305	268	359	100	342	78	459
AT-100/1/S14S	10000	300:1	75	75	F25,F30	100	Ø600	25	151	348	263	356	110	377	76	456
AT-150/1/S24S	15000	450:1	100	112,5	F25,F30	100	Ø600	25	151	348	263	402	110	377	76	502
AT-250/2/S24S	22500	456:1	120	114	F25,F30,F35	110	Ø600	25	157	424	334	435	133	469	88	555
AT-300/1/S34S	28000	902:1	210	225,5	F30, F35	150	Ø750	30	157	424	334	473	133	469	88	593
AT-350/2/S34S	35000	1114:1	253	278,5	F30, F35	150	Ø750	30	157	424	334	473	133	469	88	593
AT-450/1/S34S	45000	1175:1	275	293,75	F30,F35,F40	150	Ø750	30	203	650	595	516	162	592	100	636
AT-500/1/S34S	50000	1261:1	287	315,25	F30,F35,F40	150	Ø750	30	203	650	595	600	199	706	105	720
AT-600/1/S3.54S	60000	1545:1	340	386,25	F30,F35,F40	150	Ø750	30	203	650	595	654	199	710	105	714
AT-750/1/S44S	75000	1826:1	400	456,5	F40,F48	200	Ø750	30	203	650	595	656	199	706	105	766
AT-1000/1/S44S	100000	2635:1	600	658,75	F40,F48	200	Ø750	30	203	650	595	656	199	706	105	766
AT-1500/1/S54S	150000	4224:1	860	1056	F40,F48,F60	250	Ø900	30	313	890	729	789	276	960	170	899
AT-2000/1/S54S	200000	5498:1	1210	1374,5	F40,F48,F60	250	Ø900	30	313	890	729	789	276	960	170	899
AT-2500/1/S64S	250000	7440:1	1630	1860	F40,F48,F60	250	Ø900	30	313	890	729	789	276	960	170	899
AT-3000/1/S64S	300000	9300:1	2045	2325	F48,F60	260	Ø900	30	385	1154	1006	963	350	1292	175	1063
AT-3500/1/S64S	350000	11284:1	2482	2821	F48,F60	260	Ø1000	30	385	1154	1006	963	350	1292	175	1063



VIEW FROM TOP AT CLOSE POSITION

Sr.	DESCRIPTION	MATERIAL	US Standard	IS Standard
1.	Housing	Ductile Iron	ASTM A536 60-40-18	SG 400/12
2.	Top Cover	Ductile Iron	ASTM A536 60-40-18	SG 400/12
3.	Worm Shaft	Carbon Steel	ASTM A322 4140	40Cr4Mo3
4.	Worm Wheel	Ductile Iron	ASTM A70-50-05	SG 500/7
5.	Indicator	Carbon Steel	ASTM A576 1045	45C8
6.	Thrust Bearing	Special Steel	ASTM A295 52100	-
7.	'O' Ring	NBR (Buna-N)	NBR (Buna-N)	Nitrile
8.	Sintered Bush	Bronze	B148 C95800	-
9.	Spur Housing	Ductile Iron	ASTM A536 60-40-18	SG 400/12
10.	Spur Cover	Ductile Iron	ASTM A536 60-40-18	SG 400/12
11.	Spur Pinion	Carbon Steel	ASTM A322 4140	40Cr4Mo3
12.	Handwheel (Pipe)	Carbon Steel	ASTM A53	IS 2062 Gr B
13.	Fasteners	Stainless Steel	ASTM A276 304	SS304

REF.NO:- C255 A138 03
 REV NO/DT:- 02/07-5-2015
 REV NO/DT:- 01/20-4-2015
 DATE:- 12-3-2015