

# HART Reference Card

00829-0100-4101, Rev AA

July 2009

Rosemount 2051

## Rosemount 2051 Pressure Transmitter with 4-20 mA HART and 1-5 Vdc Low Power Protocol

A check (✓) indicates the basic configuration parameters. At minimum, these parameters should be verified as part of the configuration and startup procedure.

**Table 1. HART Communicator Fast Key Sequence**

Function	4-20 mA HART	1-5 Vdc HART Low Power
✓ Alarm and Saturation Levels	1, 4, 2, 7	N/A
Analog Output Alarm Type	1, 4, 3, 2, 4	1, 4, 3, 2, 4
Burst Mode Control	1, 4, 3, 3, 3	1, 4, 3, 3, 3
Burst Operation	1, 4, 3, 3, 4	1, 4, 3, 3, 4
Custom Meter Configuration	1, 3, 7, 2	N/A
Custom Meter Value	1, 4, 3, 4, 3	N/A
✓ Damping	1, 3, 6	1, 3, 6
Date	1, 3, 4, 1	1, 3, 4, 1
Descriptor	1, 3, 4, 2	1, 3, 4, 2
Digital To Analog Trim (4-20 mA Output)	1, 2, 3, 2, 1	1, 2, 3, 2, 1
Disable Local Span/Zero Adjustment	1, 4, 4, 1, 7	1, 4, 4, 1, 7
Field Device Information	1, 4, 4, 1	1, 4, 4, 1
Full Trim	1, 2, 3, 3	1, 2, 3, 3
Keypad Input – Rerange	1, 2, 3, 1, 1	1, 2, 3, 1, 1
Local Zero and Span Control	1, 4, 4, 1, 7	1, 4, 4, 1, 7
Loop Test	1, 2, 2	1, 2, 2
Lower Sensor Trim	1, 2, 3, 3, 2	1, 2, 3, 3, 2
Message	1, 3, 4, 3	1, 3, 4, 3
Meter Options	1, 4, 3, 4	N/A
Number of Requested Preambles	1, 4, 3, 3, 2	1, 4, 3, 3, 2
Poll Address	1, 4, 3, 3, 1	1, 4, 3, 3, 1
Poll a Multidropped Transmitter	Left Arrow, 4, 1, 1	Left Arrow, 4, 1, 1
✓ Range Values	1, 3, 3	1, 3, 3
Rerange	1, 2, 3, 1	1, 2, 3, 1



**ROSEMOUNT**

www.rosemount.com



**EMERSON**  
Process Management

## Rosemount 2051

Function	4-20 mA HART	1-5 Vdc HART Low Power
Scaled D/A Trim (4–20 mA Output)	1, 2, 3, 2, 2	1, 2, 3, 2, 2
Self Test (Transmitter)	1, 2, 1, 1	1, 2, 1, 1
Sensor Info	1, 4, 4, 2	1, 4, 4, 2
Sensor Temperature	1, 1, 4	1, 1, 4
Sensor Trim Points	1, 2, 3, 3, 5	1, 2, 3, 3, 4
Status	1, 2, 1, 2	1, 2, 1, 2
✓ Tag	1, 3, 1	1, 3, 1
✓ Transfer Function (Setting Output Type)	1, 3, 5	1, 3, 5
Transmitter Security (Write Protect)	1, 3, 4, 4	1, 3, 4, 4
Trim Analog Output	1, 2, 3, 2	1, 2, 3, 2
✓ Units (Process Variable)	1, 3, 2	1, 3, 2
Upper Sensor Trim	1, 2, 3, 3, 3	1, 2, 3, 3, 3
Zero Trim	1, 2, 3, 3, 1	1, 2, 3, 3, 1

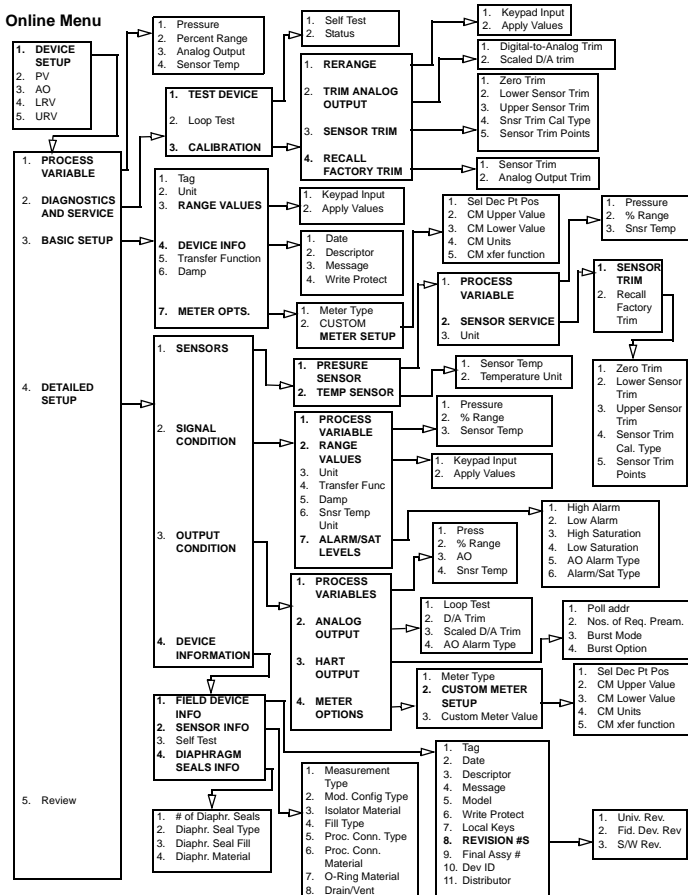
# HART Reference Card

00829-0100-4101, Rev AA

July 2009

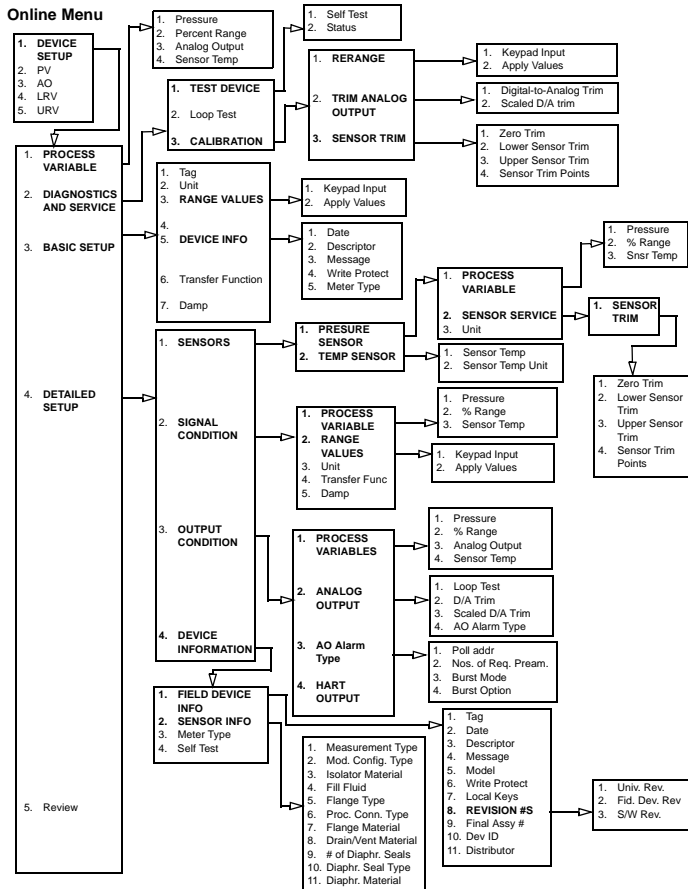
Rosemount 2051

Figure 1. Menu Tree for the 2051, 4-20 mA HART



## Rosemount 2051

Figure 2. Menu Tree for the 2051, 1-5 Vdc HART Low Power



 **WARNING**

Read the entire manual before working with the product. The manual is document number 00809-0100-4101 and can be found at [www.rosemount.com](http://www.rosemount.com). For personal and system safety, and for optimum product performance, make sure you thoroughly understand the contents before installing, using, or maintaining this product.

For technical assistance, contacts are listed below:

**Customer Central**

Technical support, quoting, and order-related questions.  
United States - 1-800-999-9307 (7:00 am to 7:00 pm CST)  
Asia Pacific- 65 777 8211  
Europe/ Middle East/ Africa - 49 (8153) 9390

**North American Response Center**

Equipment service needs.  
1-800-654-7768 (24 hours—includes Canada)  
Outside of these areas, contact your local Emerson Process Management representative.

Standard Terms and Conditions of Sale can be found at [www.rosemount.com/terms\\_of\\_sale](http://www.rosemount.com/terms_of_sale)  
The Emerson logo is a trade mark and service mark of Emerson Electric Co.  
Rosemount and the Rosemount logotype are registered trademarks of Rosemount Inc.  
All other marks are the property of their respective owners.

**Emerson Process Management****Rosemount Inc.**

8200 Market Boulevard  
Chanhassen, MN USA 55317  
T (US) (800) 999-9307  
T (Intl) (952) 906-8888  
F (952) 949-7001

**Emerson Process Management Asia  
Pacific Private Limited**

1 Pandan Crescent  
Singapore 128461  
Tel (65) 777-8211  
Fax (65) 777-0947  
Enquiries@AP.EmersonProcess.com

**Emerson Process Management  
GmbH & Co. OHG**

Argelsrieder Feld 3  
82234 Wessling  
Germany  
T 49 (8153) 9390  
F 49 (8153) 939172

**Beijing Rosemount Far East  
Instrument Co., Limited**

No. 6 North Street,  
Hepingli, Dong Cheng District  
Beijing 100013, China  
T (86) (10) 6428 2233  
F (86) (10) 6422 8586

**ROSEMOUNT®**