

Rosemount 5300/5400 Series FOUNDATION™ Fieldbus Configuration Software

ROSEMOUNT RADAR MASTER

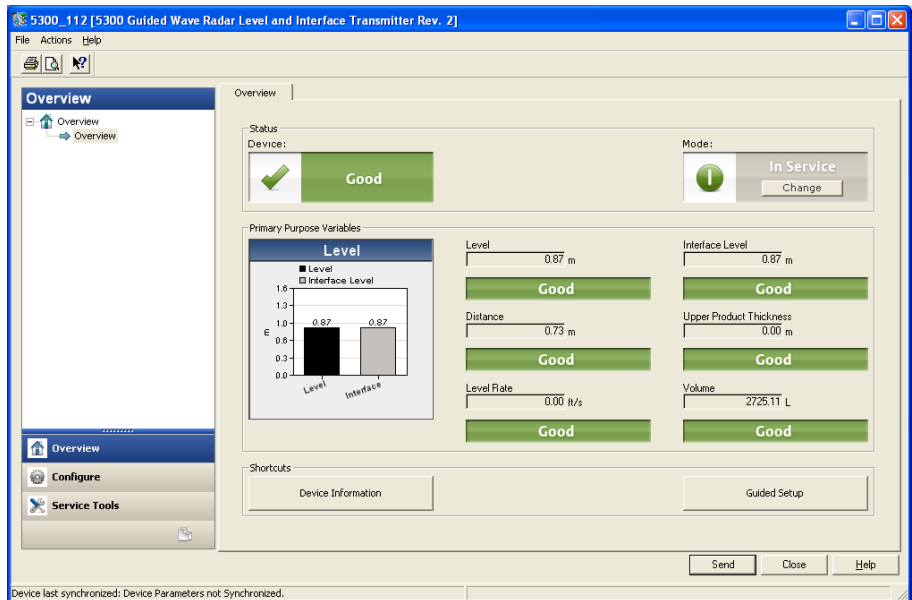
Rosemount Radar Master version 3C2 or later is required when interacting with the Rosemount 5300 FF Device Revision 3 and Rosemount 5400 FF Device Revision 3. The latest version of Rosemount Radar Master is available for download on <http://www.rosemount.com/levelsoftware>.

DEVICE DESCRIPTOR (DD)

Device Descriptors (DD) for Rosemount 5300 FF Device Revision 3 and Rosemount 5400 FF Device Revision 3 are available for download on <http://www.fieldbus.org/>.

Device Dashboard DDs for AMS Device Manager and DeltaV will be available later in the year of 2011. Device Dashboard DDs require AMS Device Manager version 10.5 or later and will be available for download as soon as they are available on <http://www2.emersonprocess.com/en-US/documentation/deviceinstallkits/>.

Figure 1-1. Device Dashboard DD for Rosemount 5300, overview screen in AMS Device Manager.

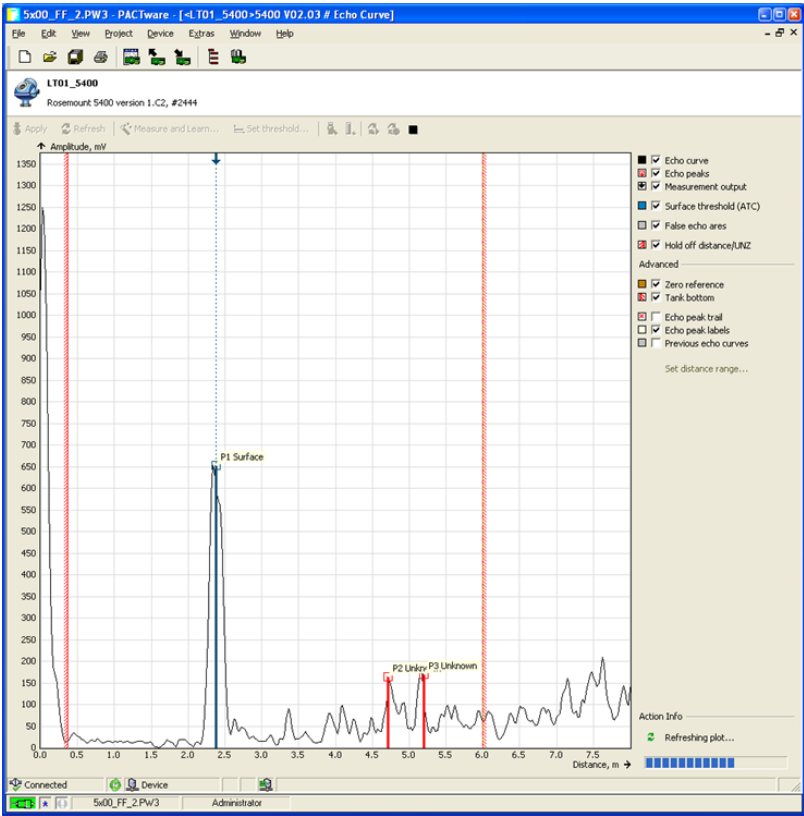


Rosemount 5300/5400 Series

DEVICE TYPE MANAGER (DTM)

Device Type Managers (DTM) will be available later in the year of 2011. Contact your local Rosemount representative to get a copy of the DTM installation package when it becomes available.

Figure 1-2. DTM for the Rosemount 5400, echo curve in PACTWare.



This instruction is a supplement to the Rosemount 5300 Series Reference Manual (Document No. 00809-0100-4530) and the Rosemount 5400 Series Reference Manual (Document No. 00809-0100-4026).

The Emerson logo is a trademark and service mark of Emerson Electric Co. Rosemount and the Rosemount logotype are registered trademarks of Rosemount Inc. All other marks are the property of their respective owners.

Standard Terms and Conditions of Sale can be found at www.rosemount.com/terms_of_sale

© 2011 Rosemount Inc. All rights reserved.

**Emerson Process Management
Rosemount Measurement**
 8200 Market Boulevard
 Chanhassen MN 55317 USA
 Tel (USA) 1 800 999 9307
 Tel (International) +1 952 906 8888
 F +1 952 949 7001

**Emerson Process Management
Shared Services Ltd**
 Heath Place
 Bognor Regis
 West Sussex PO22 9SH
 England
 Tel +44 (1243) 863 121
 Fax +44 (1243) 867 554

**Emerson Process Management
Asia Pacific Pte Ltd**
 1 Pandan Crescent
 Singapore 128461
 Tel +65 6777 8211
 Fax +65 6777 0947
 Service Support Hotline: +65 6770 8711
 Email: Enquiries@AP.EmersonProcess.com

