

AE Series Pin and Sleeve Plugs, Connectors and Receptacles

Weatherproof

600 Vac, 250 Vdc. Pressure Wire Terminals.

NEC:

Rated for Ordinary (Unclassified) Locations

PLUGS AND RECEPTACLES: NEC/CEC ORDINARY LOCATION

Appleton®

Applications

- Designed to supply power to portable or fixed electrical equipment such as:
 - Welders
 - Generators
 - Compressors
 - Pumps
 - Similar apparatus
- Suitable for use in locations where a weatherproof enclosure is required such as:
 - Shipping docks
 - Ports
 - Ship to shore applications

Features

- Available in 30, 60, and 100 Amp units.
- Contacts exert constant pressure along the entire contact surface, providing electrical continuity. Solid brass contacts with beryllium copper springs.
- Choice of receptacle types: weatherproof spring door or raintight screw cap.
- Plug with clamp ring has neoprene gasket. Ring threads onto screw cap receptacle to provide raintight assembly when properly tightened.
- Cable clamps prevent strain on cables and allow easy cable replacement.
- Mounting box gasket protects receptacle from moisture.
- Insulating blocks provide high degree of dielectric and mechanical strength and lowest moisture absorption, lowest arc tracking.
- Choice of several mounting boxes permits different types of installations.
- Floating-type plug contacts self-align to receptacle contacts.
- Available in two grounding styles: Style 1 (shell only) and Style 2 (shell and extra pole).
- Grounding detent springs in Style 1 and Style 2.
- Grounding strap provided in Style 2 permits extra pole grounding.
- Longer ground contact in Style 2 "makes first and breaks last."

Standard Materials

- Plug, connector, receptacle and mounting box housings: copperfree (4/10 of 1% max.) aluminum
- Insulation blocks: fiber glass reinforced phenolic
- Contacts: brass

Standard Finishes

- Aluminum plug, receptacle, connector, and mounting box housings: epoxy powder coat
- Insulating blocks and contacts: natural finish

Options

- Reverse Service: useful where a "hot" plug feeds a dead receptacle. Reverse service is often used for generator applications where the receptacle houses a dead plug interior. Plug houses an energized receptacle interior, which has recessed male contacts to reduce danger of accidental touching. Suffix **-RS** to receptacle or connector.

NEC Compliances

- UL Standard: UL 1682, UL 1686



AE Series 30 Amp Pin and Sleeve Receptacles Connectors and Plugs

Weatherproof

600 Vac, 250 Vdc. Pressure Wire Terminals. Wire Size Range: #14—#8

NEC:
Rated for Ordinary (Unclassified) Locations



| Grounding Style | Wire/Pole | Spring Door Receptacle Only | Screw Cap Receptacle Only | Connector Body Only | Clamping Ring Plug | Plug Cable Dia. (Inches) |
|--------------------------------|-----------|-----------------------------|---------------------------|---------------------|--------------------|--------------------------|
| Style 1 (Shell Only) | 2W, 2P | AE321 | AE327 | APR3251 | AEP3251 | .625 to .750 |
| | 3W, 3P | AE331 | AE337 | APR3351 | AEP3351 | .625 to .750 |
| | 4W, 4P | AE341 | AE347 | APR3451 | AEP3451 | .625 to .750 |
| Style 2 (Shell and Extra Pole) | 2W, 3P | AE332 | AE338 | APR3361 | AEP3361 | .625 to .750 |
| | 3W, 4P | AE342 | AE348 | APR3461 | AEP3461 | .625 to .750 |

AE Series Mounting Boxes



| Hub Size (Inches) | AEE | AERH | AERC | AERA |
|-------------------|-------|--------|--------|--------|
| 1/2 | AEE13 | AERH13 | AERC13 | AERA13 |
| 3/4 | AEE23 | AERH23 | AERC23 | AERA23 |
| 1 | AEE33 | AERH33 | AERC33 | AERA33 |

30 Amp Interiors ①



| Grounding Style | Wire/Pole | Interior Style 1 | | Interior Style 2 | |
|--------------------------------|-----------|------------------|----------|------------------|----------|
| | | Receptacle | Plug | Receptacle | Plug |
| Style 1 (Shell Only) | 2W, 2P | AEI-321 | AEPI-321 | — | — |
| | 3W, 3P | AEI-331 | AEPI-331 | — | — |
| | 4W, 4P | AEI-341 | AEPI-341 | — | — |
| Style 2 (Shell and Extra Pole) | 2W, 3P | — | — | AEI-332 | AEPI-332 |
| | 3W, 4P | — | — | AEI-342 | AEPI-342 |

① Pins and sleeves are not sold separately. Must purchase as a replacement interior.

AE Series 60 Amp Pin and Sleeve Receptacles Connectors and Plugs

Weatherproof

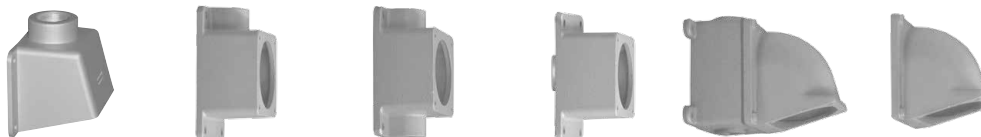
600 Vac, 250 Vdc. Pressure Wire Terminals. Wire Size Range: #8—#4

NEC:
Rated for Ordinary (Unclassified) Locations



| Grounding Style | Wire/Pole | Spring Door Receptacle Only | Screw Cap Receptacle Only | Connector Body Only | Clamping Ring Plug | Plug Cable Dia. (Inches) |
|--------------------------------|-----------|-----------------------------|---------------------------|---------------------|--------------------|--------------------------|
| Style 1 (Shell Only) | 2W, 2P | AE621 | AE627 | APR6252 | AEP6252 | 1.000 to 1.312 |
| | 3W, 3P | AE631 | AE637 | APR6352 | AEP6352 | 1.000 to 1.312 |
| | 4W, 4P | AE641 | AE647 | APR6452 | AEP6452 | 1.000 to 1.312 |
| Style 2 (Shell and Extra Pole) | 2W, 3P | AE632 | AE638 | APR6362 | AEP6362 | 1.000 to 1.312 |
| | 3W, 4P | AE642 | AE648 | APR6462 | AEP6462 | 1.000 to 1.312 |

AE Series Mounting Boxes



| Hub Size (Inches) | AEE | AERH | AERC | AERA | AJA ① | AJA Adapter |
|-------------------|-------|--------|--------|--------|--------|-------------|
| 1 | AEE36 | AERH36 | AERC36 | AERA36 | AJA310 | AJA100 |
| 1-1/4 | AEE46 | AERH46 | AERC46 | AERA46 | AJA410 | AJA100 |
| 1-1/2 | AEE56 | AERH56 | AERC56 | AERA56 | AJA510 | AJA100 |
| 2 | — | — | — | — | AJA610 | AJA100 |

60 Amp Interiors ②



| Grounding Style | Wire/Pole | Interior Style 1 | | Interior Style 2 | |
|--------------------------------|-----------|------------------|----------|------------------|----------|
| | | Receptacle | Plug | Receptacle | Plug |
| Style 1 (Shell Only) | 2W, 2P | AEI-621 | AEPI-621 | — | — |
| | 3W, 3P | AEI-631 | AEPI-631 | — | — |
| | 4W, 4P | AEI-641 | AEPI-641 | — | — |
| Style 2 (Shell and Extra Pole) | 2W, 3P | — | — | AEI-632 | AEPI-632 |
| | 3W, 4P | — | — | AEI-642 | AEPI-642 |

① AJA Feed Thru box furnished with one close-up plug in bottom recessed hub.
② Pins and sleeves are not sold separately. Must purchase as a replacement interior.

AE Series 100 Amp Pin and Sleeve Receptacles Connectors and Plugs

Weatherproof

600 Vac, 250 Vdc. Pressure Wire Terminals. Wire Size Range: #3—#1

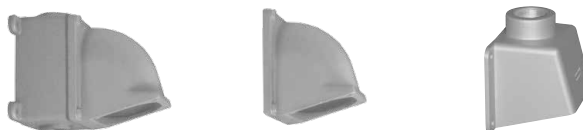
NEC:

Rated for Ordinary (Unclassified) Locations



| Grounding Style | Wire/Pole | Spring Door Receptacle Only | Screw Cap Receptacle Only | Connector Body Only | Clamping Ring Plug | Plug Cable Dia. (Inches) |
|-----------------------------------|-----------|-----------------------------|---------------------------|---------------------|--------------------|--------------------------|
| Style 1 (Shell Only) | 2W, 2P | AE1021 | AE1027 | APR10253 | AEP10253 | .875, 1.437 to 1.750 |
| | 3W, 3P | AE1031 | AE1037 | APR10353 | AEP10353 | .875, 1.437 to 1.750 |
| | 4W, 4P | AE1041 | AE1047 | APR10453 | AEP10453 | .875, 1.437 to 1.750 |
| Style 2 (Shell and Extra Pole) | 2W, 3P | AE1032 | AE1038 | APR10363 | AEP10363 | .875, 1.437 to 1.750 |
| | 3W, 4P | AE1042 | AE1048 | APR10463 | AEP10463 | .875, 1.437 to 1.750 |

AE Series Mounting Boxes



| Hub Size (Inches) | AJA ① | AJA Adapter | AEE |
|-------------------|--------|-------------|-------|
| 1 | AJA310 | AJA100 | AEE36 |
| 1-1/4 | AJA410 | AJA100 | AEE46 |
| 1-1/2 | AJA510 | AJA100 | AEE56 |
| 2 | AJA610 | AJA100 | — |

100 Amp Interiors ②



| Grounding Style | Wire/Pole | Interiors Style 1 | | Interiors Style 2 | |
|-----------------------------------|-----------|-------------------|-----------|-------------------|-----------|
| | | Receptacle | Plug | Receptacle | Plug |
| Style 1 (Shell Only) | 2W, 2P | AEI-1021 | AEPI-1021 | — | — |
| | 3W, 3P | AEI-1031 | AEPI-1031 | — | — |
| | 4W, 4P | AEI-1041 | AEPI-1041 | — | — |
| Style 2 (Shell and Extra Pole) | 2W, 3P | — | — | AEI-1032 | AEPI-1032 |
| | 3W, 4P | — | — | AEI-1042 | AEPI-1042 |

① AJA Feed Thru box furnished with one close-up plug in bottom recessed hub.

② Pins and sleeves are not sold separately. Must purchase as a replacement interior.

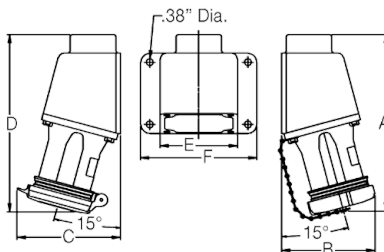
AE Series 30, 60, and 100 Amp Receptacle

Pin and Sleeve Plugs, Connectors and Receptacles

NEC:
Rated for Ordinary (Unclassified) Locations

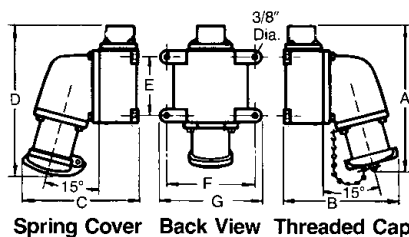
Dimensions in Millimeters (Inches)

Receptacle Mounted on AEE Box



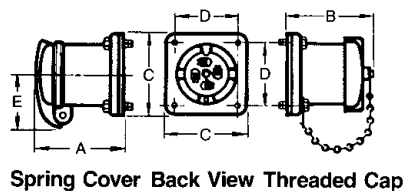
| Amp | Dimensions in Millimeters (Inches) | | | | | |
|-----|------------------------------------|--------------|--------------|---------------|--------------|--------------|
| | A | B | C | D | E | F |
| 30 | 174.7 (6.88) | 87.6 (3.45) | 100.3 (3.95) | 181.1 (7.13) | 107.9 (4.25) | 127.0 (5.00) |
| 60 | 247.6 (9.75) | 120.1 (4.73) | 126.4 (4.98) | 254.0 (10.00) | 136.6 (5.38) | 162.0 (6.38) |

Receptacle Mounted on AJA-AJAC Box



| Amp | Dimensions in Millimeters (Inches) | | | | | | |
|-----|------------------------------------|--------------|--------------|---------------|--------------|--------------|--------------|
| | A | B | C | D | E | F | G |
| 60 | 225.5 (8.88) | 215.9 (8.50) | 215.9 (8.50) | 273.0 (10.75) | 123.9 (4.88) | 174.7 (6.88) | 200.1 (7.88) |
| 100 | 241.3 (9.50) | 231.9 (9.13) | 238.2 (9.38) | 290.5 (11.44) | 123.9 (4.88) | 174.7 (6.88) | 200.1 (7.88) |

AE Receptacle



| Amp | Dimensions in Millimeters (Inches) | | | | |
|-----|------------------------------------|--------------|--------------|-------------|-------------|
| | A | B | C | D | E |
| 30 | 90.4 (3.56) | 87.3 (3.44) | 85.9 (3.38) | 69.0 (2.72) | 55.6 (2.19) |
| 60 | 115.8 (4.56) | 111.2 (4.38) | 114.3 (4.50) | 88.9 (3.50) | 68.3 (2.69) |
| 100 | 136.6 (5.38) | 131.8 (5.19) | 114.3 (4.50) | 88.9 (3.50) | 71.3 (2.81) |

PLUGS AND RECEPTACLES: NEC/CEC ORDINARY LOCATION

Appleton

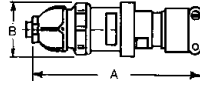
AE Series 30, 60, and 100 Amp Connector, Plug and Mounting Box

Pin and Sleeve Plugs, Connectors and Receptacles

NEC:
Rated for Ordinary (Unclassified) Locations

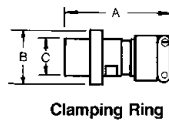
Dimensions in Millimeters (Inches)

APC Cable Connector



| Amp | Dimensions in Millimeters (Inches) | |
|-----|------------------------------------|--------------|
| | A | B |
| 30 | 234.9 (9.25) | 74.6 (2.94) |
| 60 | 304.8 (12.00) | 93.7 (3.69) |
| 100 | 355.6 (14.00) | 104.9 (4.13) |

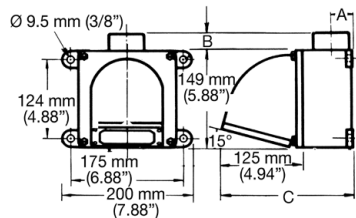
AEP Plug



Clamping Ring

| Amp | Dimensions in Millimeters (Inches) | | |
|-----|------------------------------------|--------------|-------------|
| | A | B | C |
| 30 | 152.4 (6.00) | 81.0 (3.19) | 54.8 (2.16) |
| 60 | 152.4 (6.00) | 81.0 (3.19) | 54.8 (2.16) |
| 100 | 227.0 (8.94) | 107.9 (4.25) | 79.5 (3.13) |

AJAC and AJA Mounting Boxes ①



| Amp | Hub Size (Inches) | Dimensions in Millimeters (Inches) | | |
|------------|-------------------|------------------------------------|-------------|-------------|
| | | A | B ① | C |
| 60 and 100 | 1 | 28.7 (1.13) | 14.2 (0.56) | 203.2 (8.0) |
| | 1-1 (4) | 28.7 (1.13) | 14.2 (0.56) | 203.2 (8.0) |
| | 1-1 (2) | 38.1 (1.50) | 14.2 (0.56) | 203.2 (8.0) |
| | 2 | 38.1 (1.50) | 14.2 (0.56) | 203.2 (8.0) |

① AJA has two hubs. Close-up plug furnished in bottom recessed hub.

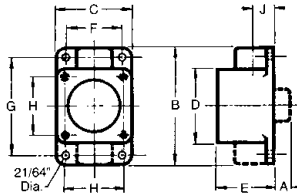
AE Series Mounting Box

For AE Series 30, 60, and 100 Amp Receptacles

NEC:
Rated for Ordinary (Unclassified) Locations

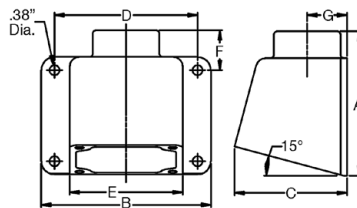
Dimensions in Millimeters (Inches)

AERA ①, AERC and AERH Mounting Boxes



| Amp | Hub Size (Inches) | Dimensions in Millimeters (Inches) | | | | | | | | |
|-----|-------------------|------------------------------------|--------------|--------------|--------------|-------------|-------------|--------------|-------------|-------------|
| | | A ① | B | C | D | E | F | G | H | J |
| 30 | 1/2 | 17.5 (0.69) | 134.8 (5.31) | 85.8 (3.38) | 85.8 (3.38) | 63.5 (2.50) | 66.8 (2.63) | 115.8 (4.56) | 69.0 (2.72) | 23.8 (0.94) |
| 30 | 3/4 | 19.0 (0.75) | 134.8 (5.31) | 85.8 (3.38) | 85.8 (3.38) | 63.5 (2.50) | 66.8 (2.63) | 115.8 (4.56) | 69.0 (2.72) | 23.8 (0.94) |
| 30 | 1 | 20.5 (0.81) | 134.8 (5.31) | 85.8 (3.38) | 85.8 (3.38) | 63.5 (2.50) | 66.8 (2.63) | 115.8 (4.56) | 69.0 (2.72) | 23.8 (0.94) |
| 60 | 1 | 20.5 (0.81) | 165.1 (6.50) | 107.9 (4.25) | 107.9 (4.25) | 79.5 (3.13) | 88.9 (3.50) | 149.3 (5.88) | 88.9 (3.50) | 35.0 (1.38) |
| 60 | 1-1/4 | 23.8 (0.94) | 165.1 (6.50) | 107.9 (4.25) | 107.9 (4.25) | 79.5 (3.13) | 88.9 (3.50) | 149.3 (5.88) | 88.9 (3.50) | 35.0 (1.38) |
| 60 | 1-1/2 | 25.4 (1.00) | 165.1 (6.50) | 107.9 (4.25) | 107.9 (4.25) | 79.5 (3.13) | 88.9 (3.50) | 149.3 (5.88) | 88.9 (3.50) | 35.0 (1.38) |

AEE Mounting Box



| Amp | Hub Size (Inches) | Dimensions in Millimeters (Inches) | | | | | | |
|------------|-------------------|------------------------------------|--------------|--------------|--------------|--------------|-------------|-------------|
| | | A | B | C | D | E | F | G |
| 30 | 1/2, 3/4, 1 | 104.6 (4.12) | 127.0 (5.00) | 84.5 (3.33) | 107.9 (4.25) | 85.8 (3.38) | 29.9 (1.18) | 27.9 (1.10) |
| 60 and 100 | 1, 1-1/4, 1-1/2 | 137.4 (5.41) | 162.0 (6.38) | 107.4 (4.23) | 136.6 (5.38) | 107.9 (4.25) | 38.1 (1.50) | 38.1 (1.50) |

① Dimension "A" for AERA only.