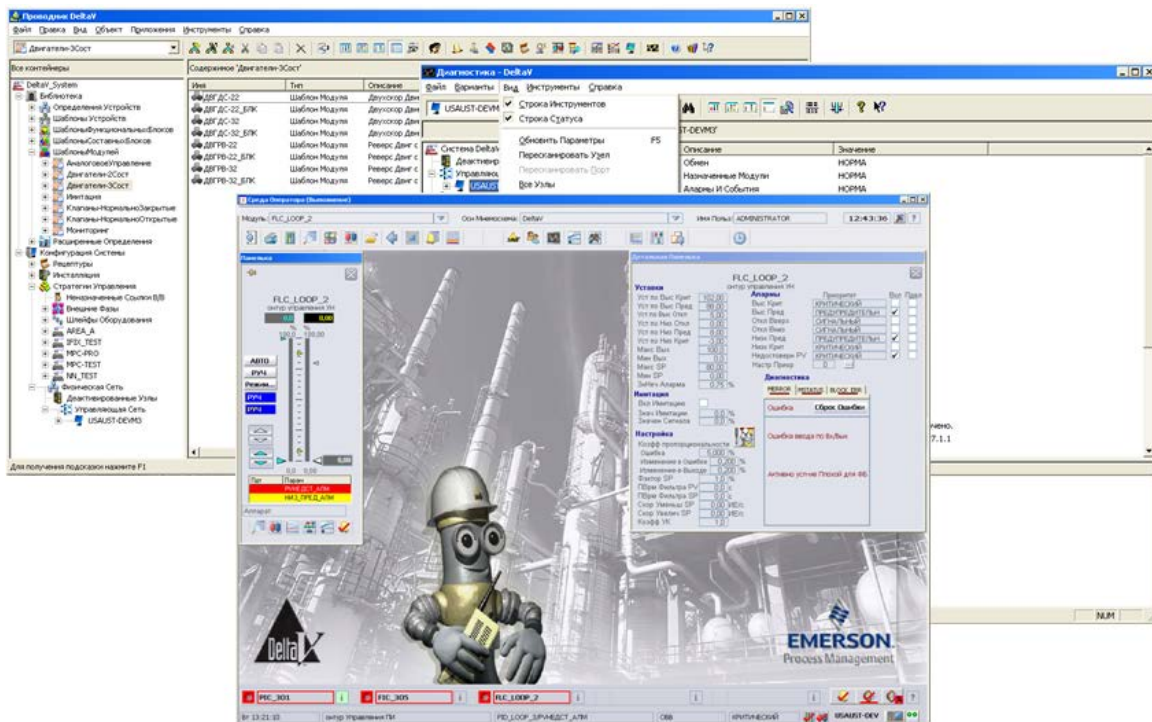


DeltaV™ 12.3.1 With AMS Device Manager 12.0.1 Russian



The DeltaV system makes automation easy using Russian operator, diagnostic and configuration applications.

- Operate your DeltaV™ System in Russian
- Diagnose and tune the DeltaV System in Russian
- Configure the DeltaV System in Russian
- Configure and troubleshoot smart devices with AMS Device Manager v12.0.1 in Russian

The DeltaV v12.3.1 system software offers operator, diagnostic and configuration applications in Russian.

View DeltaV Operate graphics, faceplates, alarm summaries, active batches and detail displays in Russian. Trends, alarms and events are recorded and viewed in Russian.

You can also troubleshoot and configure your DeltaV system, and view Microsoft Windows information, such as menus and error messages in the language you know best – Russian.

Introduction

Is English a foreign language to your operators, technicians and engineers? Are you tired of having to use English keyboards and operating systems?

AMS Device Manager provides integrated device configuration and troubleshooting, along with access to Alert Monitor, Audit Trail, and SNAP-ON applications.

Easily upgrade your DeltaV 8.4 (including AMSinside) Russian to DeltaV 12.3.1 and AMS Device Manager v12.0.1.

Benefits

Operator applications in Russian. Log on to the DeltaV system in Russian. State-of-the-art graphics, trends, process and device alarms, and batch and campaign operation are all in Russian, making the operators experience completely natural. Trends, alarms and events are recorded and viewed in Russian. And the unique DeltaV Flexlock feature securely locks the operator into the system. This ensures system integrity.

All of the words typically seen and used by operators are in Russian. This includes tags and descriptors, alarm messages, operational commands such as open, abort, stop, etc. Any menus in the localized applications are also in Russian.

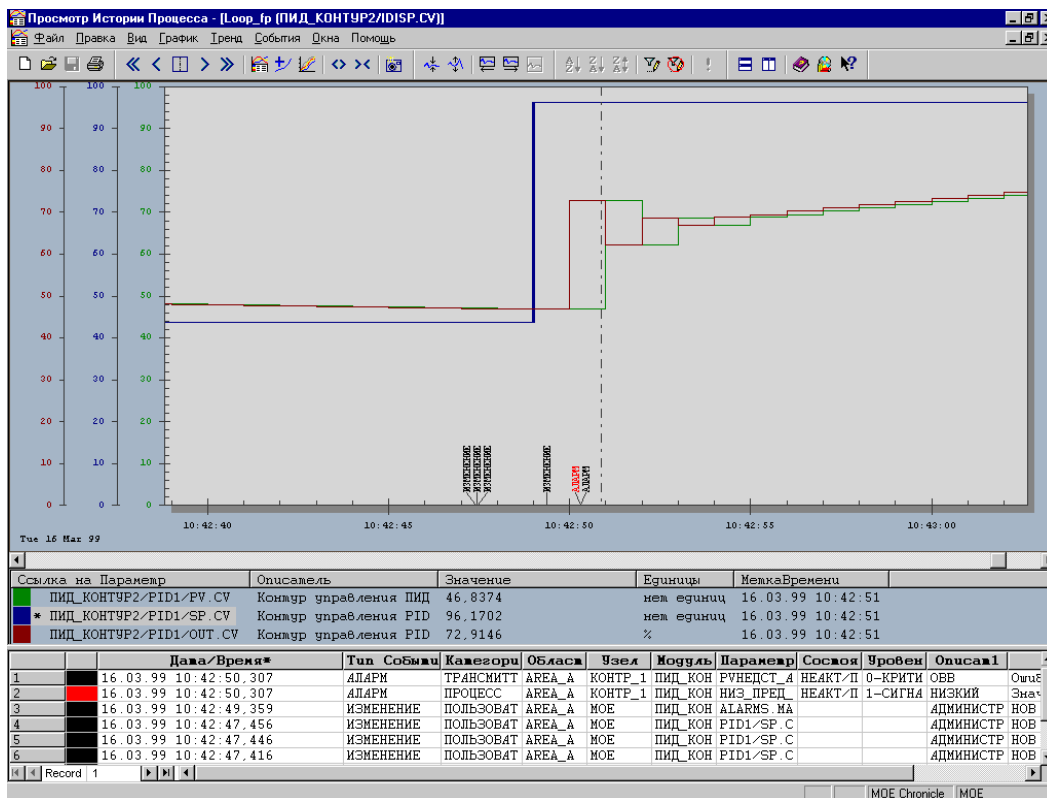
Diagnose and tune the DeltaV system in Russian. Troubleshoot your DeltaV system, tune your control loops with DeltaV Tune and view the on-line conditions of your fieldbus devices in Russian.

Configure the DeltaV system in Russian. Configure your entire system using your native language. Whether creating graphics, control strategies or user security, all configuration menus, dialogs, etc., are in Russian.

Configure and troubleshoot smart devices with AMS Device Manager v12.0.1. Use AMS Device Manager in Russian, including Alert Monitor and Audit Trail to manage your intelligent devices. Device screens and SNAP-ON applications are translated by the manufacturer and some may appear in English.

Runs on Microsoft Windows 7 with Multilingual User Interface (MUI) Pack in Russian. DeltaV v12.3.1 and AMS Device Manager v12.0.1 run on Microsoft Multilingual User Interface (MUI) software in Russian with either Windows XP and Server 2003 or Microsoft Windows Vista and Server 2008. Workstations and servers are provided with English versions of Operating Systems and MUI software.

The Windows MUI Pack provides most of the operating system user interface — including the Start and Programs menus, alerts and dialog boxes, along with Help — in Russian. Since the underlying operating system is in English, any needed operating system updates are offered concurrently for all DeltaV systems, regardless of localization.

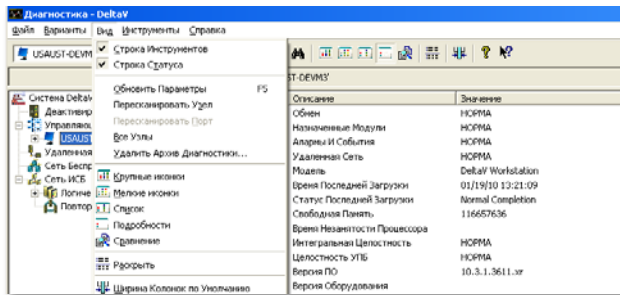


View historical trend and event information in Russian.

Product Description

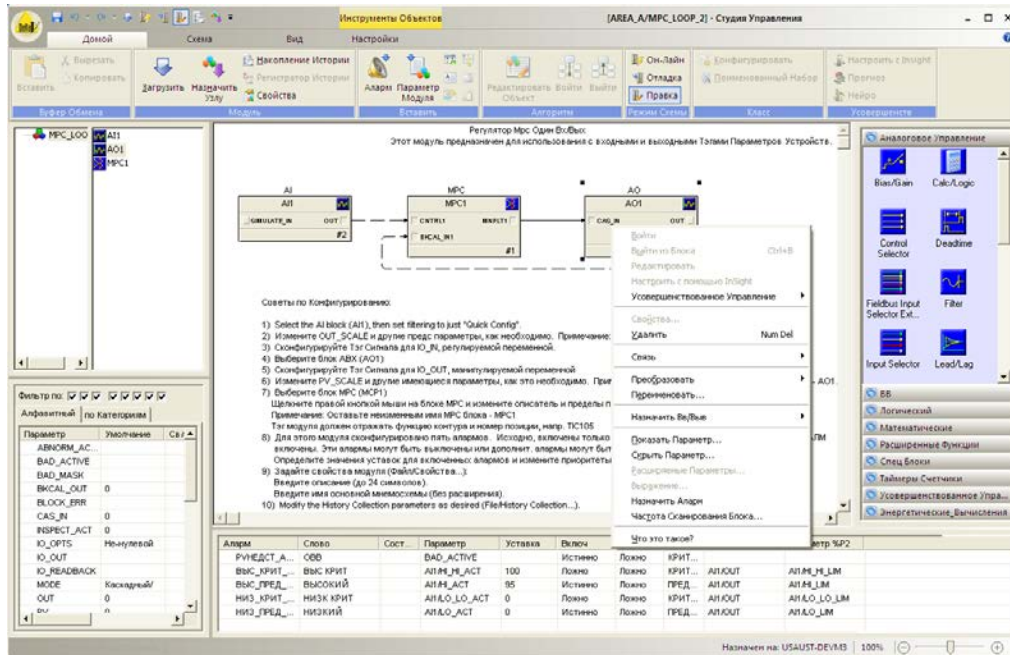
Localized User Applications

The following DeltaV applications are offered in Russian. Refer to the specific product data sheet for more information.



Diagnose your system in Russian.

- **AMS Device Manager**
Configure and diagnose your smart devices. Includes translated Audit Trail, Alert Monitor, and access to SNAP-ON applications.
- **Batch Basic, Advanced, and Professional Batch**
Easily configure and operate your batch processes.
- **Campaign Manager**
Create and edit batch campaigns.
- **Configuration Audit Trail**
Maintain full version control of your configuration.
- **Configuration Software Suite**
Configure your entire DeltaV system.
- **Control Studio Online**
View and debug control strategies on-line.
- **DeltaV Advanced Continuous Historian**
Based on embedded OSIsoft historian technology and available as an option on the Application Station. Scalable to 30,000 parameters with seamless connectivity to the site PI Server.
- **DeltaV Continuous Historian**
Store and retrieve process measurements efficiently. Historian administration localized.
- **DeltaV Event Chronicle**
Store and retrieve operator changes, alarms, and changes in device status.
- **DeltaV History View**
Provides the unique capability to integrate related batch, continuous and event data.
- **DeltaV InSight**
An advanced process monitoring system that instantly identifies under-performing loops and is used for fuzzy and PID auto-loop tuning.
- **DeltaV Neural**
Easy-to-use tools for developing and training the neural network model.
- **DeltaV Operate**
Includes high-resolution graphics, trends and alarms prioritized by user, standard operating desktop, and system-wide built-in security.
- **DeltaV Predict and Predict Pro**
Offers greater throughput to maintain plant operation at measurable operating constraints.
- **DeltaV Simulate**
PlantWeb development environment including simulation on a single PC.
- **DeltaV Zones**
Integrated operation and alarming for multiple DeltaV systems.
- **Diagnostics Explorer**
Provides system-wide (PAS and SIS), device-deep diagnostics.
- **MPC Operate**
View and modify on-line your model predictive control strategies.
- **Recipe Studio**
Create, modify, and troubleshoot recipes and construct batch control strategies quickly.



Easily configure and debug your control strategies in Russian.

DeltaV Hardware and Control Applications

The following works with DeltaV v12.3.1 Russian. DeltaV I/O products are not listed below because the hardware is not impacted by localization:

- **Advanced Unit Management Software**
Class-based Unit, Equipment, Control modules and Unit Phases.
- **Batch Executive**
Coordinates all activities during batch operation.
- **DeltaV Control Network Hardware**
A dedicated Ethernet network connecting DeltaV workstations and the controllers.
- **DeltaV Dual Monitor Workstation**
Two screens for monitoring your operations.
- **DeltaV Four Monitor Workstation**
Four screens for monitoring your operations.
- **DeltaV Fuzzy**
Run advanced fuzzy logic algorithms in your controller.
- **DeltaV MD and MD Plus Controllers**
Simplex and redundant controllers.
- **DeltaV Operator Keyboard**
Flexible, custom, dedicated operator touch screen keyboard for DeltaV workstations.
- **DeltaV Remote Access Service**
Service to locate Operator and Professional Stations on your plant LAN.
- **DeltaV Remote Client**
Remotely connect to your DeltaV system using thin-client technology.
- **DeltaV SIS Function Blocks**
Function blocks provide an easy configuration for SIS applications.
- **DeltaV SIS Logic Solver**
DeltaV logic solver provides SIS communications and control.
- **Monitor and Control Software**
Common monitoring and control functions.
- **Workstation Hardware**
DeltaV selection of workstations. Select the option for non-English languages (includes the Microsoft MUI Pack).

English DeltaV Applications

The following applications work with DeltaV v12.3.1 Russian. Any user interface component is in English, except as is listed above:

- **Backup and Recovery**
Acronis Backup and Recovery provides data protection and disaster recovery for DeltaV system.
- **Batch Analytics**
Batch Analytics provides online decision support for batch operations.
- **DeltaV OPC Event Server**
Transfer alarm and event information to and from the DeltaV system.
- **DeltaV OPC History Server**
Transfer history information to and from the DeltaV system.
- **DeltaV Executive portal**
Access DeltaV operator graphics from any computer with Internet Explorer.
- **DeltaV Excel Add-in**
Access real-time information from the DeltaV system into Excel.
- **DeltaV Virtual Studio**
Create and manage virtual DeltaV workstations.
- **History Analysis**
Provides Web-based viewing and analysis of DeltaV batch, continuous, alarm and event data.
- **OPC Mirror**
Transfers thousands of values back and forth between your DeltaV system and other OPC-compliant systems.
- **OPC Pager**
Keeps a 24-hour eye on your critical values and notifies you when they meet your alert criteria.
- **Recipe Exchange**
Open interface for the import/export of DeltaV recipes.
- **Syncade External Phase Server**
Coordinate multiple Syncade external phases on a unit.

Supported 3rd Party Applications

The following *work* with DeltaV v12.3.1 Russian. Any user interface component is in English.

- **INtools**
Import DeltaV configuration from INtools.
- **OSIsoft PI Enterprise Server**
The PI Enterprise Server is an enterprise-wide real-time information infrastructure that integrates production information with enterprise business systems.
- **Sytech XLReporter**
Easily create reports with real-time or historical data from the DeltaV.
- **Symantec Virus Scanner**
Easily create reports with real-time or historical data from the DeltaV.
- **VMware Workstation, Player and ESXi**
Import DeltaV configuration from INtools.

Unsupported DeltaV Applications

The following *do not work* with DeltaV v12.3.1 Russian.

- **DeltaV Analyze**
Web page view of alarms and events from the Event Chronicle or Plant Wide Event Historian.
- **DeltaV Connect**
DeltaV workstations connect to your Bailey, Honeywell or APACS systems.
- **DeltaV Operate for PROVOX**
PROVOX controllers and I/O in place and controlled by a DeltaV Operator Station.
- **DeltaV Operate for RS3**
RS3 controllers and I/O in place and controlled by a DeltaV Operator Station.
- **DeltaV Plantwide Event Historian**
Central storage and view of alarms and events from different systems.
- **DeltaV Web Server**
View your modified operator displays in web pages.
- **Excel Report Manager**
Report application by SyTech.
- **Fault Tolerant Server**
High availability workstations.
- **MiMiC**
Process simulation software package.
- **Multivariate Statistical Process Control (MSPC+)**
Multivariate statistical process control solution.
- **PlantWeb Messenger**
Exchange data between DeltaV system and business systems.
- **PROVOX Applications Server**
DeltaV integration (PAS) platform for PROVOX.
- **Recipe Manager XP for PROVOX**
Product for simplifying and managing batch recipes.

Prerequisites

For each DeltaV workstation and server model number, select the L10 suffix to receive the Microsoft MUI Pack for Russian.

Ordering Information

| Description | Model Number |
|---|------------------|
| Physical Media | |
| V12.3.1 DeltaV Software Media Pack, Russian <ul style="list-style-type: none"> DeltaV user, hardware and control applications in Russian. AMS Device Manager v12.0.1 in Russian (includes installation media). All other applications in English. | VE2301R1231L10 |
| DeltaV Virtual Studio¹ and DeltaV Virtualization Media² | |
| DeltaV Virtual Studio (DVS) – v12.3 Media, Russian <ul style="list-style-type: none"> v12.3 VM server templates (Russian) and DVS software (English) v12.3 VM Controller and Virtual CIOC templates (DVS and VMware) MS Windows Server 2008 R2 OS Embedded License (2) | VF1045R1231L10 |
| DeltaV Virtual Studio – VM Client Templates – v12.3 Media, Russian | VF1045R1231L10-T |

* Note 1 – DeltaV Virtual Studio is not translated to Russian, but works with DeltaV 12.3.1 Russian

* Note 2 – Virtual Studio Base License required. See DeltaV Virtual Studio Data Sheet for more information on Virtualization

General Language Ordering Options

| Options | Description |
|---------|---|
| R1231 | Order option for version 12.3.1 DeltaV software |
| L10 | Option for Russian Language |
| L39 | Option for English Language |

To locate a sales office near you, visit our website at:

www.EmersonProcess.com/DeltaV

Or call us at:

Asia Pacific: 65.6777.8211

Europe, Middle East: 41.41.768.6111

North America, Latin America: +1 800.833.8314 or
+1 512.832.3774

© Emerson Process Management 2014. All rights reserved.

The Emerson logo is a trademark and service mark of Emerson Electric Co. Brand name is a mark of one of the Emerson Process Management family of companies. All other marks are the property of their respective owners.

The contents of this publication are presented for information purposes only, and while effort has been made to ensure their accuracy, they are not to be construed as warranties or guarantees, express or implied, regarding the products or services described herein or their use or applicability.

All sales are governed by our terms and conditions, which are available on request. We reserve the right to modify or improve the designs or specifications of our products at any time without notice.

