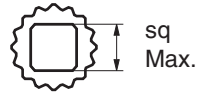
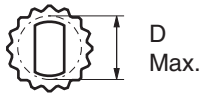


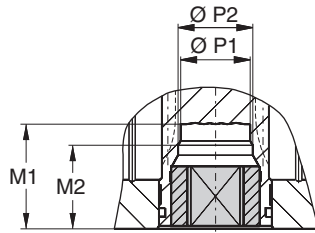
Standard available insert shapes



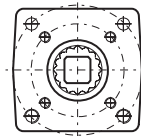
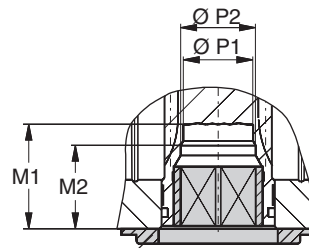
Optional available insert shapes



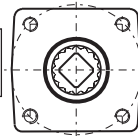
Insert mounting acc. ISO 5211



Insert mounting acc. DIN 3337



Centering plate



Description

Most of the El-O-Matic actuators are fitted with drive inserts. This enables actuators to be directly mounted onto suitable valves and eliminates the need for a bracket and coupling type mounting kit. The use of direct mounts significantly cuts the cost of the valve/actuator assembly.

Standard actuators are fitted with square drive inserts in accordance with ISO 5211 (or DIN 3337), but a wide variety of other inserts are also available. Special inserts may have oversize or undersize squares, double-D and shaft key way forms.

Drive inserts can be supplied on factory built actuators or as loose items and are easily replaceable at distributor or end user level.

Where direct mounts are not possible, for instance on valves with exposed grand packing, the use of inserts often simplifies the design of the mounting kit.

Material : Aluminum alloy
Finish : Anodized

The following actuator types do not have inserts.

- E12,
- P2500 and P4000
- 180° actuators.

These actuators have inner square directly in the bottom of the pinion. See the following data sheets for more information :

E12	ISO5211	1.103.102
	DIN 3337	1.103.103
P2500/P4000	DIN 3337	1.103.073
	ISO 5211	1.103.106
180°	DIN 3337	1.203.011
	ISO 5211	1.203.021

Dim. in mm	Inserts with inner-square-dimensions per actuator type						
	E40 / E65	E100	E200	E350	E600	E950	E1600
Standard inserts dimensions							
ISO5211	14	19	22	27	27	36	46
DIN3337	14	17	22	22	27	36	46
Optional insert dimensions							
	10	12	14	14	14	22	-
	12	14	16	16	16	-	-
	-	16	17	17	17	-	-
	-	-	19	19	19	-	-
	-	-	24	24	24	-	-
Maximum insert dimensions							
M1	34.5	34.5	50	50	52	64	82
M2	-	27	37	37	-	-	-
P1	18.1	23.1	32.1	32.1	36.5	48.5	60.5
P2	-	25.2	36.2	36.2	-	-	-
Sq max.							
	16	19	27	27	27	36	46
D max.							
	21	23.6	33.6	33.6	33.6	45	60