

DVC6200 or DVC2000 Digital Valve Controller on Old NAMUR Rotary Actuators

Mounting Instructions

D103459X012
November 2010

Use these instructions to mount a Fisher® FIELDVUE™ DVC6200 or DVC2000 digital valve controller on old NAMUR rotary actuators.



WARNING

Avoid personal injury or property damage from sudden release of process pressure or bursting of parts. Before performing any maintenance operations:

- **Always wear protective clothing and eyewear.**
- **Do not remove the actuator from the valve while the valve is still pressurized.**
- **Disconnect any operating lines providing air pressure, electric power, or a control signal to the actuator. Be sure the actuator cannot suddenly open or close the control valve.**
- **Use bypass valves or completely shut off the process to isolate the control valve from process pressure. Relieve process pressure from both sides of the control valve.**
- **Vent the pneumatic actuator loading pressure and relieve any actuator spring precompression.**
- **Use lock-out procedures to be sure that the above measures stay in effect while you work on the equipment.**
- **Check with your process or safety engineer for any additional measures that must be taken to protect against process media.**

Refer to figure 2 and the parts list for mounting parts identification. Refer to the DVC6200 or DVC2000 digital valve controller instruction manual for digital valve controller parts identification. Refer to the appropriate actuator instruction manual for actuator installation, operation, maintenance, and parts identification.

1. Isolate the control valve from the process line pressure, and release pressure from both sides of the valve body. Shut off all pressure lines to the actuator, releasing all pressure from the actuator. Use lock-out procedures to be sure that the above measures stay in effect while you work on the equipment.

2. Attach the coupler (key 3) to the actuator shaft using the hex socket cap screw (key 4) and tighten.

3. Place the pointer (key 8) before attaching the magnet assembly (key 6) to the coupler using the pan head screws (key 7) and tighten. The magnet assembly must be oriented per figure 1, so that the flats are approximately as shown relative to the channel in the instrument housing at the actuator mid-travel position.

4. Attach the digital valve controller to the mounting bracket (key 2) using the hex head cap screws (key 5). Allow for minor adjustments if needed.

5. Attach the mounting bracket (key 2) loosely to the actuator using only two of the hex head cap screws (key 1, select metric or inch fasteners, as appropriate for actuator) on the same side of the bracket. Slide the mounting plate (key 9) under the two hex head cap screws and insert two remaining hex head cap screws. Visually center the magnet assembly and digital valve controller and tighten all fasteners.

6. Attach the travel indicator scale (key 10) to the mounting plate (key 9) using plain washer (key 11) and cap screws (key 12). Refer to figure 2.

7. Connect and calibrate the instrument as described in the appropriate instruction manual.

For additional information concerning the mounting, setup, calibration, and maintenance of the DVC6200 or the DVC6000 digital valve controller refer to the appropriate instruction manual.

Note

Neither Emerson, Emerson Process Management, nor any of their affiliated entities assumes responsibility for the selection, use, or maintenance of any product. Responsibility for the selection, use, and maintenance of any product remains with the purchaser and end user.



DVC6200 or DVC2000 Digital Valve Controller on Old NAMUR Rotary Actuators

Mounting Instructions
D103459X012
November 2010

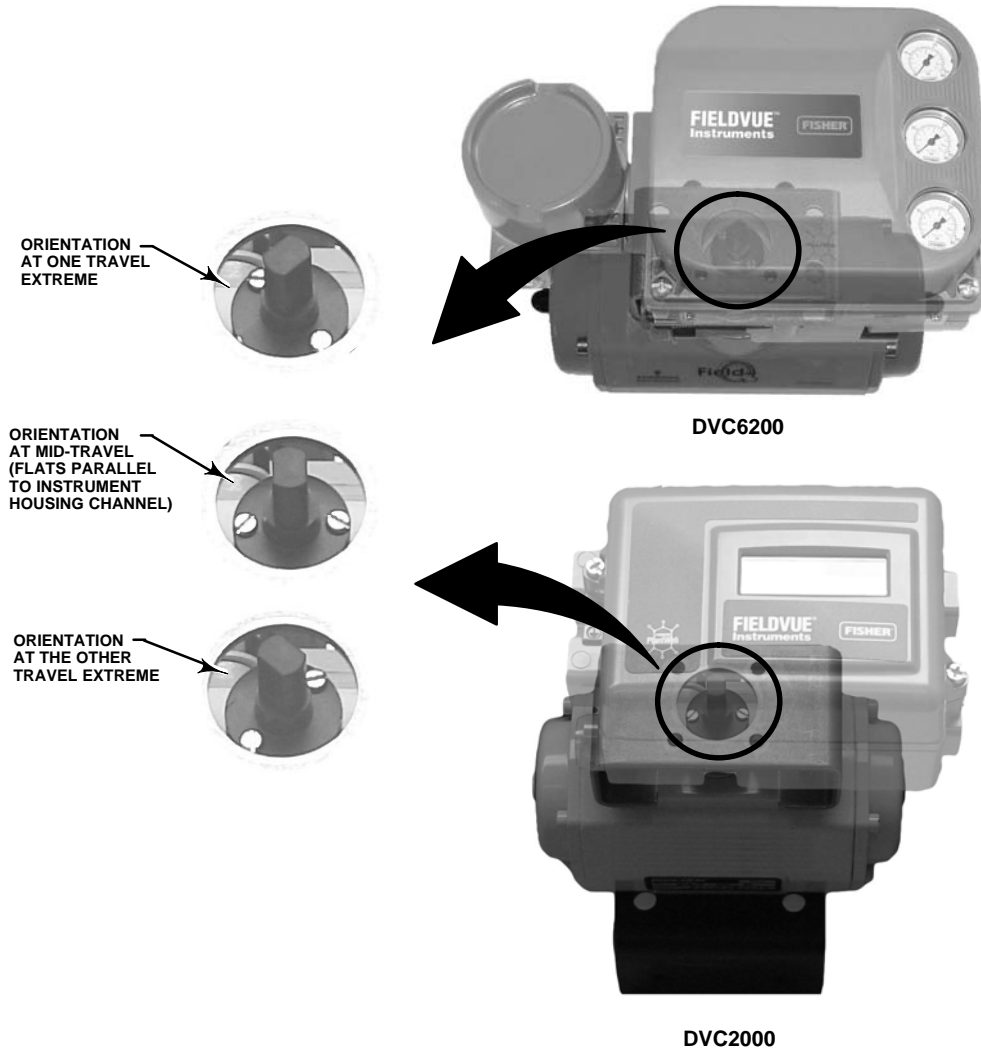
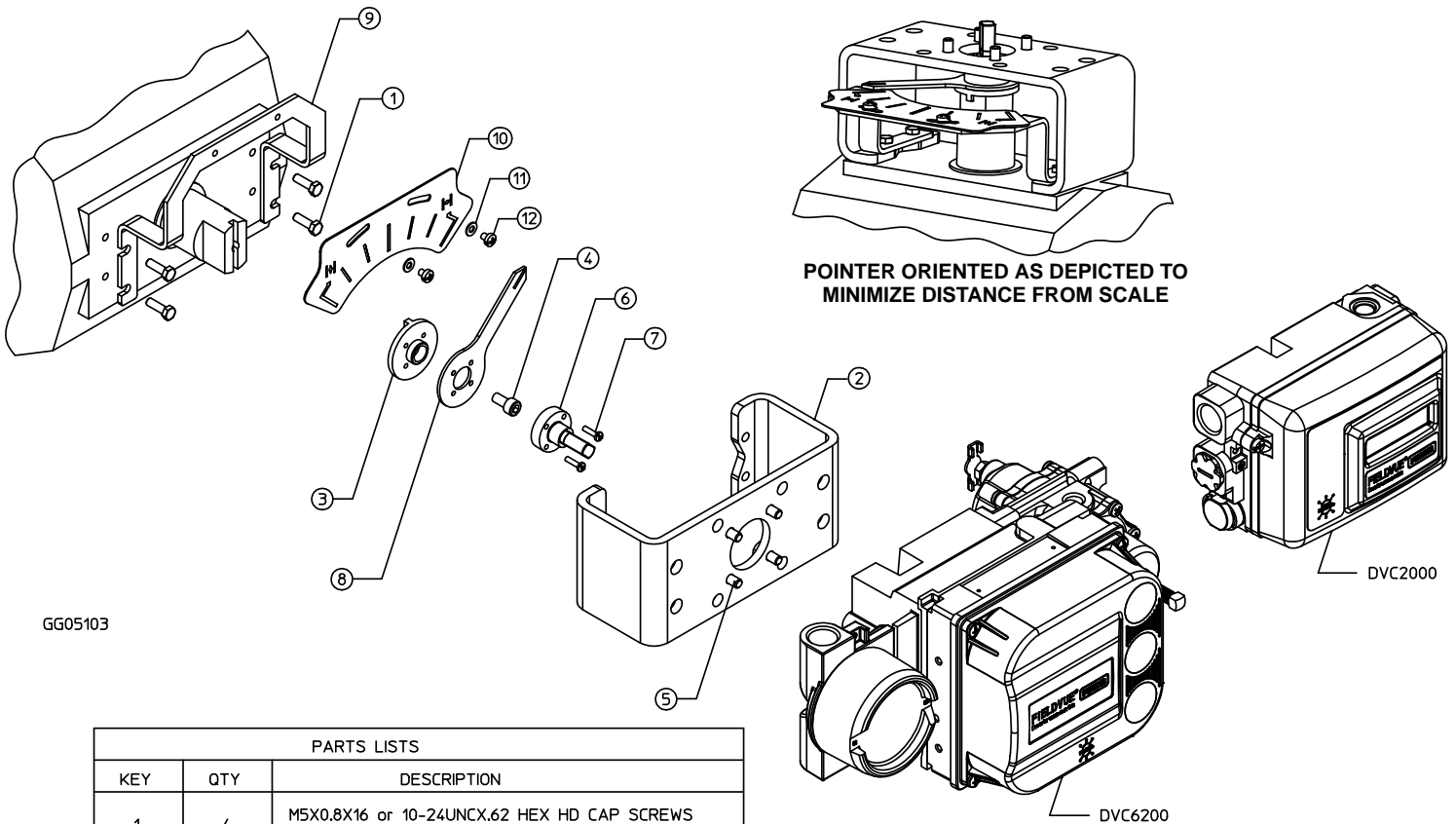


Figure 1. Magnet Assembly Orientation

Mounting Instructions

D103459X012
November 2010

DVC6200 or DVC2000 Digital Valve Controller on Old NAMUR Rotary Actuators



GG05103

PARTS LISTS		
KEY	QTY	DESCRIPTION
1	4	M5X0.8X16 or 10-24UNCX.62 HEX HD CAP SCREWS (CHOOSE CORRECT THREAD SIZE)
2	1	MOUNTING BRACKET
3	1	COUPLER
4	1	M6X1X12 HEX SOCKET CAP SCREW
5	4	M6X1X14 HEX HEAD CAP SCREW
6	1	FEEDBACK ASSEMBLY
7	2	M3X0.5X12 PAN HD MACH SCREW
8	1	POINTER
9	1	MOUNTING PLATE
10	1	TRAVEL INDICATOR SCALE
11	2	PLAIN WASHER
12	2	M4X0.7X5 PAN HD MACH SCREW

Figure 2. Mounting Parts Identification

Fisher and FIELDVUE are marks owned by one of the companies in the Emerson Process Management business division of Emerson Electric Co. Emerson Process Management, Emerson, and the Emerson logo are trademarks and service marks of Emerson Electric Co. All other marks are the property of their respective owners.

The contents of this publication are presented for informational purposes only, and while every effort has been made to ensure their accuracy, they are not to be construed as warranties or guarantees, express or implied, regarding the products or services described herein or their use or applicability. All sales are governed by our terms and conditions, which are available upon request. We reserve the right to modify or improve the designs or specifications of such products at any time without notice. Neither Emerson, Emerson Process Management, nor any of their affiliated entities assumes responsibility for the selection, use or maintenance of any product. Responsibility for proper selection, use, and maintenance of any product remains solely with the purchaser and end-user.

Emerson Process Management

Marshalltown, Iowa 50158 USA
Sorocaba, 18087 Brazil
Chatham, Kent ME4 4QZ UK
Dubai, United Arab Emirates
Singapore 128461 Singapore

www.Fisher.com



EMERSON
Process Management