

Remote MVS Interface for FloBoss™ 503 Flow Managers

The Remote MVS Interface is a communication package that allows a FloBoss 503 Flow Manager to be connected remotely to a Multi-Variable Sensor (MVS).

The components of the Remote MVS Interface are:

- A CR1 Card that installs on a bracket inside the FloBoss 503 enclosure.
- A ribbon cable for connecting the MVS Interface to the FloBoss unit.
- A bracket that holds the Remote MVS Interface card and that seals the integral sensor opening.

A ribbon cable connects the MVS Interface Card to the P/DP terminal block on the processor board of the FloBoss unit. Each MVS Interface Card is shipped with a terminal block for wiring RS-485 serial communications and power connection to the MVS sensor. The FloBoss 503 unit provides power to the MVS Interface Card.

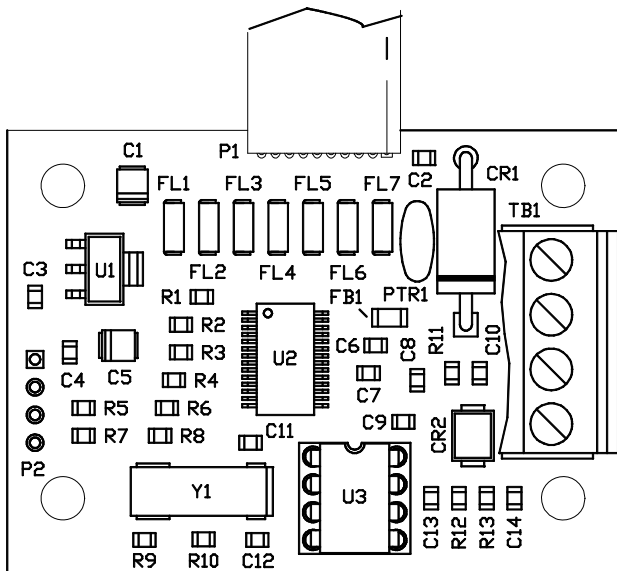
The socketed RS-485 transceiver chip is field-replaceable to minimize down-time in the event of a loss of MVS communication (for example, after a lightning strike).

The bracket assembly seals closed the integral sensor opening at the base of the FloBoss enclosure with a gasket, plate and screw. This maintains the FloBoss enclosure's NEMA 4, Class I Div. 2 rating. The bracket extends out to the front of the enclosure where the Remote MVS Interface card is attached on four compression stand-offs.

The firmware in the FloBoss 503 must be version 2.30 or greater. The firmware allows the RTD input signal to come from a RTD sensor wired directly to the FloBoss 503 MCU (RTD input) or to the MVS sensor (when on-board RTD is not connected).

ROCLINK 800 Configuration Software (version 1.80 or greater) is required for configuration of the MVS points.

For more information on the MVS205 sensor, please refer to *Specification Sheet 2.5:MVS205*.



D00C0416A

MVS Interface Card (CR1)

D301165X012

Specifications

MVS INTERFACE

High-speed serial interface (optically isolated) with power.

DIMENSIONS

41 mm H by 56 mm W (1.6 in H by 2.2 in W).

WEIGHT

15 g (0.48 oz).

ENVIRONMENTAL

Same as the FloBoss unit in which the MVS Interface Card is installed. Refer to *Specification Sheet 3:FB503*.

APPROVALS

Approved by CSA for hazardous locations Class I, Division 2, Groups A, B, C, and D.

Bristol, Inc., Bristol Canada, BBI SA de CV and Emerson Process Management Ltd, Remote Automation Solutions division (UK), are wholly owned subsidiaries of Emerson Electric Co. doing business as Remote Automation Solutions ("RAS"), a division of Emerson Process Management. FloBoss, ROCLINK, Bristol, Bristol Babcock, ControlWave, TeleFlow and Helicoid are trademarks of RAS. AMS, PlantWeb and the PlantWeb logo are marks of Emerson Electric Co. The Emerson logo is a trademark and service mark of the Emerson Electric Co. All other marks are property of their respective owners.

The contents of this publication are presented for informational purposes only. While every effort has been made to ensure informational accuracy, they are not to be construed as warranties or guarantees, express or implied, regarding the products or services described herein or their use or applicability. RAS reserves the right to modify or improve the designs or specifications of such products at any time without notice. All sales are governed by RAS' terms and conditions which are available upon request. RAS does not assume responsibility for the selection, use or maintenance of any product. Responsibility for proper selection, use and maintenance of any RAS product remains solely with the purchaser and end-user.

Emerson Process Management
Remote Automation Solutions
 Marshalltown, IA 50158 U.S.A.
 Houston, TX 77041 U.S.A
 Pickering, North Yorkshire UK Y018 7JA

