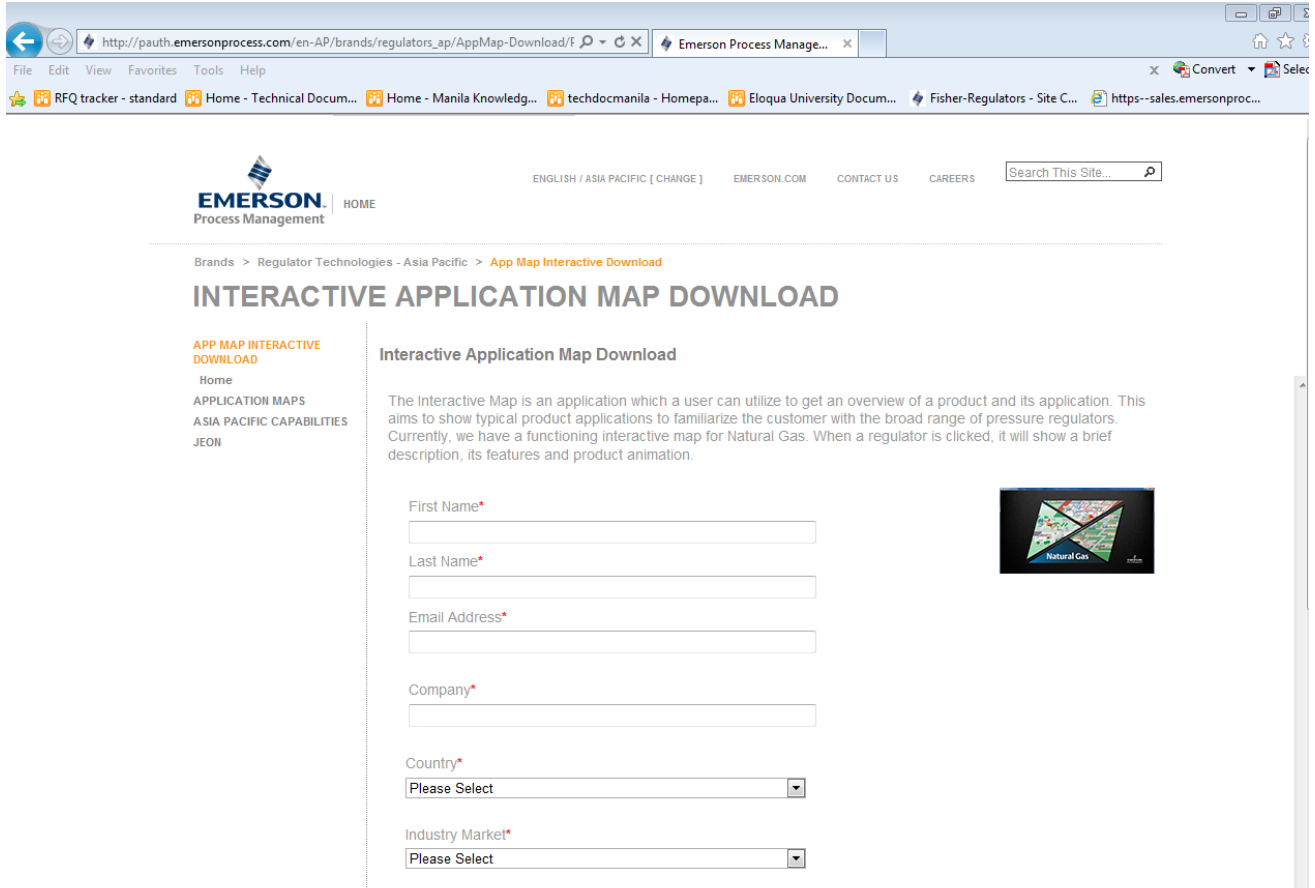


How to Download Interactive Application Map

1. Go to download page http://www2.emersonprocess.com/en-AP/brands/regulators_ap/AppMap-Download/Pages/AppMapInteractive-Download.aspx



The screenshot shows a web browser window displaying the Emerson Process Management website. The address bar shows the URL: http://pauth.emersonprocess.com/en-AP/brands/regulators_ap/AppMap-Download/f. The page header includes the Emerson logo and navigation links for ENGLISH / ASIA PACIFIC [CHANGE], EMERSON.COM, CONTACT US, and CAREERS. A search bar is located in the top right corner.

The main content area features a breadcrumb trail: Brands > Regulator Technologies - Asia Pacific > App Map Interactive Download. Below this is the section title "INTERACTIVE APPLICATION MAP DOWNLOAD".

On the left side, there is a sidebar menu with the following items: APP MAP INTERACTIVE DOWNLOAD, Home, APPLICATION MAPS, ASIA PACIFIC CAPABILITIES, and JEON.

The main content area contains the following text:

Interactive Application Map Download

The Interactive Map is an application which a user can utilize to get an overview of a product and its application. This aims to show typical product applications to familiarize the customer with the broad range of pressure regulators. Currently, we have a functioning interactive map for Natural Gas. When a regulator is clicked, it will show a brief description, its features and product animation.

To the right of the text is a small image of a map labeled "Natural Gas".

Below the text is a form for downloading the interactive application map. The form fields are:

- First Name*
- Last Name*
- Email Address*
- Company*
- Country* (Please Select)
- Industry Market* (Please Select)

2. Fill up the form.

Brands > Regulator Technologies - Asia Pacific > [App Map Interactive Download](#)

INTERACTIVE APPLICATION MAP DOWNLOAD

APP MAP INTERACTIVE DOWNLOAD

Home

APPLICATION MAPS

ASIA PACIFIC CAPABILITIES

JEON

Interactive Application Map Download

The Interactive Map is an application which a user can utilize to get an overview of a product and its application. This aims to show typical product applications to familiarize the customer with the broad range of pressure regulators. Currently, we have a functioning interactive map for Natural Gas. When a regulator is clicked, it will show a brief description, its features and product animation.



First Name*

Paulo

Last Name*

Riparip

Email Address*

JohnPaulo.Riparip@emerson.com

Company*

Emerson Electric Asia

Country*

Philippines

Industry Market*

Other

Job Title*

Technician/Analyst/Specialist

Job Responsibility*

IT/MIS

Download Software

3. Click 'Download Software' button.

Interactive Application Map Download

The Interactive Map is an application which a user can utilize to get an overview of a product and its application. This aims to show typical product applications to familiarize the customer with the broad range of pressure regulators. Currently, we have a functioning interactive map for Natural Gas. When a regulator is clicked, it will show a brief description, its features and product animation.

First Name*

Last Name*

Email Address*

Company*

Country*

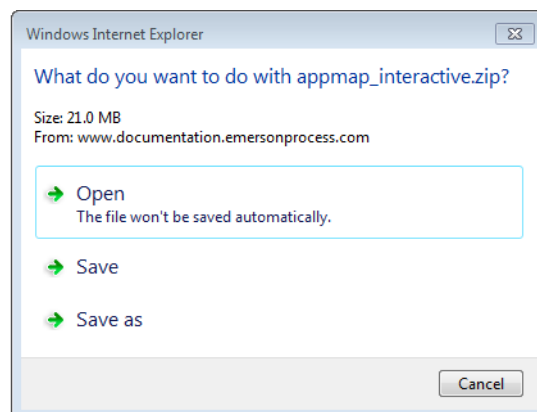
Industry Market*

Job Title*

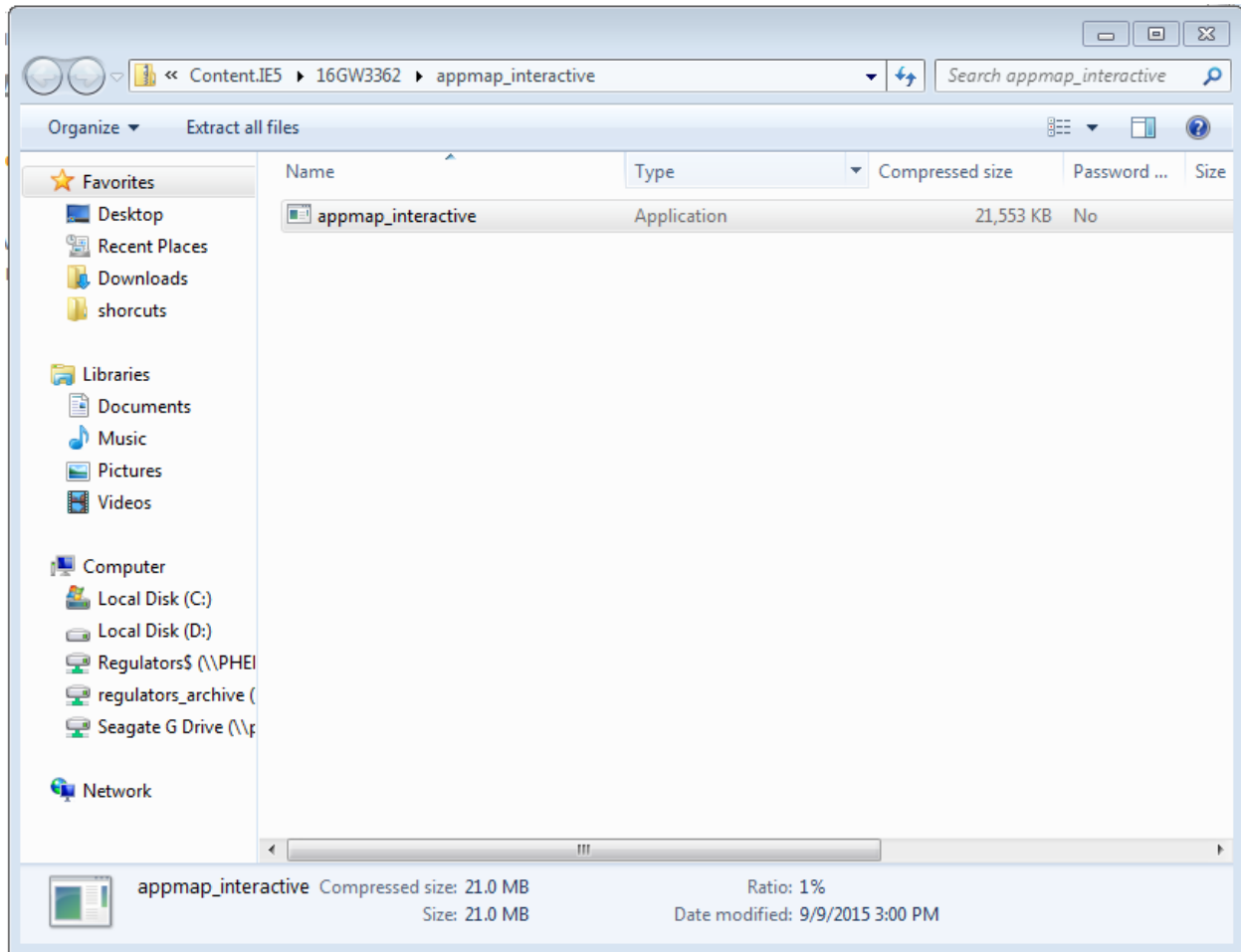
Job Responsibility*



4. Click open to run the file.



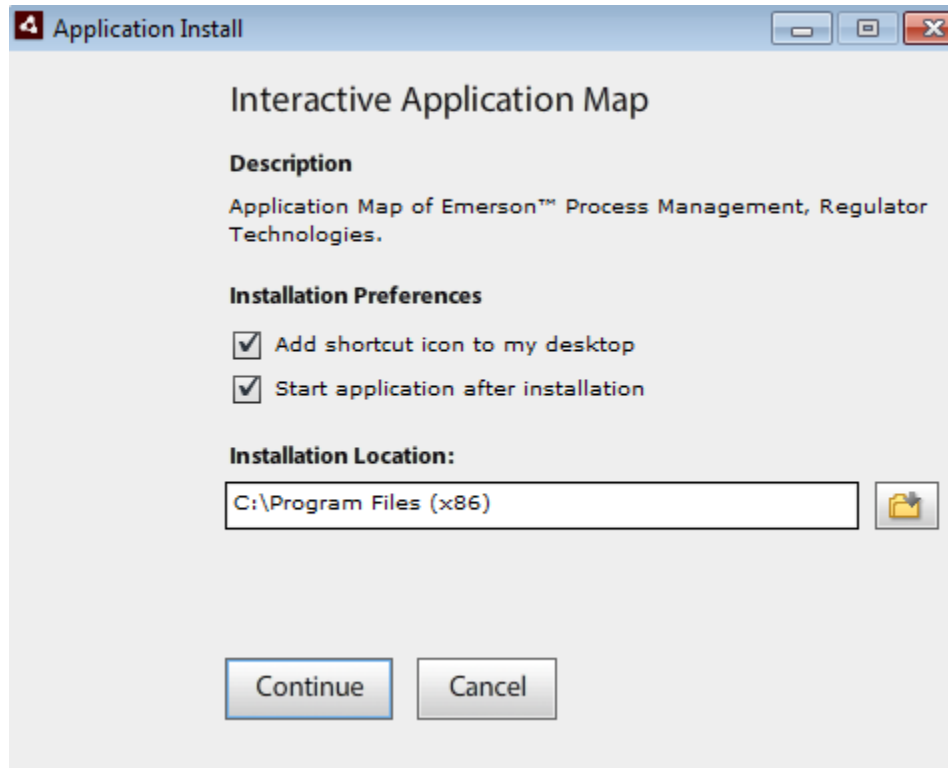
5. The folder will open with the installer application. Open the file to run.



6. Window will prompt to your screen. Click Run to install the Application Map.



7. The Installer will run. Click continue to install the application.



8. The Application Map is already downloaded to your PC. You may now view the Interactive Application Map.

