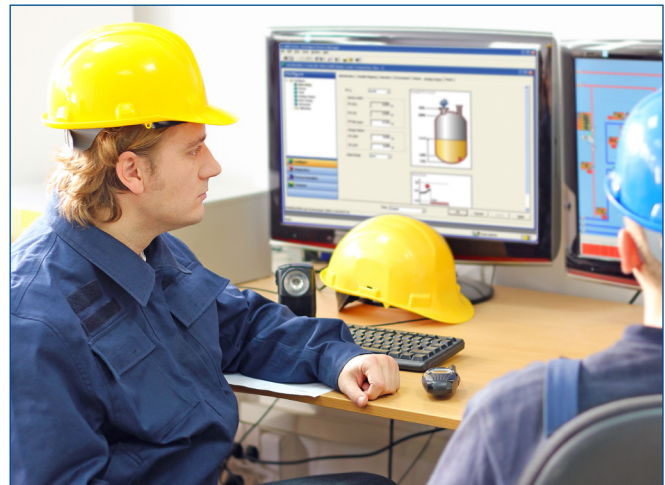


Install Services for AMS Device Manager

- Ensure your AMS Device Manager system is properly configured to maximize received benefits
- Increase effectiveness of your maintenance and operations personnel
- Integrate AMS Device Manager into daily work



AMS Device Manager delivers insight into the health of your instruments and valves.

Introduction

When instrument and valve issues impact plant availability, you need predictive diagnostics to make fast, accurate decisions. AMS Device Manager allows you to focus your limited resources on the right assets. With installation and configuration services, you can quickly make use of technology that easily provides the information you need on a daily.

When you partner with Emerson, you can get the most from your technology investment, smart field devices, and increase productivity through technology integration. Emerson experts can help you get started quickly, ensure the asset management system is set up effectively to achieve your goals, customize the installation to your unique connectivity needs, and optimize alerts.

Benefits

Ensure your AMS Device Manager system is correctly installed and ready for use: Install Services for AMS Device Manager enable and ensure value from your predictive technology investment. Install Services ensure a solid setup of AMS Device Manager system and deliver basic training for the needed personnel to maximize the benefits of the AMS Device Manager System.

Increase effectiveness of your maintenance and operations personnel: Installed services for AMS Device Manager can bring savings to even the most basic activities, such as the time technicians spend walking, locating, and returning items. Some of these activities may be eliminated with streamlined work processes. Install Services ensure your maintenance work processes are designed to improve manpower efficiency and help you become a best cost producer. In addition, taking full advantage of AMS Device Manager delivers savings to configuration, calibration, and documentation tasks.

Integrate AMS Device Manager into daily work practices to drive productivity improvements: Install Services for AMS Device Manager will help your facility drive improved decision-making, streamline daily maintenance, use predictive diagnostics to improve performance, and maximize your maintenance resources.

Service Description

Whether you're installing a new system or upgrading an existing system, Install Services are designed to provide an interactive introduction to AMS Device Manager capabilities. An Emerson certified specialist will configure AMS Device Manager by executing the following tasks:

- Review system architecture
- Install and license software
- Configure networks and establish device communication
- Create initial database structure
- Complete initial set up of Alert Monitor (if applicable)
- Install SNAP-ON™ applications (if applicable)
- Review basic software functions and navigation with key users
- Provide formal training and mentoring needs

Our experience has proven that in an AMS Device Manager system of more than 25 online tags, customers experience faster start-up time and improved maintenance with Install Services.

Existing AMS Device Manager users can also benefit from the Install Services offering. With an existing system, Emerson certified experts will:

- Inspect the system architecture for changes/additions
- "Tune up" the database and Alert Monitor
- Review system functionality with client personnel, particularly new hires and retrain as necessary

Ordering Information

Please contact your local Emerson sales office or representative organization for quotation.

Part Number	Description
PW-INST-DMXXXXX	XXXXX= number of tags (online) 25-300 (increments of 25), 300-500 (increments of 50), 500-2,000 (increments of 100), 2,000-5,000 (increments of 500), 5,000-30,000 (increments of 2,500)
PW-INST-DM	for all off-line tags

Emerson
Reliability Solutions
 1100 W. Louis Henna Blvd.
 Round Rock, TX 78681-7430 USA
 ☎ +1 512 835 3111

🌐 www.emerson.com/ams

©2017, Emerson. All rights reserved.

The Emerson logo is a trademark and service mark of Emerson Electric Co. All other marks are the property of their respective owners.

The contents of this publication are presented for informational purposes only, and while every effort has been made to ensure their accuracy, they are not to be construed as warranties or guarantees, express or implied, regarding the products or services described herein or their use or applicability. All sales are governed by our terms and conditions, which are available on request. We reserve the right to modify or improve the designs or specifications of our products at any time without notice.