

Installing ValveLink™ DTM Software (Obsolete Document)

This document is OBSOLETE, as the information included within is now available in the ValveLink Software Installation Guide, [D102800X012](#). Refer to the installation guide for the latest ValveLink DTM installation procedure.

Neither Emerson, Emerson Automation Solutions, nor any of their affiliated entities assumes responsibility for the selection, use or maintenance of any product. Responsibility for proper selection, use, and maintenance of any product remains solely with the purchaser and end user.

Fisher and ValveLink are marks owned by one of the companies in the Emerson Automation Solutions business unit of Emerson Electric Co. Emerson Automation Solutions, Emerson, and the Emerson logo are trademarks and service marks of Emerson Electric Co. All other marks are the property of their respective owners.

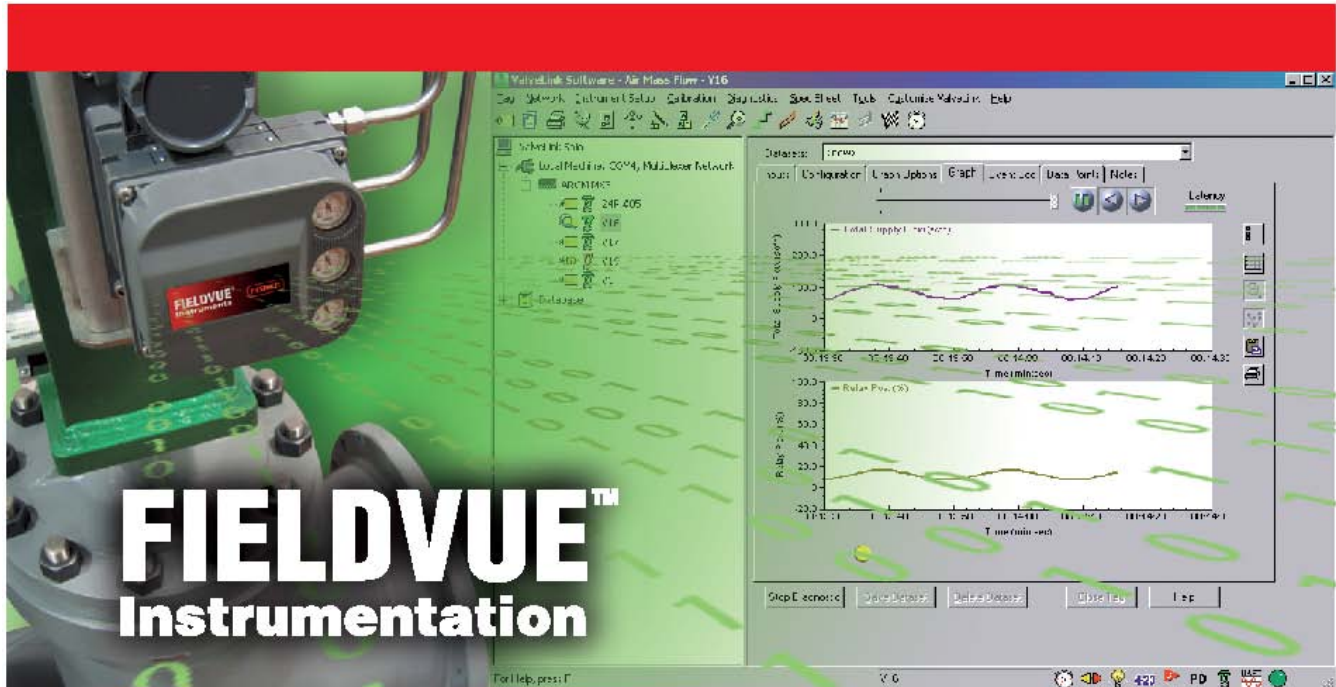
The contents of this publication are presented for informational purposes only, and while every effort has been made to ensure their accuracy, they are not to be construed as warranties or guarantees, express or implied, regarding the products or services described herein or their use or applicability. All sales are governed by our terms and conditions, which are available upon request. We reserve the right to modify or improve the designs or specifications of such products at any time without notice.

Emerson Automation Solutions
Marshalltown, Iowa 50158 USA
Sorocaba, 18087 Brazil
Cernay, 68700 France
Dubai, United Arab Emirates
Singapore 128461 Singapore

www.Fisher.com



Installing ValveLink™ DTM Software



ValveLink DTM Software Installation Guide

This installation guide is intended to provide the basic information you need to install ValveLink DTM (Device Type Manager) software.

The ValveLink DTM is part of an open solution for Field Device Management (FDT) that enables configuration, monitoring, calibration, diagnostics and testing of FIELDVUE™ digital valve controllers.

To successfully install and use ValveLink DTM software, you should have experience using an FDT frame application.

For more information about ValveLink DTM software installation, contact your Emerson Process Management Local Business Partner.

Device Types supported

Hart Devices

FIELDVUE DVC6200

FIELDVUE DVC6000

FIELDVUE DVC2000

FIELDVUE DVC5000

FOUNDATION™ fieldbus Devices

FIELDVUE DVC6200f

FIELDVUE DVC6000f

FIELDVUE DVC5000f

Requirements

Prior to beginning installation verify that your personal computer system meets the hardware and software requirements specified in this section.

Hardware Requirements

Computer and Processor

800 megahertz (MHz) processor (Windows® XP/Windows Server® 2003)

1 gigahertz (GHz) processor (Windows Vista® operating system/Windows Server 2008/Windows 7)

Memory

256 megabytes (MB) RAM (Windows XP/Windows Server 2003)

1 gigabyte (GB) RAM (Windows Vista/Windows Server 2008/Windows 7)

Drive

CD-ROM Drive

Display

1024 X 768 resolution,
256 color

I/O

Product licensing and device step-ups require a USB Port

Software Requirement

Operating systems

Windows XP, Windows Vista, Windows Server 2003,
Windows Server 2008, and Windows 7 (32 bit and 64 bit))

Frame application (FDT)

Frame application supporting FDT 1.2 and addendum

To install ValveLink DTM software:

A USB hardware key or a software license key is required for the installation of ValveLink DTM software. If available, locate the hardware key to use while running the ValveLink License Wizard. If a USB hardware key is not available, see the next section for instructions for obtaining a software license key.

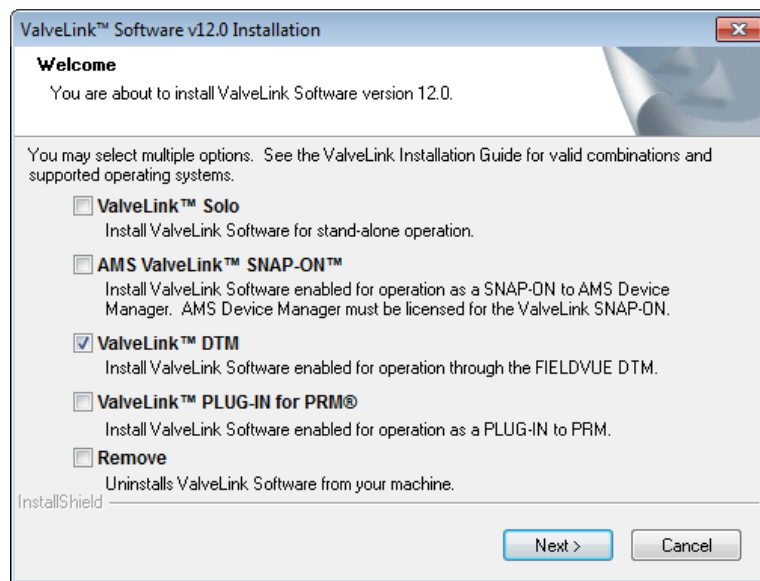
Step 1. Close all open applications on your desktop.

Step 2. Insert the CD containing the ValveLink software installation files in the CD drive of your computer. If the drive's auto run is enabled, the install wizard will start automatically. Follow the prompts on the screen to start the installation process.

If auto run is disabled, start the install from the run window; Select Start > Run from the taskbar. In the text box, type D:SETUP.EXE (where D is the CD-ROM drive letter). Click OK and follow the prompts.

Step 3. Click Next to begin the installation process. The ValveLink software installation Welcome window displays as shown in figure 1. Select ValveLink DTM.

Figure 1. ValveLink Software Welcome Window



Step 4. After making your selection, click Next to continue. In the next window, choose the location of the folder that will receive the ValveLink DTM for installation. Click Next to continue.

Step 5. If you are installing ValveLink DTM software for the first time, you will be prompted to run the License Wizard at the end of the installation process. Select OK and follow the prompts on the screen, or select Cancel to run the License Wizard later. Refer to the following section for details on running the License Wizard.

Step 6. Update the DTM catalog in the frame application after installation.

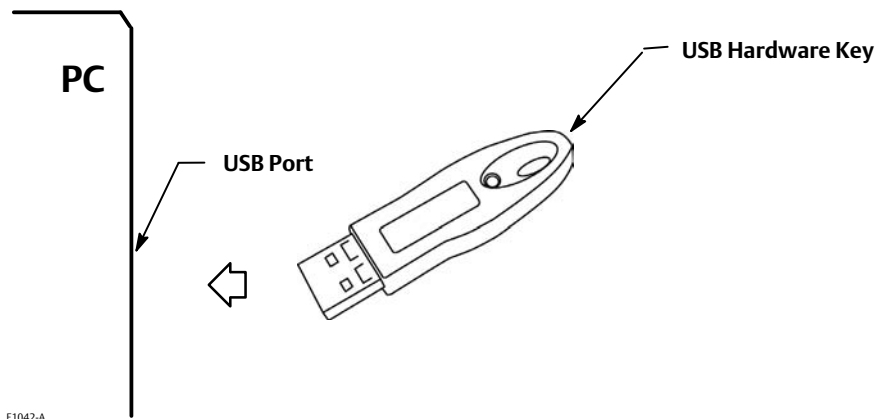
To license ValveLink DTM software:

The License Wizard is a utility that allows you to enable and administer the license of your ValveLink DTM software.

To enable the license using an installation USB hardware key:

Step 1. Attach your installation USB hardware key to the computer, as shown in figure 2.

Figure 2. Attaching the USB Hardware Key



Step 2. Run the License Wizard and click on the New License button.

Step 3. Select the Generate license using installation hardware key option button, and click Next. Follow the License Wizard steps as directed

To generate a registration form (figure 3) to obtain a software license key for a new license:

Step 1. Unplug any USB hardware keys attached to computer.

Step 2. Run License Wizard and click on the New License button.

Step 3. Select the Generate License using the Software Licensing option button. Follow the License Wizard steps as directed.

Figure 3. ValveLink License Wizard Registration



Step 4. Attach the .txt file containing the registration form generated by the License Wizard to an e-mail and send to registration@valvelink.com. If e-mail is not available, fax the form to the number shown on the registration form.

Step 5. After receiving the license keys, re-run the License Wizard, and continue on with Step 6.

Step 6. Click on the Enter License Key button and either import or manually enter the license key received from the ValveLink Registration Center. Follow the License Wizard steps as directed.

After running the License Wizard, the next screen lists the available software features. After confirming that the appropriate features are enabled in your software, select “Yes. I would like to proceed with the above features.”, then click Next.

To enable a temporary license:

Step 1. Run the License Wizard and click on the Temporary License button.

Step 2. Follow the License Wizard steps as directed.

After receiving the license key from the ValveLink Registration Center, you must run the License Wizard and enable or StepUp the license of the installed ValveLink DTM software.

Note

Store the license key file in a safe place after enabling the license in case you ever need to reinstall ValveLink software on your PC. Note that the license key can only be used on the computer for it was originally licensed.

Neither Emerson, Emerson Process Management, nor any of their affiliated entities assumes responsibility for the selection, use or maintenance of any product. Responsibility for proper selection, use, and maintenance of any product remains solely with the purchaser and end user.

Fisher, ValveLink and FIELDVUE are marks owned by one of the companies in the Emerson Process Management business unit of Emerson Electric Co. Emerson Process Management, Emerson, and the Emerson logo are trademarks and service marks of Emerson Electric Co. Windows, Windows Server, and Windows Vista are either registered trademarks or trademarks of Microsoft Corporation in the United States and/or other countries. All other marks are the property of their respective owners.

The contents of this publication are presented for informational purposes only, and while every effort has been made to ensure their accuracy, they are not to be construed as warranties or guarantees, express or implied, regarding the products or services described herein or their use or applicability. All sales are governed by our terms and conditions, which are available upon request. We reserve the right to modify or improve the designs or specifications of such products at any time without notice.

Emerson Process Management
Marshalltown, Iowa 50158 USA
Sorocaba, 18087 Brazil
Chatham, Kent ME4 4QZ UK
Dubai, United Arab Emirates
Singapore 128461 Singapore

www.Fisher.com