

Rosemount 3493 LOGView

Software Version 1.21



1. INTRODUCTION

Rosemount 3493 LOGView is a software package that works with the Rosemount 3493 Data Logging System.

LOGView allows the user to **download** the **stored data** from the Rosemount 3493 to the user's computer. The data available includes up to 7000 sample values, 60 daily totals, and 60 maximum daily flow rates.

Within the LOGView software, the downloaded data can be used to produce reports, summaries, and charts, each tailored to the user's requirements.

Many of the functions available in LOGView can be selected in more than one way: by cursor, menu, function key, or dedicated button. At the top of each section of this manual there are details of the dedicated buttons and menu, the text in brackets being the top level menu.

2. SOFTWARE INSTALLATION

LOGView is installed using a Windows installation program called Setup. This program creates any directories that may be needed, and copies the program and other files required to run LOGView into these directories.

LOGView is installed into a program directory, by default 'C:\ LOGVIEW'.

Finally, Setup creates a new item under the Program Manager (Program Start Menu) so that Mobrey LOGView can be run by clicking on an icon representing LOGView. There is also an identical icon created on the Windows desktop.

Requirements to run LOGView

LOGView is a Windows application program distributed on one CD-ROM. To install LOGView, the following is required:

- An IBM-compatible PC with Microsoft® Windows® software (3.1, 95, or later version) installed.
- A CD-ROM (or DVD-ROM drive capable of reading a CD-ROM).
- Approximately 1MB of hard disk available.
- 1MB RAM.

Installation

Start the PC and wait until the Windows Desktop is visible.

Then insert the LOG-VIEW CD-ROM into the CD-ROM drive.

Run the Setup program, which is accessed by double-clicking on the Setup application file on the CD-ROM as seen using Windows Explorer.

Figure 1.




If is chosen (Figure 1), the screen will then ask where the program is to be installed. The default location of "C:\ LOGVIEW" will be displayed. If a different path is required, edit the "Install To:" text box (Figure 2).

Rosemount 3493 LOGView

Figure 2.



Once either the default path or the custom path is chosen, press . The files are then automatically installed on the PC. A LOGView icon will appear in the Start menu.


The LOGView software package is now ready for use.

3. THE STEPS TO COLLECT DATA

Connect the PC to the Rosemount 3493 Data Logging System by using the communications lead provided. If a different connection lead is required, see Appendix A.

Start LOGView from the Windows menu. A screen will appear with a row of selection buttons across the top (Figure 3).

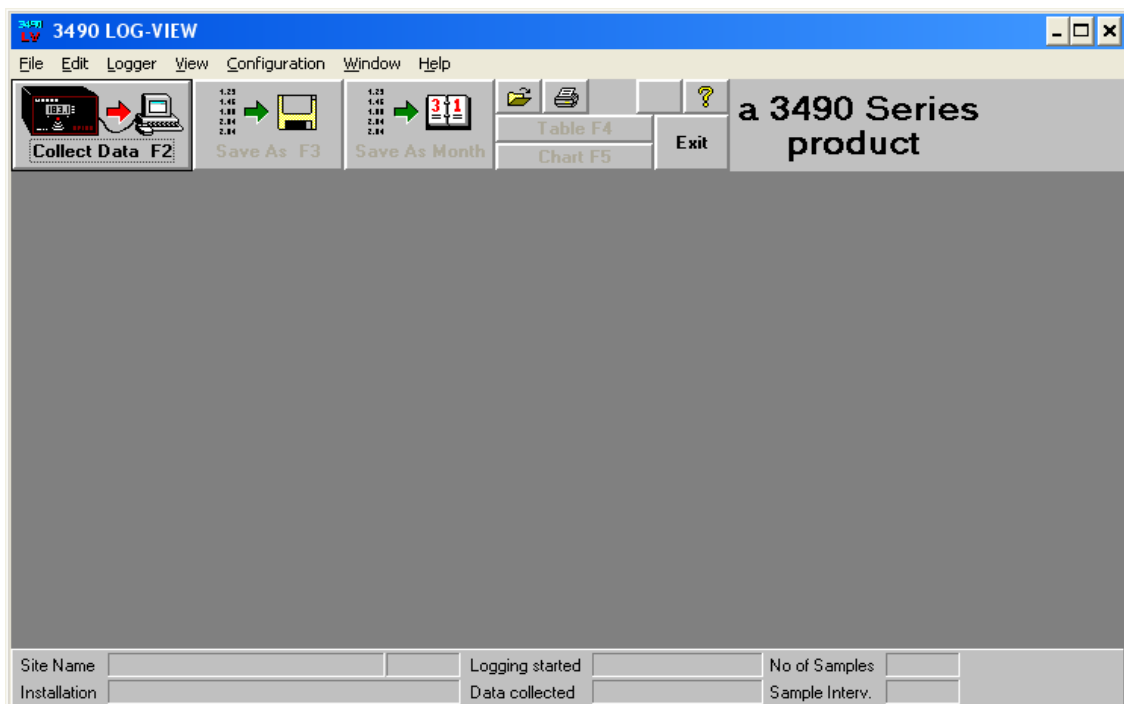
Important: Ensure that the correct communications port is selected. There is a default setting that can easily be changed in the Serial Port command from the Configuration menu.

Click on the  button or press F2 to collect all of the data from the Rosemount 3493.

After collecting the data, it may be saved in a 'CSV file'. Click on the "Save Data" button or press F3. See "Saving Data" on page 5.

Now you can exit LOGView.

Figure 3.

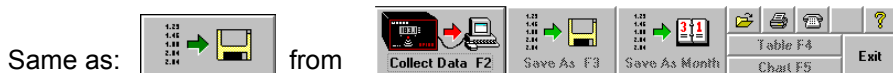


4. SAVING DATA

There are two formats for saving data. The first option is as the standard CSV format, in which case all the data collected is saved as one file. The second format saves the data in a monthly CSV format, and automatically joins together all the data from one month in one file.

All of the LOGView data is in Comma Separated Values (CSV) format.

Save Data As CSV File Format (File Menu)



After you have collected Data from the logger you should save it in a CSV File. The "Save Data As CSV File" button displays a file dialogue box for you.

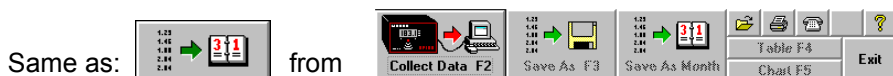
LOGView automatically offers you a filename that consists of the unique ID and a three digit number. That number is the next after the highest number found in the CSV sub-directory.

NOTE:

Data is saved with the current international settings of your PC.

Write/Add To Monthly CSV File (File menu)

Alternatively the data can be saved in a monthly file.



A monthly file can be automatically built up from a number of data collections. If a monthly file is not complete, you can add data from subsequent CSV files that contain data from that month.

NOTE:

You can only append Data at the end of a file, not at the beginning or in the middle.

A Dialogue Box is displayed to give you information on which files will be created. It includes a List Box "Monthly CSV File Actions". This box shows all monthly file actions that could be possible for the current data. After each file one of four possible comments is displayed:-

- No action.
- Add data to file.
- Create new file.
- Error in file.

LOGView automatically builds up the file names from the Unique ID (5 digits), Year (2 digits) and one letter for the month: A= January etc.

When saving a data file which starts in February and ends in April, the dialogue box may say:

- 0000213B.CSV = February 2013: No action
- 0000213C.CSV = March 2013: Add data to file
- 0000213D.CSV = April 2013: Create new file

Rosemount 3493 LOGView

5. OPEN DATA (FILE MENU)



The **Open Data** dialogue box is displayed to open an existing CSV file. LOGView keeps track of the documents you last worked on. You can quickly open one of the last 6 files used by selecting it from the bottom of the File menu. Alternatively it can be opened in the normal Windows manner.

An example of a typical data file has been included in the CSV files sub-directory - it is named **example.csv**.

This example file was created with dates and numbers in the standard UK format. If the PC is set to a different format the file may still be opened by using the **Open Data International** option from the File menu. A dialogue box will prompt for alternative date and number formats.

6. TABLE (VIEW MENU)



Select the table command/button to select the table window. Once data has been collected or loaded by opening a file, it can be tabulated in several different ways.


Sample Table

The Sample table contains the transferred data consisting of sample numbers, dates and times of samples, sample values and flags. The flags tell you whether there were any of the following actions within that sample period:


- FL = Fast Logging
- LE = Lost Echo or Fault
- LE+FL = Lost Echo and Fast Logging

This table also shows information about a Power failure.

- Header table
This table contains the information from the Rosemount 3493 header block or the CSV file header block.
- Other table
This table gives information about Totalizer, Total Flow and Max. Flow values.
- Day table (summary)
This table gives information about daily summaries. Summaries include values of Night Flow. The duration of the night may be defined in **Summary** in the **Configuration** menu
- Day/Month table (summary)
This table shows all daily summaries for one month in one table.
- Month table (summary)
This table shows the summary of one month.

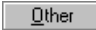

Tables may be navigated by clicking the right mouse button or by selecting  , or simply by using cursor keys.

7. CHART (VIEW MENU)

Same as:  from




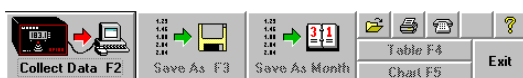
Select the chart command/button to select the chart window. In this window the sample data or daily totals may be charted against a variety of timebases. The different chart types are:-

- Samples chart
Line chart of the sample data.
- Total chart
Bar chart of the daily totals.
- Daily chart
Chart of sample data for 24 hours. The 24-hour period does not necessarily have to start at midnight. For example, you can chart data from 08:00 to 08:00 the next morning.
- Weekly chart
Chart of sample data or totalizer data for 7 days. The first day does not necessarily have to be Monday. For example, you can chart data from Wednesday to the following Tuesday.
- Monthly chart
Chart of sample data or Total data for one calendar month.
-  (Chart bar)
Click on the  button or press F7 to get a list of all available chart types there are. ie. Daily chart, Weekly chart, Monthly chart, "Between Specified Times" chart "Show All" chart and "Average day" chart.
- Average day
This chart is available for the sample data and, for each time of the day, it plots the average value of all the samples in the data file. So, for example, a chart of the typical flow for a month may simply be produced.

The appearance of the charts may be customised by selecting **Chart** via the **Configuration** menu or by clicking the right mouse button. This also allows the addition of maximum and minimum limit lines as well as a cursor line which allows peaks and troughs to be identified accurately.

8. PRINT (FILE MENU)

Same as:  from



Displays the Print Dialogue Box. It is possible to print out any of the tables, charts or summaries outlined below:-

- Daily Summaries
You can select the days you want to print. The table "Day" and all Sample Data will be printed per Day. Note that a value in a rectangle indicates the number of missing samples due to a power failure.
- Monthly Summaries
You can select the months you want to print. The tables "Month" and "Day/Month" will be printed for each month.
- Current Chart
Prints the current chart with limit lines (if selected) but without the cursor line. The Current Chart option is disabled (greyed-out) if you have no chart view (window) of the data.
- Print Button
The Print button prints the current chart or table. Set up the printer using the preferences option in Windows
- Chart Print Setup
Displays the Chart Print Setup Dialogue Box where the line or bar colour, line width, bar style, and the border width can be changed.

Rosemount 3493 LOGView

NOTE:

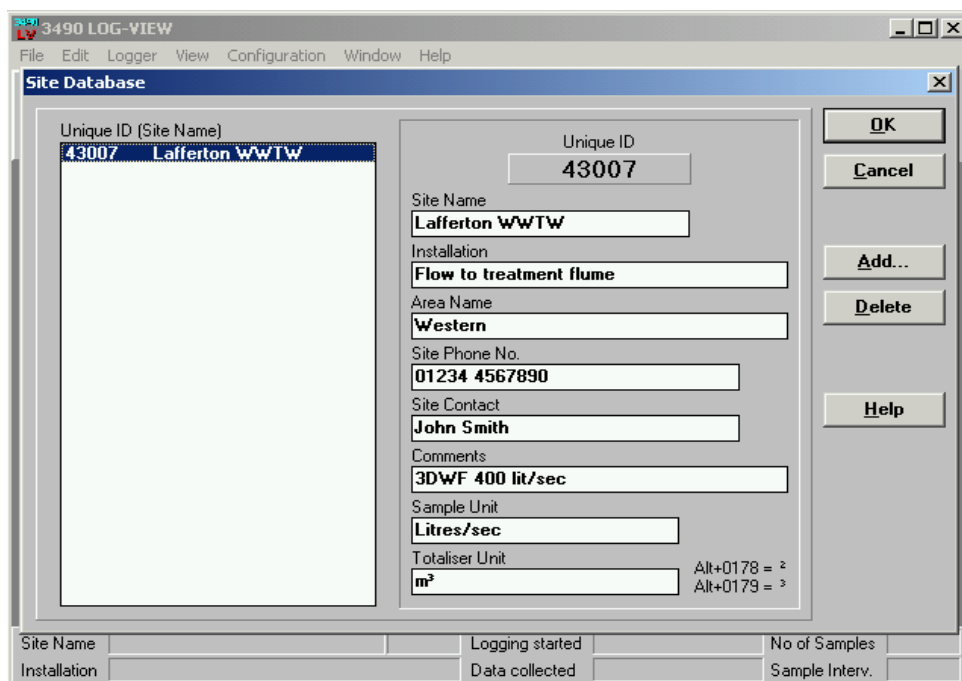
All changeable information can be saved in the configuration file. On leaving LOGView the user is prompted whether changes should be saved. The normal configuration file is called START.INI but others names may be used if more than one configuration is to be stored.

9. SITE DATABASE (CONFIGURATION MENU)

Displays the "Site Database" dialogue box (Figure 4). Every Rosemount 3493 has a unique ID which it sends to the PC along with the sample data. This ID gives the information to the software about the site which assists in the presentation of the data in charts, tables and print-outs. It is not essential that any data be entered but the fields listed below are particularly useful.

- Site Name - appears on the status bar and on print-outs.
- Installation - appears on the status bar and on print-outs.
- Sample Unit - appears on charts, tables and print-outs.
- Totalizer Unit - appears on charts, tables and print-outs.

Figure 4.



Dialogue Box Options

Add

To add a new site record to the site database. Therefore you are asked to enter the Unique ID of the Rosemount 3493, followed by the site data.

Delete

To delete a record from the site database. Select the Unique ID from the list by clicking on its entry in the list box, then press the Delete button.

NOTE:

The site database is saved in the SITEDB.SDB file in the LOGView directory and, if preferred, it can simply be edited or extended using an ordinary text editor.

10. PASSWORD PROTECTION

Access command (Configuration menu)

LOGView can be used to Stop or Restart a Rosemount 3493 using the **Logger Control** function from the **Logger** menu. This control is password protected. The user password is entered using the **Access** function from the **Configuration Menu**. Further users may be added and passwords may be changed.

- Login
Some menu options are protected by user names and passwords. If you select such an option before you have logged in you are asked to login.
- Logout
To log out the current user.
- Change Password
This option is designed to allow ordinary users to change their own passwords.
- Set Access
Displays the Edit Users dialogue box. This dialogue box is designed to enable a 'supervisor' to manage LOGView users.

11. HELP CONTENTS (HELP MENU)



Executes the LOGView help file and shows the “contents” page. This gives a comprehensive Help facility, but throughout LOGView there is context-sensitive Help available, either by local HELP buttons or by pressing F1.

Rosemount 3493 LOGView

APPENDIX A

Connection details

A cable is supplied with the Rosemount 3493 Data Logging System (Figure 5) for connection to a PC serial COM port. However, see Table 1 if a custom connection is required.

Figure 5.

3493 Data Logging System

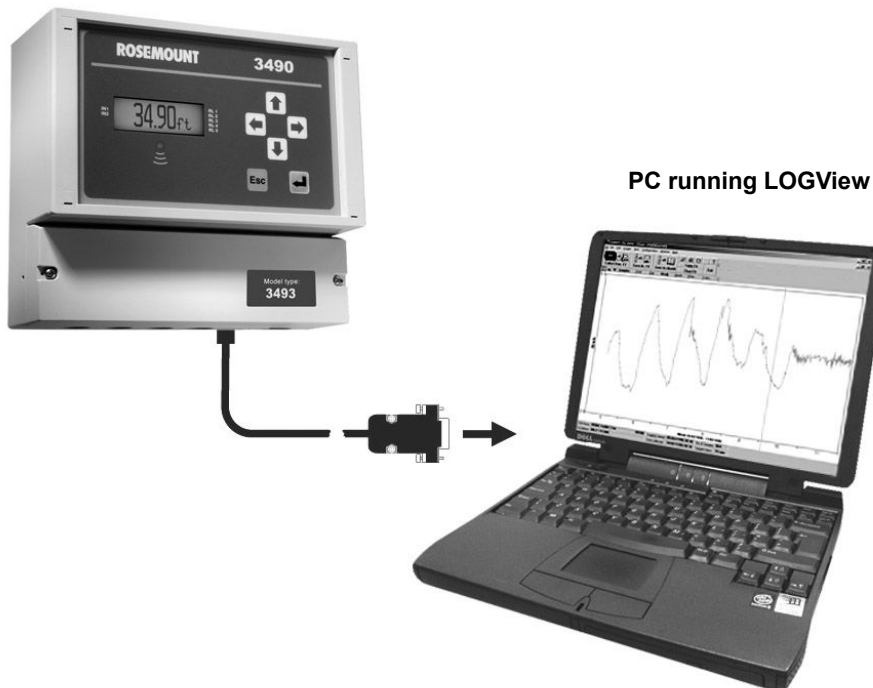


Table 1.

Signal Function	Terminal Block on 3493	PC RS232 Port 9-Way Connection	PC RS232 Port 25-Way Plug
Logger Output	5 (Tx)	PIN 2	PIN 3
Logger Input	4 (Rx)	PIN 3	PIN 2
Ground	6 (0V)	PIN 5	PIN 7

**Emerson Process Management
Rosemount Measurement**
8200 Market Boulevard
Chanhassen MN 55317 USA
Tel (USA) 1 800 999 9307
Tel (International) +1 952 906 8888
Fax +1 952 906 8889

**Emerson Process Management
Latin America**
1300 Concord Terrace, Suite 400
Sunrise Florida 33323 USA
T + 1 954 846 5030

**Emerson Process Management Asia
Pacific Private Limited**
1 Pandan Crescent
Singapore 128461
T (65) 6777 8211
F (65) 6777 0947
Enquiries@AP.EmersonProcess.com

**Emerson Process
Management GmbH & Co.**
Argelsrieder Feld 3
82234 Wessling
Germany
Tel 49 (8153) 9390
Fax 49 (8153) 939172

**Beijing Rosemount Far East
Instrument Co., Limited**
No. 6 North Street,
Hepingli, Dong Cheng District
Beijing 100013, China
T (86) (10) 6428 2233
F (86) (10) 6422 8586

*Standard Terms and Conditions of Sale can be found at www.rosemount.com/terms_of_sale
The Emerson logo is a trademark and service mark of Emerson Electric Co.
Rosemount, the Rosemount logotype, and SMART FAMILY are registered trademarks of Rosemount Inc.
HART is a registered trademark of the HART Communication Foundation.
All other marks are the property of their respective owners.*

© 2013 Rosemount, Inc. All rights reserved.