

# Rosemount Transmitter Interface Software

## Contents

---

Installation guide .....	page 1
General information .....	page 1
Release information .....	page 1
System requirements .....	page 1
List of required FDT® frame and DTM™s .....	page 1
Recommended hardware driver for USB modem option .....	page 2
List of available DTMs .....	page 2
Installing Rosemount Transmitter Interface Software .....	page 3
Getting started with Rosemount Transmitter Interface Software .....	page 4

---

## 1.1 Installation guide

This guide provides information required to install and Rosemount Transmitter Interface Software.

## 1.2 General information

### 1.2.1 Release information

Released Version:     A  
Released Date:        March 26, 2014  
Released by:           Emerson Process Management

### 1.2.2 System requirements

Microsoft® Windows™ 7 Operating System (32 or 64 bit)

### 1.2.3 List of required FDT® frame and DTM™s

Rosemount Transmitter Interface Software (RTIS)  
Rosemount HART® CommDTM (Communications driver)  
Rosemount 4088 Device DTM (4088 User interface Configuration application)

## 1.2.4 Recommended hardware driver for USB modem option

MACTek Viator Modem Driver (32bit or 64 bit)

## 1.2.5 List of available DTMs

Rosemount 248 Temperature Transmitter

Rosemount 644 Temperature Transmitter

Rosemount 2051 Pressure Transmitter

Rosemount 2088 Pressure Transmitter

Rosemount 3051 Pressure Transmitter

Rosemount 3051S Pressure Transmitter

Rosemount 3144P Temperature Transmitter

Rosemount 3300 Radar Level and Interface Transmitter

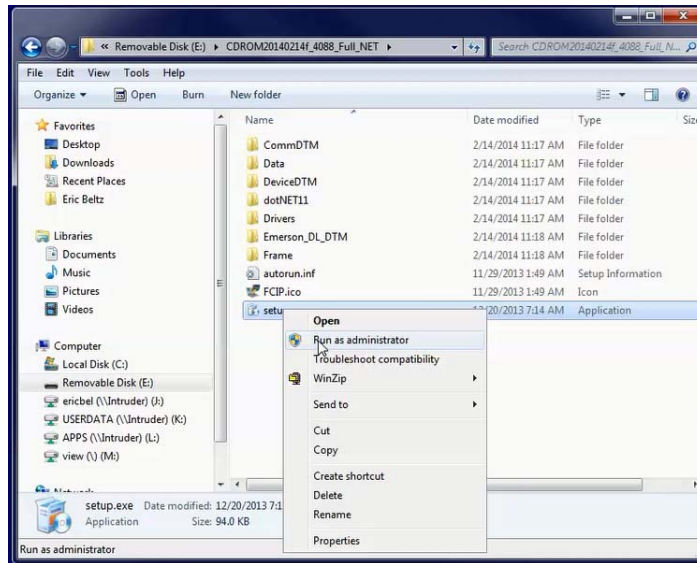
Rosemount 4600 Pressure Transmitter

Rosemount 5300 Radar Level and Interface Transmitter

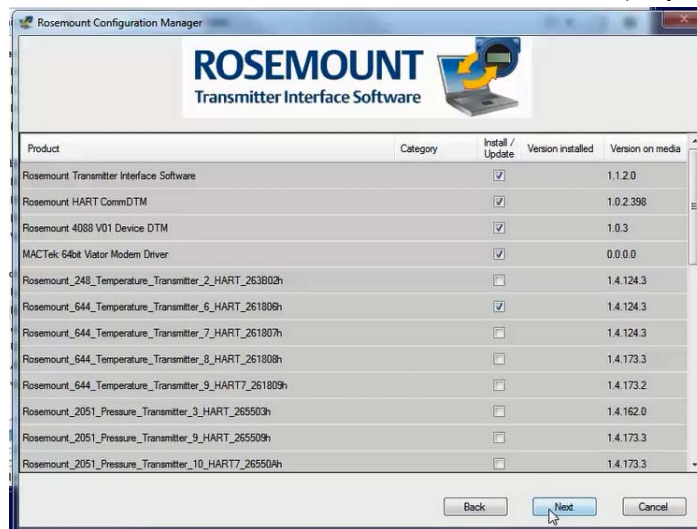
Rosemount 5400 Radar Level Transmitter

## 1.3 Installing Rosemount Transmitter Interface Software

1. Right click the setup.exe file and select **Run as administrator**.



2. Follow the installation wizard. Select all desired DTMs (only the first 3 are required).



### Note

The MACTek modem install will also be automatically selected to run. If the MACTek VIATOR Utility is already installed, this install will allow you to repair or update. For each additional DTM selected, you will be prompted for individual installation options.

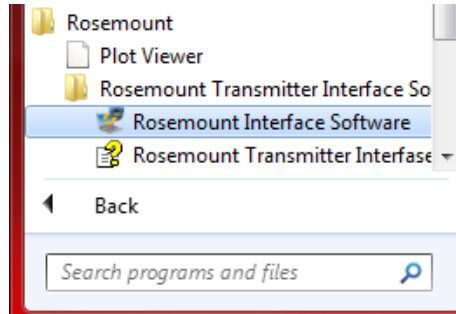
Once installation has started, your next prompt would be to install the HART Device DTM.

3. Run a complete installation for the HART Modem driver and each additional selected DTM.

This completes the installation.

## 1.4 Getting started with Rosemount Transmitter Interface Software

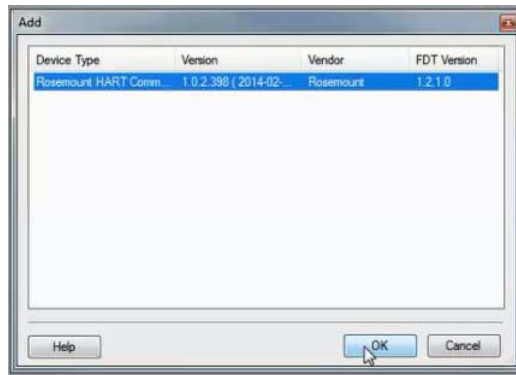
1. Launch Rosemount Interface Software from the desktop or All Programs menu option.



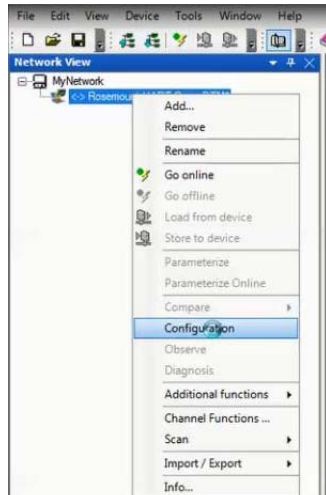
2. Right click **My Network** and click **Add...**



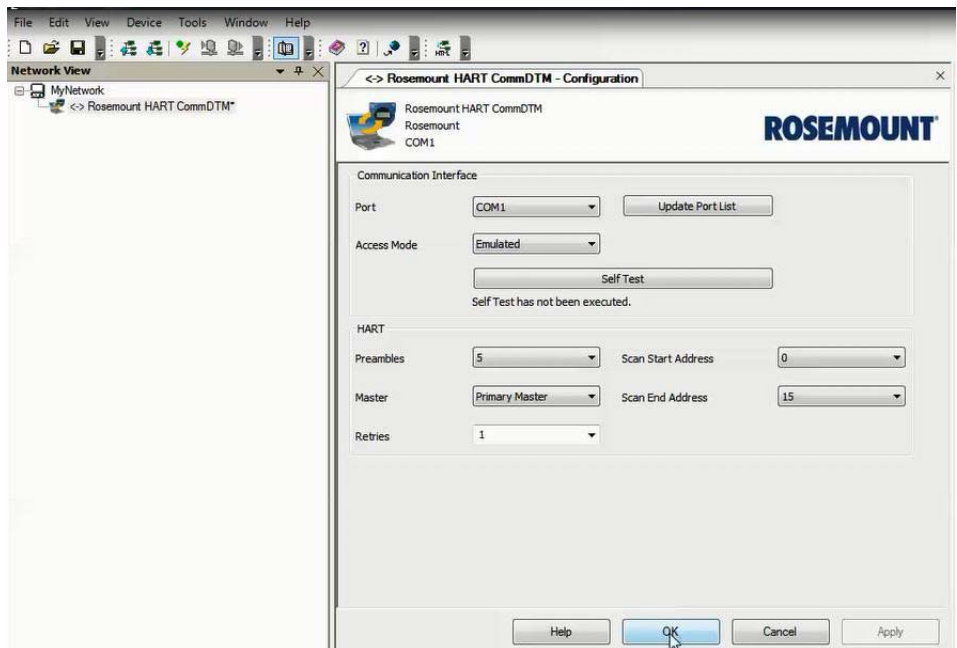
3. Verify "Rosemount HART CommDTM" is selected for Device Type and click **OK**.



4. Under MyNetwork, right click **Rosemount HART CommDTM**, then click **Configuration**.

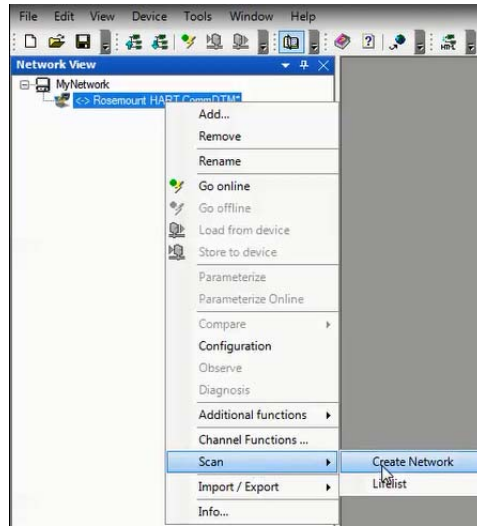


5. Select the correct COM Port.
6. Click the *Access Mode* dropdown and select **Emulated**.
7. Click **Self Test** to check the connection.

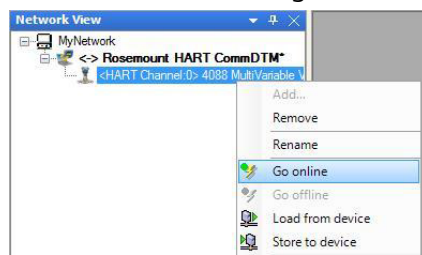


8. If successful, click **Apply**, then **OK**.

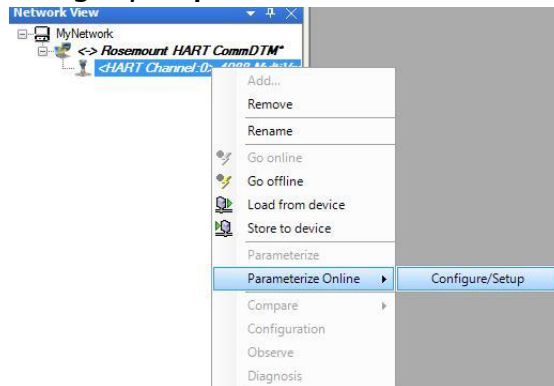
9. Right click **Rosemount HART CommDTM**, click **Scan**, then click **Create Network**.



10. Once a device is found, right click on the **4088 transmitter** and click **Go Online**.



11. Right click on the **4088 transmitter** again and click **Parameterize Online**, then **Configure/Setup**.



12. The configuration process is now launched.



*DTM is a trademark of FDT.  
Windows is a trademark of Microsoft, Incorporated.  
HART is a registered trademark of HART Communications.  
Rosemount and the Rosemount logotype are registered trademarks of Rosemount Inc.  
All other marks are the property of their respective owners.*

© 2014 Rosemount Inc. All rights reserved.

**Emerson Process Management  
Rosemount Division**

8200 Market Boulevard  
Chanhassen, MN 55317 USA  
T (U.S.) 1 800 999 9307  
T (International) 952 906 8888  
F 952 906 8889  
[www.rosemount.com](http://www.rosemount.com)

**Emerson Process Management  
Latin America**

1300 Concord Terrace, Suite 400  
Sunrise Florida 33323 USA  
Tel + 1 954 846 5030

**Rosemount Temperature GmbH**

Frankenstrasse 21  
63791 Karlstein  
Germany  
T 49 6188 992 0  
F 49 6188 992 112

**Emerson Process Management  
Asia Pacific Private Limited**

1 Pandan Crescent  
Singapore 128461  
T 65 6777 8211  
F 65 6777 0947  
[Enquiries@AP.EmersonProcess.com](mailto:Enquiries@AP.EmersonProcess.com)

**Emerson Process Management**

No. 6 North Street  
Hepingli, Dong Cheng District  
Beijing 100013, China  
T 86 10 6428 2233  
F 86 10 6422 8586