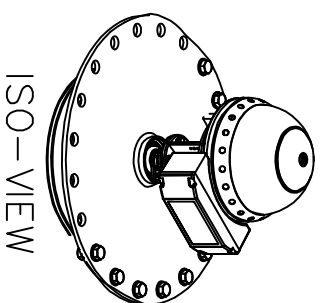
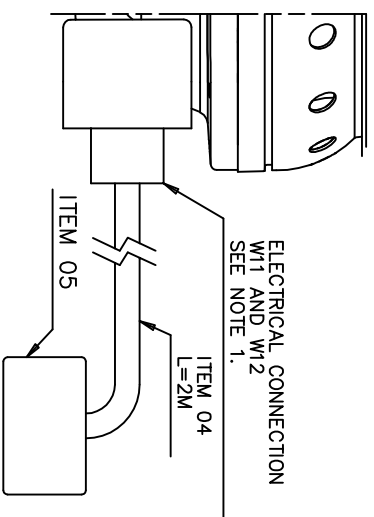
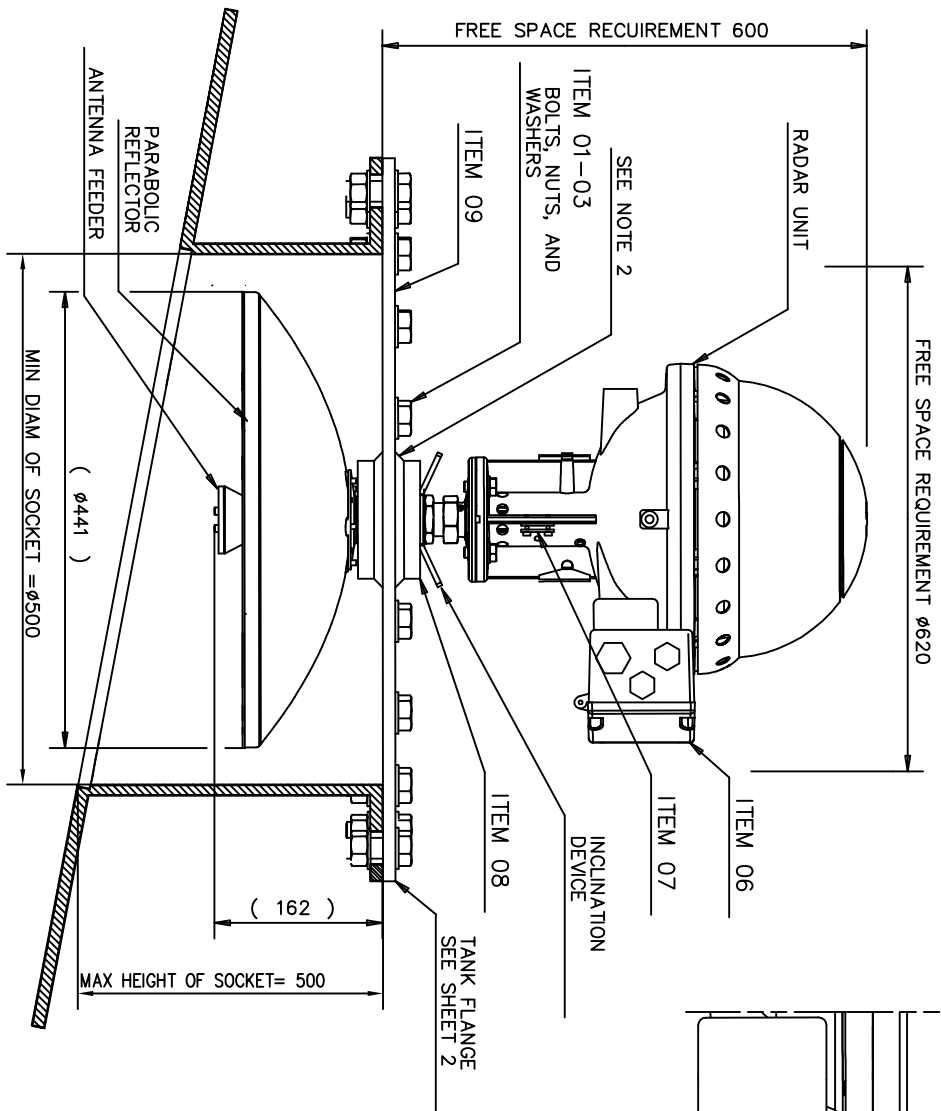
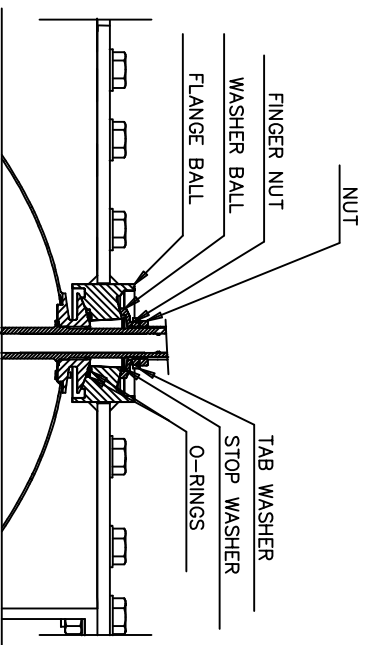


# Product Discontinued



NOTE 2 ITEM 08 IS TO BE WELDED TO TANK FLANGE.  
 SEE DRAWING: MECHANICAL INSTALLATION  
 WELDING OF 138-W 9240003-944 OR SCREWED  
 T30 9240003-947.

NOTE 1 ELECTRICAL CONNECTION IN TRANSMITTER HEAD  
 W1: NON-INTRINSICALLY SAFE CONNECTION  
 CONDUIT THREAD: FEMALE NPT 3/4".  
 W12: INTRINSICALLY SAFE CONNECTION  
 CONDUIT THREAD: FEMALE NPT 3/4".

09	TANK FLANGE, SEE DWG 9240003-944 OR 9250003-947	CUSTOMER
08	FLANGE BALL, PART No. 9240007-581 OR 9240007-582	RTR
07	GROUND CONNECTION (TO BE USED ACCORDING TO NATIONAL CODE OF PRACTISE).	RTR
06	INTEGRATED JUNCTION BOX	RTR (OPTION JB1)
05	Exe, Exi OR EXPLOSION PROOF JUNCTION BOX DEPENDING ON NATIONAL CODE OF PRACTISE.	CUSTOMER (RTR OPTION)
04	CABLE PROTECTION HOSE OR EXPLOSION PROOF CONDUIT DEPENDING ON NATIONAL CODE OF PRACTISE.	CUSTOMER (RTR OPTION HOSE KIT)
01-03	SCREW/NUT/WASHER ACC TO FLANGE STD.	CUSTOMER

ITEM	DESIGNATION	TITLE	INSTALLATION DRAWING TITLE	SUPPLIER
ISSUED BY	WEEK	PRODUCT CODE	ACAD	
GU-HF	0011	REX	SCALE	
APPROVED BY	WEEK	ORIGINAL DWG NO.	1:5	
GU-LN	0011	ø150-072-982	RTG 3930 (P440)	
DOC TYPE	DWG NO.	ISSUE	SHEET	
2	9150 072-982	3	1/2	

FOR MORE INFO, SEE Rosemount TankRadarr Rex INSTALLATION MANUAL.

**ROSEMOUNT**  
Tank Gauging

THE COMPANY ASSUMES NO RESPONSIBILITY FOR THE ACCURACY OF THE INFORMATION CONTAINED HEREIN. THE USER SHALL VERIFY THE ACCURACY OF THE INFORMATION CONTAINED HEREIN. THE COMPANY ASSUMES NO RESPONSIBILITY FOR THE ACCURACY OF THE INFORMATION CONTAINED HEREIN. THE USER SHALL VERIFY THE ACCURACY OF THE INFORMATION CONTAINED HEREIN.