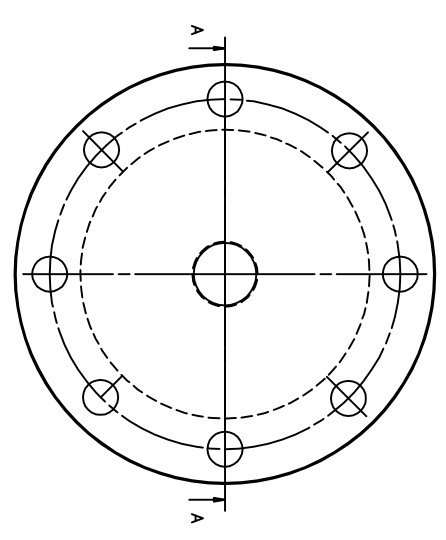
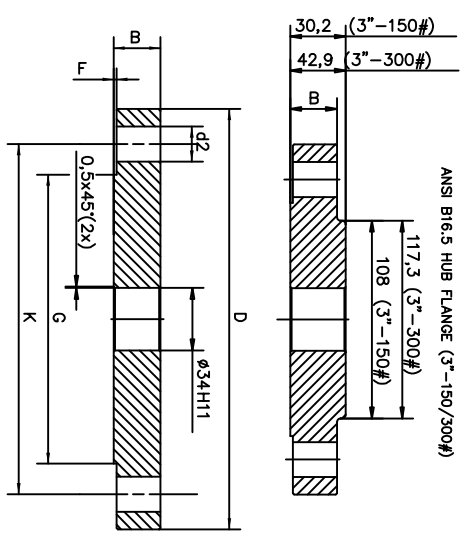


ISSUE	MOORE ORDER NO.	WEEK	ISSUE	MOORE ORDER NO.	WEEK	ISSUE	MOORE ORDER NO.	WEEK
1	SME-3078	0240	2	SME-5624	0710			

PART NO	TYPE	ACC TO STD:	FLANGE		DRILLING TEMPLATE				RAISED FACE			WEIGHT	FLANGE TYPE	GASKET TYPE
			D	B	K	d2	G	F	Kg					
9150074-369	2"-150#	ANSI B16.5	ø152.4	19.05	ø120.6	ø19.05-4X	ø91.9	1.52	2.6				TYPE 05	SEE NOTE 4
9150074-370	2"-300#	ANSI B16.5	ø165.1	22.3	ø127	ø19.05-8X	ø91.9	1.52	3.4				TYPE 05	SEE NOTE 4
9150074-371	2 1/2"-150#	ANSI B16.5	ø177.8	22.3	ø139.7	ø19.05-8X	ø104.6	1.52	4.1				TYPE 05	SEE NOTE 4
9150074-350	2 1/2"-300#	ANSI B16.5	ø190.5	25.4	ø149.4	ø22.35-8X	ø104.6	1.52	5.1				TYPE 05	SEE NOTE 4
9150074-351	3"-150#	ANSI B16.5	ø190.5	23.8	ø152.4	ø19.05-4X	ø127	1.52	4.8				HUB	lo/lb
9150074-351	3"-300#	ANSI B16.5	ø209.5	28.6	ø168.3	ø22.2-8X	ø127	1.52	6.8				HUB	lo/lb
9150074-352	4"-150#	ANSI B16.5	ø228.6	23.8	ø190.5	ø19.05-8X	ø157.2	1.52	6.9					
9150074-353	4"-300#	ANSI B16.5	ø254	31.8	ø200	ø22.2-8X	ø157.2	1.52	11.6					
9150074-373	4"-600#	ANSI B16.5	ø273	44.4	ø215.9	ø25.4-8X	ø157.2	6.35	18					
9150074-354	6"-150#	ANSI B16.5	ø279.4	25.4	ø241.3	ø22.2-8X	ø215.9	1.52	11.6				lo/lb	
9150074-355	6"-300#	ANSI B16.5	ø317.5	36.6	ø269.9	ø22.2-12X	ø215.9	1.52	21.1				lo/lb	
9150074-356	8"-150#	ANSI B16.5	ø342.9	28.5	ø288.4	ø22.2-8X	ø269.9	1.52	20.8				lo/lb	
9150074-357	8"-300#	ANSI B16.5	ø381	41.3	ø330.2	ø25.4-12X	ø269.9	1.52	34.9				lo/lb	
9150074-374	DN50 PN40	EN 1092-1	ø165	20	ø125	ø18-4X	NA	NA	3.2				TYPE 05	SEE NOTE 4
9150074-375	DN65 PN40	EN 1092-1	ø160	14	ø130	ø14-4X	NA	NA	2.2				TYPE 05	SEE NOTE 4
9150074-376	DN65 PN40	EN 1092-1	ø165	22	ø145	ø18-8X	NA	NA	4.3				TYPE 05	SEE NOTE 4
9150074-358	DN80 PN16	EN 1092-1	ø200	20	ø160	ø18-8X	NA	NA	4.7				TYPE 05	SEE NOTE 4
9150074-359	DN80 PN40	EN 1092-1	ø200	24	ø160	ø18-8X	NA	NA	5.8				TYPE 05	SEE NOTE 4
9150074-360	DN100 PN16	EN 1092-1	ø220	20	ø180	ø18-8X	NA	NA	5.5				TYPE 05	SEE NOTE 4
9150074-361	DN100 PN40	EN 1092-1	ø235	24	ø190	ø22-8X	NA	NA	7.4				TYPE 05	SEE NOTE 4
9150074-362	DN150 PN16	EN 1092-1	ø285	22	ø240	ø22-8X	NA	NA	10.3				TYPE 05	SEE NOTE 4
9150074-363	DN150 PN40	EN 1092-1	ø300	28	ø250	ø26-8X	NA	NA	14.4				TYPE 05	SEE NOTE 4
9150074-364	DN200 PN16	EN 1092-1	ø340	24	ø295	ø22-12X	NA	NA	16.3				TYPE 05	SEE NOTE 4
9150074-365	DN200 PN40	EN 1092-1	ø375	34	ø320	ø30-12X	NA	NA	27.4				TYPE 05	SEE NOTE 4



- ④ GASKETS FOR EN 1092-1 FLANGES: SOFT GASKET (EN 1514-1) WITH MIN THICKNESS OF 1.5mm. GASKET FOR ANSI B16.5 FLANGES: SOFT GASKET (lo) WITH MIN THICKNESS OF 1.5mm.
- ③ DIMENSIONS AND TOLERANCES IN ACC. WITH ANSI B16.5 EN 1092-1 AND JIS B 2220 UNLESS OTHERWISE STATED (DIMENSIONS IN TABLE, ONLY REFERENCE MEASURES)
- ② MARKING: IN ACC. WITH ANSI B16.5, EN AND JIS STD. (NO MARKING OF B16.5, 1092-1 OR 2220 ON FLANGE)
- ① MATERIAL: STAINLESS STEEL A182 G-F316L AND EN 10222-5-1.404 (BOTH MATERIALS MARKED ON THE FLANGE AND INCLUDED IN THE INSPECTION DOCUMENT)

9150074-672

ISSUED BY	GU-HF	WEEK	0224	PRODUCED BY	PRO	TITLE	SEE NOTE 1.
APPROVED BY	GU-MK	WEEK	0224	FILE	0	FLANGE, STAINLESS STEEL	
ALL DIMENSIONS ARE IN MILLIMETERS. TOLERANCES UNLESS OTHERWISE STATED: FINISH UNLESS OTHERWISE STATED: DIMENSIONS IN TABLE, ONLY REFERENCE MEASURES: 6.3							
THE COMPANY/OWNER OF THIS DOCUMENT IS AND WILL REMAIN RESPONSIBLE FOR THE ACCURACY OF THE INFORMATION CONTAINED HEREIN. THIS DOCUMENT IS THE PROPERTY OF ROSEHOUNT AND WILL BE REPRODUCED, MODIFIED OR DISTRIBUTED WITHOUT THE WRITTEN PERMISSION OF ROSEHOUNT.							
ISSUE	1	DATE	2	SCALE	1/1	ISSUE	1/1

ROSEHOUNT

9150074-672

9150074-672