

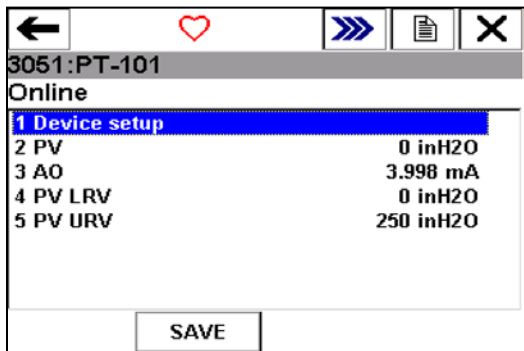
## Device Dashboards in the 475 and 375 Field Communicator

In 2009, Emerson introduced Device Dashboards developed from Human Centered Design practices. These dashboards are human-centric interfaces designed to provide needed information quickly and clearly.

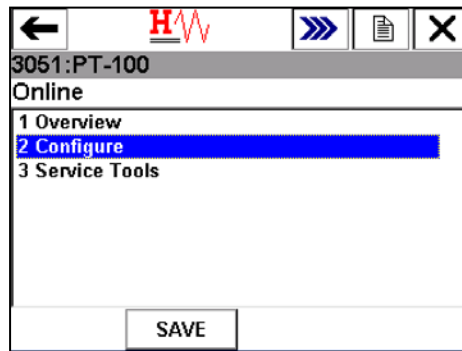
Device Dashboards are now available with the release of 475 and 375 Field Communicator system software version 3.3.

For current users of Emerson Field Communicators, this means that some displays will look different. However, we know you will quickly find that the new interface is much more intuitive and task-based.

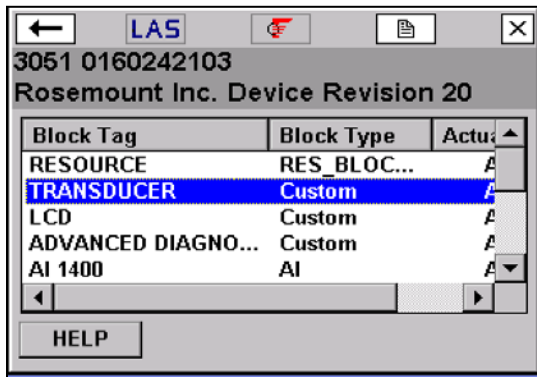
Here are a couple examples of the new menu structure:



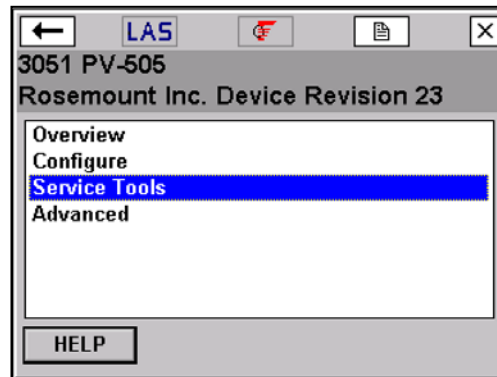
*Previous HART Menu*



*NEW HART Menu*



*Previous Fieldbus Menu*



*NEW Fieldbus Menu*

To help with the transition, we have several [interactive demo videos](#) available at [www.fieldcommunicator.com](http://www.fieldcommunicator.com). You can also contact your device supplier for information on the latest Menu Trees.