

Reference Guide

D301486X412

April 2012

OpenEnterprise Database Upgrade Wizard Reference Guide (V2.83)

Remote Automation Solutions

Website: www.EmersonProcess.com/Remote

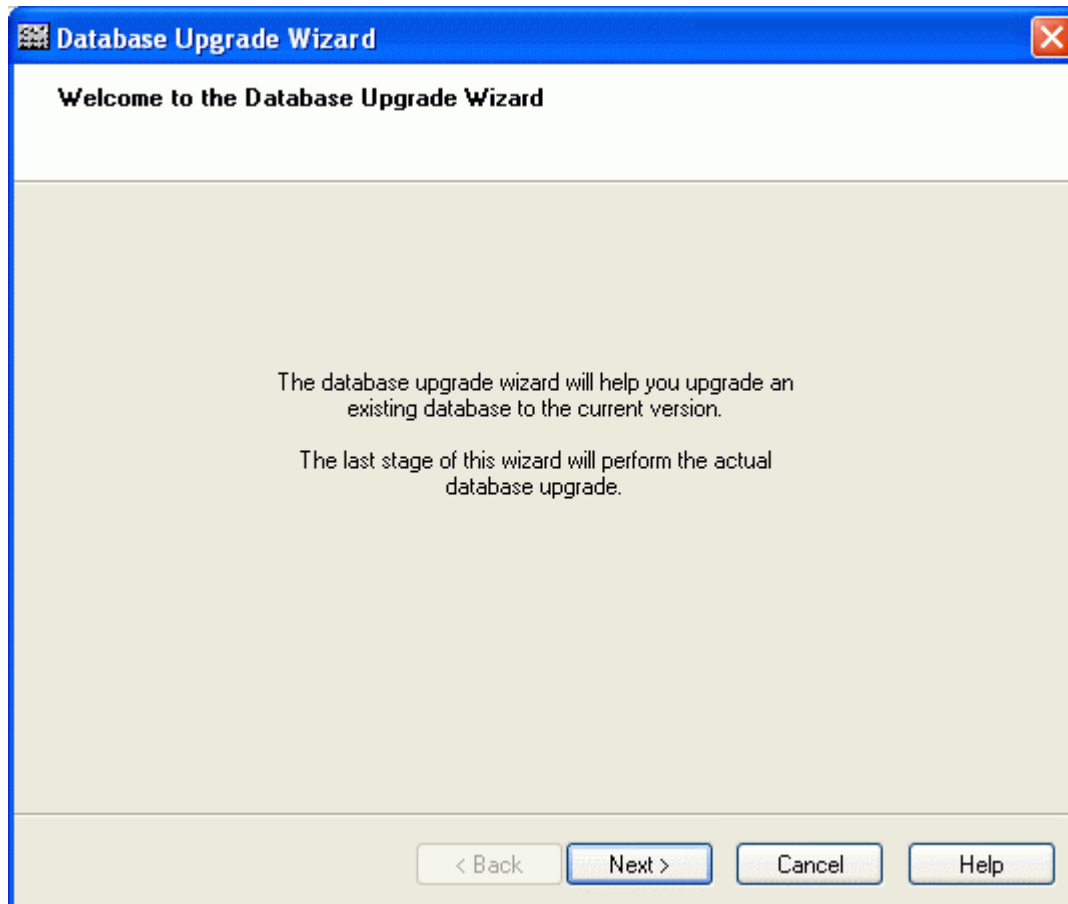


Contents

| | |
|--|-----------|
| 1 Database Upgrade Wizard | 1 |
| 1.1 Starting the Database Upgrade Wizard | 1 |
| 1.1.1 Starting from the Command Line..... | 1 |
| 1.1.2 Starting the DUW Manually | 4 |
| 1.2 Welcome Page..... | 4 |
| 1.2.1 Back Button | 5 |
| 1.2.2 Next Button..... | 5 |
| 1.2.3 Cancel Button | 5 |
| 1.2.4 Help Button..... | 5 |
| 1.3 Backup Existing Database | 5 |
| 1.3.1 Back-up existing database and methods | 6 |
| 1.3.2 Back-up Folder | 6 |
| 1.3.3 Back-up Folder Browse Button..... | 6 |
| 1.3.4 Back Button | 6 |
| 1.3.5 Next Button..... | 6 |
| 1.3.6 Cancel Button | 7 |
| 1.3.7 Help Button..... | 7 |
| 1.4 Database Information..... | 7 |
| 1.4.1 Version..... | 8 |
| 1.4.2 Folder..... | 8 |
| 1.4.3 Load File | 8 |
| 1.4.4 Configuration File | 9 |
| 1.4.5 CL Folder..... | 9 |
| 1.4.6 Use the same folder | 9 |
| 1.4.7 Context | 10 |
| 1.4.8 Save Settings..... | 10 |
| 1.4.9 Back Button | 10 |
| 1.4.10 Next Button..... | 10 |
| 1.4.11 Cancel Button..... | 10 |
| 1.4.12 Help Button..... | 10 |
| 1.5 Security Credentials | 10 |
| 1.5.1 Password Obtained from Server Security | 11 |
| 1.5.2 Password and Confirm Password | 11 |
| 1.5.3 Back Button | 11 |
| 1.5.4 Next Button | 11 |
| 1.5.5 Cancel Button | 11 |
| 1.5.6 Help Button..... | 12 |
| 1.6 Database Upgrade | 12 |
| 1.6.1 Action Pane | 13 |
| 1.6.2 Progress Bar..... | 13 |
| 1.6.3 Current Action..... | 13 |
| 1.6.4 Start Upgrade Button..... | 13 |
| 1.6.5 Cancel Button | 13 |
| 1.6.6 Help Button..... | 13 |
| 2 Index | 14 |

1 Database Upgrade Wizard

A new release of OpenEnterpriseObjectServer may contain database schema changes. The Database Upgrade Wizard (DUW) assists in the process of upgrading an existing database to the current version.



1.1 Starting the Database Upgrade Wizard

The DUW may be started from the command line or may be manually started. When upgrading, it will typically be started automatically, using the command line parameters.

1.1.1 Starting from the Command Line

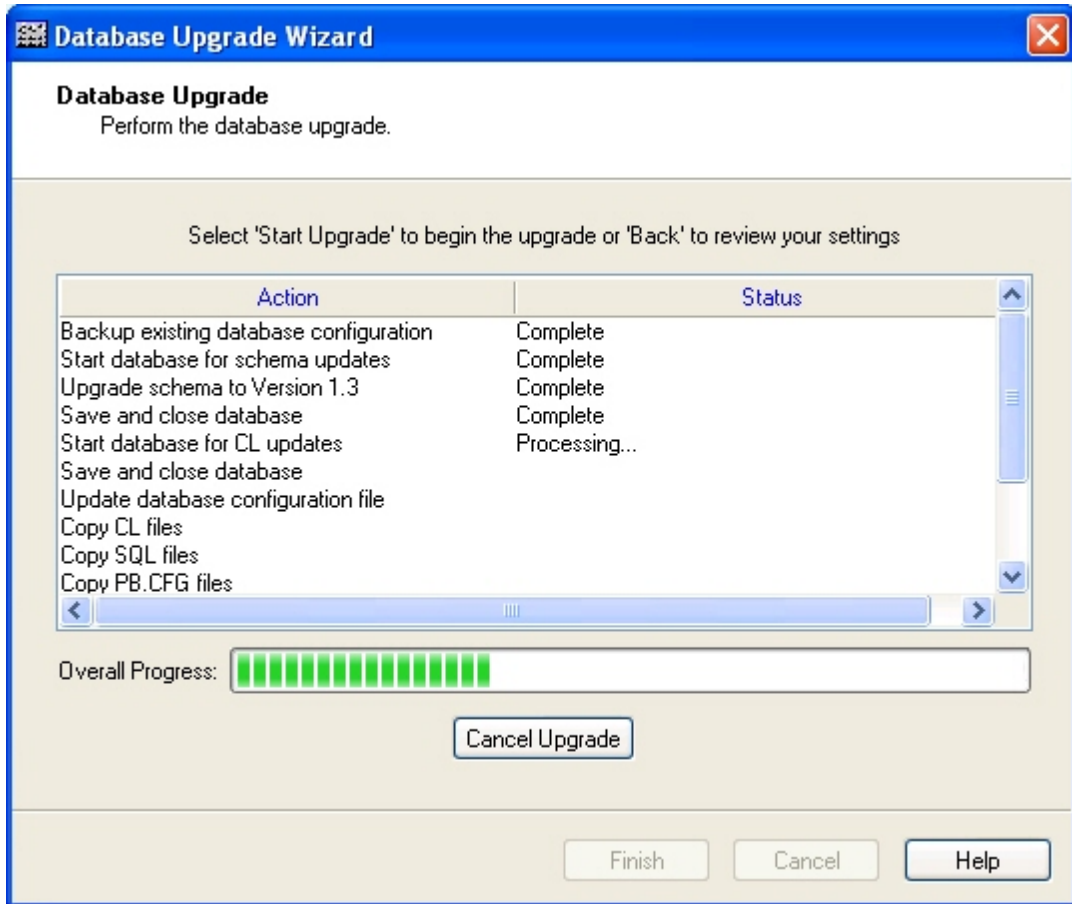
When upgrading a product, the DUW will run automatically using the command line. It may be run in one of three modes:-

1. **Silent**

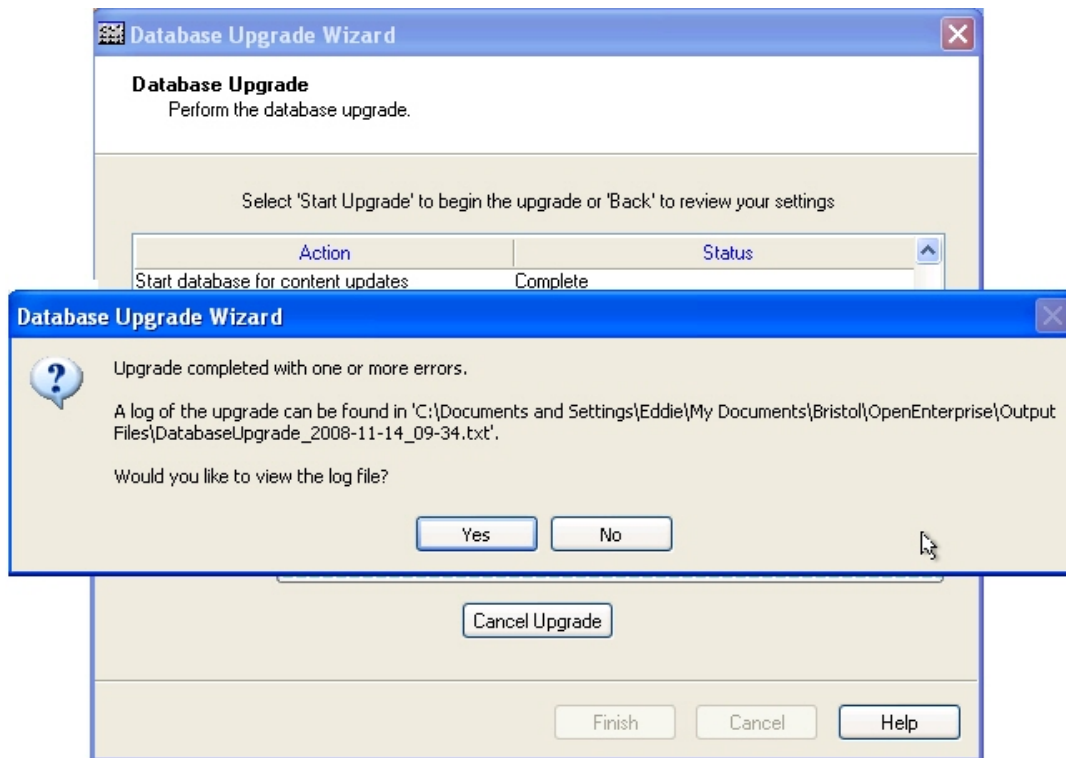
In silent mode, the running of the wizard will be automatic and completely silent – you will not see any dialogs or Message Boxes, and, therefore, no user interaction will be required.

2. **Quiet**

Quiet mode will operate in the same way as silent mode, but the last page of the wizard will be displayed and the upgrade will be started automatically (so you will see the upgrade process), as shown in this screen shot:

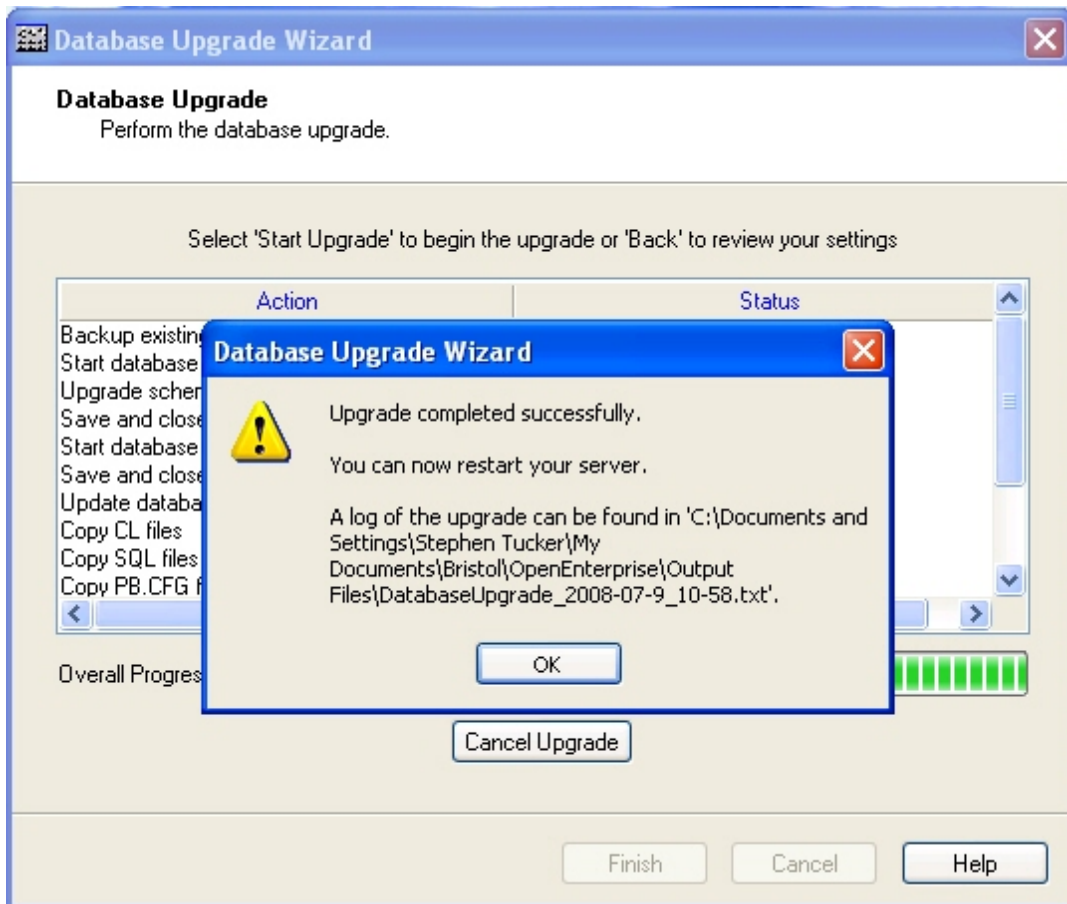


If the upgrade completes with errors, a Message Box will appear to alert you of that fact. You will need to close this Message Box and the wizard to continue.



3. Quiet with Automatic Exit on Success

It is possible to configure Quiet mode to close the wizard automatically when the upgrade completes with no errors. If this isn't configured, the following Message Box will be displayed and the user will be responsible to close the Message Box and the wizard:



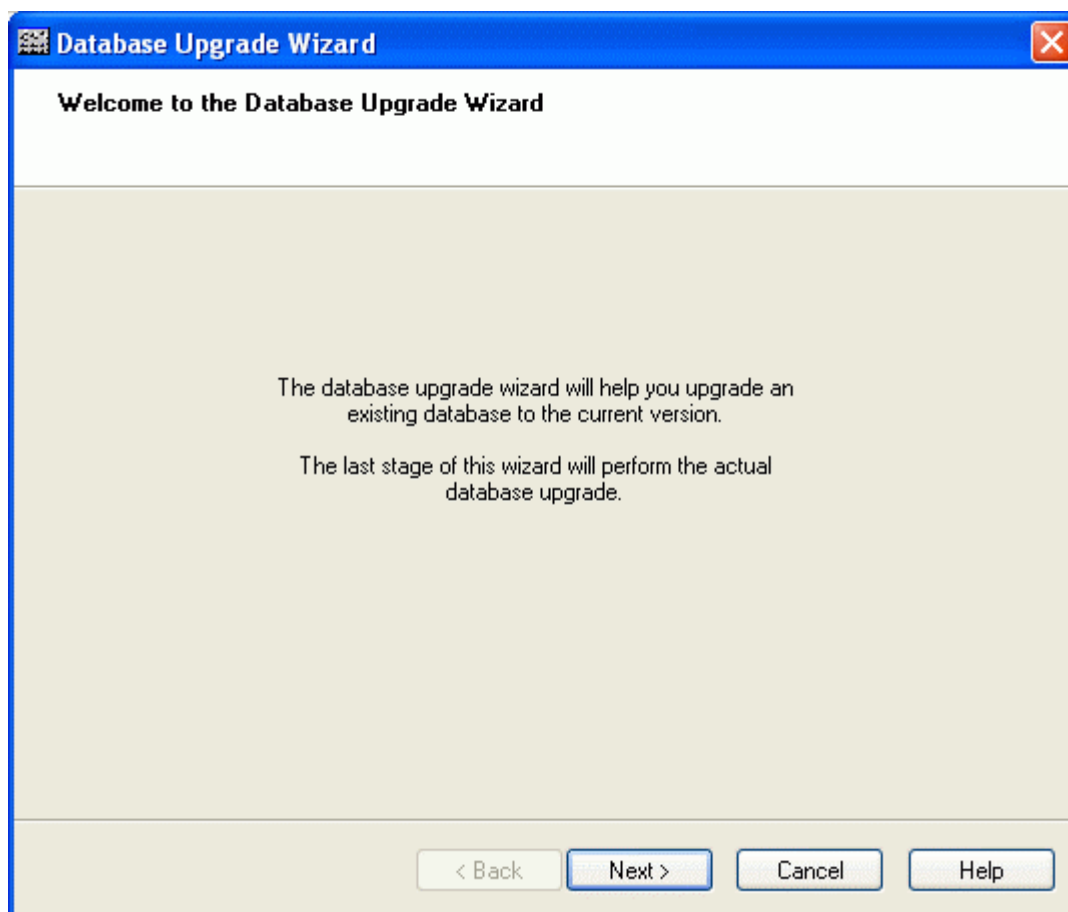
1.1.2 Starting the DUW Manually

If you have just upgraded OpenEnterpriseObjectServer, you shouldn't need to upgrade manually, but if for any reason you do need to upgrade your database manually, select Start>Run, then type 'DatabaseUpgrade' into the 'Open' text field on the 'Run' dialog, then press the [Enter] key.

Before manually initiating the Database Upgrade process, it is necessary to stop the current OpenEnterpriseObjectServer session, if it is running.

1.2 Welcome Page

The Welcome page describes the purpose of the Database Upgrade Wizard.



1.2.1 Back Button

If this button is enabled, you can go back to a previous page and edit your configuration by selecting it.

1.2.2 Next Button

When you are satisfied with the configuration on the current page, select the [Next>] button to move on to the next page of the Wizard.

1.2.3 Cancel Button

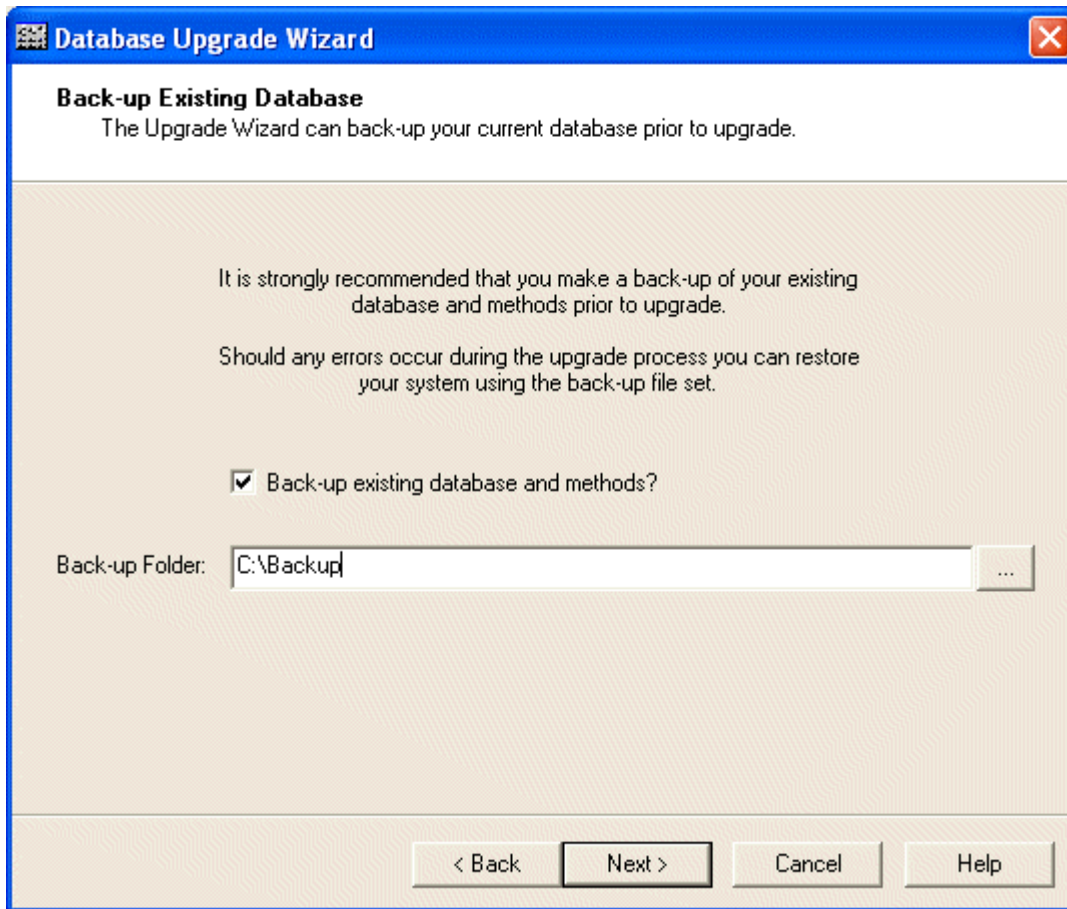
Selecting the [Cancel] Button (when available) will close the Database Upgrade Wizard, and abort the Database Upgrade process.

1.2.4 Help Button

Selection of the [Help] button will open this context sensitive help page.

1.3 Backup Existing Database

This page enables you to specify a backup directory for the current database files before the upgrade takes place. It is strongly recommended that you do this before proceeding.



1.3.1 Back-up existing database and methods

It is recommended that you make a back-up of your current database before upgrading. However, you can skip this step by un-checking this box.

1.3.2 Back-up Folder

The full path to a back-up folder must be entered here before proceeding if the 'Back-up existing database and methods' check box is ticked. A valid folder name can be typed in or can be located by means of the Browse button.

1.3.3 Back-up Folder Browse Button

Click on this button to open the 'Browse for Folder' dialog. Use the scroll bar to select another directory for back-up purposes. A new folder can be created within the currently selected path by selecting the [Make New Folder] button.

1.3.4 Back Button

If this button is enabled, you can go back to a previous page and edit your configuration by selecting it.

1.3.5 Next Button

When you are satisfied with the configuration on the current page, select the [Next>] button to move on to the next page of the Wizard.

1.3.6 Cancel Button

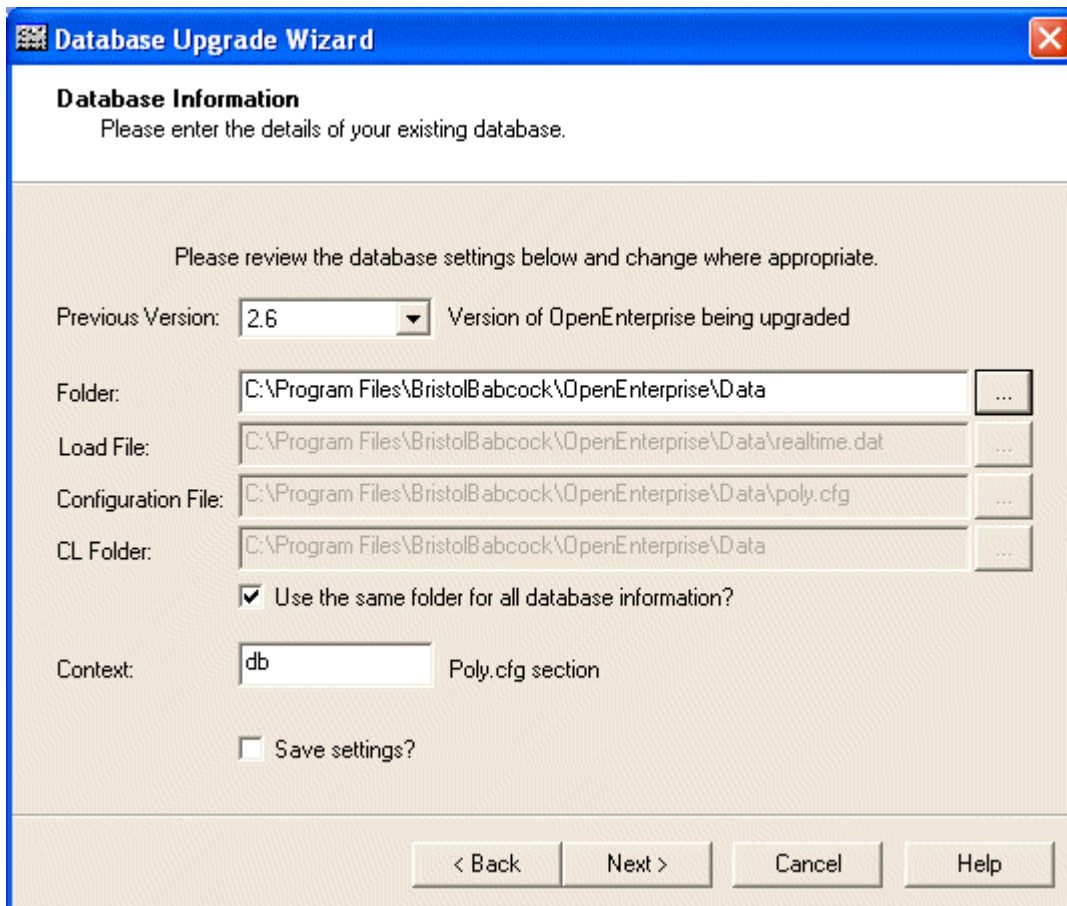
Selecting the [Cancel] Button (when available) will close the Database Upgrade Wizard, and abort the Database Upgrade process.

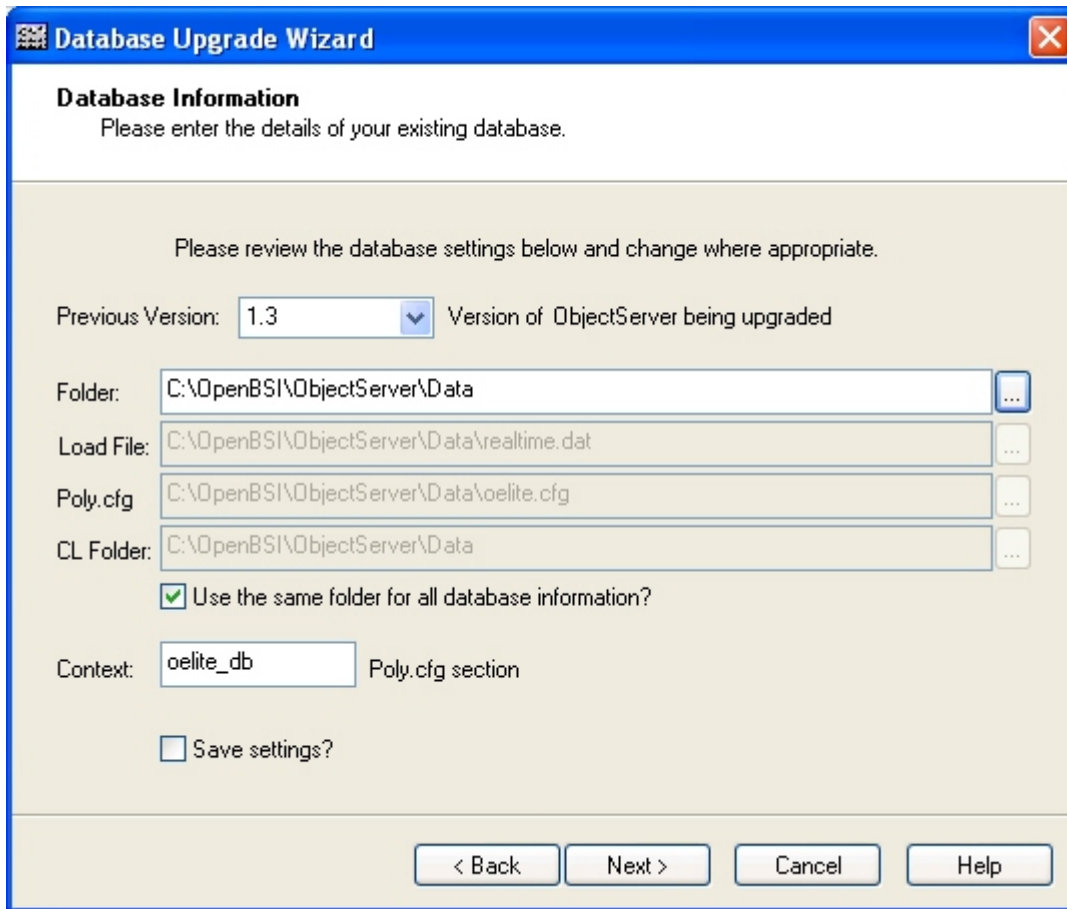
1.3.7 Help Button

Selection of the [Help] button will open this context sensitive help page.

1.4 Database Information

This page prompts for the previous OpenEnterprise version number and for the location of key database files.

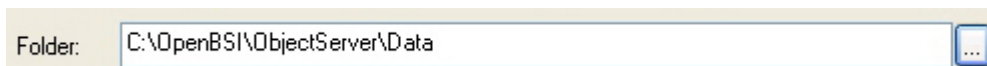




1.4.1 Version

When running the DUW manually, select the OpenEnterprise version that you are upgrading from. The list of previous versions is populated from the contents of DBUpgrade.xml file that is installed in the <install_folder>\bin..

1.4.2 Folder



Type the name of the directory in which the database files reside or click the browse button to the right of this field to browse to the directory.

The value for the 'Folder' text box can currently be specified in the Settings file at OpenEnterprise\Tasks\DatabaseUpgrade.

It is also possible to specify this value using a command line parameter as well, as shown below:

| User Interface Name | Settings File Variable | Command Line Parameter |
|---------------------|------------------------|------------------------|
| Folder | SavedFolder | /f=[data folder] |

1.4.3 Load File



Enter the absolute filename of your database load file (typically 'realtime.dat').

If the 'Use the same folder for all database information?' box is checked, this field will be disabled. If the load file for the database is in another directory to the SQL scripts and CL files, un-check the 'Use the same folder...' box and this field will become enabled. You can type the correct directory in or search for it using the browse button to the right of the field.

The value for the 'Load File' text box can currently be specified in the Settings file at OpenEnterprise\Tasks\DatabaseUpgrade.

It is also possible to specify this value using a command line parameter as well, as shown below:

| User Interface Name | Settings File Variable | Command Line Parameter |
|---------------------|------------------------|------------------------|
| Load File | SavedLoadFile | /l=[loadfile name] |

1.4.4 Configuration File

Poly.cfg

Enter the absolute filename of your database configuration file (typically 'poly.cfg').

If the 'Use the same folder for all database information?' box is checked, this field will be disabled. If the configuration file for the database is in another directory to the SQL scripts and CL files, un-check the 'Use the same folder...' box and this field will become enabled. You can type the correct directory in or search for it using the browse button to the right of the field.

The value for the 'Configuration' text box can currently be specified in the Settings file at OpenEnterprise\Tasks\DatabaseUpgrade.

It is also possible to specify this value using a command line parameter as well, as shown below:

| User Interface Name | Settings File Variable | Command Line Parameter |
|---------------------|------------------------|---------------------------|
| Poly.cfg | SavedPolyCfg | /c=[database config file] |

1.4.5 CL Folder

CL Folder:

Enter the absolute folder where your database CL files reside.

If the 'Use the same folder for all database information?' box is checked, this field will be disabled. If the CL files for the database are in another directory to the SQL scripts, un-check the 'Use the same folder...' box and this field will become enabled. You can type the correct directory in or search for it using the browse button to the right of the field.

The value for the 'CL Folder' text box can currently be specified in the Settings file at OpenEnterprise\Tasks\DatabaseUpgrade.

It is also possible to specify this value using a command line parameter as well, as shown below:

| User Interface Name | Settings File Variable | Command Line Parameter |
|---------------------|------------------------|------------------------|
| CL Folder | SavedClFolder | /m=[CL folder] |

1.4.6 Use the same folder

Check this box when your database loadfile, configuration file and CL files reside in the same folder.

If the 'Use the same folder for all database information?' box is checked, the 'Load File', 'Configuration File' and 'CL Folder' fields will be disabled. If the load file, Configuration file or CL files for the database are in a different directory to the Data directory, or from each other, un-check the 'Use the same folder...' box and these fields will become enabled. You can type the correct directory in or search for it using the browse button to the right of the field.

1.4.7 Context

Context: Poly.cfg section

Type in here the name of the section within the database configuration file (the poly.cfg by default) which defines the resources to be used by the OpenEnterprise Database. The database section of this configuration file has the default heading of 'db'.

The value for the 'Folder' text box can currently be specified in the Settings file at OpenEnterprise\Tasks\DatabaseUpgrade.

It is also possible to specify this value using a command line parameter as well, as shown below:

| User Interface Name | Settings File Variable | Command Line Parameter |
|---------------------|------------------------|------------------------|
| Context | SavedContext | /x=[database context] |

1.4.8 Save Settings

If this box is checked, the configuration set by the user during this upgrade process will be saved for future upgrades.

1.4.9 Back Button

If this button is enabled, you can go back to a previous page and edit your configuration by selecting it.

1.4.10 Next Button

When you are satisfied with the configuration on the current page, select the [Next>] button to move on to the next page of the Wizard.

1.4.11 Cancel Button

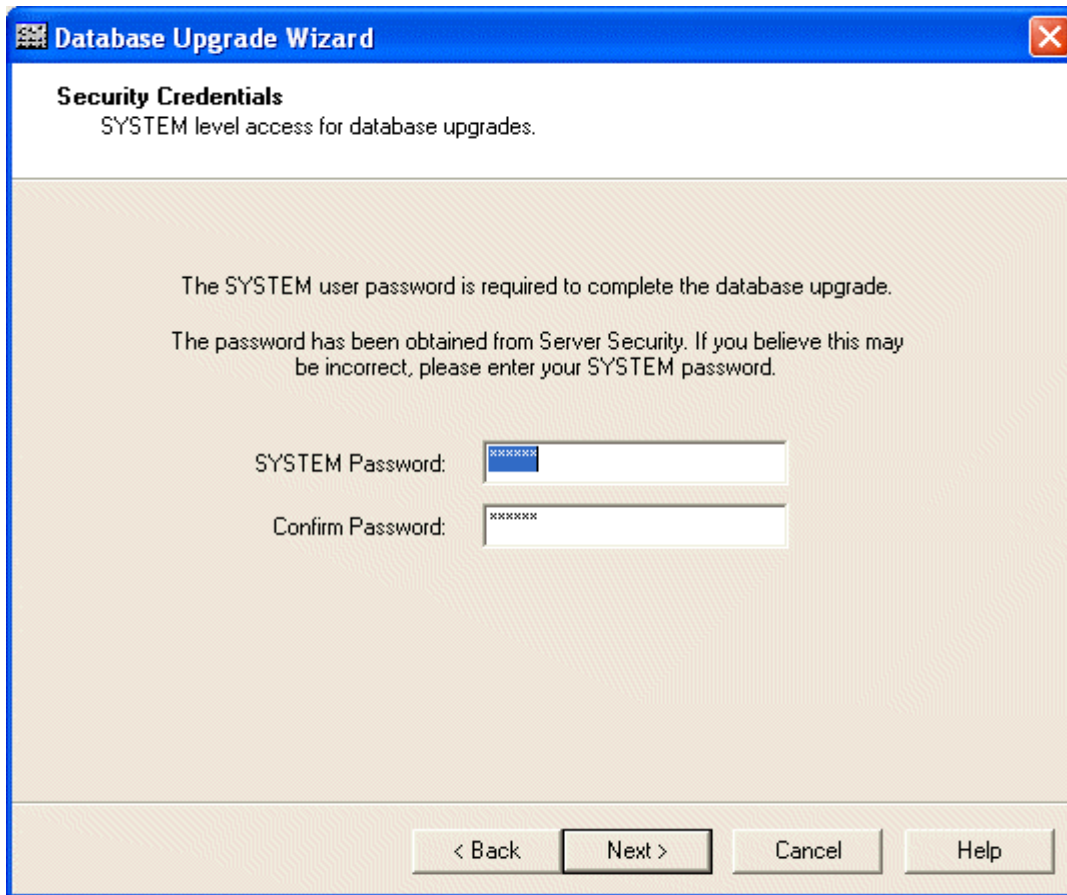
Selecting the [Cancel] Button (when available) will close the Database Upgrade Wizard, and abort the Database Upgrade process.

1.4.12 Help Button

Selection of the [Help] button will open this context sensitive help page.

1.5 Security Credentials

The Security Credentials page will prompt the user for the SYSTEM user password. The SYSTEM user's password is required in order to perform the database upgrade.



1.5.1 Password Obtained from Server Security

The Database Upgrade wizard will attempt to obtain the SYSTEM user's password from Server Security. If successful, this message is displayed on the wizard dialog.

1.5.2 Password and Confirm Password

If the Database Upgrade Wizard has been able to obtain the SYSTEM user's password from Server Security, you can leave these items as they are. Otherwise, enter and confirm the password for the SYSTEM user. The two passwords will be checked for being identical when the [Next>] button is selected.

1.5.3 Back Button

If this button is enabled, you can go back to a previous page and edit your configuration by selecting it.

1.5.4 Next Button

When you are satisfied with the configuration on the current page, select the [Next>] button to move on to the next page of the Wizard.

1.5.5 Cancel Button

Selecting the [Cancel] Button (when available) will close the Database Upgrade Wizard, and abort the Database Upgrade process.

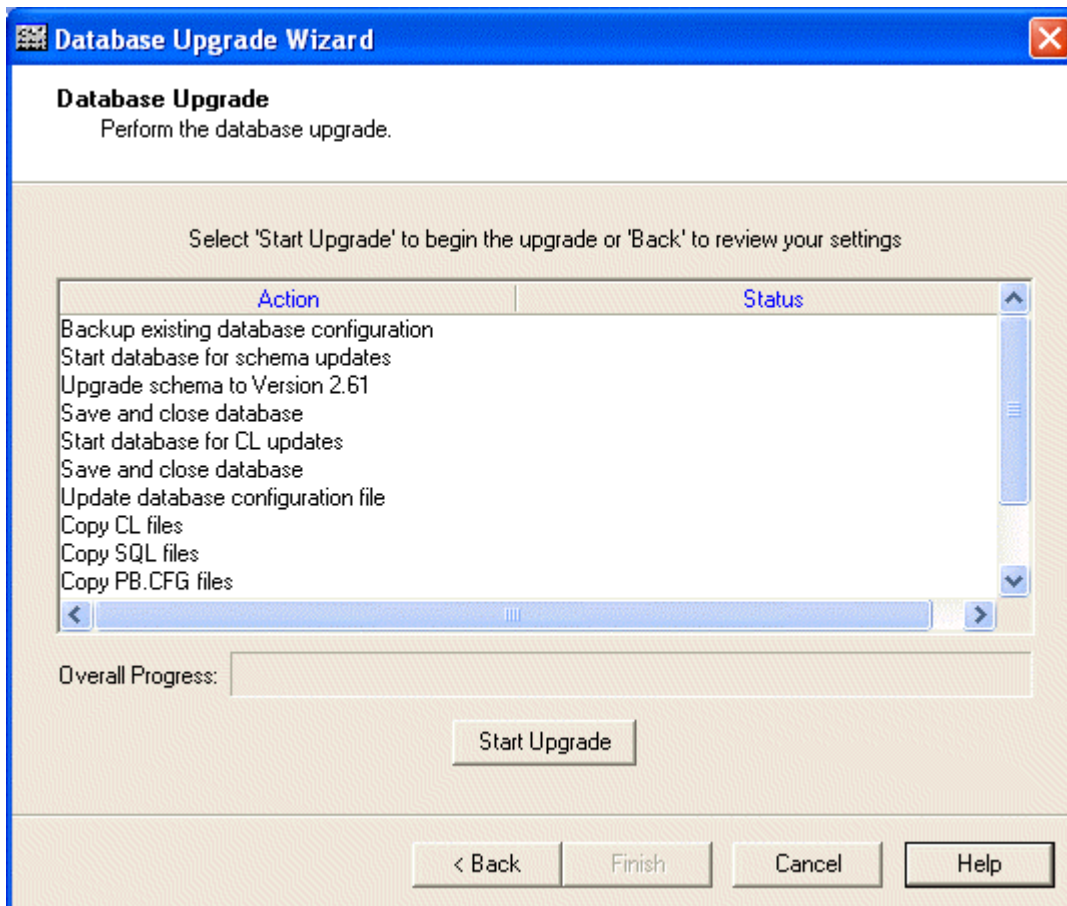
1.5.6 Help Button

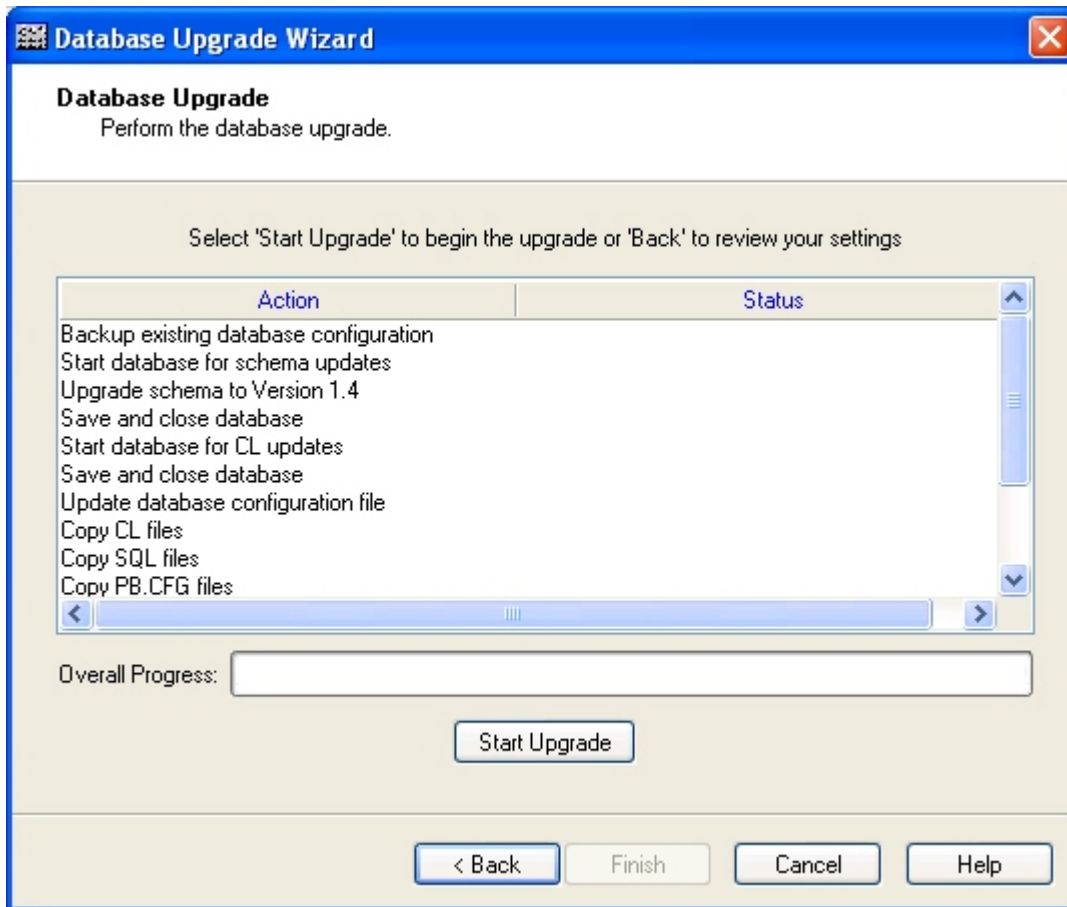
Selection of the [Help] button will open this context sensitive help page.

1.6 Database Upgrade

The final page will perform the database upgrade. If any errors are detected, a message box will inform the user and ask if the log file should be displayed. On a successful upgrade, a message box will be displayed indicating that the server can now be restarted.

The upgraded database files will be placed in the location(s) specified on the Database Information page. Note that if the upgrade is cancelled before it completes, the database will be in an unknown state, so it must be restored from the backup database directory before any subsequent upgrade attempts. A log file of all upgrade actions named *databaseUpgrade_<date>.txt* will be found in the default output directory specified by the Settings Editor in the OpenEnterprise\Directories\Output value.





1.6.1 Action Pane

Details of the Database Upgrade actions will be displayed here, together with a status report as each action is completed.

1.6.2 Progress Bar

The progress of the upgrade is displayed here to provide feedback to the user.

1.6.3 Current Action

As each action of the upgrade process is undertaken, it will be displayed in this non-editable field.

1.6.4 Start Upgrade Button

Select this button to begin the upgrade. Initially, the button is enabled. Once selected, the process begins and this button is disabled until the upgrade is completed.

1.6.5 Cancel Button

Selecting the [Cancel] Button (when available) will close the Database Upgrade Wizard, and abort the Database Upgrade process.

1.6.6 Help Button

Selection of the [Help] button will open this context sensitive help page.

2 Index

A

Action Pane 15

B

Back Button 7, 9, 12, 13

Back-up 8

Back-up existing database 8

Backup Existing Database 8

Back-up Folder 8

Back-up Folder Browse Button 8

C

Cancel Button 7, 9, 12, 13, 15

CL Folder 11

Configuration File 11

Confirm Password 13

Context 12

Current Action 15

D

Database 4, 8, 9, 14

Database Information 9

Database Upgrade 4, 14

Database Upgrade Wizard 4

 Starting 4

Database Upgrade Wizard Overview 4

F

Folder 10

H

Help Button 8, 9, 12, 13, 15

L

Load File 10

M

Methods 8

N

Next Button 7, 9, 12, 13

P

Password 13

Password Obtained 13

Progress Bar 15

S

Same folder 11

 Use 11

Save Settings 12

Security Credentials 12

Server Security 13

Start Upgrade Button 15

Starting 4

 Database Upgrade Wizard 4

U

Use 11

 same folder 11

V

Version 10

W

Welcome Page 7

Reference Guide

D301486X412

April 2012

DISCLAIMER

Bristol, Inc., Bristol Babcock Ltd, Bristol Canada, BBI SA de CV and the Flow Computer Division, are wholly owned subsidiaries of Emerson Electric Co. doing business as Remote Automation Solutions ("RAS"), a division of Emerson Process Management. ROC, FloBoss, ROCLINK, Bristol, Bristol Babcock, ControlWave, TeleFlow and Helicoid are trademarks of RAS. AMS, PlantWeb and the PlantWeb logo are marks of Emerson Electric Co. The Emerson logo is a trademark and service mark of the Emerson Electric Co. All other marks are property of their respective owners.

The contents of this publication are presented for informational purposes only. While every effort has been made to ensure informational accuracy, they are not to be construed as warranties or guarantees, express or implied, regarding the products or services described herein or their use or applicability. RAS reserves the right to modify or improve the designs or specifications of such products at any time without notice. All sales are governed by RAS' terms and conditions which are available upon request. RAS does not assume responsibility for the selection, use or maintenance of any product. Responsibility for proper selection, use and maintenance of any RAS product remains solely with the purchaser and end-user.

Engineered and supported by:

Remote Automation Solutions,

Blackpole Road, Worcester, WR3 8YB, UK

Registered office: Meridian East, Leicester, LE19 1UX

Registered in England and Wales, Registration No. 00671801

VAT Reg No. GB 705 353 652

Emerson Process Management
Remote Automation Solutions
1100 Buckingham St
Watertown, CT 06795
T 1 (860) 945 2200
F 1 (860) 945 2278
www.EmersonProcess.com/Remote
binfo@EmersonProcess.com

Emerson Process Management
Remote Automation Solutions
Blackpole Road
Worcester, WR3 8YB
T 44 (0) 1905 856848
F 44 (0) 1905 856930
www.EmersonProcess.com/Remote
oedsupport@EmersonProcess.com

