

Reference Guide

D301496X412

April 2012

OpenEnterprise Locked Objects Reference Guide (V2.83)

Remote Automation Solutions

Website: www.EmersonProcess.com/Remote



Contents

| | | |
|----------|----------------------------------|----------|
| 1 | Locked Objects Tool..... | 1 |
| 1.1 | Locked Objects Main Dialog | 1 |
| 1.2 | Table List..... | 1 |
| 1.3 | Locked Objects List..... | 1 |
| 1.4 | Unlock Button..... | 2 |
| 1.5 | Refresh Button | 2 |
| 1.6 | Close Button..... | 2 |
| 2 | Index | 3 |

1 Locked Objects Tool

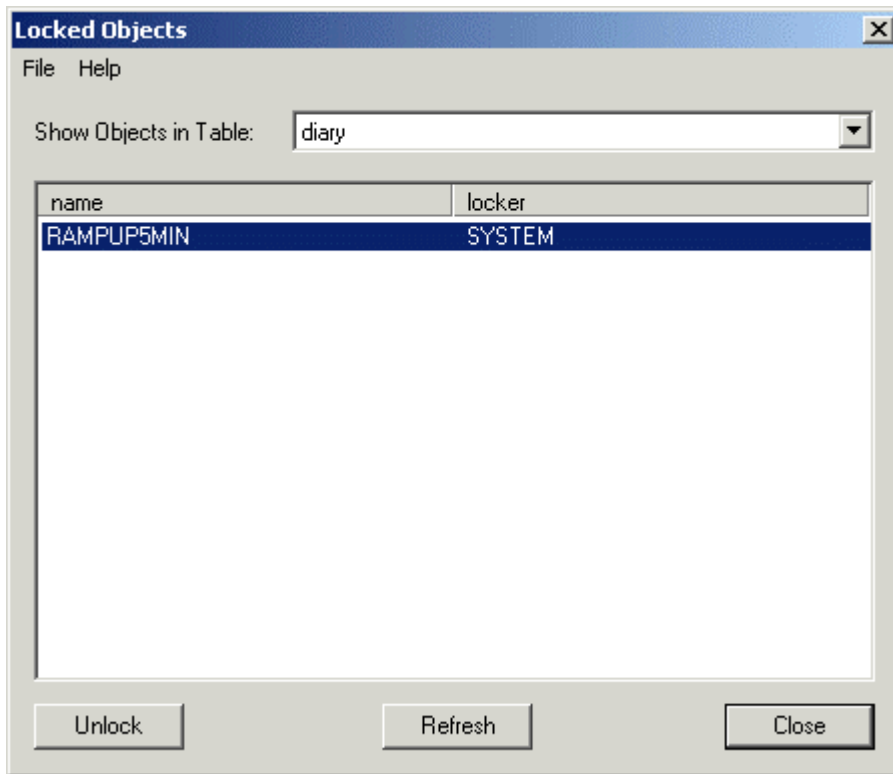
Tables which are derived from the Object or Signal tables have object locking functionality such that any object that is being edited using the configuration tools is marked as locked by the user for the duration of the modification.

When an object is locked by a user, that object cannot be accessed for modification by another user. When the modification is completed, the object is released, and another user may access it for modification.

Occasionally, an object may not be released properly. If this happens, the Locked Objects tool can be used to unlock the locked object.

1.1 Locked Objects Main Dialog

The Locked Objects Main Dialog enables Administrative users to unlock objects that have not been released properly.



1.2 Table List

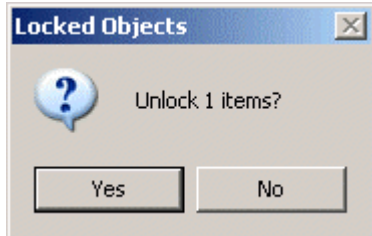
This drop down list displays all tables that have locking functionality. Select the required table from the list.

1.3 Locked Objects List

This list displays locked objects and lockers within the selected table. When an object is selected the [Unlock] button becomes enabled.

1.4 Unlock Button

When a locked object is selected from the Locked Objects List, this button is enabled for selection. Before the action is processed, the user is prompted for confirmation: -



If the [Yes] button is selected, the object is unlocked. Selection of the [No] button aborts the process.

1.5 Refresh Button

When selected, the Locked Objects List is refreshed, and any new locked objects will be displayed.

1.6 Close Button

When selected, the Locked Objects Main Dialog will close immediately.

2 Index

C

Close Button..... 4

L

Locked Objects List..... 3

Locked Objects Main Dialog 3

Locked Objects Overview 3

R

Refresh Button..... 4

T

Table List 3

U

Unlock Button..... 4

Reference Guide

D301496X412

April 2012

DISCLAIMER

Bristol, Inc., Bristol Babcock Ltd, Bristol Canada, BBI SA de CV and the Flow Computer Division, are wholly owned subsidiaries of Emerson Electric Co. doing business as Remote Automation Solutions ("RAS"), a division of Emerson Process Management. ROC, FloBoss, ROCLINK, Bristol, Bristol Babcock, ControlWave, TeleFlow and Helicoid are trademarks of RAS. AMS, PlantWeb and the PlantWeb logo are marks of Emerson Electric Co. The Emerson logo is a trademark and service mark of the Emerson Electric Co. All other marks are property of their respective owners.

The contents of this publication are presented for informational purposes only. While every effort has been made to ensure informational accuracy, they are not to be construed as warranties or guarantees, express or implied, regarding the products or services described herein or their use or applicability. RAS reserves the right to modify or improve the designs or specifications of such products at any time without notice. All sales are governed by RAS' terms and conditions which are available upon request. RAS does not assume responsibility for the selection, use or maintenance of any product. Responsibility for proper selection, use and maintenance of any RAS product remains solely with the purchaser and end-user.

Engineered and supported by:

Remote Automation Solutions,

Blackpole Road, Worcester, WR3 8YB, UK

Registered office: Meridian East, Leicester, LE19 1UX

Registered in England and Wales, Registration No. 00671801

VAT Reg No. GB 705 353 652

Emerson Process Management
Remote Automation Solutions
1100 Buckingham St
Watertown, CT 06795
T 1 (860) 945 2200
F 1 (860) 945 2278
www.EmersonProcess.com/Remote
binfo@EmersonProcess.com

Emerson Process Management
Remote Automation Solutions
Blackpole Road
Worcester, WR3 8YB
T 44 (0) 1905 856848
F 44 (0) 1905 856930
www.EmersonProcess.com/Remote
oedsupport@EmersonProcess.com

