

Reference Guide

D301505X412

April 2012

OpenEnterprise NW3000 Archive Configuration Reference Guide (V2.83)

Remote Automation Solutions

Website: www.EmersonProcess.com/Remote



Contents

1	NW3000 Archive Configuration	1
1.1	Selecting the Archive File	1
1.2	Retrieving Archive Configuration	1
1.3	Inserting Archive Configuration	1
1.4	Exporting Archive Configuration	1
2	Main Dialog	1
2.1	Menu Options	2
2.1.1	File Menu	2
2.1.1.1	Export Configuration to File	2
2.1.1.2	SQL Export Dialog	2
2.1.1.2.1	SQL Filename	2
2.1.1.2.2	Browse button	3
2.1.2	Help Menu	3
2.1.2.1.1	NW3000 Archives Help	3
2.1.2.1.2	About NW3000 Archives	3
2.2	Device List	3
2.3	Archive Number	3
2.4	Retrieving Archive Configuration	3
2.5	Inserting Archive Configuration	3
2.6	Archive Columns	3
3	Index	4

1 NW3000 Archive Configuration

NW3000 Archiving requires configuration of a number of OpenEnterprise and OpenBSI components. For a full description of the whole configuration process, please refer to the NW3000 Archiving Overview help file.

Archive collection enables OpenEnterprise to upload stored data points from Bristol RTUs after a communication failure. The archive data can be used to backfill signal history for appropriately configured historical streams. The configuration tool is used to import Archive file configuration from the RTU to OpenEnterprise in order to facilitate subsequent data import. There are four simple steps in the use of the NW3000 Archive Configuration tool , as described below.

1.1 Selecting the Archive File

This is done through selecting a NW3000 RTU from the *Device* list and entering the *Archive Number* into the appropriate field on the Main Dialog.

1.2 Retrieving Archive Configuration

Done by selecting the **[Retrieve from Device]** button on the Main Dialog. The Archive Configuration tool enables the user to view Archive configuration information from any Bristol RTU connected to the OpenEnterprise server.

1.3 Inserting Archive Configuration

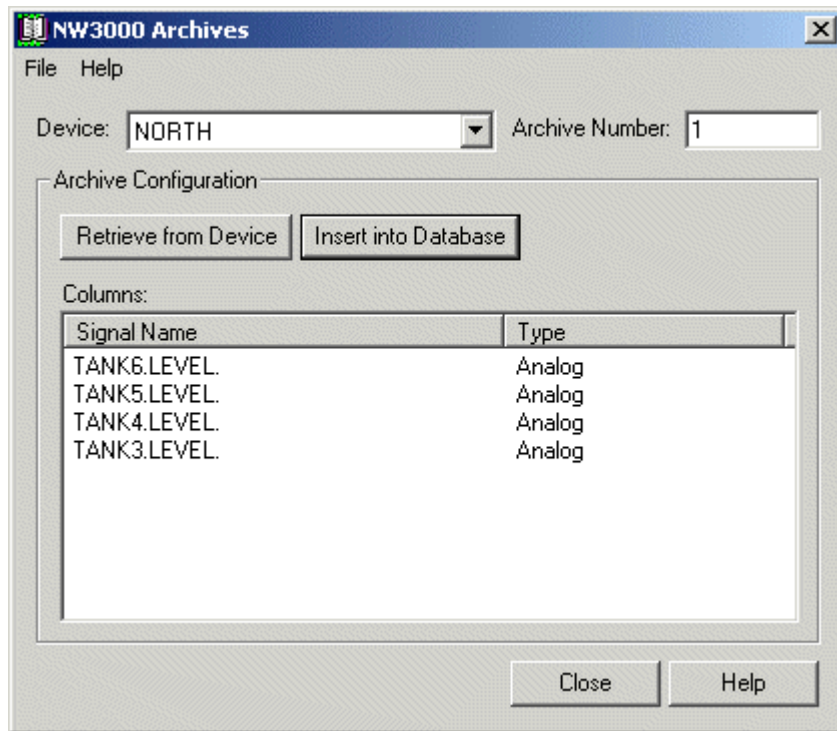
Done by selection of the **[Insert into Database]** button on the dialog. The tool enables the user to insert this Archive configuration information from RTUs into the NW3000Archive table within the OpenEnterprise database. This information is essential if OpenEnterprise is required to write Archive data collected from the RTU into the database.

1.4 Exporting Archive Configuration

An option is provided from the *File* menu to export the current Archive setup to an sql script, in order that it can be readily recovered if the need arises to rebuild the OpenEnterprise database.

2 Main Dialog

The NW3000 Archive Configuration tool's main dialog enables the user to view and import NW3000 Archive configuration from Bristol RTUs into the OpenEnterprise database, and to export the configuration to an SQL script file. Click the hotspots* on the image below for further information what each feature does.



2.1 Menu Options

2.1.1 File Menu

The File Menu contains the following options:-

2.1.1.1 Export Configuration to File

When selected, the SQL Export dialog will be displayed. This enables the NW3000 Archive configuration currently displayed within the 'Archive Columns' list to be saved to an SQL script file.

You will be prompted for a name and location for the file. There is a directory browse button available to assist in this process. When the name and directory for the file has been chosen, the file will be created, and a message informing you of the successful creation of the file will be displayed.

2.1.1.2 SQL Export Dialog

The SQL Export Dialog enables you to select a directory and provide a name for the export file. Click the hotspots* on the dialog for further information.



2.1.1.2.1 SQL Filename

The name for the exported file can be typed in here. If a file name with no path is provided, the file will be saved in the application's working directory (by default this is *C:\Program Files\Bristol\OpenEnterprise\bin*, but it depends on the individual installation of OpenEnterprise). The browse button can be used to navigate to a preferred directory.

2.1.1.2.2 Browse button

Selection will open a Windows 'Save As' dialog. The 'Save As Type' field will be set to 'sql Files (*.sql)'. The user can navigate to a preferred directory for saving the export file.

If the browse button is used, the path and filename will be entered automatically into the 'File Name' field, along with the .sql extension.

2.1.2 Help Menu

The Help menu item contains the following options:-

2.1.2.1.1 NW3000 Archives Help

This option will open this help file.

2.1.2.1.2 About NW3000 Archives

This option displays information about the OpenEnterprise version and build number that you are using, as well as support contact details.

2.2 Device List

At first, the Device list will appear empty, but if you click on it, a list of RTUs connected to the Server will be displayed. Select the RTU you are interested in and the **[Get Configuration]** button will be enabled.



2.3 Archive Number

An RTU may contain multiple Archive files. Multiple Archives within a single RTU are distinguished by a sequential number from 1 to 65,535. If there are more Archives within the RTU, type the number of the Archive in here, and select the **[Get Configuration]** button to retrieve the configuration for that Archive. The Archive configuration for each Archive will be added to the 'Archive Columns' Display.

2.4 Retrieving Archive Configuration

Once an RTU has been selected from the 'Devices' drop-down list, the **[Retrieve from Device]** button becomes enabled. When this button is selected, configuration for the specific Archive file displayed in the 'Archive' field is collected from the selected RTU and placed into the 'Columns' list.

2.5 Inserting Archive Configuration

Once the Archive configuration has been retrieved and displayed in the 'Columns' list, the **[Insert into Database]** button becomes enabled. The displayed Archive configuration can then be imported into the OpenEnterprise database by selecting this button. The configuration information displayed in the 'Columns' list will be inserted into the NW3000Archive table.

2.6 Archive Columns

The 'Columns' list displays each Signal within the Archive, and its type (analog or digital). As the Archives within each RTU are retrieved, the configuration for each Archive will be added to the 'Archive Columns' list.

3 Index

A

Archive Columns 6

Archive Number 5

B

Browse button 5

D

Device List..... 5

G

Get Configuration 5

H

Help Menu 5

I

Import.....5

M

Main Dialog3

N

NW3000 Archive Configuration Overview3

S

SQL Export Dialog.....4

SQL Filename5

Reference Guide

D301505X412

April 2012

DISCLAIMER

Bristol, Inc., Bristol Babcock Ltd, Bristol Canada, BBI SA de CV and the Flow Computer Division, are wholly owned subsidiaries of Emerson Electric Co. doing business as Remote Automation Solutions ("RAS"), a division of Emerson Process Management. ROC, FloBoss, ROCLINK, Bristol, Bristol Babcock, ControlWave, TeleFlow and Helicoid are trademarks of RAS. AMS, PlantWeb and the PlantWeb logo are marks of Emerson Electric Co. The Emerson logo is a trademark and service mark of the Emerson Electric Co. All other marks are property of their respective owners.

The contents of this publication are presented for informational purposes only. While every effort has been made to ensure informational accuracy, they are not to be construed as warranties or guarantees, express or implied, regarding the products or services described herein or their use or applicability. RAS reserves the right to modify or improve the designs or specifications of such products at any time without notice. All sales are governed by RAS' terms and conditions which are available upon request. RAS does not assume responsibility for the selection, use or maintenance of any product. Responsibility for proper selection, use and maintenance of any RAS product remains solely with the purchaser and end-user.

Engineered and supported by:

Remote Automation Solutions,

Blackpole Road, Worcester, WR3 8YB, UK

Registered office: Meridian East, Leicester, LE19 1UX

Registered in England and Wales, Registration No. 00671801

VAT Reg No. GB 705 353 652

Emerson Process Management
Remote Automation Solutions
1100 Buckingham St
Watertown, CT 06795
T 1 (860) 945 2200
F 1 (860) 945 2278
www.EmersonProcess.com/Remote
binfo@EmersonProcess.com

Emerson Process Management
Remote Automation Solutions
Blackpole Road
Worcester, WR3 8YB
T 44 (0) 1905 856848
F 44 (0) 1905 856930
www.EmersonProcess.com/Remote
oedsupport@EmersonProcess.com

