

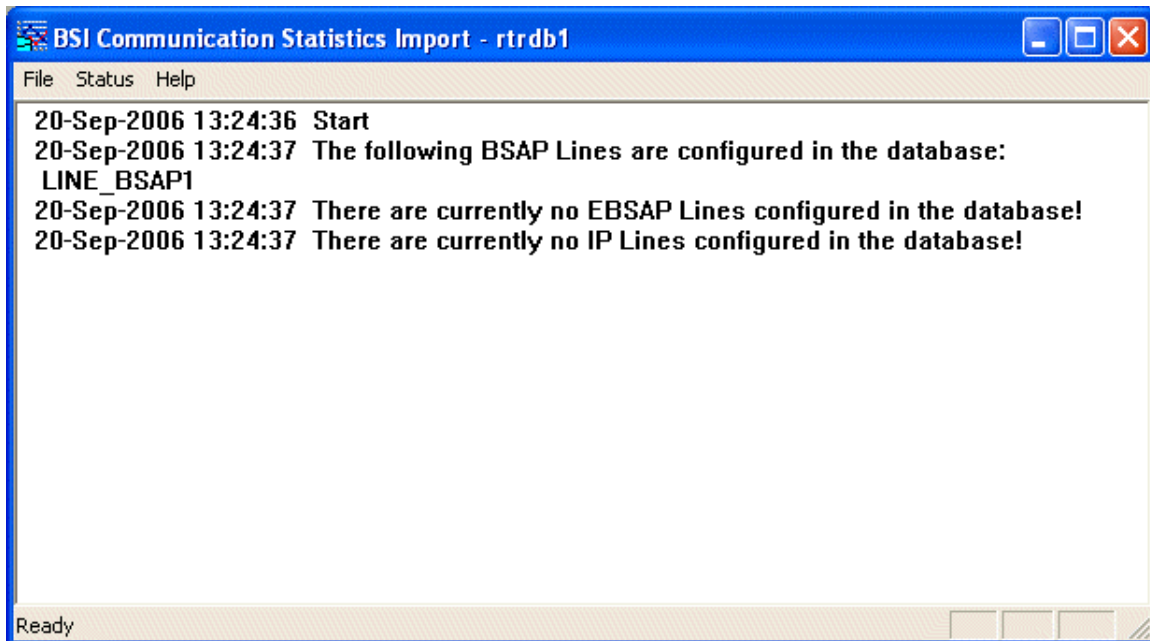
OpenEnterprise OpenBSI Commstats Import Reference Guide (V2.83)

Contents

1	BSI Commstats Import Overview	1
1.1	Running the Commstats Import Component.....	1
1.1.1	Session Manager.....	1
1.1.2	The Windows 'Start' Button	1
1.2	Command Line Parameters	2
2	BSI Commstats Import Interface	2
2.1	BSI Commstats Menu Bar.....	2
2.1.1	File Menu	3
2.1.1.1	Configure.....	3
2.1.1.1.1	Configuration Dialog	3
2.1.1.1.1.1	Monitor BSAP Lines	3
2.1.1.1.1.2	Monitor IP Lines	3
2.1.1.1.1.3	Monitor EBSAP Lines.....	3
2.1.1.1.1.4	Monitor Backup Lines.....	4
2.1.1.1.1.5	BSI Line Stats Poll Period	4
2.1.1.1.1.6	BSA Line Stats Global Poll Period	4
2.1.1.2	Exit	4
2.1.2	Status Menu.....	4
2.1.2.1	List IP Lines.....	4
2.1.2.2	List BSAP Lines	5
2.1.2.3	List EBSAP Lines	5
2.1.2.4	List Backup Lines	5
2.1.2.5	Debug Mode.....	5
2.1.2.6	Debug Mask	5
2.1.2.6.1	Status.....	6
2.1.2.6.2	Progress	6
2.1.2.6.3	Error	6
2.1.2.6.4	Function	6
2.1.2.6.5	SQL.....	6
2.1.3	Help Menu	6
2.1.3.1	BSI Commstats Help.....	7
2.1.3.2	About BSICommstatsImport	7
2.2	BSI Commstats Status Pane	7
3	Glossary	7
4	Index	9

1 BSI Commstats Import Overview

The BSI Commstats Import component extracts information directly from OpenBSI to provide communications statistics that are written to tables within the OpenEnterprise database.



The BSI Commstats Import component periodically interrogates the OpenBSI communication statistics API and populates the NW3000Device and the Line tables with device and communication statistics.

The component's user interface allows the user to enable/disable the monitoring of any line types, define data refresh rates, and configure status messaging in the main Status Pane.

1.1 Running the Commstats Import Component

There are a number of ways that the BSI Commstats Import component can be started.

1.1.1 Session Manager

The BSI Commstats component can be added as a Task to the OpenEnterprise Session. To do this, open your Session in Session Manager and then select **Session>AddTask** from the menu bar. Give the Session Task a name and select BSICommStatsImport.exe as the program to run. Type any command line parameters into the 'Program Arguments' field, and then work through the rest of the wizard pages.

1.1.2 The Windows 'Start' Button

Click the Windows **Start** button and follow the menu hierarchy to select the Comm Stats Import component:-

Start>Programs>OpenEnterprise>Network3000>Comm Stats Import.

Note: This option uses the default parameters (local database, debug mode off).

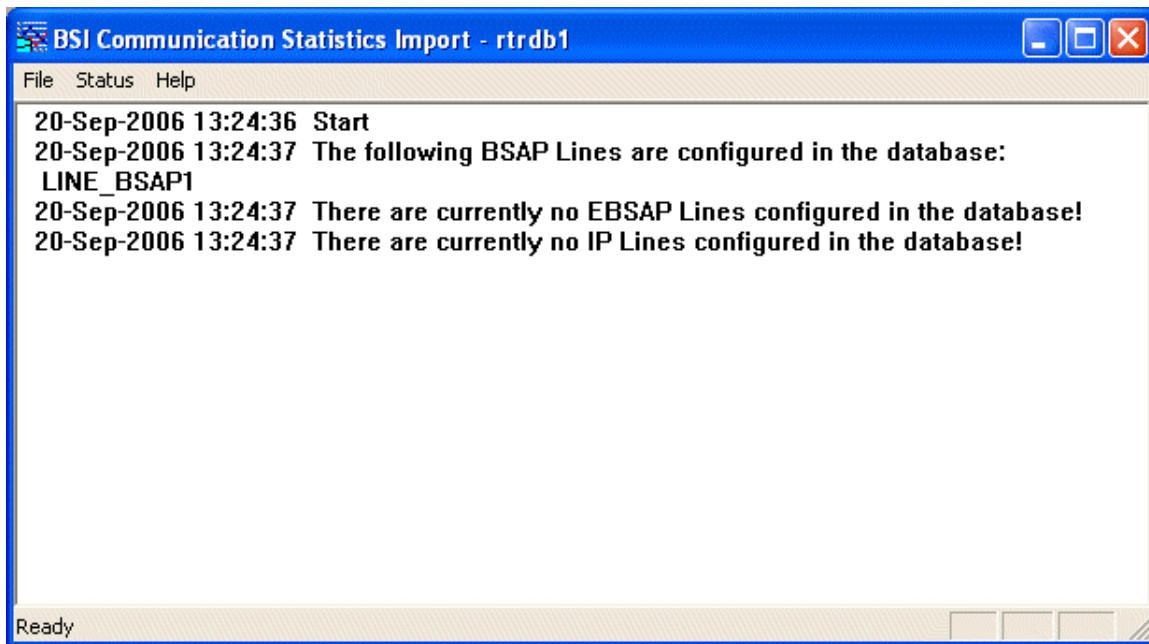
1.2 Command Line Parameters

The following command-line parameters are supported for the BSI Commstats Import component:-

Parameter	Description
s	Service (e.g. -srtrdb1)
u	Username (e.g. -uSYSTEM) This parameter has been included for future use only.
p	Password (e.g. -padminpassword) This parameter has been included for future use only.
d	Debug Level. This value is a bit map. BIT0 – Status Update Messages BIT1 – Progress Update Messages BIT2 – Error Messages BIT3 – Function Messages BIT4 – SQL Output Messages All other bits are ignored. E.g. -d31 will set all debug levels on and dump out all error messages to the SDI window; -d3 equates to BIT0 and BIT1. Not setting the debug parameter disables debugging. As does -d0.

2 BSI Commstats Import Interface

The component's user interface allows the user to enable/disable the monitoring of any line types, define data refresh rates, and configure status messaging in the main Status Pane.



2.1 BSI Commstats Menu Bar

The menu bar has the following three options:-

1. File Menu
2. Status Menu
3. Help Menu



2.1.1 File Menu

The File Menu provides two options:-

1. Configure
2. Exit

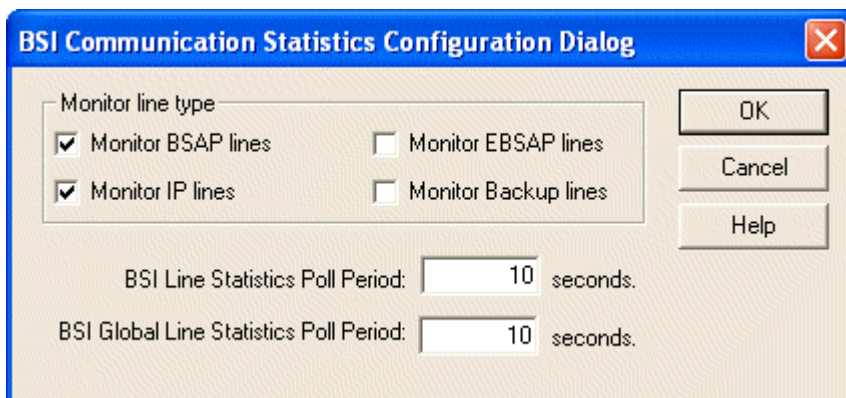


2.1.1.1 Configure

This option opens the BSI Communication Statistics Configuration Dialog.

2.1.1.1.1 Configuration Dialog

The Configuration Dialog enables the user to specify the line types to monitor, and to set Poll Periods.



2.1.1.1.1.1 Monitor BSAP Lines

When checked, monitoring of BSAP lines is enabled.

2.1.1.1.1.2 Monitor IP Lines

When checked, monitoring of IP lines is enabled.

2.1.1.1.1.3 Monitor EBSAP Lines

When checked, monitoring of EBSAP lines is enabled.

2.1.1.1.1.4 Monitor Backup Lines

When checked, monitoring of Backup lines is enabled.

2.1.1.1.1.5 BSI Line Stats Poll Period

The polling period, in seconds after which the BSI Commstats Import component will poll OpenBSI for communication statistics relating specifically to each of the configured lines. This value is set by default to 10 seconds. This value is set by default to 10 seconds. Limits for the Line Stats Polling period are:-

1. Minimum value = 5 seconds
2. Maximum value = 86400 seconds

2.1.1.1.1.6 BSA Line Stats Global Poll Period

The polling period, in seconds after which the BSI Commstats Import component will poll OpenBSI for global communication statistics. This value is set by default to 10 seconds. Limits for the Global Polling period are:-

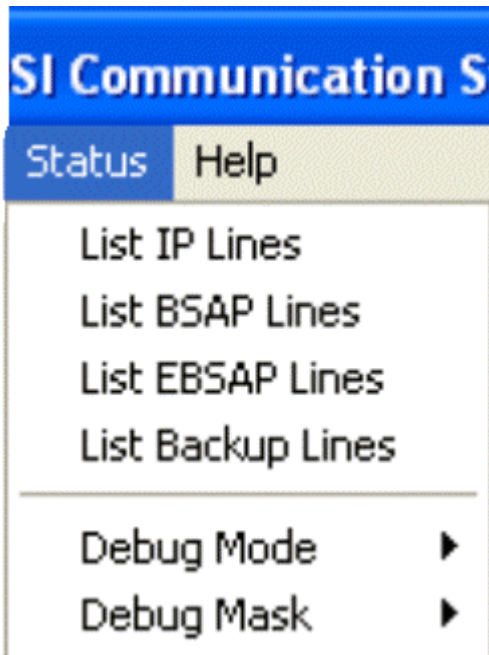
1. Minimum value = 5 seconds
2. Maximum value = 86400 seconds

2.1.1.2 Exit

Closes the BSI Commstats Import application.

2.1.2 Status Menu

The Status menu provides a number of options to regulate the types of messages that appear in the Status Pane. These help when debugging problems found with communication statistics retrieval.



2.1.2.1 List IP Lines

Lists the IP lines that have been configured in OpenBSI. These are automatically inserted into the database when the BSI Commstats Import component first runs.

A message in the Status Pane informs the user if no IP lines are currently configured.

2.1.2.2 List BSAP Lines

Lists the BSAP lines that have been configured in OpenBSI. These are automatically inserted into the database when the BSI Commstats Import component first runs.

A message in the Status Pane informs the user if no BSAP lines are currently configured.

2.1.2.3 List EBSAP Lines

Lists the EBSAP lines that have been configured in OpenBSI. These are automatically inserted into the database when the BSI Commstats Import component first runs.

A message in the Status Pane informs the user if no EBSAP lines are currently configured.

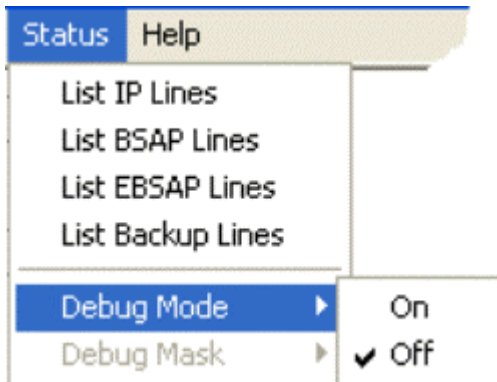
2.1.2.4 List Backup Lines

Lists the Backup lines that have been configured in OpenBSI. These are automatically inserted into the database when the BSI Commstats Import component first runs.

A message in the Status Pane informs the user if no Backup lines are currently configured.

2.1.2.5 Debug Mode

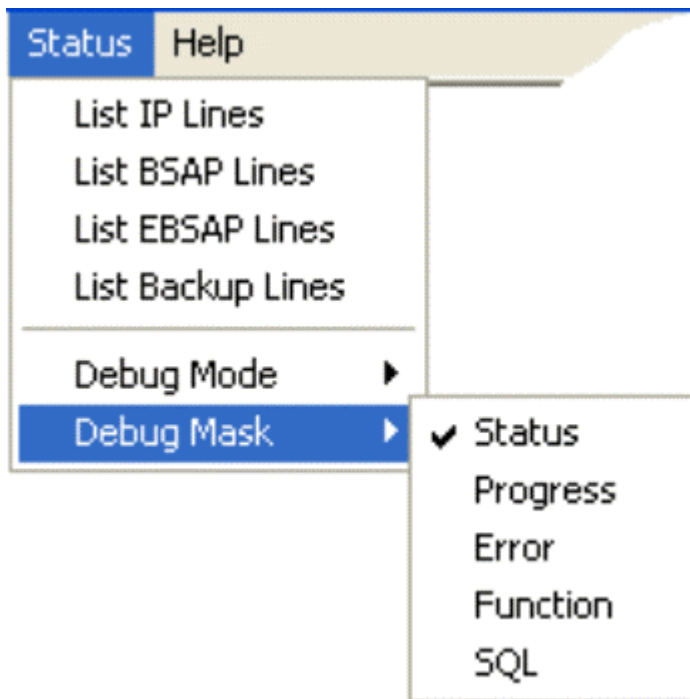
This Menu Group extends to reveal two further options, which are used to toggle Debug mode. By default Debug mode is off. The **Off** option is selected and the **Debug Mask** menu group is disabled:-



When **On** is selected, Debug mode is switched on. The **Debug Mask** option is then enabled, and the options on it's sub-menu can be selected.

2.1.2.6 Debug Mask

The Debug Mask menu group enables the user to define which types of message will appear in the Status Pane.



Status Menu

2.1.2.6.1 Status

When selected, Status messages will be shown in the Status Pane.

2.1.2.6.2 Progress

When selected, the BSI Commstats component will inform the user in the Status Pane when it polls OpenBSI.

2.1.2.6.3 Error

When selected, the BSI Commstats component will write any errors that it encounters to the Status Pane.

2.1.2.6.4 Function

When selected, the BSI Commstats Import component writes any function calls that it makes to the Status Pane.

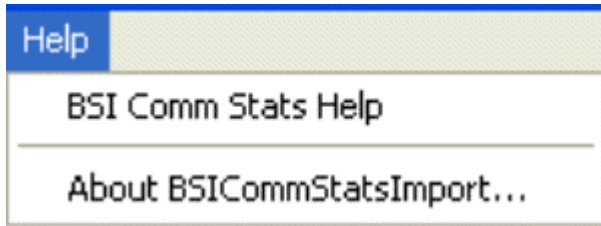
2.1.2.6.5 SQL

When selected, the BSI Commstats Import component writes any SQL updates it makes to the Status Pane.

2.1.3 Help Menu

This menu contains two options:-

1. BSI Commstats Help
2. About BSICommstatsImport...



2.1.3.1 BSI Commstats Help

Opens up this help file.

2.1.3.2 About BSICommstatsImport

Opens the About BSI Communication Statistics Import box, which provides version and build information, as well as support contact details.



2.2 BSI Commstats Status Pane

Timed event messages are written here. The default message type is to provide a Status message when the BSI Commstats component is run, informing the user of what lines are configured in the database.

Other message types can be enabled via the Debug Mode menu.

3 Glossary

API: Application Programming Interface

BSAP: The Bristol Babcock Synchronous/Asynchronous Communication Protocol

Commstats: Communication Statistics

EBSAP: Extended version of the Bristol Babcock Synchronous/Asynchronous Communication Protocol

Reference Guide

D301481X412

April 2012

OpenBSI Commstats Import

GUI: Graphical User Interface

IP: Internet Protocol

OpenBSI: Bristol Babcock's NW3000/ControlWave Suite

4 Index

A

About BSICommstatsImport..... 9

B

Backup Lines..... 7

BSA Line Stats Global Poll Period..... 6

BSAP Lines..... 7

BSI Commstats Command Line Parameters..... 3

BSI Commstats Help..... 9

BSI Commstats Import Interface..... 4

BSI Commstats Import Overview..... 3

BSI Commstats Import Tool..... 3

BSI Commstats Menu Bar..... 4

BSI Commstats Status Pane..... 9

BSI Line Stats Poll Period..... 6

C

Configuration Dialog..... 5

Configure..... 5

D

Debug Mask..... 7

Debug Mode..... 7

E

EBSAP Lines..... 7

Error..... 8

Exit..... 6

F

Function..... 8

H

Help Menu..... 8

I

Ip Lines..... 6

M

Monitor Backup Lines..... 6

Monitor BSAP Lines..... 5

Monitor EBSAP Lines..... 5

Monitor IP Lines..... 5

P

Progress..... 8

R

Running..... 3

S

SQL..... 8

Status..... 8

Status Menu..... 6

Reference Guide

D301481X412

April 2012

DISCLAIMER

Bristol, Inc., Bristol Babcock Ltd, Bristol Canada, BBI SA de CV and the Flow Computer Division, are wholly owned subsidiaries of Emerson Electric Co. doing business as Remote Automation Solutions ("RAS"), a division of Emerson Process Management. ROC, FloBoss, ROCLINK, Bristol, Bristol Babcock, ControlWave, TeleFlow and Helicoid are trademarks of RAS. AMS, PlantWeb and the PlantWeb logo are marks of Emerson Electric Co. The Emerson logo is a trademark and service mark of the Emerson Electric Co. All other marks are property of their respective owners.

The contents of this publication are presented for informational purposes only. While every effort has been made to ensure informational accuracy, they are not to be construed as warranties or guarantees, express or implied, regarding the products or services described herein or their use or applicability. RAS reserves the right to modify or improve the designs or specifications of such products at any time without notice. All sales are governed by RAS' terms and conditions which are available upon request. RAS does not assume responsibility for the selection, use or maintenance of any product. Responsibility for proper selection, use and maintenance of any RAS product remains solely with the purchaser and end-user.

Engineered and supported by:

Remote Automation Solutions,

Blackpole Road, Worcester, WR3 8YB, UK

Registered office: Meridian East, Leicester, LE19 1UX

Registered in England and Wales, Registration No. 00671801

VAT Reg No. GB 705 353 652

Emerson Process Management
Remote Automation Solutions
1100 Buckingham St
Watertown, CT 06795
T 1 (860) 945 2200
F 1 (860) 945 2278
www.EmersonProcess.com/Remote
binfo@EmersonProcess.com

Emerson Process Management
Remote Automation Solutions
Blackpole Road
Worcester, WR3 8YB
T 44 (0) 1905 856848
F 44 (0) 1905 856930
www.EmersonProcess.com/Remote
oedsupport@EmersonProcess.com

