

Reference Guide

D301523X412

APRIL 2012

OpenEnterprise Printer Control Reference Guide (V2.83)

Remote Automation Solutions

Website: www.EmersonProcess.com/Remote



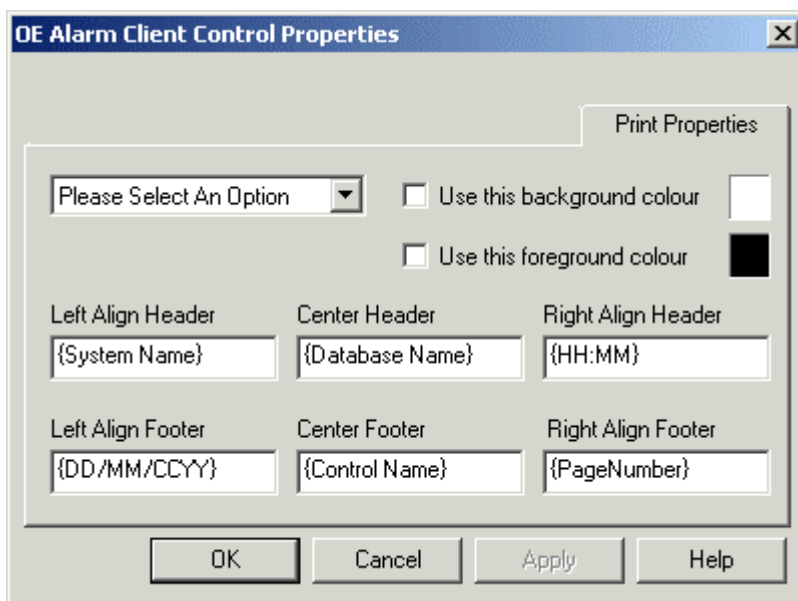
Contents

1	Printer Component	1
1.1	The Print Properties Page.....	1
1.2	Header or Footer Selection List	1
1.3	Change Print Color.....	2
1.4	Header or Footer Text Box	2
2	Index	3

1 Printer Component

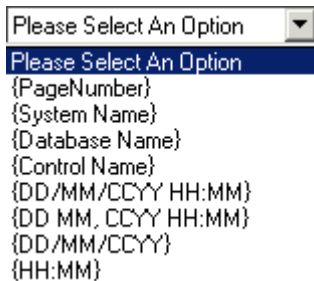
1.1 The Print Properties Page

The Print Properties page is common to five of the OpenEnterprise Viewers. It enables you to configure Headers and Footers and Foreground/Background colours that will be used when the View is printed using the **Print** context menu from the View component within the OEDesktop. Note that the **Print** context menu is not available for the OEGraphics View. To print OEGraphics displays from the OEDesktop it is recommended to use the **File->Print** menu option from the OEDesktop's menu bar.



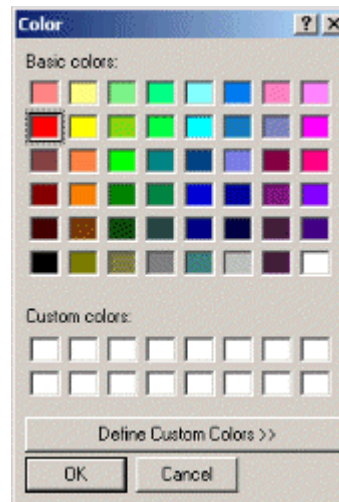
1.2 Header or Footer Selection List

This list displays the possible options for printing in any Header or Footer position. When an option is selected it is copied into the selected Header/Footer text field.



1.3 Change Print Color

Default Text and Background colors for printing are Black text and White background, but these may be changed. The "Use this background/foreground color" boxes must be checked. Then when the adjacent color boxes are double clicked the the color selection box is displayed for selection of a new color.



1.4 Header or Footer Text Box

These text boxes represent the positional placement of the Header and Footer when the View is printed. Place the cursor in the desired box and make a selection from the Header or Footer selection list.

The selected option will be pasted into the Header or Footer field selected from this dialog. It will appear on the printed page in the position stated above the field (i.e Center Header etc.).

2 Index

C

Change Print Color..... 4

F

Footer Selection List 3

Footer Text Box 4

H

Header 3, 4

Reference Guide

D301523X412

APRIL 2012

DISCLAIMER

Bristol, Inc., Bristol Babcock Ltd, Bristol Canada, BBI SA de CV and the Flow Computer Division, are wholly owned subsidiaries of Emerson Electric Co. doing business as Remote Automation Solutions ("RAS"), a division of Emerson Process Management. ROC, FloBoss, ROCLINK, Bristol, Bristol Babcock, ControlWave, TeleFlow and Helicoid are trademarks of RAS. AMS, PlantWeb and the PlantWeb logo are marks of Emerson Electric Co. The Emerson logo is a trademark and service mark of the Emerson Electric Co. All other marks are property of their respective owners.

The contents of this publication are presented for informational purposes only. While every effort has been made to ensure informational accuracy, they are not to be construed as warranties or guarantees, express or implied, regarding the products or services described herein or their use or applicability. RAS reserves the right to modify or improve the designs or specifications of such products at any time without notice. All sales are governed by RAS' terms and conditions which are available upon request. RAS does not assume responsibility for the selection, use or maintenance of any product. Responsibility for proper selection, use and maintenance of any RAS product remains solely with the purchaser and end-user.

Engineered and supported by:

Remote Automation Solutions,

Blackpole Road, Worcester, WR3 8YB, UK

Registered office: Meridian East, Leicester, LE19 1UX

Registered in England and Wales, Registration No. 00671801

VAT Reg No. GB 705 353 652

Emerson Process Management
Remote Automation Solutions
1100 Buckingham St
Watertown, CT 06795
T 1 (860) 945 2200
F 1 (860) 945 2278
www.EmersonProcess.com/Remote
binfo@EmersonProcess.com

Emerson Process Management
Remote Automation Solutions
Blackpole Road
Worcester, WR3 8YB
T 44 (0) 1905 856848
F 44 (0) 1905 856930
www.EmersonProcess.com/Remote
oedsupport@EmersonProcess.com

