

Reference Guide

D301541X412

April 2012

OpenEnterprise Time Server Reference Guide (V2.83)

Remote Automation Solutions

Website: www.EmersonProcess.com/Remote




Contents

1	Time Server	1
1.1	Pre-Starting Server Components.....	1
1.2	Timeserver COM Configuration	1
1.3	Client-Server Application Architecture	2
1.4	User Interface.....	2
1.4.1	File Menu	3
1.4.2	Edit Menu.....	3
1.4.3	View Menu	3
1.4.4	Help Menu	3
1.4.5	Toolbar.....	3
1.4.6	Database	3
1.4.7	Connected	3
1.4.8	Time Zone.....	3
1.4.9	Available Time Zones	3
1.4.10	DST Offsets.....	4
1.5	Properties Dialog.....	4
1.5.1	Show System Tray Icon.....	4
1.5.2	Show Window.....	4
1.5.3	Minimized.....	4
1.5.4	Hide on Minimize	4
1.5.5	OK Button	4
1.5.6	Cancel Button	5
2	Index	6

1 Time Server

The Time Server is a software component that ensures that date-time data requested by any of the workstation resident OpenEnterprise Views is converted to local time before it is displayed to the user. The Time Server 'serves' local time, including time-zone and DST adjustments to OpenEnterprise View components because the OpenEnterprise database is always set to run in GMT.

Like all of the Client Server components, the Time Server has its own User Interface (UI), which enables the user to specify and view the databases to which is connected, and control the way the UI behaves. When it is running, its icon is visible in the System Tray at the bottom right of the Windows Desktop - . To display the UI, double click on this icon in the System Tray.

1.1 Pre-Starting Server Components

When the user logs into the OpenEnterprise database, the Time Server is started automatically.

This is normal Server component operation. Server components are started automatically as a background process when a Client component starts up, and close when the Client closes. However, this can cause problems when Client components are being opened and closed rapidly. It is therefore recommended that certain Server components be started before any Client components begin requesting data from them. Obviously, if a Client component is not required, then the Server component is not required. The following are the Server components that should be started on an OpenEnterprise workstation before any of their 'Clients' begin running: -

- The Bristol OPC Server (Clients = Graphics and Trend View)
- The Bristol HDA Server (Client = Trend View)
- The Alarm Client Server (Client = Alarm View)
- The Notes Server (Client = Notes View)

These components reside in the OpenEnterprise bin directory (by default *C:\Program Files\Bristol\OpenEnterprise\bin*). They are executables, and may be started in any of the ways that an executable file is started (e.g. double clicking, batch file, Startup menu).

1.2 Timeserver COM Configuration

If an OpenEnterprise Session is configured as a Windows Service, the Timeserver may need to have its COM settings modified. This is to avoid Timeserver problems when starting a new Session Task whilst the Session is already up and running.

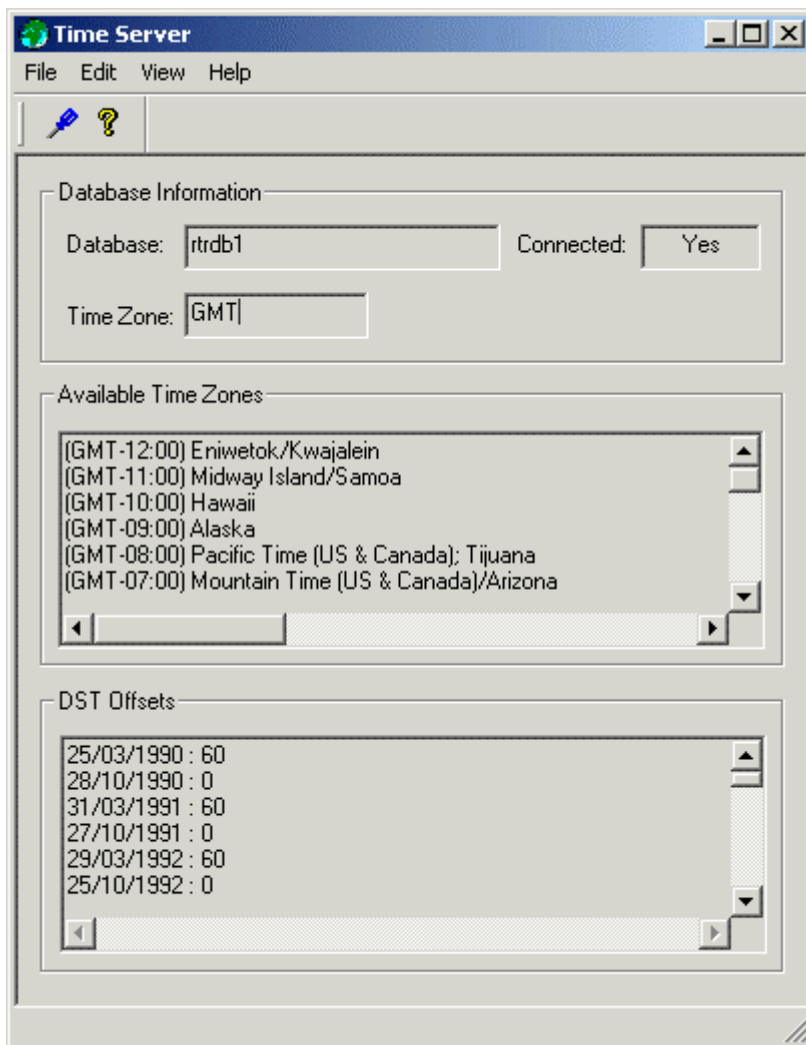
To do this in Windows XP Click **Start->Run** and type **dcomcnfg** into the **Open** text field. Next, select Component Services from the tree control in the left hand pane. There may then be a delay while the required information is obtained, but once control is returned select **Computers->My Computer->DCOM Config**. A list of the registered COM components on the machine will then be displayed in the right hand list control. Find the entry for the OETimeServer, select it and use the right mouse button to invoke a context menu, from which the properties menu item should be selected. In the resultant dialog select the identity property page, and within this page select the interactive user radio button. Press OK and exit from the application. The PC will then need to be rebooted.

1.3 Client-Server Application Architecture

Most OpenEnterprise View components (e.g. Alarm View, Alarm Printer View, Trend View, OEGraphics View, Notes View) have what is known as three-tier Client-Server architecture. Each of the components listed above is a Client, which uses one or more Server components to provide them with the data that they request (all Clients use the Time Server). This data is then displayed by the Client to the user. In turn, the Server component requests the data from what is usually a remote OpenEnterprise data source (Database Management System) running on an OpenEnterprise server. The Server component, is therefore a direct client of the OpenEnterprise database, but a Server of the OpenEnterprise View component (hence the term "three-tier"). Both Client and Server components must run on the same workstation, but the database usually runs on another machine.

1.4 User Interface

The Time Server's Main Dialog provides date-time information for the OpenEnterprise application, and also allows the user to configure aspects of the User Interface.



Time Server Overview

1.4.1 File Menu

The File Menu provides an option to Exit the application. This will cause the Time Server User Interface to hide itself, but it will remain running as a process. The UI can be invoked again by double clicking on its icon in the System Tray.

1.4.2 Edit Menu

The Edit Menu provides an option to open the Properties dialog, which enables the user to configure the UI behaviour.

1.4.3 View Menu

There are two options available from this menu: -



1. **Toolbar** - when checked, the toolbar is visible under the Menu bar.
2. **Status Bar** - when checked, the Status Bar is visible at the bottom of the Main Dialog window. It displays information on the current status of the Alarm Printer Server.

1.4.4 Help Menu

This provides an option to open the About dialog, which provides information on the version and build of OpenEnterprise being used and contact information.

1.4.5 Toolbar

This contains two icons: -

- Properties icon  - selection opens the Time Server Properties dialog.
- About icon  - selection opens the About dialog, which provides information on the version and build of OpenEnterprise being used and contact information.

1.4.6 Database

Displays the name of the OpenEnterprise database to which a connection has been made. This value is taken from user instructions when OpenEnterprise Workstation is installed.

It resides in a value called *Database* on the *OpenEnterprise\Tasks\TimeServer* key in the OpenEnterprise Settings file. This file can be viewed using the OpenEnterprise Settings Editor.

1.4.7 Connected

Tells whether the Time Server is connected to the database displayed in the Database field.

1.4.8 Time Zone

Displays the timezone of the OpenEnterprise application. This is set up when the OpenEnterprise database is built. For further instructions on this process see the Time Zones and DST Help file.

1.4.9 Available Time Zones

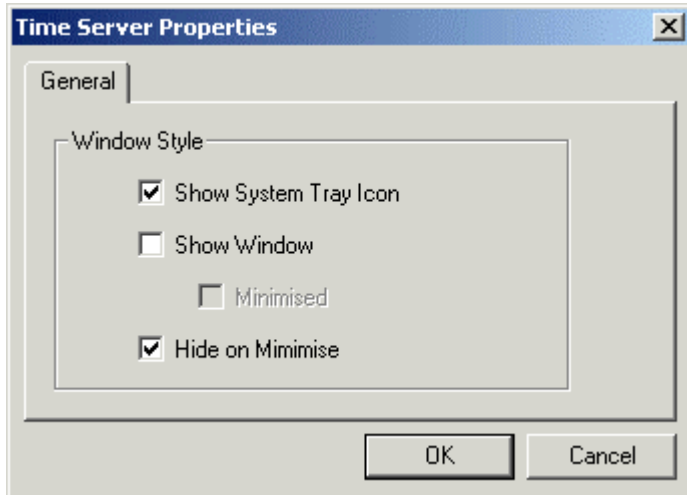
This list displays the Time Zones that are available for OpenEnterprise applications. Time Zones for the Clients (Views) not in the GMT timezone must be set on the *Time Zone* tab of the respective View's property pages.

1.4.10 DST Offsets


This list displays the DST offset dates. This information is contained in the DSTInformation table, and must be entered (usually as an SQL script file) when the database is built. See the Time Zones and DST Help file for more details.

1.5 Properties Dialog

The Properties dialog enables the user to configure settings for the Time Server's User Interface.



1.5.1 Show System Tray Icon

When checked, the Time Server icon -  will be displayed in the System Tray when it is running. Double clicking on this icon in the System Tray will open the Time Server's User Interface.

1.5.2 Show Window

When checked, the Time Server's User Interface will be displayed on startup.

1.5.3 Minimized

When the *Show Window* box is checked, this option becomes enabled. If checked, on startup the Time Server's User Interface will be displayed as a minimized icon on the Windows Task Bar.

1.5.4 Hide on Minimize

If checked, when the Time Server's User Interface is minimized, it will also be hidden. If the *Show System Tray Icon* box and *ShowWindow* boxes are unchecked at the same time that this box is checked, then at startup the Time Server's User Interface will not be available.

The interface may be restored by using the Settings Editor to manually change the *ShowtrayIcon* value on the *OpenEnterprise\Tasks\TimeServer* key to 1. A restart will be necessary before the change takes effect.

1.5.5 OK Button

When this button is selected, changes made to any tab are saved, and the Property dialog is closed. The changes will not be implemented until the next restart of the Time Server.

1.5.6 Cancel Button

When this button is selected, the Property dialog is closed without saving any changes already made on the dialog.

2 Index

A

Available Time Zones..... 5

C

Cancel Button..... 6

Client-Server Application Architecture 4

Connection 5

D

Database..... 5

DST Offsets..... 5

E

Edit Menu 5

H

Help Menu..... 5

Hide on Minimize..... 6

M

Main Dialog 4

Minimized..... 6

O

OK Button 6

P

Pre-Starting Server Components..... 3

Properties Dialog 5

S

Show System Tray Icon..... 6

Show Window 6

T

Time Server Overview 3

Time Zone..... 5

V

View Menu 5

Reference Guide

D301541X412

APRIL 2012

DISCLAIMER

Bristol, Inc., Bristol Babcock Ltd, Bristol Canada, BBI SA de CV and the Flow Computer Division, are wholly owned subsidiaries of Emerson Electric Co. doing business as Remote Automation Solutions ("RAS"), a division of Emerson Process Management. ROC, FloBoss, ROCLINK, Bristol, Bristol Babcock, ControlWave, TeleFlow and Helicoid are trademarks of RAS. AMS, PlantWeb and the PlantWeb logo are marks of Emerson Electric Co. The Emerson logo is a trademark and service mark of the Emerson Electric Co. All other marks are property of their respective owners.

The contents of this publication are presented for informational purposes only. While every effort has been made to ensure informational accuracy, they are not to be construed as warranties or guarantees, express or implied, regarding the products or services described herein or their use or applicability. RAS reserves the right to modify or improve the designs or specifications of such products at any time without notice. All sales are governed by RAS' terms and conditions which are available upon request. RAS does not assume responsibility for the selection, use or maintenance of any product. Responsibility for proper selection, use and maintenance of any RAS product remains solely with the purchaser and end-user.

Engineered and supported by:

Remote Automation Solutions,

Blackpole Road, Worcester, WR3 8YB, UK

Registered office: Meridian East, Leicester, LE19 1UX

Registered in England and Wales, Registration No. 00671801

VAT Reg No. GB 705 353 652

Emerson Process Management
Remote Automation Solutions
1100 Buckingham St
Watertown, CT 06795
T 1 (860) 945 2200
F 1 (860) 945 2278
www.EmersonProcess.com/Remote
binfo@EmersonProcess.com

Emerson Process Management
Remote Automation Solutions
Blackpole Road
Worcester, WR3 8YB
T 44 (0) 1905 856848
F 44 (0) 1905 856930
www.EmersonProcess.com/Remote
oedsupport@EmersonProcess.com

