

Notes:

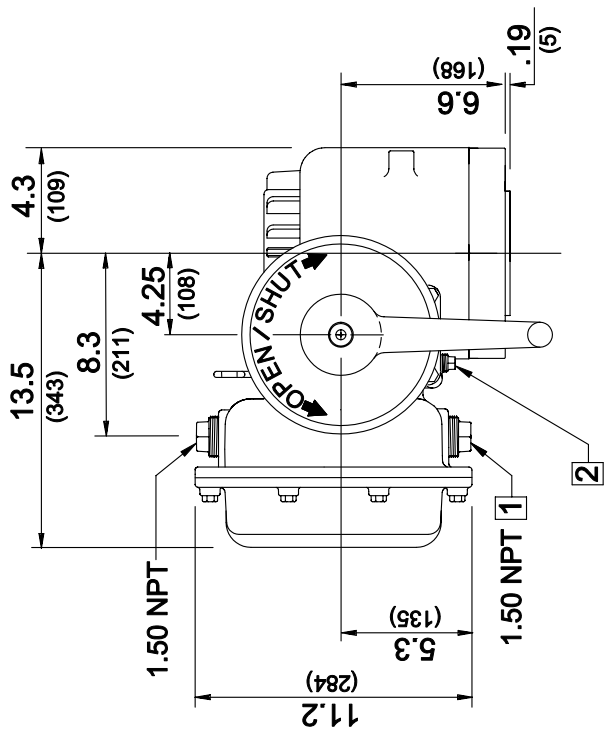
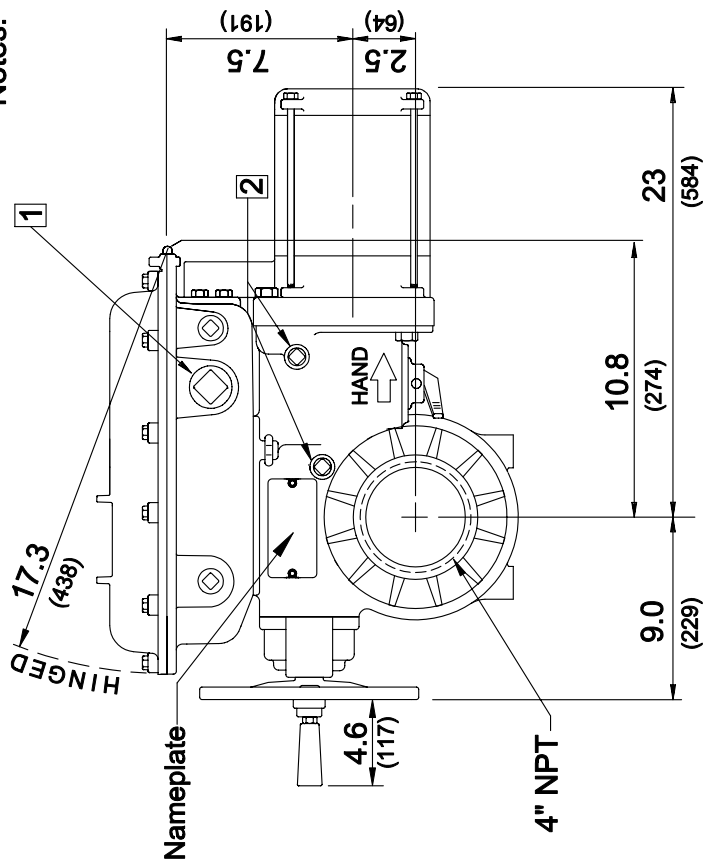
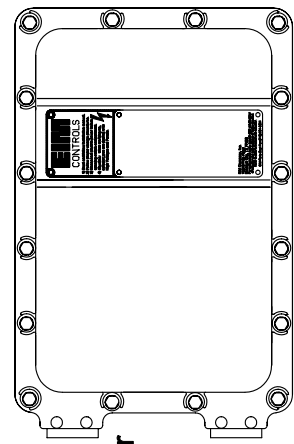
- 1.50-11.5 NPT (2 places) is preferred wire entry. **CAUTION** Conduit must enter at lowest point to prevent water from entering electrical enclosure due to condensation. If hazardous (classified) or Nema 6 location, conduit seals are required at electrical enclosure entrances.

- Lubrication 0.50-14 NPT plugs.

- For electrical control pilot device elements mounted on actuator control cover, see EIM job spec sheet & wiring diagram furnished for each specific job no.

- For electrical control pilot device elements mounted on actuator control cover, see EIM job spec sheet & wiring diagram furnished for each specific job no.

- WARNING** - The installation and servicing instructions are for use by qualified personnel only. To avoid injury and electric shock, do not perform any service on EIM equipment unless qualified



INCHES .XXX ± .005"
(MILLIMETERS) .XX ± .020"
.X APPROX.

EIM COMPANY, INC.
13840 PIKE ROAD
CONTROLS MISSOURI CITY, TX 77489

Type S M/T 6.50

OUTLINE NO. **S-0001/16G B**

REV	DATE	ERO	BY
B	8/2/01	14532	/CML