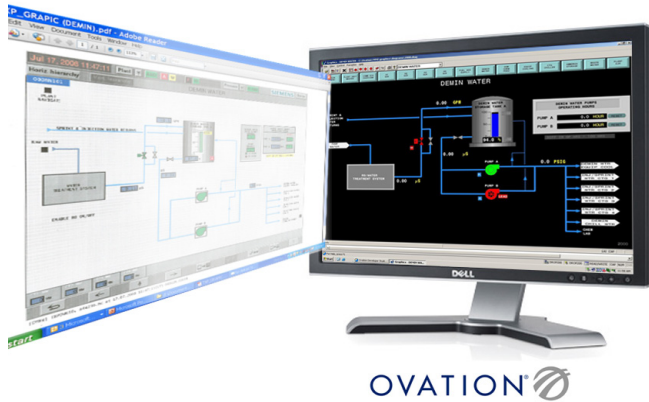


# Ovation® Expert Transition

for Siemens Teleperm XP (TXP) Control Systems



## Transition to Better Controls

Today's competitive business environment requires optimal performance not only from your power plant generation equipment, but also from your operations and maintenance personnel. Are you currently experiencing any of the following Teleperm XP control system issues that may be prohibiting your plant from optimal operations?

- Poor performance and reliability
- Multiple systems for a single power block
- Limited system-to-system communication
- Inadequate product service and support
- High support costs from outdated technology
- Considering TXP replacement after only 3-5 years in service

If yes, then you need a supplier with vast power industry expertise that can provide performance-enhancing technology combined with comprehensive support to optimize your plant operations.

**That supplier is Emerson.**

For more information:  
[www.emersonprocess-powerwater.com](http://www.emersonprocess-powerwater.com)



## Use Today's Technology While Preserving Yesterday's Investments

Transition your Teleperm XP control systems to proven Ovation technology for enhanced turbine operations. Emerson migration programs have been proven to reduce project costs and improve plant operations in hundreds of installations on various control system platforms, even those from other vendors.

Key to our transition strategy is an integrated Ovation Profibus® DP I/O module that interfaces directly to the Profibus DP communication network used in the Teleperm XP system to connect with the ET200M I/O. Our solution provides your operators complete control and monitoring capabilities from a single Ovation system, without starting over. Your transition choices include retaining your existing I/O, terminations, and field wiring, migrating your entire legacy TXP system to Ovation for a complete technology upgrade, or a combination of retaining existing items while adding new components.

Emerson's transition program includes a total replacement of the embedded Teleperm XP SIMADYN system with native Ovation turbine I/O modules, enabling quicker response times and tighter controls. Our turbine I/O was designed specifically to handle unique control requirements such as turbine speed pickups, fast closed-loop positioning of major servo-operated valves, and interfacing to electro-hydraulic servo valve actuators.

Use of fully-redundant Profibus interface modules in the local I/O bus and high-speed Ovation Controllers, with proven logic such as 2-out-of-3 testable manifolds, assures the highest level of reliability, performance, and safety for your demanding gas and steam turbine operations.

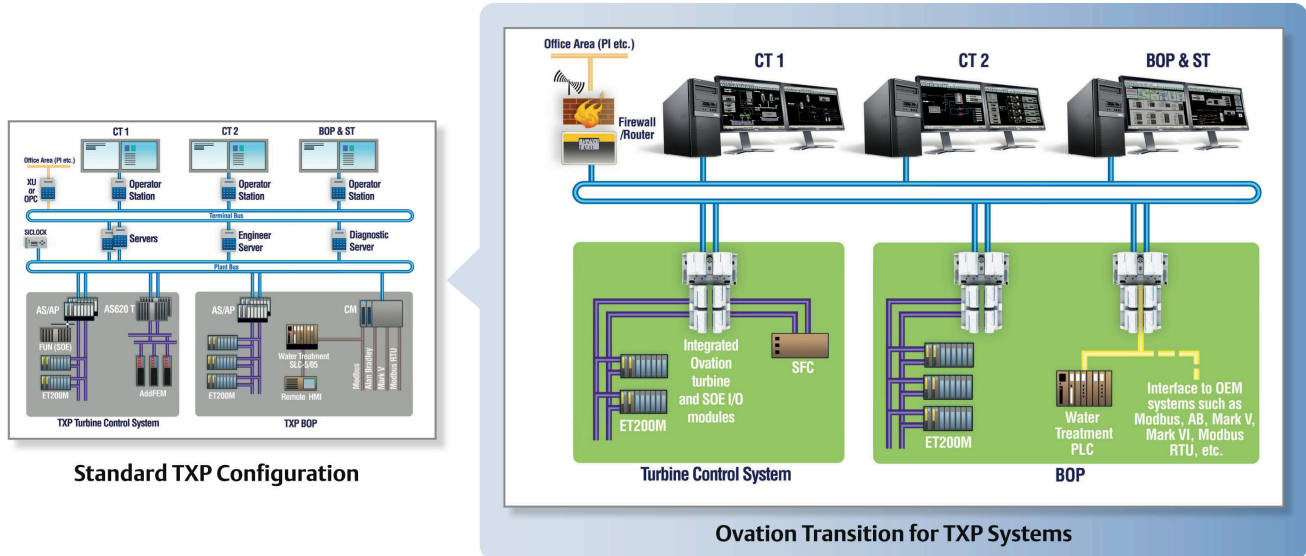
### The Emerson solution:

- Retains your existing ET200M I/O where appropriate
- Reuses existing terminations and associated wiring
- Replaces the entire TXP SIMADYN sub-system with fully integrated Ovation Turbine I/O modules
- Includes full support for turbine OEM control-related Product Modifications (Prod Mods)
- Provides configuration management of ET200M I/O from Ovation engineering tools



“Great service, teamwork, and cooperation are the benchmarks of your organization, but I believe that the Emerson team at Dunkirk exceeded even those expectations on a daily basis.”

— **Bill Vogel**, *Instrumentation & Controls Supervisor, Dunkirk Power Plant, NRG*



## Benefits of Emerson’s Solution

- **Improves turbine control** through the use of integrated valve positioner and servo control I/O modules, as well as a high-speed interface capability to magnetic speed pickups and servo valve actuator coils
- **Decreases probability of failure** based on an Ovation architecture that uses fewer standard components, such as controllers and I/O modules
- **Provides a fast, low-risk, and economical** transition to best-in-class technology through faster I/O update frequencies, a simple conversion process, straightforward system expansion, and no need for additional equipment powering
- **Reduces maintenance costs** by incorporating industry standard components as opposed to the OEM’s proprietary structure
- **Designed for power** to meet the unique needs of the electric generation industry in contrast to other OEM solutions that were created for other industries and adapted for power
- **State-of-the-art governor controls** through total replacement of the embedded TXP SIMADYN system with native Ovation turbine I/O modules, enabling quicker response times and tighter controls
- **Superior service** from any of Emerson’s knowledgeable application or field service engineers versus a few specialized personnel that are only able to work on specific portions of the system

## The Emerson Advantage

- **Low-risk, U.S.-based Provider** - Emerson, headquartered in St. Louis, Missouri, is a recognized leader with a foundation of business excellence, a long history of financial stability, and award-winning brands such as PlantWeb®, Ovation, Fisher, and Rosemount.
- **Power Generation Focused** - With more than 40 years of proven experience, the Power & Water Solutions division is Emerson’s designated Center of Excellence for the power generation industry. We specialize in total plant control systems and applications for boilers, HRSGs, steam and gas turbines, balance of plant, optimization, simulation, and consulting services.
- **Ovation – Designed for Power Generation** - Specifically designed to optimize the power generation industry, one Ovation system offers a unified control platform for all your power plant requirements, providing your personnel with consistent and simplified operations and maintenance.
- **Committed OEM Implementation Support** - The alliance of Emerson and Mitsubishi Power Systems provides an alternative to OEM services, including control systems, mechanical services, spare parts, and engineered turbine modifications.
- **High Customer Satisfaction** - A recent independent survey placed Emerson’s customer satisfaction at better than 97%. Emerson has been singled out for consistently helping our customers to achieve superior operational efficiencies.

© 2009 Emerson Process Management Power & Water Solutions, Inc.

The Emerson logo is a trademark and service mark of Emerson Electric Co., Ovation is a mark of Emerson Process Management. All other marks are property to their respective owners.

PWS\_003096 Rev. 3

