



Bettis Canada Ltd.  
 4112 91A Street  
 Edmonton, Alberta, Canada T6E 5V2  
 Tel: (403) 450-3600  
 Fax: (403) 450-1400

Edmonton

# SERVICE MANUAL No. I-0019

## SELF CONTAINED HYDRAULIC ACTUATOR

CUSTOMER: \_\_\_\_\_

P.O.#: \_\_\_\_\_

W.O.#: \_\_\_\_\_

TAG: \_\_\_\_\_

DATE: \_\_\_\_\_

APPLIES TO OPERATOR MODEL: \_\_\_\_\_

|     | <u>DESCRIPTION</u>                                  | <u>DWG.NO</u>   | <u>PAGE</u> |
|-----|---|-----------------|-------------|
|     | INTRODUCTION .....                                  | C-0251 .....    | 2           |
| I   | INSTALLATION AND OPERATION .....                    |                 | 3           |
| II  | SPECIFICATIONS .....                                |                 | 5           |
|     | RESET VALVE .....                                   | C-0069 .....    | 6           |
|     | HANDPUMP .....                                      | AB0188 .....    | 7           |
|     | REGULATOR PARTS LIST .....                          |                 | 8           |
| III | PRESSUREMATIC .....                                 |                 | 10          |
|     | PRESSUREMATIC ASSEMBLY .....                        | APB0570 .....   | 11          |
|     | PRESSUREGUARD ASSEMBLY .....                        | CB0065-10 ..... | 12          |
|     | PRESSUREGUARD ASSEMBLY AND DIMENSIONAL .....        | CB0065-00 ..... | 13          |
|     | TYPICAL GVO-HP-FS CLOSE COUPLED ASSEMBLY .....      | CB0210 .....    | 14          |
|     | TYPICAL GVO-HP-FS-UM ASSEMBLY .....                 | AB0444-10 ..... | 15          |
|     | TYPICAL QUARTERTURN HYDRAULIC SERIES ASSEMBLY ..... | AB0520 .....    | 16          |
| IV  | NOTES .....   |                 | 17          |

# SELF CONTAINED HYDRAULIC MODULE

The compact Bettis Self Contained Hydraulic Module is designed to offer reliable emergency shutdown capability, using clean hydraulic fluid, when an external power source is either not available or not reliable.

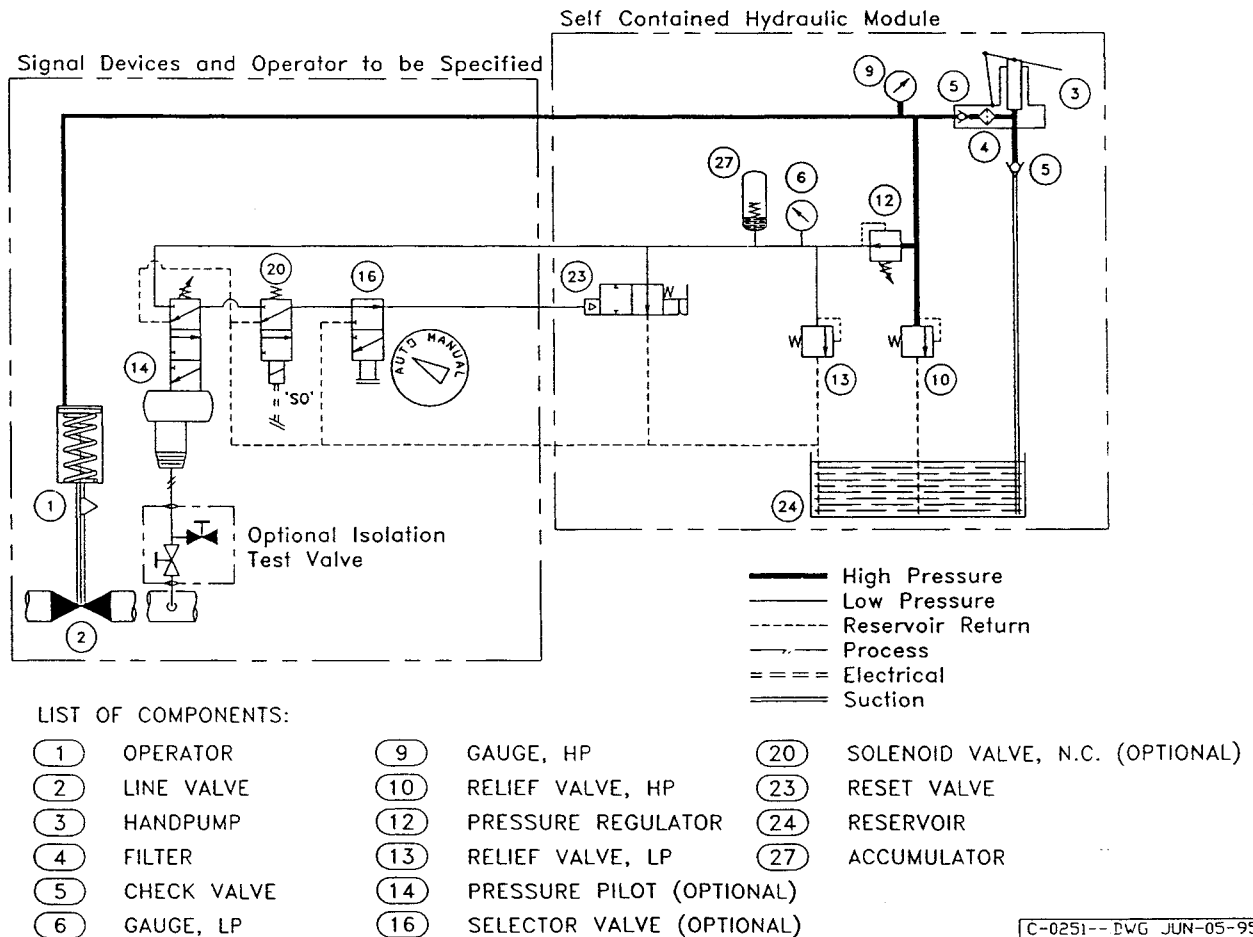
The module is used in conjunction with Bettis linear or rotary spring return hydraulic operators to provide a fail safe system adaptable to ball, plug and other quarter turn valves as well as reverse acting gate and other linear operated valves.

The module has built-in temperature compensation and pressure relief and is proven reliable under the most demanding operating and environmental conditions.

The module is the foundation for a flexible system, and the example below, while not typical, does illustrate the operating method and a variety of available sensing and control options.

## Operation:

- Shown with line valve closed, reset valve unlatched
- Latch reset valve (23), then operate handpump (3) to open line valve (2)
- System enters automatic mode when pilot (14) senses pressure within setpoints and solenoid (20) is energized
- Line valve closes if:
  - i) Reset valve (23) is switched manually, or
  - ii) Pilot (14) senses pressure out of range, or
  - iii) Selector valve (16) is switched to "MANUAL", or
  - iv) Solenoid (20) is de-energized



# I INSTALLATION

Refer to schematic drawing C-0251.

The self contained hydraulic esd module is usually factory installed on the operator, but can be field installed by the user.

The module type may be :

- a) low pressure MAWP 200 psi.
- b) high pressure MAWP 1500 psi.

It is mounted on the operator with bracket(s) and mounting bolts.

Identified on manifold assembly :

- (H) High pressure hydraulic supply to the operator
- (L) Low pressure hydraulic supply for monitoring/devices
- (S) Low pressure hydraulic signal for RESET VALVE from monitoring/ESD devices
- (V) Vent or return line to allow off panel devices to return oil to the reservoir

Connections are as shown on the schematic, and also tagged at the factory. Solenoid valve(s), if applicable, have been factory installed and tubed, ready for electrical connections. The breather/fill port of the reservoir may be plugged with a metal or plastic plug, if so remove and replace with breather provided in bag attached to the unit.

An aviation grade hydraulic fluid (ESSO UNIVIS or EQUIVALENT) is used in all BETTIS operator systems, or per customer request.

## OPERATION

### a) MANUAL MODE (TO START-UP/ RESET)

1. Lift the toggle on the manual pilot valve and latch in the up position. Refer to drawing C-0069 for "Manual Reset" position.
2. Operate handpump to open/close line and pressurize system.
3. Stop pumping when high pressure gauge reading is approximately 10% above the minimum value required to hold line valve in position.
4. At this point, hydraulic pressure opposing the operator spring holds the line valve in position.

NOTE: To start-up without complete system connections PLUG (L) LOW PRESSURE to prevent fluid flow off the panel. Follow instructions above to operate unit.

### b) AUTOMATIC MODE (TO RUN)

1. Lower the toggle on the manual pilot valve. Refer to drawing C-0069 for "Auto/Run" position.
2. Automatic mode is attained when signal device(s) is satisfied. Solenoid valve(s) is returned to normal operating condition (ie. energized, de-energized).

## SHUTDOWN

- a) **Signal devices:** If the pilot senses pressure outside of the setpoints; or if there is an applied/removed electrical signal to solenoid; it removes the signal to the manual pilot valve. This manual pilot valve switches, which allows the spring in the operator to stroke the line valve to the failsafe position.
- b) **Manual shutdown:** Push toggle to shutdown manually.

## MAINTENANCE

NOTE: Regular maintenance should be performed each autumn or as required.

1. Drain any accumulated moisture from fluid reservoir.
2. Check, clean and/or replace filter element(s).
3. Check pressure relief valve(s) setpoints and reset values.
4. If possible check operation and calibration of pressure pilot/solenoid.
5. Top up hydraulic fluid with compatible fluid.

## TROUBLE SHOOTING

NOTE: As shown in the schematic, high pressure side of the system supplies the low pressure regulated side, therefore any leakage on the low side will cause significant changes in high pressure gauge values in a short time period.

Without cycling the unit, but with the pressurized removal of the reservoir and off panel device, vent/return lines will assist in tracing leakage. To accomplish this:

1. Remove vent line from pilot/solenoid vent port. This isolates it from the SCH module and allows for observation of any oil leakage through the device

NOTE: This checks poppet/spool and spool/sleeve o-ring seal in operating positions.

2. Remove reservoir from module to observe components (reliefs and reset valve) for oil leakage while under normal operating pressures.
3. Remove filter plug, spring, and filter in handpump subplate to observe backside of HP discharge. Check for leakage across and around it with high pressure being applied.
4. Remove fitting and tubing or plug from module second vent port to observe any oil leakage due to manifold porosity between LP channel and VENT channel.
5. Remove operator inspection cover/plate and or tubing from cylinder plate port to observe any oil leakage across piston seal and piston centre o-ring.

In the case of pumping problems, access to pump suction valve is gained by removing pump assembly from subplate. Pumping difficulties usually result from dirty filter element, contaminated oil (water, methanol), or incorrect fluid type.

Failure of the regulator to regulate is noticeable in that after two pump strokes low pressure gauge reading is 130 PSI. Service regulator according to enclosed bulletin.

NOTE: Depressurize system before removing/disassembling any components on the manifold.

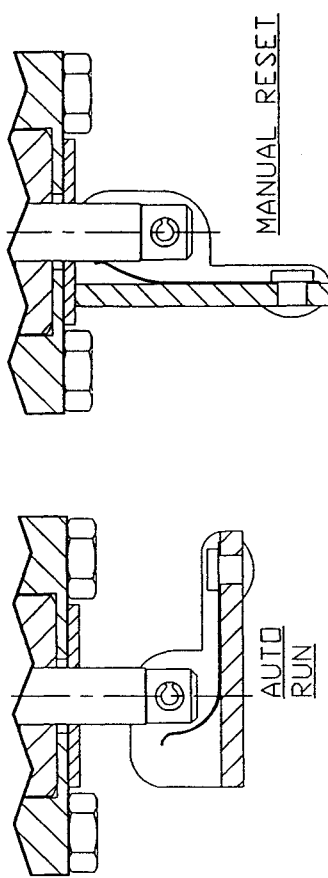
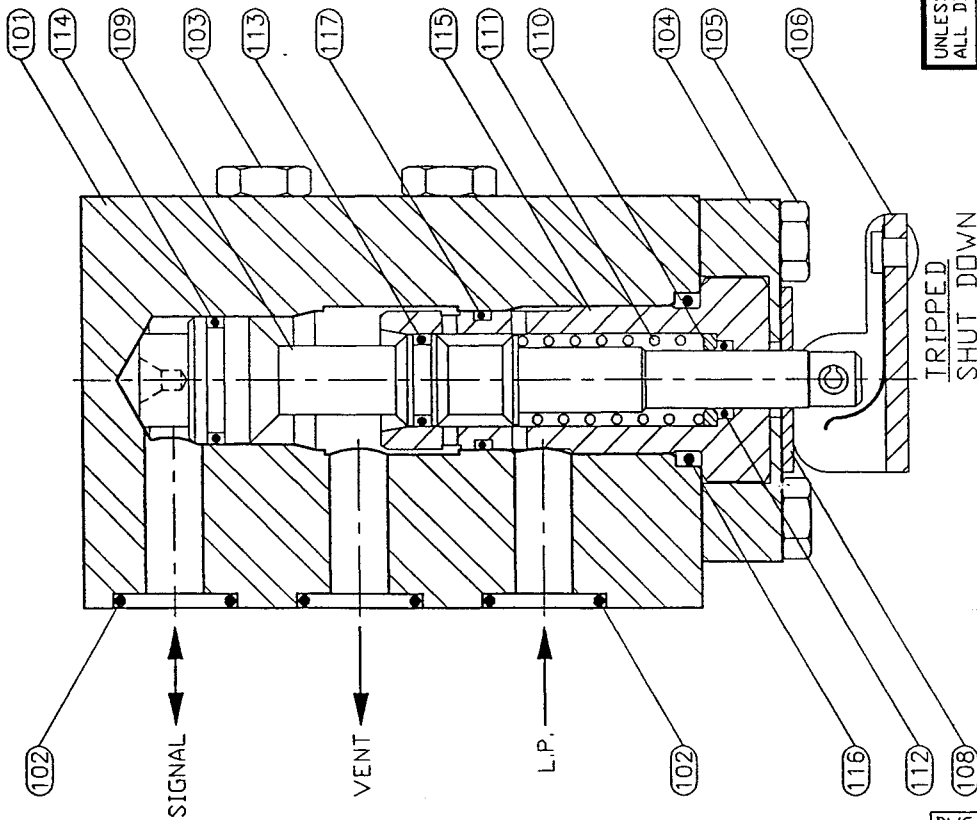
## II SPECIFICATIONS

1. High pressure SCH module with HP-2-SC OR BHP 3 handpump, 0-2000 PSI HP gauge, and 0-160 PSI LP gauge:
  - a) HP Relief set at 1500 - 1750 PSI
  - b) LP Relief set at 130 PSI
  - c) MECO Regulator set at 80 -100 PSI, recommended setting 80 PSI.
2. Low pressure SCH module with HP-2-SC handpump, and 0-300 PSI LP gauge:
  - a) LP Relief set at 250 PSI
3. Common components to the low and high pressure systems include:
  - a) Pilot to close valve, reset valve, toggle valve, or manual pilot valve requires 40 to 60 PSI on the signal port to sustain auto mode.
  - b) Solenoid valve with voltage of 24 VDC, 125 VDC, or 120 VAC with MAWP 150 PSI to be specified by user.
  - c) High/Low pressure pilot upper block connected to the self contained hydraulic module, with an operating pressure from 60 to 130 PSI. Process sensing pressure MAWP depends on the manufacturer.
  - d) For valve operator, see the service manual for particular type.
  - e) Reservoir is cast aluminum, fabricated steel is optional.

NOTE: If parts are required, advise model and serial number of equipment.

| ITEM | DESCRIPTION           | MATERIAL          | QTY | NOTE |
|------|-----------------------|-------------------|-----|------|
| 101  | BODY, RESET VALVE     | AL 6061-T6        | 1   |      |
| 102  | O-RING, RESET VALVE   | NITRILE           | 3   | (Y)  |
| 103  | CAPSCREW, RESET VALVE | SS 304            | 3   |      |
| 104  | SLEEVE RETAINER       | AL 6061-T6        | 1   |      |
| 105  | CAPSCREW, SLEEVE RET  | SS                | 2   |      |
| 106  | TOGGLE ASSEMBLY       | AL 6061-T6/SS 301 | 1   |      |
| 107  | SLOTTED SPRING PIN    | SS 420            | 1   |      |
| 108  | WASHER TOGGLE         | NYLON             | 1   | (Y)  |
| 109  | SPOOL, RESET VALVE    | AL 6061-T6        | 1   |      |
| 110  | WASHER, SPRING        | AL 6061-T6        | 1   |      |
| 111  | SPRING, RESET VALVE   | SS 302            | 1   |      |
| 112  | O-RING, SLEEVE STEM   | NITRILE           | 1   | (Y)  |
| 113  | O-RING, SPOOL         | NITRILE           | 1   | (Y)  |
| 114  | O-RING, SPOOL PISTON  | NITRILE           | 1   | (Y)  |
| 115  | SLEEVE, RESET VALVE   | TEFLON            | 1   |      |
| 116  | O-RING, SLEEVE HEAD   | NITRILE           | 1   | (Y)  |
| 117  | O-RING, SLEEVE        | NITRILE           | 1   | (Y)  |

NOTE: (Y) RECOMMENDED SPARE PARTS/REPAIR KIT FASTENERS AND SERVICE TOOLS ARE ANSI/INCH SIZE



**BETTIS** BETTIS CANADA LTD.  
Actuators & Controls  
RESET VALVE  
FOR SELF-CONTAINED HYDRAULIC

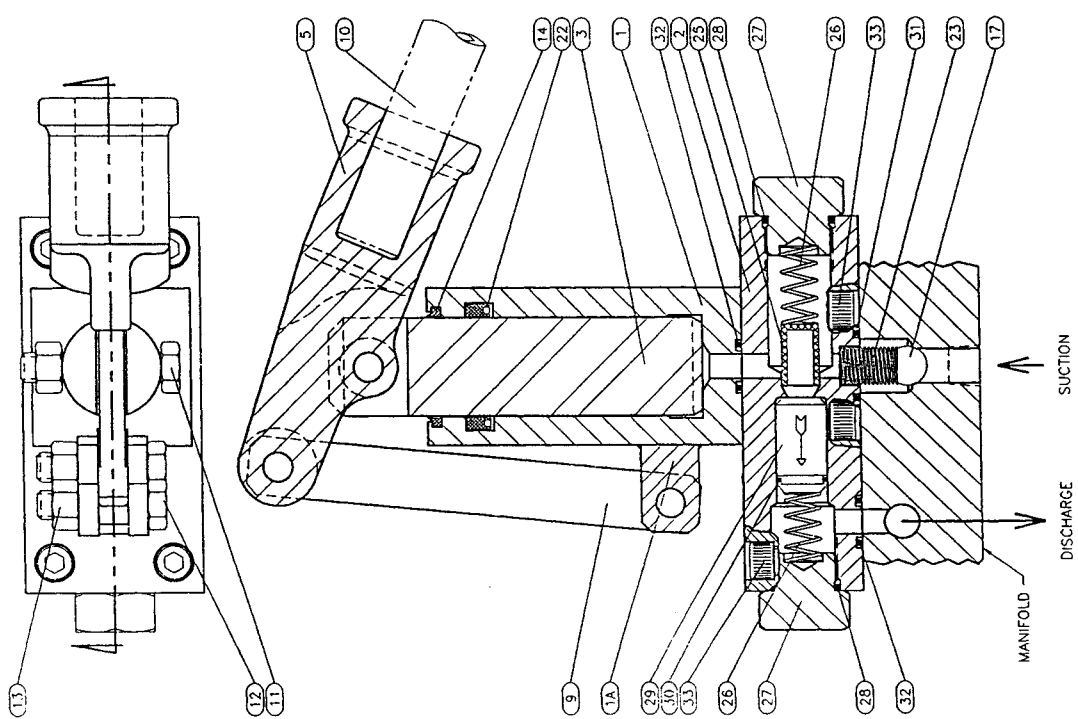
UNLESS SPECIFIED OTHERWISE ALL DIMENSIONS INCHES (mm)  
REDRAW, UPDT STDS. WAS 1-0019-04  
RS-1996-10-15 @ SALES  
UPDATE TITLE BLOCK  
MN-1992-10-13 @ SALES  
REV. BY-DATE+REF

|                     |           |     |
|---------------------|-----------|-----|
| C-0069--DWG_VIEW_00 | DATE      | REV |
| DCT-15-96           | JUN-12-84 | 4-  |
| SCALE 1:1           | CHK       |     |
| BY KW               | DATE      |     |
| DWG. NO. C-0069     |           |     |

DWG. NO. C-0069

| ITEM | PART NO. | DESCRIPTION           | MATERIAL         | QTY | NOTE |
|------|----------|-----------------------|------------------|-----|------|
| 1    | 908-001  | BODY                  | ALSI C1020 ZN PL | 1   |      |
| 1A   | 908-001  | P1VDT                 | ALSI C1020 ZN PL | 1   |      |
| 2    | 908-002  | BASE                  | AL 6061-T6       | 1   |      |
| 3    | 908-003  | RAM                   | ALSI C1045 CH PL | 1   |      |
| 5    | 908-005  | LEVER                 | D.I. 65-45-12 PL | 1   |      |
| 9    | 908-009  | CONNECTING LINK       | ALSI C1020 ZN PL | 2   |      |
| 10   | 908-010  | HANDLE                | ASTM A53-B ZN PL | 1   |      |
| 11   | 908-011  | PIN, RAM              | HXHC GR 5 ZN PL  | 1   |      |
| 12   | 908-012  | PIN, CONNECTING LINK  | HXHC GR 5 ZN PL  | 2   |      |
| 13   | 908-013  | LOCKNUT               | HEXN ZN PL       | 3   |      |
| 14   | 908-014  | VIPER                 | URETHANE         | 1   | (Y)  |
| 17   | 908-017  | BALL, SUCTION PORT    | CH PL STEEL      | 1   |      |
| 22   | 908-022  | ROD POLYPAK           | URETHANE/NITRILE | 1   | (Y)  |
| 23   | 908-023  | SPRING, SUCTION PORT  | SS 302           | 1   |      |
| 25   | 908-025  | FILTER ELEMENT        | SS 316           | 1   |      |
| 26   | 908-026  | SPRING                | SS 302           | 2   |      |
| 27   | 908-027  | END PLUG              | AL 7075-T651     | 2   |      |
| 28   | 908-028  | O-RING, END PLUG      | NITRILE          | 2   | (Y)  |
| 29   | 908-029  | CHECK VALVE CARTRIDGE | CS/NITRILE       | 1   |      |
| 30   | 908-030  | O-RING, CHECK VALVE   | NITRILE          | 1   | (Y)  |
| 31   | 908-031  | O-RING, SUCTION PORT  | NITRILE          | 1   | (Y)  |
| 32   | 908-032  | O-RING, BODY          | NITRILE          | 2   | (Y)  |
| 33   | 908-033  | SOCKET HEAD SCREW     | HXSC GR 8 ZN PL  | 4   |      |

NOTE:  
 - BODY AND HANDLE MAY BE ROTATED TO ANY QUADRANT (SHOWN STANDARD)  
 - ITEM 1 AND 1A ARE WELDED  
 - (Y) SOFT PARTS REPAIR KIT PART NO. SPRK-HP2\_SC  
 - FASTENERS AND MAINTENANCE TOOLS ARE ANST/INCH SIZE



SPECIFICATIONS:  
 TEMP. RATING: -50°F TO 170°F (-46°C TO 77°C)  
 MASS: 8.11 LBm (3.68 kg)  
 MAX.P.P: 2000 PSIG (13,789 kPa(g))  
 DISPLACEMENT: 2 CU. IN (32 mL) PER CYCLE

**BETTS**  
 A Division of  
**BETTS CANADA LTD.**

HANDPUMP MODEL HP-2-SC  
 ASSEMBLY AND SPECIFICATIONS  
 FOR PRESSUREGUARD (SELF CONTAINED HYDRAULIC)

A-0188--DWG, VIEW, 00  
 SCALE: 2:3  
 V.O. 8388-1-R  
 DATE: AUG-08-83  
 REV: 3-

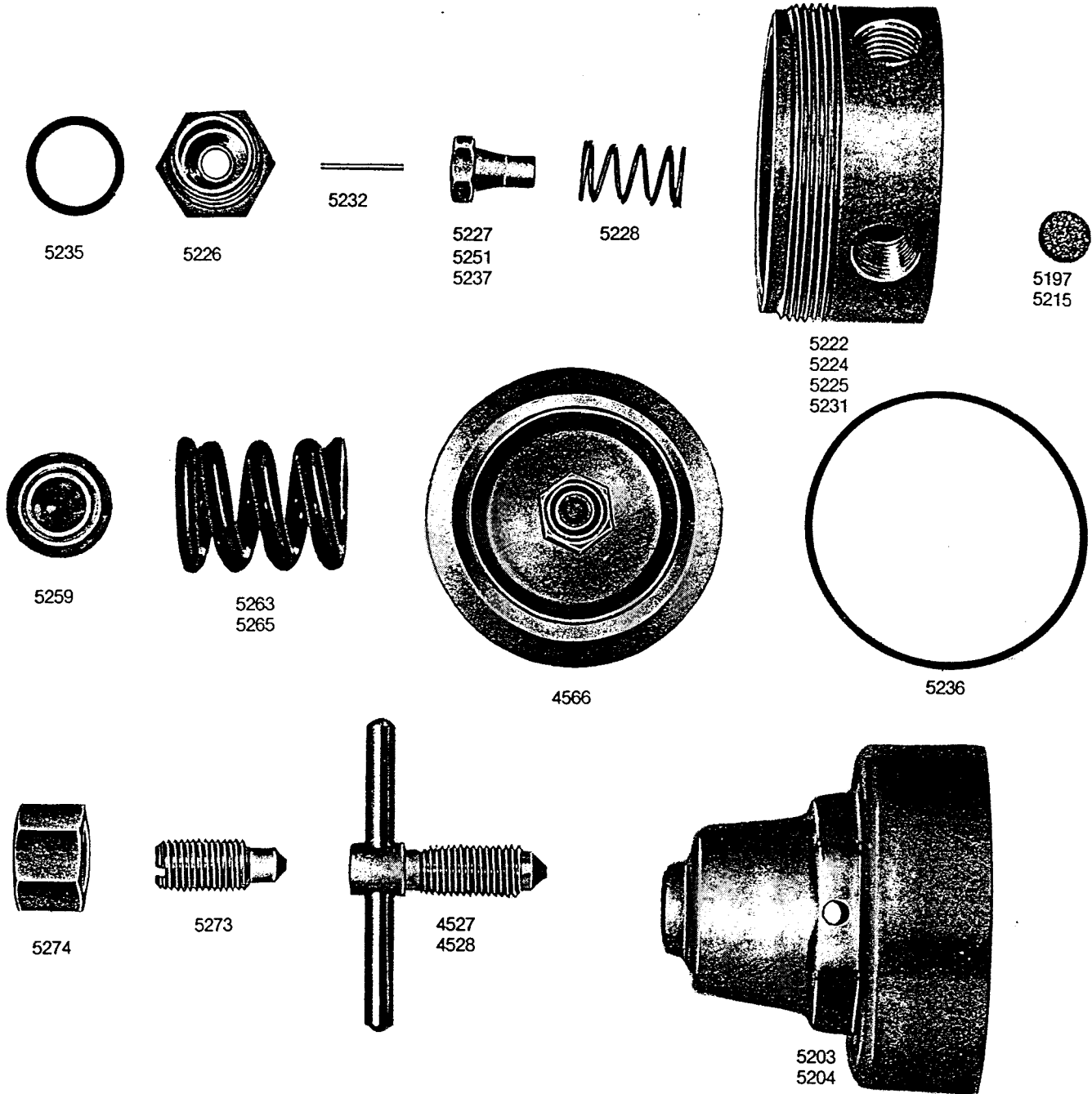
UNLESS SPECIFIED OTHERWISE  
 ALL DIMENSIONS INCHES (mm)

UPDT STD. UPDT TABLE AND  
 SPEC. SPRK. AND TOOL SIZE  
 VL-1995-11-2089715-1-S  
 REDRAWN UPDT STD.  
 20-1992-07-1089715-1-S

TELEPHONES:  
 XX 403 (410)  
 XX 402 (45)  
 X 401 (42)

DWG. NO. AB0188

# TYPE B INDUSTRIAL REGULATOR PARTS LIST



**Stock No.**

**Description**

4527—J-4B Low Pressure Tee Adj. Screw  
 4528—J-4 High Pressure Tee Adj. Screw  
 4566—B-7 Diaphragm Assembly  
 5197—Filter Screen, Brass  
 5203—B-12-A Cap Type Bonnet  
 5204—B-12 Tee Type Bonnet  
 5215—Sintered Brass Filter  
 5222—B-1F Body (for flowmeter outlet)  
 5224—B-1A Industrial Body, 1-HP, 2-LP  
 5225—B-1C Industrial Body, 1-HP, 3-LP  
 5226—A-B-2 Nozzle  
 5227—A-B-3 Seat Assembly, Buna-N

**Stock No.**

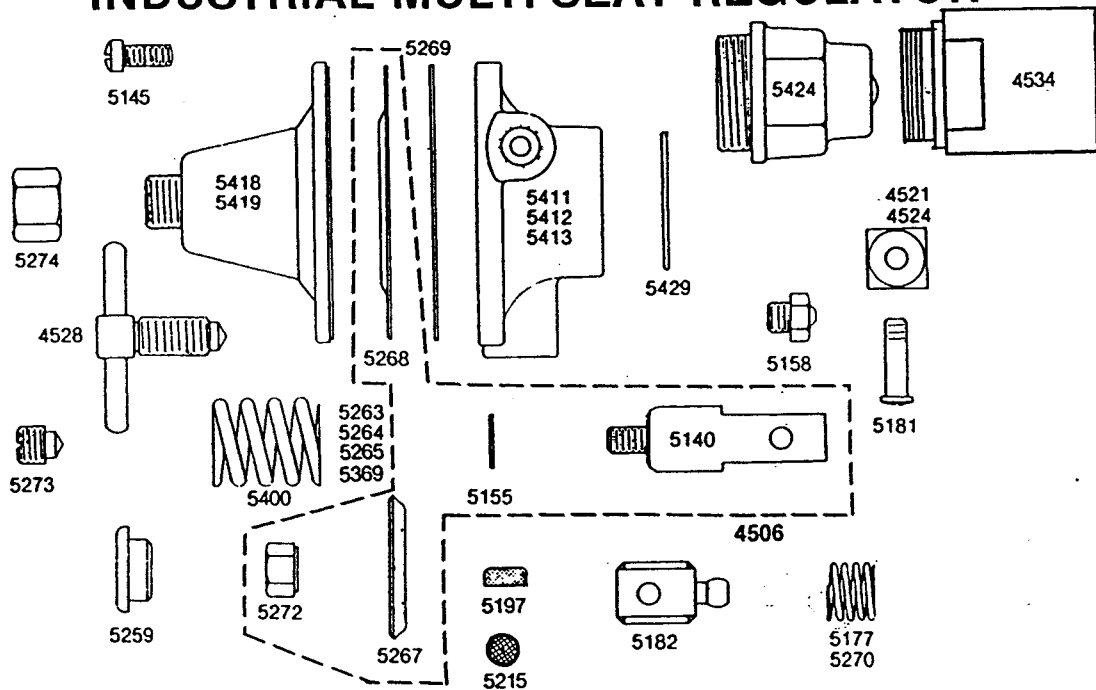
**Description**

5228—A-B-4 Seat Spring  
 5231—B-1-B Industrial Body, 2-HP, 2-LP  
 5232—.687 Push Off Pin (for all gases)  
 5235—Nozzle Seal "O" Ring, Pkg. 12  
 5236—Diaphragm Seal "O" Ring, Pkg. 12  
 5237—Seat Assembly, Viton  
 5251—Seat Assembly, Neoprene  
 5259—J-5 Spring Button  
 5263—J-7A Bonnet Spring, 20 PSI  
 5265—J-7-150 Bonnet Spring, 150 PSI  
 5273—J-30 Slotted Adjusting Screw  
 5274—J-31 Hex Protection Cap





# TYPE P-30, P-50, P-125, P-150, & P-225 INDUSTRIAL MULTI-SEAT REGULATOR



| Stock No. | Description  |
|-----------|--|
| 4506      | Diaphragm-Yoke Assembly .....                                |
| 4521      | Seat Block with White Nylon Seats .....                      |
| 4524      | Seat Block with Kel-F Seats for CO <sub>2</sub> .....        |
| 4528      | Adjusting Screw Assembly .....                               |
| 4534      | ENVIRO-CAP, Water Heated Back Cap Assembly .....             |
| 5140      | Yoke (Part of 4506) .....                                    |
| 5145      | Bonnet Screw 6 required, Pkg. 12 .....                       |
| 5155      | Yoke Gasket, Teflon, Pkg. 12 (Part of 4506) .....            |
| 5158      | Nozzle with 5/64" Orifice, Pkg. 6 .....                      |
| 5177      | Rear Spring, for over 500 PSI Inlet Pressure, Standard ..... |
| 5181      | Yoke Clamping Screw, Pkg. 6 .....                            |
| 5182      | Yoke Guide .....   |
| 5197      | Filter Screen, pkg. 6 .....                                  |
| 5215      | Sintered Filter, pkg. 12, Standard .....                     |
| 5259      | Spring Button .....  |
| 5263      | Compression Spring for 30 PSI Pressure (Red) .....           |
| 5264      | Compression Spring for 125 PSI Pressure (Green) .....        |
| 5265      | Compression Spring for 150 PSI pressure (Purple) .....       |
| 5267      | Diaphragm Plate (Part of 4506) .....                         |
| 5268      | Stainless Steel Diaphragm (Part of 4506) .....               |
| 5269      | Diaphragm Gasket, Pkg. 6 .....                               |
| 5272      | Diaphragm Plate Nut (Part of 4506) .....                     |
| 5273      | Slot Type Adjusting Screw .....                              |
| 5274      | Protection Cap for Slot Adjusting Screw .....                |
| 5369      | Compression Spring for 50 PSI pressure (Black) .....         |
| 5400      | Compression Spring for 225 PSI pressure (Grey) .....         |
| 5411      | Body, 1 inlet, 2 outlets P-1-DA .....                        |
| 5412      | Body, 1 inlet, 3 outlets P-1-DC .....                        |
| 5413      | Body, 2 inlets, 2 outlets P-1-DD .....                       |
| 5418      | Bonnet, for "T" Type Adjusting Screw .....                   |
| 5419      | Bonnet, for Slotted Type Adjusting Screw .....               |
| 5423      | Allen Head Adj. Screw .....                                  |
| 5424      | Back Cap .....   |
| 5429      | Back Cap Gasket, Teflon, Pkg. 12 .....                       |

### III PRESSUREMATIC

Set point adjustment for Series 2000, 2200, 2400:

NOTE: Refer to drawing APB0570.

This is done with the assembly complete and supply air on the pilot valve for P-AR and P-MR models.

NOTE: In the field this requires a calibration kit with the ability to supply high and low setpoint pressures (eg. nitrogen bottle with block & bleed valve).

#### 1. Cases with low and high set points:

NOTE: The low set point must be adjusted first. It will not be affected by the high set point adjustment but the high set point is affected when the low set point is adjusted.

- a) Set the high trip bolt fully away from the trip spring.
- b) Repeatedly adjust the low trip bolt and decrease pressure through the low set point until the low trip occurs consistently at the low set point. Tighten the lock nut and recheck. Check that there is at least 0.02" piston travel from low trip to bottom stop.

NOTE: When adjusting the low trip bolt, the upper arm of the trip spring must be pushed down. This unloads the bolt and allows it to be turned by hand.

- c) Repeatedly adjust the high trip bolt and increase pressure through the high set point until the high trip occurs consistently at the high set point. Tighten the lock nut and recheck.

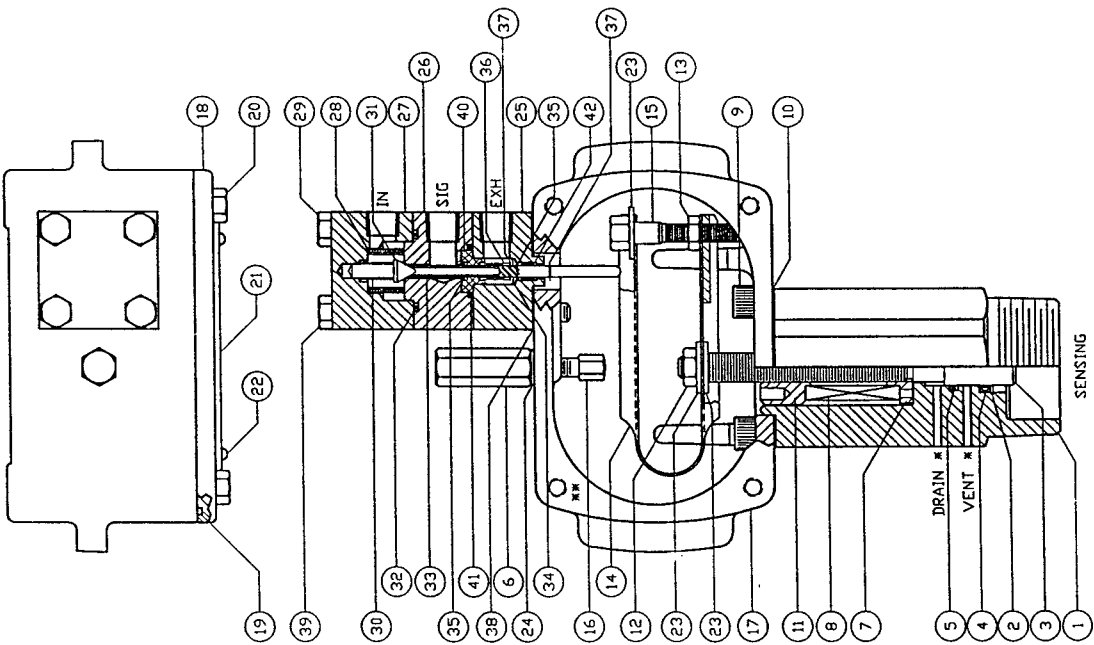
#### 2. Cases with low set point only:

- a) Set high trip bolt fully away from the trip spring.
- b) Adjust the low set point as described in 1.b) above.
- c) To disable high trip, increase pressure until piston is at upper stop. Adjust high trip bolt downward until high trip occurs then retract 1/2 turn. Check that high trip does not occur when piston travels to upper stop. This high trip bolt adjustment is to prevent the trip spring from placing unnecessary force on the spool.

#### 3. Cases with high set point only:

- a) To disable low trip, adjust low trip bolt until low trip occurs when piston is within 0.020" of bottom stop. Then adjust 3 turns upward (ccw viewed from above). Tighten locknut and check that low trip does not occur when piston travels to bottom stop.
- b) Adjust the high set point as described in 1.c) above.

| ITEM | DESCRIPTION              | MATERIAL        | QTY | NOTE |
|------|--------------------------|-----------------|-----|------|
| 1    | BODY                     | C1018           | 1   |      |
| 2    | RETAINING RING, BODY     | SS 304          | 1   |      |
| 3    | PISTON                   | SS 316          | 1   |      |
| 4    | SEAL #1, PISTON          | TFE             | 1   | (Y)  |
| 5    | SEAL #2, PISTON          | NITRILE         | 1   | (Y)  |
| 6    | HIGH TRIP BLIND NUT      | AL 6061-T3      | 1   |      |
| 7    | SPRING SEAT              | CS PL           | 1   |      |
| 8    | RANGE SPRING             | CR-V ALLOY      | 1   | (V)  |
| 9    | BOLT, BODY               | SS 304          | 2   |      |
| 10   | GASKET, BODY             | PLANT FIBRE     | 1   | (Y)  |
| 11   | RANGE SCREW              | SS 416          | 1   |      |
| 12   | JAM NUT, TRIP SPRING     | SS 304          | 1   |      |
| 13   | JAM NUT, LOW TRIP BOLT   | SS 304          | 1   |      |
| 14   | TRIP SPRING ASSEMBLY     | SS 301          | 1   |      |
| 15   | LOW TRIP ADJUSTMENT BOLT | AL 6061-T6      | 1   |      |
| 16   | HIGH TRIP BOLT           | SS 316          | 1   |      |
| 17   | HOUSING                  | AL CAST         | 1   |      |
| 18   | COVER PLATE              | AL CAST         | 1   |      |
| 19   | O-RING, COVER            | NITRILE         | 1   | (Y)  |
| 20   | BOLT, COVER              | SS 304          | 4   |      |
| 21   | NAMEPLATE                | SS 304          | 1   |      |
| 22   | DRIVE SCREW, NAMEPLATE   | SS 18-8         | 4   |      |
| 23   | WASHER, TRIP SPRING      | SS 304          | 3   |      |
| 24   | STAT-O-SEAL              | CS/NITRILE      | 1   | (Y)  |
| 25   | LOWER BODY, PILOT        | AL 6061-T6      | 1   |      |
| 26   | UPPER BODY, PILOT        | AL 6061-T6      | 1   |      |
| 27   | END CAP, PILOT           | AL 6061-T6      | 1   |      |
| 28   | FILTER ELEMENT, PILOT    | CELLULOSE/RESIN | 1   | (Y)  |
| 29   | CAPSCREW, END CAP        | SS 304          | 2   |      |
| 30   | SPRING, POPPET           | SS 302          | 1   |      |
| 31   | POPPET, PILOT            | TFE             | 1   | (Y)  |
| 32   | O-RING, UPPER BODY       | NITRILE         | 1   | (Y)  |
| 33   | SPOOL, PILOT             | SS 304          | 1   |      |
| 34   | RETAINING RING, SEAL     | SS 304          | 1   | (Y)  |
| 35   | O-RING, SPOOL            | NITRILE         | 2   | (Y)  |
| 36   | SPRING, SPOOL            | SS 302          | 1   |      |
| 37   | RETAINING RING, SPOOL    | SS 304          | 2   |      |
| 38   | GASKET, PILOT            | PLANT FIBRE     | 1   | (Y)  |
| 39   | CAPSCREW, PILOT MOUNTING | SS 304          | 2   |      |
| 40   | SLEEVE, PILOT            | DELFIN          | 1   | (Y)  |
| 41   | O-RING, SLEEVE           | NITRILE         | 1   | (Y)  |
| 42   | BUSHING, SPOOL           | TFE             | 1   |      |



**BETTS BETTS CANADA LTD.**  
 Pressurematic Assembly  
 (P-AR2000 TYPICAL, CS BODY, STD TRIM)

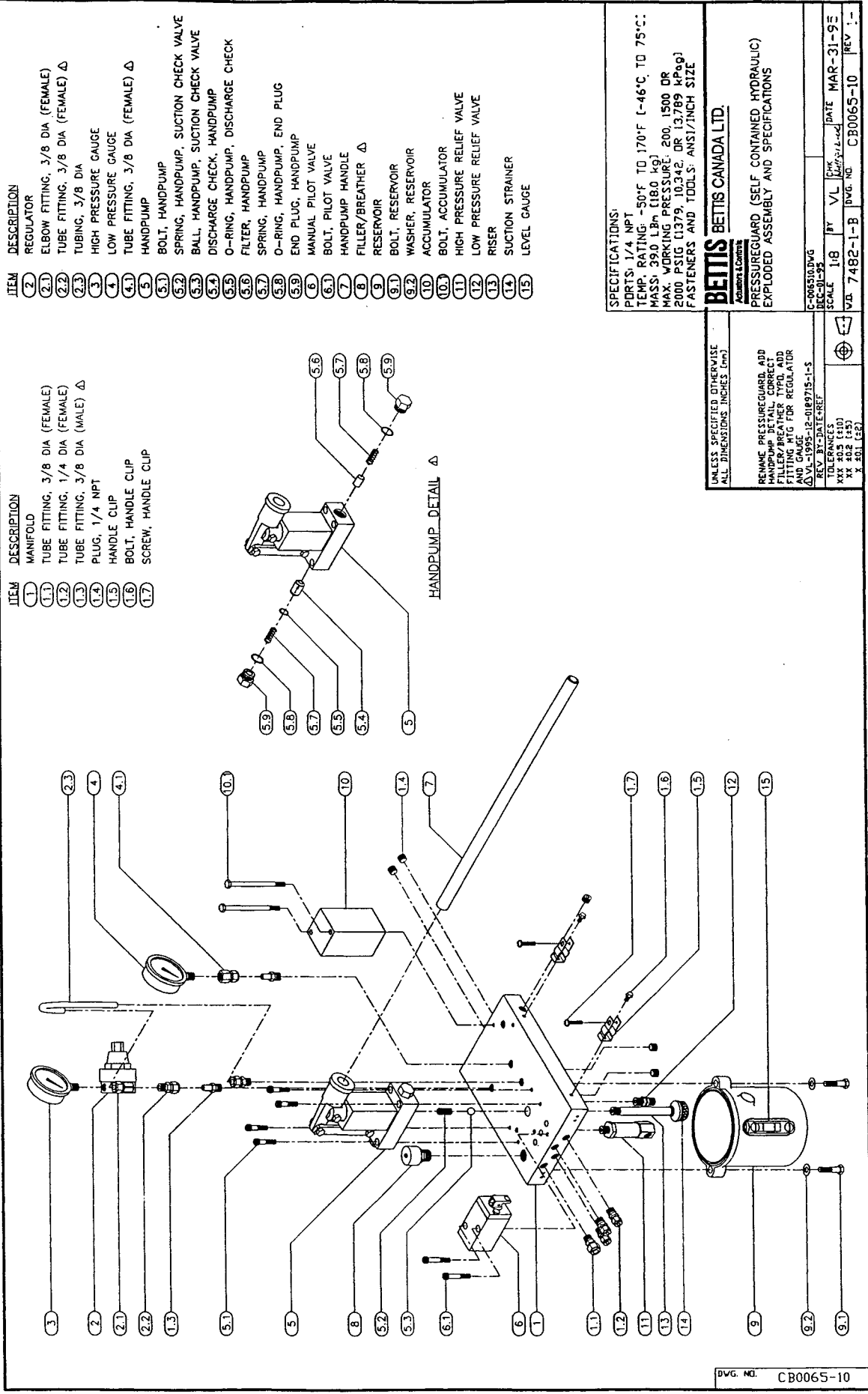
UNLESS SPECIFIED OTHERWISE ALL DIMENSIONS INCHES (mm)

UPPT HOUSING -17, BOLTS WERE CS  
 UPPT STDS RS-1995-12-13 & SALES REQ  
 UPPT SPOOL, TFE POPPET  
 UPPT SPRING, SS 302 & WASHER  
 UPPT SPRING, SS 302 & WASHER  
 REV BY: DATE: REF

TOLERANCES  
 XXX .005 (+.010)  
 XX .012 (+.020)  
 X .030 (+.040)

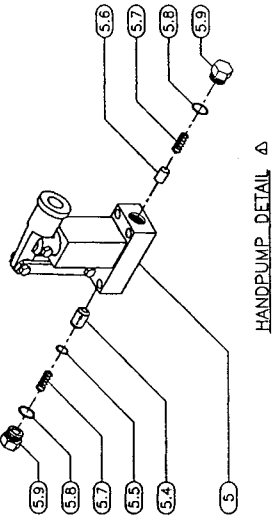
APB0570-DWG. VIEW: 00 WEIGHT 11.0 LB  
 DEC-18-96 SCALE 1:2 BY DY CHK  
 DATE OCT-21-91  
 DWG. NO. APB0570 REV 4-

DWG. NO. APB0570



- ITEM DESCRIPTION**
- (1) MANIFOLD
  - (1.1) TUBE FITTING, 3/8 DIA (FEMALE)
  - (1.2) TUBE FITTING, 1/4 DIA (FEMALE)
  - (1.3) TUBE FITTING, 3/8 DIA (MALE) Δ
  - (1.4) PLUG, 1/4 NPT
  - (1.5) HANDLE CLIP
  - (1.6) BOLT, HANDLE CLIP
  - (1.7) SCREW, HANDLE CLIP

- ITEM DESCRIPTION**
- (2) REGULATOR
  - (2.1) ELBOW FITTING, 3/8 DIA (FEMALE)
  - (2.2) TUBE FITTING, 3/8 DIA (FEMALE) Δ
  - (2.3) TUBING, 3/8 DIA
  - (3) HIGH PRESSURE GAUGE
  - (4) LOW PRESSURE GAUGE
  - (4.1) TUBE FITTING, 3/8 DIA (FEMALE) Δ
  - (5) HANDPUMP
  - (5.1) BOLT, HANDPUMP
  - (5.2) SPRING, HANDPUMP, SUCTION CHECK VALVE
  - (5.3) BALL, HANDPUMP, SUCTION CHECK VALVE
  - (5.4) DISCHARGE CHECK, HANDPUMP
  - (5.5) O-RING, HANDPUMP, DISCHARGE CHECK
  - (5.6) FILTER, HANDPUMP
  - (5.7) SPRING, HANDPUMP
  - (5.8) O-RING, HANDPUMP, END PLUG
  - (5.9) END PLUG, HANDPUMP
  - (6) MANUAL PILOT VALVE
  - (6.1) BOLT, PILOT VALVE
  - (7) HANDPUMP HANDLE
  - (8) FILLER/BREATHER Δ
  - (9) RESERVOIR
  - (9.1) BOLT, RESERVOIR
  - (9.2) WASHER, RESERVOIR
  - (10) ACCUMULATOR
  - (10.1) BOLT, ACCUMULATOR
  - (11) HIGH PRESSURE RELIEF VALVE
  - (12) LOW PRESSURE RELIEF VALVE
  - (13) RISER
  - (14) SUCTION STRAINER
  - (15) LEVEL GAUGE



**SPECIFICATIONS**  
 PORTS, 1/4 NPT  
 TEMP. RATING: -50°F TO 170°F (-46°C TO 75°C)  
 MASS: 39.0 Lbm (18.0 kg)  
 MAX. WORKING PRESSURE: 200, 1500 DR  
 2000 PSIG (1379, 10342, OR 13789 kPa(g))  
 FASTENERS AND TOOLS: ANSI/INCH SIZE

**BETTS BETTIS CANADA LTD.**  
 Acheson & Co. Inc.

PRESSUREGUARD (SELF CONTAINED HYDRAULIC)  
 EXPLODED ASSEMBLY AND SPECIFICATIONS

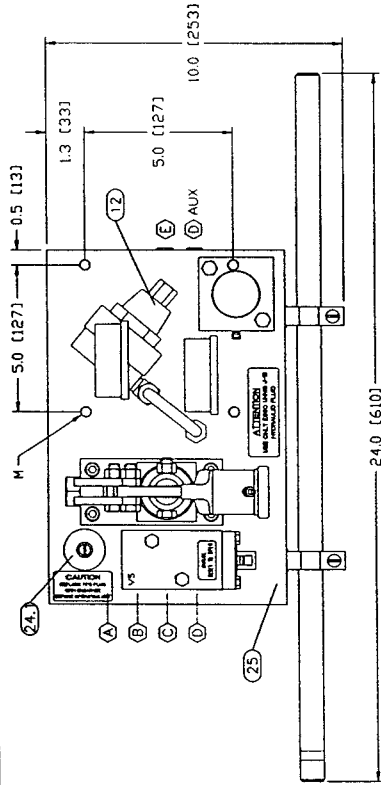
C-066510.DWG  
 REC-BJ-95  
 SCALE 1:8 BY VL [Signature]  
 DATE MAR-31-9E  
 VJD 7482-1-B DWG. NO. CB0065-10 REV 1-

UNLESS SPECIFIED OTHERWISE  
 ALL DIMENSIONS INCHES (mm)

RENAME PRESSUREGUARD, ADD  
 HANDLE, BREATHER TYPE, ADD  
 FITTING, MTG FOR REGULATOR  
 AND GAUGE  
 Δ VL-1995-12-0109715-1-5  
 REV BY DATE/REF  
 XX 40.2 (+.01)  
 XX 40.2 (+.01)  
 X 40.1 (+.01)

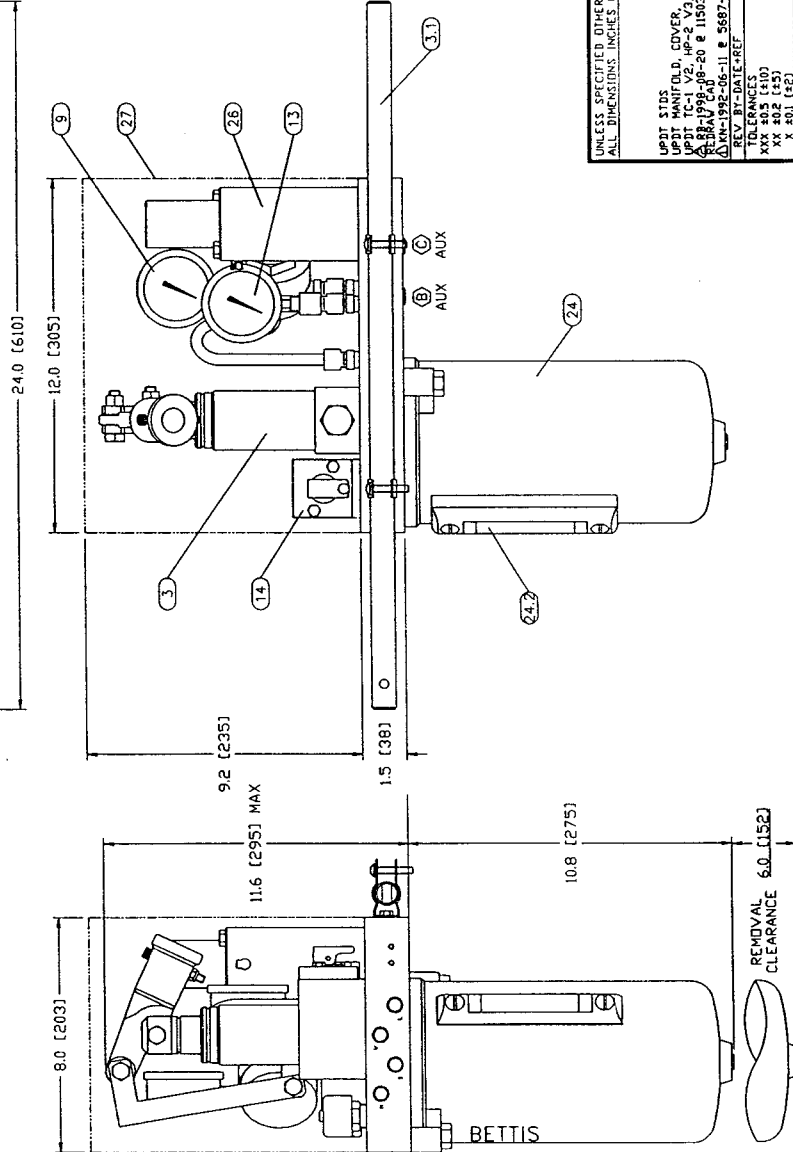
LIST OF COMPONENTS:

- (3) HANDPUMP
- (3.1) HANDPUMP HANDLE
- (9) HIGH PRESSURE GAUGE
- (12) REGULATOR
- (13) LOW PRESSURE GAUGE
- (14) PILOT TO CLOSE VALVE
- (24) RESERVOIR
- (24.1) FILLER/BLEEDER
- (24.2) RESERVOIR LEVEL GAUGE
- (25) MANIFOLD
- (26) LP ACCUMULATOR
- (27) COVER (OPTIONAL)



- (A) HIGH PRESSURE  $\leq 1/4$  NPT  $\rightarrow$
- (B) SIGNAL  $\leq 1/4$  NPT  $\rightarrow$
- (C) VENT  $\leq 1/4$  NPT  $\rightarrow$
- (D) LOW PRESSURE  $\leq 1/4$  NPT  $\rightarrow$
- (E) RESERVOIR VENT  $\leq 1/4$  NPT  $\rightarrow$

M, MOUNTING: 4 HOLES, 3/8 - 16NC X 0.62 (16) DEEP FROM BELOW



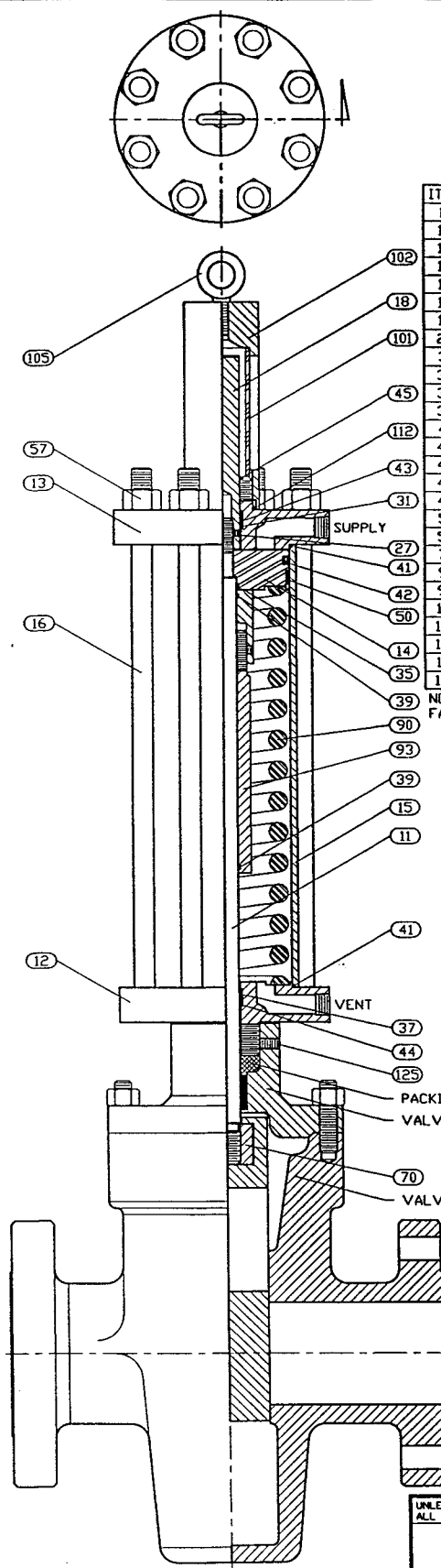
REMOVAL CLEARANCE 6.0 (152)

**SPECIFICATIONS:**  
 TEMP. RATING: -50°F TO 150°F (-46°C TO 65°C)  
 MAX. P. 1500 PSIG (103 BAR)  
 MAX. SIGNAL 150 PSIG (10.3 BAR)  
 DISPLACEMENT 125 CU. IN. (0.002 CU. M)  
 CAPACITY: 200 CU. IN. (0.003 CU. M)  
 TOTAL WEIGHT: 35 Lbm (15.8 kg)

**BETTIS** BETTIS CANADA LTD.  
 Assembly & Control  
 ASSEMBLY  
 SC-2HP PRESSUREGUARD  
 SELF-CONTAINED HYDRAULIC MODULE (SCHM)  
 (200 CU. IN. CAPACITY, 125 CU. IN. DISPLACEMENT)  
 C0065--DVG\_LAYER\_00  
 AUG-80-37  
 SCALE 1:4 BY KW  
 DATE FEB-12-85  
 DVG. NO. CB0065-00 REV 2-

UNLESS SPECIFIED OTHERWISE ALL DIMENSIONS INCHES (mm)  
 UPDT STDS  
 LPDT MANIFOLD, COVER, RESERVOIR  
 P. 12-1-1-1-2 VS  
 P. 12-1-1-1-2 VS  
 P. 12-1-1-1-2 VS  
 P. 12-1-1-1-2 VS  
 REV BY-DATE-REF  
 X 40.2 (103)  
 X 40.2 (103)  
 X 40.2 (103)  
 X 40.2 (103)

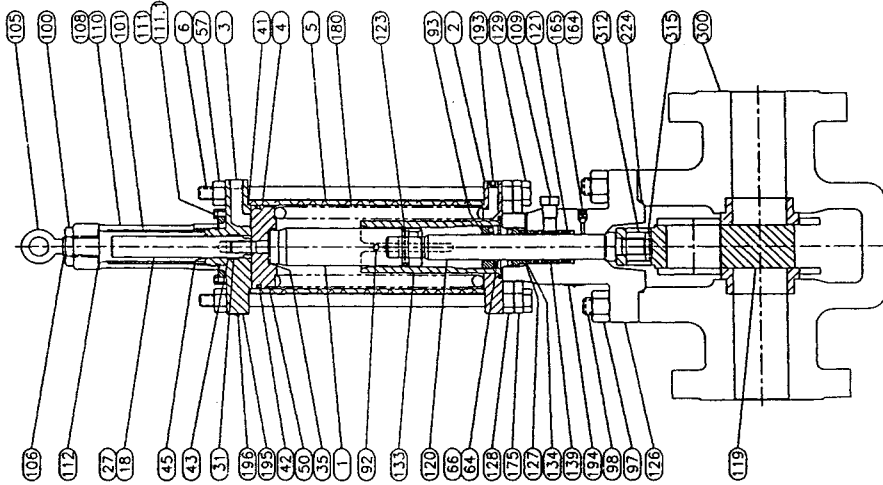
C0065-00



| ITEM | DESCRIPTION            | MATERIAL           | QTY | NOTE |
|------|------------------------|--------------------|-----|------|
| 11   | DRIVE ROD              | 17-4 PH DR AS SPEC | 1   |      |
| 12   | CYLINDER PLATE         | ASTM A516-70       | 1   |      |
| 13   | END CAP                | ASTM A516-70       | 1   |      |
| 14   | PISTON                 | ASTM A516-70       | 1   |      |
| 15   | CYLINDER               | AISI C1026         | 1   |      |
| 16   | STAY ROD               | AISI 4140          | 8   |      |
| 18   | DRIVE ROD EXTENSION    | AISI C1045 CHPL    | 1   |      |
| 27   | SETSCREW               | ANSI B18.3         | 1   |      |
| 31   | ROD GUIDE, UPPER       | ACETAL             | 1   |      |
| 35   | O-RING, PISTON CENTER  | NITRILE            | 1   | (Y)  |
| 37   | ROD GUIDE, LOWER       | ACETAL             | 1   |      |
| 39   | O-RING, STDP           | NITRILE            | 2   | (Y)  |
| 41   | O-RING, CYLINDER       | NITRILE            | 1   | (Y)  |
| 42   | POLYPAK, PISTON        | MOLYTHANE          | 1   | (Y)  |
| 43   | POLYPAK, END CAP       | MOLYTHANE          | 1   | (Y)  |
| 44   | O-RING, CYLINDER PLATE | NITRILE            | 1   | (Y)  |
| 45   | VIPER                  | MOLYTHANE          | 1   |      |
| 50   | WEAR RING, PISTON      | MOLYTHANE          | 1   |      |
| 57   | NUT, STAY ROD          | ASTM A194 GR.2H    | 8   |      |
| 70   | TEE NUT                | PER SPEC.          | 1   |      |
| 90   | SPRING                 | ALLOY STEEL        | 1   |      |
| 93   | STDP TUBE              | AISI C1020         | 1   |      |
| 101  | INDICATOR SLEEVE       | ACRYLIC            | 1   |      |
| 102  | INDICATOR COVER        | AISI C12L14        | 1   |      |
| 105  | EYE BOLT               | CS                 | 1   |      |
| 112  | O-RING, SLEEVE         | NITRILE            | 1   | (Y)  |
| 125  | SETSCREW               | ANSI B18.3         | 1   |      |

NOTE: (Y) RECOMMENDED SPARE PARTS/REPAIR KIT  
FASTENERS AND MAINTENANCE TOOLS ARE ANSI/INCH SIZE

|  |                                  |  |                |
|--|----------------------------------|--|----------------|
| UNLESS SPECIFIED OTHERWISE<br>ALL DIMENSIONS INCHES (IN)                               |                                  | <b>BETTIS</b> BETTIS CANADA LTD.<br><i>Actuators &amp; Controls</i>                                |                |
| *STD PART LIST TABLE, UPDT STDS<br>AS-1996-02-29 SALES REQ<br>MODEL 5x4x1 FOR 3838-1-E |                                  | SERIES GVO-HP-FS<br>CLOSE COUPLED, THREADED BONNET<br>(TYPICAL REVERSE ACTING VALVE, SHOWN CLOSED) |                |
| REV BY-BATE*REF  | C-0210--DWG_VIEW_00<br>FEB-29-96 | SCALE 1:4  | BY KN          |
| TOLERANCES<br>XXX .005 (±.01)<br>XX .002 (±.005)<br>X .001 (±.02)                      | DATE JUN-11-92                   | CHK DLM-01   | DATE JUN-11-92 |
|  | V.B. 5687-1-E                    | DWG. NO. CB0210  | REV 1-         |



| ITEM | DESCRIPTION               | MATERIAL              | QTY | NOTE | ITEM  | DESCRIPTION              | MATERIAL              | QTY | NOTE |
|------|---------------------------|-----------------------|-----|------|-------|--------------------------|-----------------------|-----|------|
| 1    | DRIVE ROD                 | ALSI C1045 CH PL      | 1   |      | 110   | INDICATOR COVER          | ALSI C12L14           | 1   |      |
| 2    | CYLINDER PLATE            | AS16-70/ALSI C1018    | 1   |      | 111   | POSITION PLATE           | ALSI C12L14           | 1   |      |
| 3    | END CAP                   | AS16-70/ALSI C1018    | 1   |      | 111.1 | BOLT, POSITION PLATE     | SAE GR 5              | 4   |      |
| 4    | PISTON                    | ASTM A516-70          | 1   |      | 112   | O-RING, SLEEVE           | NITRILE               | 1   | (Y)  |
| 5    | CYLINDER                  | ALSI C1026 CH PL BORE | 1   |      | 119   | VALVE GATE               | (Per Valve Mfr Spec)  | 1   | (N)  |
| 6    | STAY ROD                  | ALSI 4140             | 8   |      | 120   | VALVE STEM               | UNS 17-00 Type 630    | 1   |      |
| 18   | INDICATOR ROD             | ALSI C1045 CH PL      | 1   |      | 121   | STEM PACKING SET         | TFE/NITRILE           | 1   | (Y)  |
| 27   | SETScrew, INDICATOR ROD   | SS 304                | 1   | (H)  | 123   | COIL PIN, STEM           | ASTM A487 Gr 4C       | 1   |      |
| 31   | ROD GUIDE, UPPER          | DELFIN                | 1   | (Y)  | 126   | BONNET                   |                       | 1   |      |
| 35   | O-RING, PISTON CENTER     | NITRILE               | 1   | (Y)  | 127   | PACKING FOLLOWER         | ALSI C1045            | 1   |      |
| 41   | O-RING, CYLINDER          | NITRILE               | 2   | (Y)  | 128   | ADAPTER PLATE            | ALSI C1020            | 1   |      |
| 42   | POLYPAK, PISTON           | URETHANE              | 1   | (Y)  | 129   | ADAPTER BOLT             | SAE GR 5              | 4   |      |
| 43   | POLYPAK, END CAP          | URETHANE              | 1   | (Y)  | 133   | ANTI-ROTATION TUBE       | ALSI C1018            | 1   |      |
| 45   | WIPER                     | URETHANE              | 1   | (Y)  | 134   | O-RING, PACKING FOLLOWER | NITRILE               | 1   |      |
| 50   | WEAR RING, PISTON         | MOLYGDARD             | 1   | (Y)  | 139   | LANTERN RING             | SS 316                | 1   |      |
| 57   | NUT, STAY ROD             | ASTM A194 2H          | 8   |      | 164   | BLEEDER PLUG             | SS 304/.316           | 1   |      |
| 64   | CAPSCREW, LOCK STOP       | HXSC SS 316           | 1   |      | 165   | BLEEDER BALL             | SS 302                | 1   |      |
| 66   | WASHER, LOCK STOP         | WSHE SS 410           | 1   |      | 175   | BONNET LOCKPLATE         | ALSI C1020            | 1   |      |
| 92   | ANTI-ROTATION PIN         | SS 302/.316           | 1   |      | 180   | SPRING                   | ALSI 5160 ALLOY STEEL | 1   |      |
| 93   | LOWER STOP                | ALSI C1018            | 1   |      | 191   | DECAL, PISTON TOP        | VINYL                 | 1   | (H)  |
| 97   | NUT, BONNET               | (Per Valve Mfr Spec)  | 8   | (N)  | 193   | VENT/BREATHER            | SS 304                | 1   |      |
| 98   | STUD, BONNET              | (Per Valve Mfr Spec)  | 8   | (N)  | 194   | BONNET NAMEPLATE         | SS 304                | 1   |      |
| 100  | INDICATOR COVER PLUG      | ALSI C12L14           | 1   |      | 195   | ACTUATOR NAMEPLATE       | SS 304                | 1   |      |
| 101  | INDICATOR SLEEVE          | ACRYLIC               | 1   |      | 196   | DRIVE SCREW              | SS 301/.304           | 4   |      |
| 105  | EYEBOLT                   | ASTM A489 PL          | 1   |      | 224   | BONNET GASKET            | (Per Valve Mfr Spec)  | 1   | (N)  |
| 106  | WASHER, FLAT              | SAE                   | 1   |      | 300   | VALVE BODY               | (Per Valve Mfr Spec)  | 1   | (N)  |
| 108  | SETScrew, INDICATOR COVER | SS 304                | 1   | (H)  | 312   | TEE NUT                  | (Per Valve Mfr Spec)  | 1   | (N)  |
| 109  | PLUG                      | ASTM A105             | 1   |      | 315   | SPRING PIN, TEE NUT      | SS 301/.304           | 1   |      |

NOTE:  
 - (H) NOT SHOWN  
 - (N) SUPPLIED WITH VALVE, SHOWN FOR REFERENCE ONLY  
 - (Y) RECOMMENDED SPARE PARTS/REPAIR KIT  
 - REFER TO DWG AB0440 FOR ASSEMBLY INSTRUCTIONS  
 - SHOWN ROTATED 90° ON VALVE BODY, BLEEDER SIDE IS BODY IDENTIFICATION AND FITTING SIDE

| ITEM | DESCRIPTION                                   | MATERIAL | QTY | NOTE |
|------|---|----------|-----|------|
|      | STANDARD TRIM AS ABOVE UNLESS SPECIFIED BELOW |          |     |      |
|      |   |          |     |      |
|      |   |          |     |      |
|      |   |          |     |      |
|      |   |          |     |      |

UNLESS SPECIFIED OTHERWISE ALL DIMENSIONS IN INCHES (mm)

SUPERSEDES DWG. A-0444-10 RS 1  
 REV. 07-2007  
 PL. 1997-02-21E12843-1-M  
 REV. BY: DATE: REF

ASSEMBLY DRAWING  
 GVO-HP-FS-UM  
 FOR REVERSE ACTING VALVE

SCALE: 1:1  
 DATE: JUL-21-97  
 DWG. NO.: AB0444-10  
 REV: 6-

BETTS BETTS CANADA LTD.  
 Assembly Control

AB0444--DWG\_VIEW\_00  
 JUL-21-97  
 PL. CHK. A442/22.8  
 BY: DATE: JUL-21-97  
 DWG. NO.: AB0444-10  
 REV: 6-

| ITEM PART NO. | DESCRIPTION        | MATERIAL                | QTY | NOTE |
|---------------|--------------------|-------------------------|-----|------|
| 155           | 005-095            | LOCKNUT, SPRING         | 1   |      |
| 156           | 700-030            | DECAL                   | 1   | (N)  |
| 160           | 003-160            | SPRING BARREL           | 1   |      |
| 161           | 003-161            | SPRING STOP             | 1   |      |
| 162           | 003-162            | SPRING RETAINING ROD    | 1   |      |
| 163           | 003-163            | SPRING RETAINER         | 1   |      |
| 164           | 003-164            | STAY ROD, S             | 1   |      |
| 166           | SPRING HOUSING     | FWT UNLINED             | 1   | (1)  |
| 167           | 650-390            | SETSCREW, SPRING RET.   | 1   |      |
| 170           | 606-723            | BREATHER/VENT           | 2   | (N)  |
| 171           | 606-212            | REDUCER, S              | 1   | (N)  |
| 172           | 606-501            | REDUCER, P              | 1   | (N)  |
| 173           | 606-501            | PORT PLUG, S            | 1   | (N)  |
| 174           | SEALANT, ADHESIVE  | SILICONE, M             | 4   | (N)  |
| 180           | 003-090            | END STOP, H             | 1   |      |
| 181           | 003-091            | END STOP COVER, H       | 1   |      |
| 182           | CYLINDER PLATE, H  | A516-70 P.C             | 1   |      |
| 183           | CYLINDER RING, H   | A516-70 P.C             | 1   |      |
| 184           | END CAP, H         | A516-70 P.C             | 1   |      |
| 185           | PISTON, H          | 4140 ANN                | 1   |      |
| 186           | CYLINDER, H        | C1026 MH                | 1   |      |
| 187           | POLYPAK, PISTON, H | MOLYTHANE/SS.302        | 1   | (Y)  |
| 304           | 603-304            | SPRING                  | 1   |      |
| 1             | 003-001            | DRIVE CASE & COVER      | 1   |      |
| 3             | 003-003            | YOLKE                   | 1   | (N)  |
| 4             | 003-004            | DRIVE ROD               | 1   |      |
| 5             | 003-005            | DRIVE PIN               | 1   |      |
| 6             | 003-006            | DRIVE ROLLER            | 2   |      |
| 7             | 003-007            | YOLKE COVER             | 1   |      |
| 8             | 050-008            | POSITION INDICATOR      | 1   | (N)  |
| 9             | 620-248            | D-RING, YOLKE           | 1   | (Y)  |
| 10            | 003-010            | YOLKE BUSHING           | 2   |      |
| 12            | 003-012            | YOLKE BEARING           | 2   |      |
| 13            | 003-013            | GASKET, YOLKE COVER     | 1   | (2)  |
| 14            | 003-014            | ROD GUIDE               | 2   |      |
| 15            | 003-015            | SNAP RING, DRIVE PIN    | 2   |      |
| 16            | 630-586            | EYEBOLT                 | 2   |      |
| 17            | 003-017            | BREATHER PLUG           | 1   |      |
| 18            | 650-584            | LOCKWASHER, EYEBOLT     | 2   |      |
| 19            | 630-507            | CAPSCREW, DRIVE CASE    | 10  |      |
| 20            | 650-203            | CAPSCREW, YOLKE COVER   | 3   |      |
| 21            | 650-103            | CAPSCREW, POS. IND.     | 1   | (N)  |
| 22            | 650-585            | FLATWASHER, DRIVE CASE  | 10  |      |
| 24            | 700-099            | DRIVE SCREW, NAMEPLATE  | 2   | (N)  |
| 25            | 650-180            | NUT, POS. IND.          | 1   | (N)  |
| 26            | 003-026            | PIN, DRIVE CASE         | 2   |      |
| 30            | 630-680            | NUT, STAY ROD, S        | 8   |      |
| 32            | 003-032            | END STOP, S             | 1   |      |
| 33            | 003-033            | END STOP COVER, S       | 1   |      |
| 34            | 630-951            | CAPSCREW, PISTON        | 1   |      |
| 35            | 631-325            | NUT, STAY ROD, H        | 6   |      |
| 36            | 650-224            | D-RING, PISTON CENTRE   | 1   | (Y)  |
| 38            | 620-149            | D-RING, CYLINDER RING   | 1   | (Y)  |
| 39            | 620-126            | D-RING, END STOP, H     | 1   |      |
| 40            | 624-220            | POLYPAK, DRIVE ROD      | 1   | (Y)  |
| 48            | 003-048            | STAY ROD, H             | 6   |      |
| 49            | 630-654            | CAPSCREW, CYL. PLATE, H | 6   |      |
| 50            | 620-155            | D-RING, CYLINDER, H     | 2   | (Y)  |
| 52            | 624-540            | WEAR RING, PISTON, H    | 1   | (N)  |
| 64            | 700-100            | NAMEPLATE               | 1   |      |
| 83            | 630-608            | CAPSCREW, CYL. PLATE    | 6   |      |
| 85            | 620-329            | D-RING, DRIVE ROD       | 1   | (Y)  |
| 87            | 630-685            | FLATWASHER, CYL. PLATE  | 6   |      |
| 89            | 620-126            | D-RING, END STOP, S     | 1   | (Y)  |
| 101           | 003-101            | CYLINDER PLATE, S       | 1   |      |
| 104           | 003-104            | END CAP, S              | 1   |      |
| 107           | 005-068            | GASKET, SPRING HOUSING  | 1   |      |
| 108           | 630-971            | CAPSCREW, BACK PLATE    | 1   |      |

**BEIMS BETTIS CANADA LTD.**  
 Industrial & Commercial

REV. BY: DATE: REF. JAN-13-97  
 TOLERANCES: X.XX .005 (.10) X.X .002 (.25) X .50 (.125)  
 SCALE: 1:10  
 DATE: MAR-17-97  
 S/N PREFIX: "25"  
 MODEL: 103D-SRHX100.  
 500 L.B.  
 AB0520

NOTE:  
 - (N) NOT SHOWN  
 - (Y) RECOMMENDED SPARE PARTS/REPAIR KIT  
 - (1) DAMAGED AMALGAM ALTERNATE  
 - (2) APPLY SEALANT UB 77C NON-CORROSIVE SILICONE



