

## Tri-Clamp (SCW) Seal

### Sanitary Tri-Clamp Diaphragm Seal Dimensional Drawing

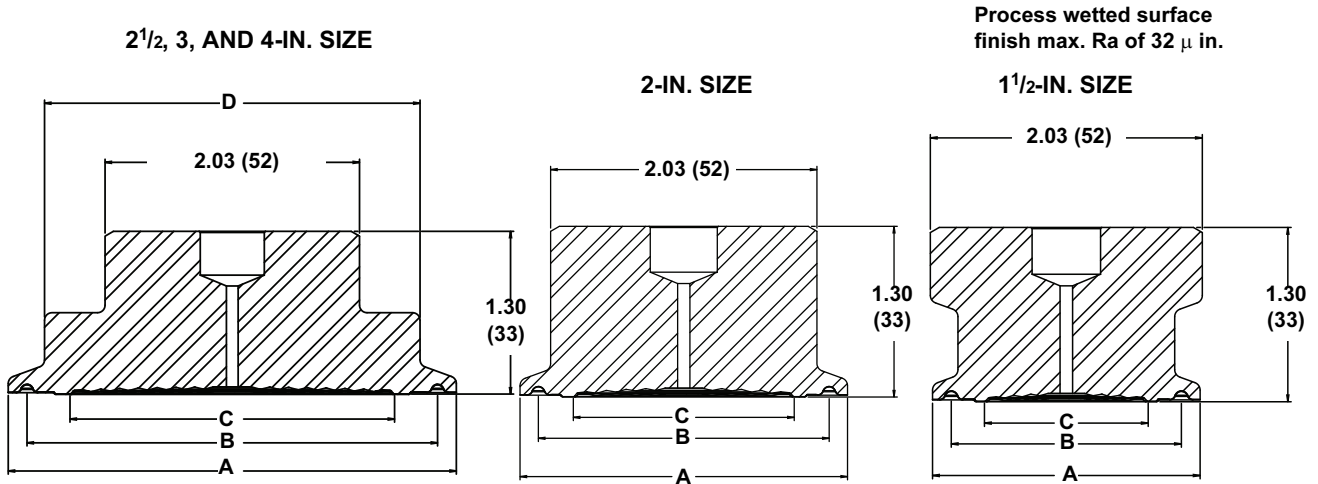
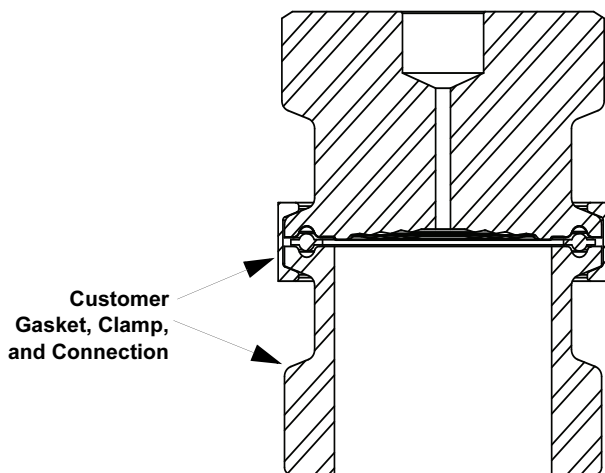


TABLE 43. Tri-Clamp SCW Dimensions<sup>(1)</sup>

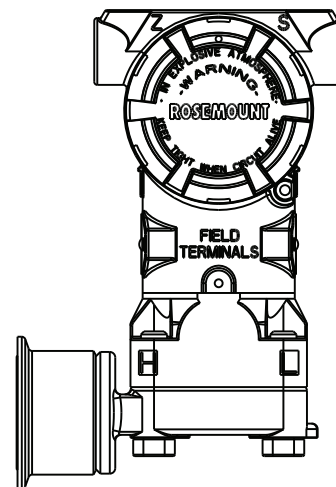
Ordering Code	Size	Outer Diameter (A)	O-Ring Groove Diameter (B)	Diaphragm Diameter (C)	Diameter (D)
30	1.5 (38)	2.00 (50.8)	1.72 (43.7)	1.21 (30.8)	—
50	2.0 (51)	2.50 (63.5)	2.22 (56.4)	1.68 (42.6)	—
60	2.5 (64)	3.04 (77.4)	2.78 (70.6)	2.07 (52.6)	2.50 (64)
70	3.0 (76)	3.58 (90.9)	3.28 (83.3)	2.58 (62.6)	3.00 (76)
90	4.0 (102)	4.68 (119)	4.35 (110)	3.66 (93.0)	4.00 (102)

(1) Dimensions are in inches (millimeters).

### Typical Installation



### Rosemount 3051C with Direct Mount Seal (Connection Codes 93 and 94)



# Product Data Sheet

00813-0100-4016, Rev HA  
January 2008

# Rosemount 1199

TABLE 44. Sanitary *Tri-Clamp* (SCW) Seal Ordering Information

Code		Industry Standard	
S		Sanitary (Conforms to 3-A Standard 74)	
Code		Process Connection Style	
SCW		Sanitary <i>Tri-Clover</i> Style <i>Tri-Clamp</i> <sup>(1)</sup>	
Code		Process Connection Size	
30 <sup>(2)</sup>		1½ in.	
50 <sup>(2)</sup>		2 in.	
60		2½ in.	
70		3 in.	
90		4 in.	
Code		Diaphragm Material	Upper Housing Material
LA		316L SST (Wnr 1.4435)	316L SST
LB		Hastelloy C-276	316L SST
BB <sup>(3)</sup>		Hastelloy C-276	Hastelloy C-276
Code		Lower Housing Flushing or Extension Option	
00		Not Applicable	
Code		Options	
H		20 µin. (0.5 µm) R <sub>a</sub> diaphragm surface finish	
G		15 µin. (0.375 µm) R <sub>a</sub> diaphragm surface finish	
D		10 µin. (0.25 µm) R <sub>a</sub> diaphragm surface finish	
2		High Pressure Ladish Clamp and Buna N Gasket—see Table 45 below for clamp pressure rating (Conforms to 3-A Standard 74)	
3		Buna-N Gasket (Conforms to 3-A Standard 74)	
6		Electropolishing	
P		Non-Sanitary Fill Fluid (Does not conform to 3-A Standard 74)	

(1) Clamp and gasket furnished by user. The maximum working pressure is dependent upon the clamp pressure rating.

(2) Consult an Emerson Process Management representative for use with low calibrated spans.

(3) Not available with option codes H, G, D, or 6.

TABLE 45. High Pressure Ladish Clamp Maximum Working Pressure

Process Connection Size	psi at 70 °F	psi at 250 °F
1½ in.	1,500	1,200
2 in.	1,000	800
2½ in.	1,000	800
3 in.	1,000	800
4 in.	1,000	800