

# Gurmat Geothermal Plant Optimizes Production and Reduces Maintenance with Rosemount Magnetic Flowmeters

## RESULTS

- Reduction of energy losses by 3 000 MWh/year
- Optimized power production
- Reduced maintenance costs

## APPLICATION

Brine circulation in geothermal plant - brine extraction (170 °C, 23 bar) and brine re-injection into the reservoir

## CUSTOMER

Gurmat Electric Generation Co. Inc. geothermal plant in Turkey (47.4 MWe nominal power capacity)

## CHALLENGE

The main operation units of a geothermal plant consists of 3 areas: i) separation of brine/water and steam, ii) electricity production and iii) re-injection of separated and condensed brine/water in the underground reservoir. Control of the brine circulation in the plant, from extraction to re-injection in the reservoir, is crucial as it impacts the overall power plant efficiency. Magmeters are usually used to measure the water/brine flow, both on the hot side - including extraction and separation-, and on the cool re-injection side.

For the hot brine measurement (extracted brine is at 170 °C and 23 bar), Gurmat was looking for magnetic flowmeters that would offer superior reliability while operating close to their maximum temperature limits in order to reduce risk of failure and unplanned shutdowns.

On the re-injection sides of the plant, Gurmat needed a magnetic flowmeter that would provide a precise brine measurement in order to determine an accurate indication of the turbine steam consumption and maximize its throughput. Moreover, an accurate measurement of the re-injected brine indicates when a well is at risk of plugging, allowing Gurmat to judiciously schedule the well cleaning process.



**“The Rosemount magmeters don't need any kind of maintenance”**

**Baybars Dal**

*Electrical and Instrumentation Chief*



*Installed Magnetic Flowmeter in a cooling water application.*

**ROSEMOUNT**

For more information:  
[www.rosemount.com](http://www.rosemount.com)

  
**EMERSON**  
Process Management

## SOLUTION

To achieve those critical measurement points on both the hot and cold brine, Gurmat has installed 25 Rosemount Magmeters. The Rosemount Magmeters have been in operation for more than 5 years and continue to meet Gurmat requirements. "The Rosemount Magmeters don't need any kind of maintenance. We have installed over 25 meters of sizes between 2" and 20" and have experienced a perfect level of reliability of 100%" explained Baybars Dal, Electrical and Instrumentation Chief. "Other supplier magmeters did not guarantee the required reliability when brine temperature was near to the operating temperature limit of the meter. It is known that in similar cases the flowtubes failed only few months after the installation. We use the Rosemount magmeters for those applications and although the brine temperature is only 7 °C below the operating temperature limit of the Rosemount meter, the measurement is reliable" continued Baybars Dal.

Emerson magmeter accuracy helps Gurmat reduce the uncertainty level of their energy losses. The 0.25% flow accuracy and electronics that are compensated across the operating temperature assure the best available installed accuracy. This enables Gurmat to quickly recognize the production losses, reducing total losses due to bad estimation by 3.000MWh/year. Gurmat noted that Emerson magmeters have proven to be the most reliable and accurate solution for this kind of measurement and are capable of keeping the plant efficiency at the target level for the last 5 years with no impact on maintenance costs.

## RESOURCES

### Emerson Process Management Power Generation Industry

<http://www2.emersonprocess.com/en-US/divisions/power-water/Pages/powerwater.aspx>

### Rosemount 8705 Flanged Sensor Magnetic Flowmeter

<http://www2.emersonprocess.com/en-US/brands/rosemount/Flow/Magnetic-Flowmeters/8705-Flanged-Sensor/Pages/index.aspx>

The contents of this publication are presented for information purposes only, and while effort has been made to ensure their accuracy, they are not to be construed as warranties or guarantees, expressed or implied, regarding the products or services described herein or their use or applicability. All sales are governed by our terms and conditions, which can be found at [www.rosemount.com/terms\\_of\\_sale](http://www.rosemount.com/terms_of_sale). We reserve the right to modify or improve the designs or specifications of our products at any time without notice.

The Emerson logo is a trade mark and service mark of Emerson Electric Co. Rosemount and the Rosemount logotype are registered trademarks of Rosemount Inc. PlantWeb is a registered trademark of one of the Emerson Process Management group of companies. All other marks are the property of their respective owners.

**Emerson Process Management  
Rosemount Inc.**  
8200 Market Boulevard  
Chanhassen, MN 55317 USA  
[www.rosemount.com](http://www.rosemount.com)  
T (USA) +1 800 522 6277  
T (International) +1 (303) 527 5200  
F +1 (303) 530 8459

**Emerson Process  
Management Flow B.V.**  
Neonstraat 1  
6718 WX Ede  
The Netherlands  
T +31 (0) 318 495555  
F +31 (0) 318 495556

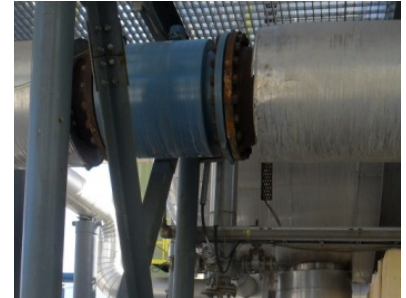
**Emerson FZE**  
P.O. Box 17033  
Jebel Ali Free Zone  
Dubai UAE  
Tel +971 4 811 8100  
Fax +971 4 886 5465  
[FlowCustomerCare.MEA@Emerson.com](mailto:FlowCustomerCare.MEA@Emerson.com)

**Emerson Process Management Asia  
Pacific Private Limited**  
1 Pandan Crescent  
Singapore 128461  
T (65) 6777 8211  
F (65) 6777 0947  
[Enquiries@AP.EmersonProcess.com](mailto:Enquiries@AP.EmersonProcess.com)

**Emerson Process Management Latin America  
Multipark Office Center**  
Turrubares Building, 3rd & 4th floor  
Guachipelin de Escazu, Costa Rica  
T+(506) 2505-6962  
[international.mmcam@emersonprocess.com](mailto:international.mmcam@emersonprocess.com)

**ROSEMOUNT®**

For more information:  
[www.rosemount.com](http://www.rosemount.com)



Installed magnetic flowmeter in a main brine line.



Rosemount 8705 with integral 8732.



**EMERSON™**  
Process Management