

Rosemount Meter Verification Diagnostics Eliminate Calibration Costs, and Decrease Production Delays

RESULTS

- Saved \$4,000 per year in magnetic flowmeter meter verification costs
- Eliminated production delays due to meter verification
- Increased customer confidence in magnetic flowmeter performance

APPLICATION

Pump performance verification

CUSTOMER

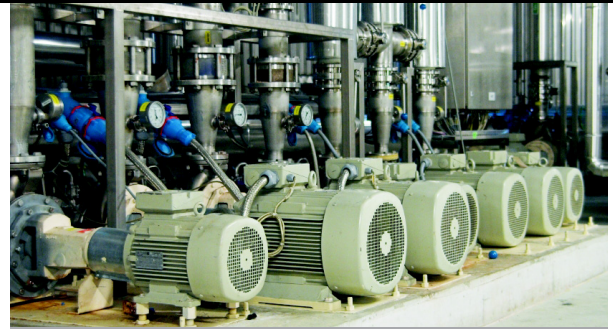
A large pump manufacturer

CHALLENGE

A manufacturer of large pumps is required to verify pump performance as part of their quality assurance process. Before every pump is shipped to a customer, the pump must be certified that it is functioning within design specifications. In order to accurately measure the pump flow rate, various sized magnetic flowmeters are used. Since this is a critical measurement that is used to certify every pump is within specification, the pump manufacturer must also certify that the magnetic flowmeter is measuring within specifications, and that the calibration has not shifted. In order to verify the magnetic flowmeters, each meter is sent to a third party flow lab for re-calibration on an annual basis. This costs approximately \$1000 per meter. The typical turn around time is approximately 4 weeks. The long turnaround time causes production scheduling conflicts and leads to production delays while the meter is out for calibration. Occasionally, the pump manufacturer was unable to ship a pump since the flowmeter required to certify its performance was out for calibration.

SOLUTION

It was recommended that this customer use Rosemount E-Series magnetic flowmeters with 8714 meter verification diagnostic capabilities. Rosemount E-Series transmitters have the capability to perform a full meter verification of the flowtube by taking a "fingerprint" or signature of the flowtube sensor when it is first installed. Running the 8714 Internal Meter Verification will then



Rosemount 8714 meter verification diagnostics certify pump performance, while eliminating meter verification costs.



The Rosemount 8705 Magnetic Flowtube

ROSEMOUNT[®]

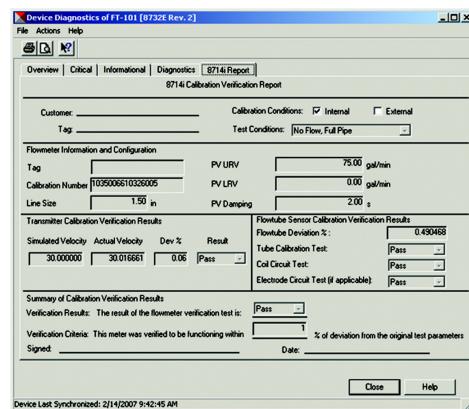
For more information:
www.rosemount.com


EMERSON[™]
Process Management

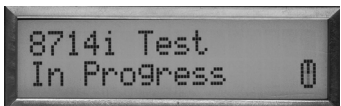


compare the original signature to the current measurements. If values are within user set parameters, the flowmeter is within specification and the verification is complete. A meter verification report can be printed from AMS® Suite: Intelligent Device Manager, or alternatively the calibration values can be taken from the local operator interface or field communicator and written into the report by hand.

The 8714 meter verification diagnostic can be run with the flowmeter operating in a flowing condition, full pipe not flowing, or empty pipe condition eliminating the need to remove the flowmeter from the line.

The 8714 meter verification diagnostic eliminated the need for this customer to remove their flowmeters from the line and send them out to a third party for calibration, saving \$4,000 per year in meter verification costs. Since the 8714 meter verification diagnostic can be run anytime and within minutes, the meter verification diagnostic provides an increased level of confidence that the magnetic flowmeter is operating within specifications, ensuring that each pump has been correctly certified. Previously, the old flowmeters would have only been checked once per year. Since the 8714 meter verification diagnostic can be run without removing the meter from the line, this customer can operate more efficiently by not having to schedule calibrations around their production schedule.



8714 Meter Verification Report in AMS Device Manager

 <p><i>8714 Calibration Verification checks transmitter and flowtube sensor characteristics.</i></p>	 <p><i>Deviation from baseline values are reported.</i></p>	 <p><i>Meter Calibration is verified.</i></p>
---	--	---

RESOURCES

Emerson Process Management Industries

<http://www2.emersonprocess.com/en-US/industries/Pages/AllIndustries.aspx>

Rosemount E-Series Magnetic Flowmeter Transmitters

<http://www2.emersonprocess.com/en-US/brands/rosemount/Flow/Magnetic-Flowmeters/E-Series-Transmitters/Pages/index.aspx>

The contents of this publication are presented for information purposes only, and while effort has been made to ensure their accuracy, they are not to be construed as warranties or guarantees, expressed or implied, regarding the products or services described herein or their use or applicability. All sales are governed by our terms and conditions, which can be found at www.rosemount.com/terms_of_sale. We reserve the right to modify or improve the designs or specifications of our products at any time without notice.

The Emerson logo is a trade mark and service mark of Emerson Electric Co. Rosemount and the Rosemount logotype are registered trademarks of Rosemount Inc. PlantWeb is a registered trademark of one of the Emerson Process Management group of companies. All other marks are the property of their respective owners.

**Emerson Process Management
Rosemount Inc.**
8200 Market Boulevard
Chanhassen, MN 55317 USA
www.rosemount.com
Tel (USA) 800 522 6277
Tel (International) +1 (303) 527 5200
Fax +1 (303) 530 8459

**Emerson Process Management
Flow B.V.**
Neonstraat 1
6718 WX Ede
The Netherlands
T +31 (0) 318 495555
F +31 (0) 318 495556

Emerson FZE
P.O. Box 17033
Jebel Ali Free Zone
Dubai UAE
Tel +971 4 811 8100
Fax +971 4 886 5465

**Emerson Process Management Asia
Pacific Private Limited**
1 Pandan Crescent
Singapore 128461
T (65) 6777 8211
F (65) 6777 0947
Enquiries@AP.EmersonProcess.com

**Emerson Process Management Latin America
Multipark Office Center**
Multipark Office Center
Turrubares Building, 3rd & 4th floor
Guachipelin de Escazu, Costa Rica
T+(506) 2505-6962
international.mmcam@emersonprocess.com

ROSEMOUNT® For more information:
www.rosemount.com

