

# **MON2000 PLUS**

## **Software for Gas Chromatographs**

---

### **Quick Start Guide**

**Applies to Both:**  
**Daniel Danalyzer On-Line Gas Chromatographs**  
**Rosemount Analytical Process Gas Chromatographs**

**Part Number 2-3-9000-743**

**Revision B**  
**JULY 2010**



# MON2000 Software for Gas Chromatographs User Manual

## NOTICE

DANIEL MEASUREMENT AND CONTROL, INC. AND ROSEMOUNT ANALYTICAL, INC. (COLLECTIVELY, "SELLER") SHALL NOT BE LIABLE FOR TECHNICAL OR EDITORIAL ERRORS IN THIS MANUAL OR OMISSIONS FROM THIS MANUAL. SELLER MAKES NO WARRANTIES, EXPRESSED OR IMPLIED, INCLUDING THE IMPLIED WARRANTIES OF MERCHANTABILITY AND FITNESS FOR A PARTICULAR PURPOSE WITH RESPECT TO THIS MANUAL AND, IN NO EVENT, SHALL SELLER BE LIABLE FOR ANY SPECIAL OR CONSEQUENTIAL DAMAGES INCLUDING, BUT NOT LIMITED TO, LOSS OF PRODUCTION, LOSS OF PROFITS, ETC.

PRODUCT NAMES USED HEREIN ARE FOR MANUFACTURER OR SUPPLIER IDENTIFICATION ONLY AND MAY BE TRADEMARKS/REGISTERED TRADEMARKS OF THESE COMPANIES.

THE CONTENTS OF THIS PUBLICATION ARE PRESENTED FOR INFORMATIONAL PURPOSES ONLY, AND WHILE EVERY EFFORT HAS BEEN MADE TO ENSURE THEIR ACCURACY, THEY ARE NOT TO BE CONSTRUED AS WARRANTIES OR GUARANTEES, EXPRESSED OR IMPLIED, REGARDING THE PRODUCTS OR SERVICES DESCRIBED HEREIN OR THEIR USE OR APPLICABILITY. WE RESERVE THE RIGHT TO MODIFY OR IMPROVE THE DESIGNS OR SPECIFICATIONS OF SUCH PRODUCTS AT ANY TIME.

SELLER DOES NOT ASSUME RESPONSIBILITY FOR THE SELECTION, USE OR MAINTENANCE OF ANY PRODUCT. RESPONSIBILITY FOR PROPER SELECTION, USE AND MAINTENANCE OF ANY SELLER PRODUCT REMAINS SOLELY WITH THE PURCHASER AND END-USER.

DANIEL AND THE DANIEL LOGO ARE REGISTERED TRADEMARKS OF DANIEL INDUSTRIES, INC. THE ROSEMOUNT AND ROSEMOUNT ANALYTICAL LOGO ARE REGISTERED TRADEMARKS OF ROSEMOUNT ANALYTICAL, INC. THE EMERSON LOGO IS A TRADEMARK AND SERVICE MARK OF EMERSON ELECTRIC CO.

COPYRIGHT © 2010 BY DANIEL MEASUREMENT AND CONTROL, INC., HOUSTON, TEXAS,  
U.S.A.

All rights reserved. No part of this work may be reproduced or copied in any form or by any means - graphic, electronic, or mechanical – without first receiving the written permission of Daniel Measurement and Control, Inc. Houston, Texas, U.S.A.

## Table of Contents

1. Introduction .....	1
2. System Requirements .....	2
3. Installing the Software .....	4
4. Transferring Your License to Another PC .....	9

### 1. INTRODUCTION

Welcome to the *MON2000 PLUS Quick Start Guide*.

The purpose of this guide is to help you get MON2000 PLUS up and running quickly and easily. It is assumed that all of the system requirements for the proper installation and performance of the software have been met. For more detailed information, see the *MON2000 Software for Gas Chromatographs User Manual*.



**This manual assumes that you are familiar with Microsoft® Windows®, and that you can point and click with a mouse, or use a keyboard.**



**You must be logged in to Microsoft® Windows® as an administrator to install this software.**

## 2. SYSTEM REQUIREMENTS

To achieve maximum performance when running MON2000 PLUS, ensure your PC system contains the following hardware.

- PC with a 486/90MHz or higher processor (Pentium/100MHz or higher recommended) running any of the following:
  - Windows® 95 (service pack 1 or better) or later equipment and Microsoft® Windows® operating system.

### NOTICE

Microsoft Internet Explorer 5.0 (or later) is required to view spreadsheets or reports saved in HTML format.

### NOTICE

If running Windows® 95 with the 2350A optional Ethernet card, the user must download Socket 2 from [www.microsoft.com/windows95/downloads](http://www.microsoft.com/windows95/downloads) to utilize MON2000 PLUS's ethernet feature.

- Windows® 98 version 1 or later
- Windows® 2000 version 1 or later
- Windows® XP version 1 or later (see note for system requirements)
- Windows® NT Server version 4 (service pack 3 or later)

**NOTICE**

Use the Settings > Control Panel > System/> General Page menu to check the system version number.

For Windows® 95, the version number should be 4.00.950A/B or later.

For Windows® 98 or Windows® 2000, the version number should be 1 or later.

To use Windows® XP you need:

- Computer/Processor PC with 300 MHz or higher processor clock speed recommended;
- 233 MHz minimum required (single or dual processor system)
- \*Intel® Pentium®/Celeron™ family, or AMD-K6®/AMD Athlon™/AMD Duron™ family, or compatible processor recommended.
- Memory: 128 MB of RAM or higher recommended (64 MB minimum supported; may limit performance and some features).
- Hard Disk Minimum: 1.5 GB of available hard disk space.

For Windows® NT4, the version number should be 4.00.1381 or later.

- 16 megabytes (MB) of RAM (32 MB or higher recommended)
- 5 MB of free hard disk space
- Super VGA monitor with 800x600 resolution
- free serial port for remote/local connection to gas chromatograph (for online operations)
- free parallel port for connection to printer
- Windows® -compatible modem (for remote connection only)
- Ethernet connection (when using Ethernet networking)

### 3. INSTALLING THE SOFTWARE

Installing MON2000 PLUS is a three-step process. MON2000 PLUS must be installed first, followed by the installation of the Crypkey License Service. After obtaining a Site Key, you can configure your license to get unlimited access to MON2000 PLUS.

#### 3.1 Installing MON2000 PLUS

MON2000 PLUS can be installed from a CD-ROM.

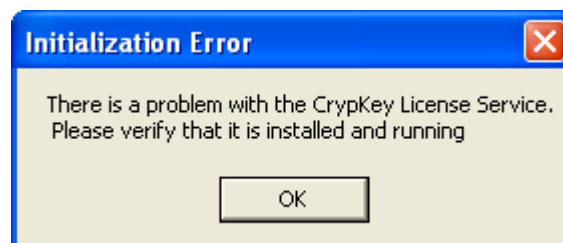
To install MON2000 PLUS, do the following:

1. Place the MON2000 PLUS CD in your CD-ROM drive.
2. Open Windows® Explorer® and access the CD-ROM drive.
3. Double-click the setup.exe file. The Installation Wizard begins. Follow the instructions provided on each screen.

Upon successful installation, Windows® automatically creates a MON2000 PLUS icon on your desktop.

#### 3.2 Installing the CrypKey License Service

The CrypKey License Service must be installed on all NT-based systems. If you try to run MON2000 PLUS before installing the CrypKey License Service, an error will result.



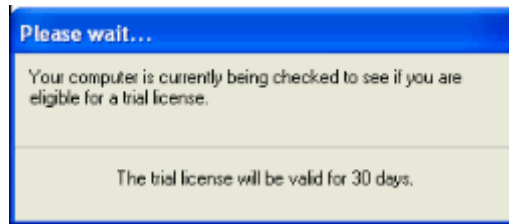
To install the CrypKey License Service, do the following:

1. After installing MON2000 PLUS, the program folder should display automatically; if it doesn't, open Windows® Explorer® and access the MON2000 PLUS program folder.
2. Double-click the **SETUPEX.EXE** file.

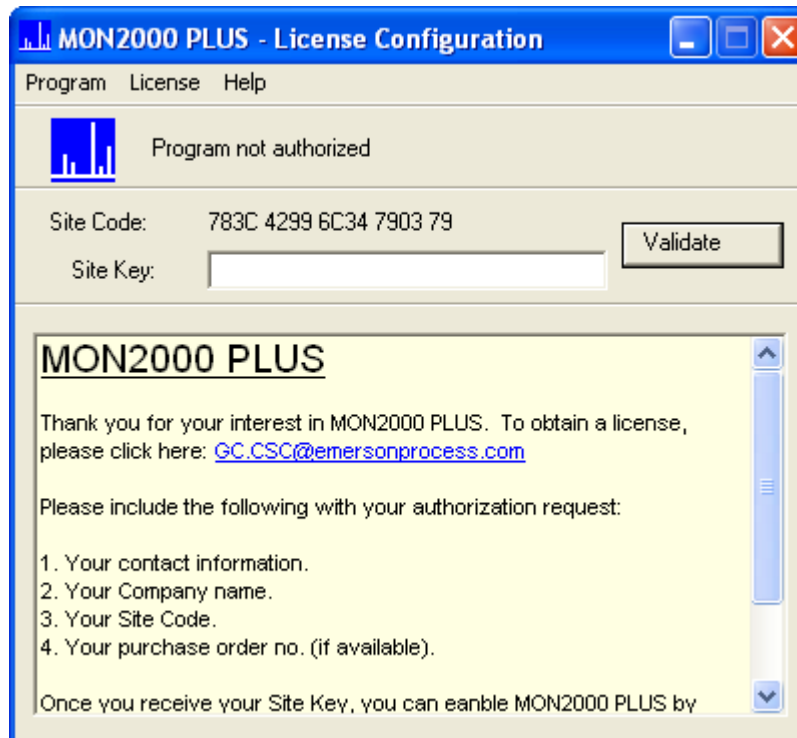
MON2000 PLUS can now be started. You have 30 days to evaluate the application. Once the trial period expires, you must obtain a license to continue to use MON2000 PLUS.

### 3.3 Configuring Your MON2000 PLUS License

MON2000 PLUS displays a startup screen that informs you that you have 30 days to run the software.



If you have a license key and wish to enter it before the trial period ends, press ENTER while the startup screen is showing. The License Configuration screen displays. At this point you do not have to enter the site key; you can close this window and MON2000 PLUS will continue to run in trial mode.

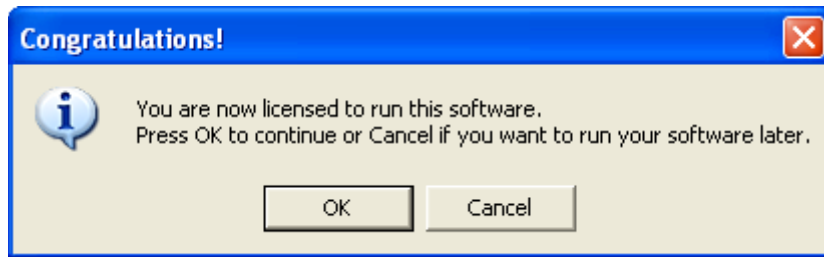


After the trial period ends, the License Configuration screen displays automatically, and you must enter a site key before you can continue to use MON2000 PLUS.

To configure your MON2000 PLUS license, do the following:

1. Contact **GC.CSC@emersonprocess.com** to purchase a software license. Provide your contact information, company name, your Site Code, and, if available, your purchase order number. You will receive a Site Key.
2. Enter the key into the **Site Key** field on the License Configuration screen.
3. Press **Validate**.





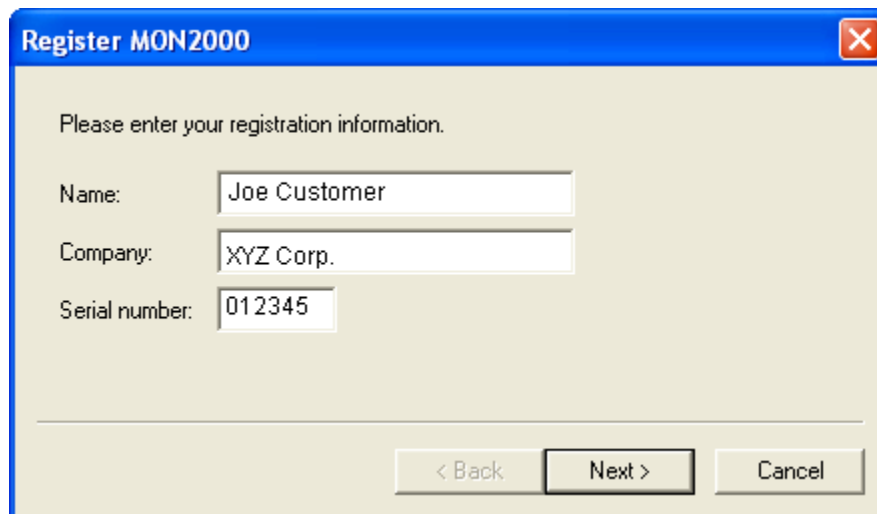
You now have unlimited use of MON2000 PLUS.

### 3.4 Registering MON2000 PLUS

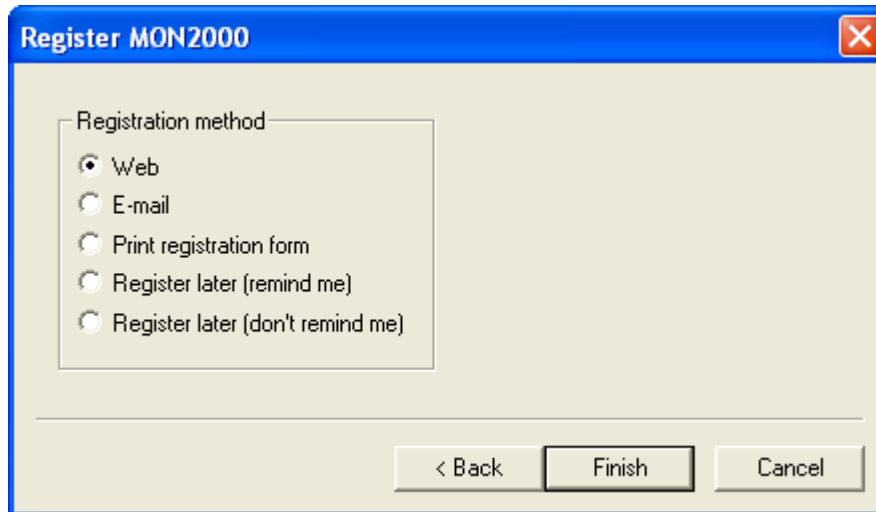
Upon logging on the first time, the Register MON2000 wizard will appear. Take a few minutes to register your software. Registration entitles you to receive information about free updates and related products.

To register MON2000 PLUS, do the following:

1. Select **File > Register MON2000...** to start the registration wizard. If the information in the **Name** or **Company** fields is wrong, then enter the correct information.

A Windows-style dialog box titled "Register MON2000". It has a blue header bar with a close button (X) on the right. The main area has a light beige background and contains the text "Please enter your registration information." Below this, there are three input fields: "Name:" with the value "Joe Customer", "Company:" with the value "XYZ Corp.", and "Serial number:" with the value "012345". At the bottom, there are three buttons: "< Back", "Next >", and "Cancel".

2. Click **Next**.



3. Select the appropriate registration method. You must have an active internet connect to register via the Daniel Website.
4. Click **Finsh**.

If you selected *Web* as your registration method, you will be taken via your default Web browser to the Daniel Software Registration Page.

If you selected *E-mail* as your registration method, your default email application will start, with a new message pre-filled with the relevant information.

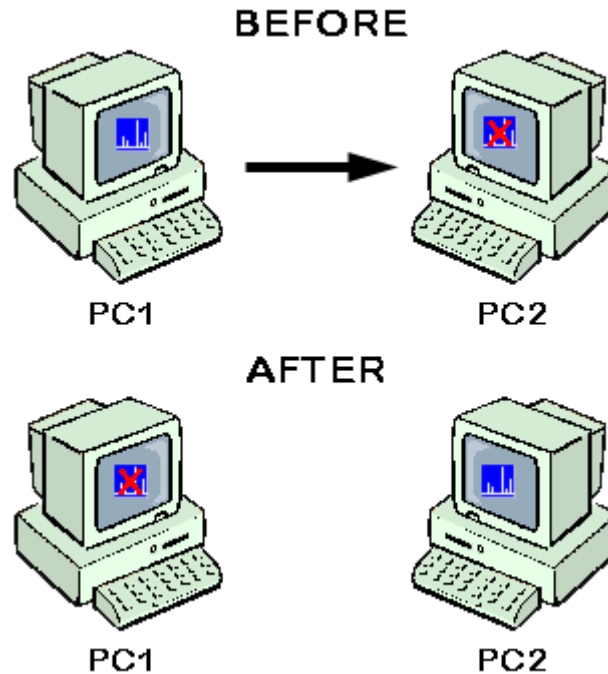
If you selected *Print registration form* as your registration method, the form will be printed via your default printer. Mail or fax this form to complete the registration.

If you selected *Register later (remind me)* as your registration method, the registration wizard will close and will automatically start again the next time you start MON2000 PLUS.

If you selected *Register later (don't remind me)* as your registration method, the wizard will close and you can restart it at any time by selecting **File > Register MON2000....**

#### 4. TRANSFERRING YOUR LICENSE TO ANOTHER PC

This procedure transfers an license from a computer (**PC1**) installed with an authorized version of MON2000 PLUS to a computer (**PC2**) installed with a trial version of MON2000 PLUS. The version of MON2000 PLUS on PC1 will no longer be authorized.



### NOTICE

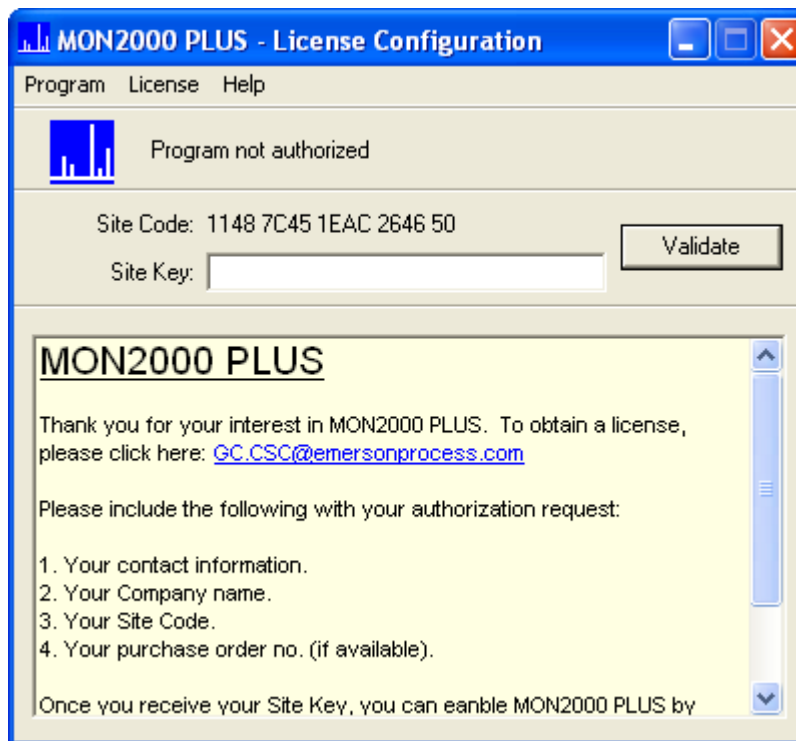
A trial version of MON2000 PLUS must be installed on the target computer (PC2) before a valid license can be transferred to it. To transfer an unlimited license to this machine before the 30-day trial license has expired, you must first select the *Kill License* option from the *License* menu on the *License Configuration* screen to kill the 30-day trial license. This will enable the *Transfer in from another Computer* option.

**DO THIS ONLY IF YOU INTEND TO TRANSFER A VALID LICENSE TO THIS COMPUTER.** The Kill License process cannot be reversed.

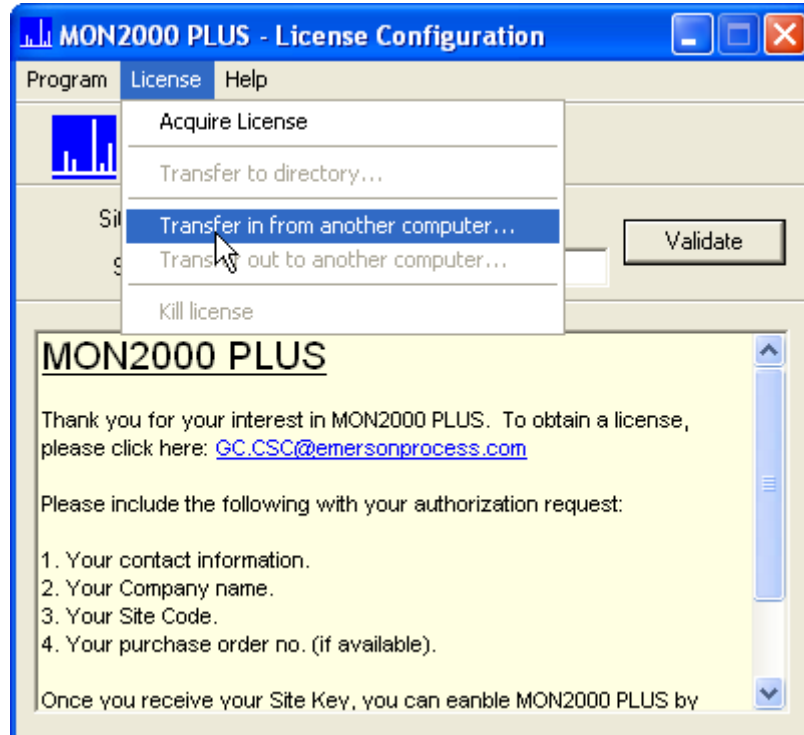
It is recommended that you use a removable storage medium such as a floppy disk or a flash drive to physically transfer the license file from one computer to the other.

To transfer the license, do the following:

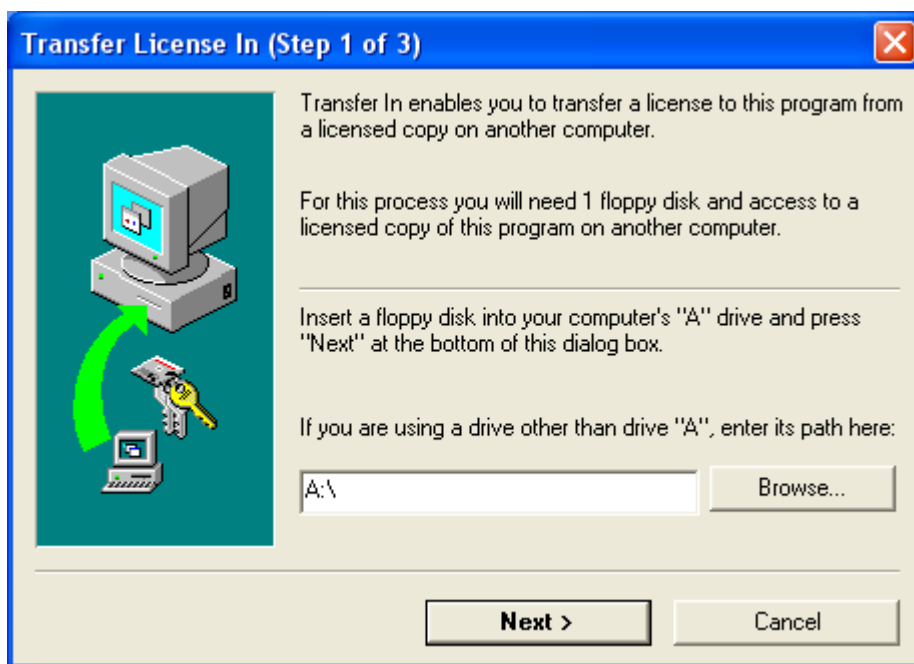
1. Insert the removable storage medium into the appropriate slot on **PC2**.
2. Start MON2000 PLUS on **PC2**. The License Configuration screen displays.



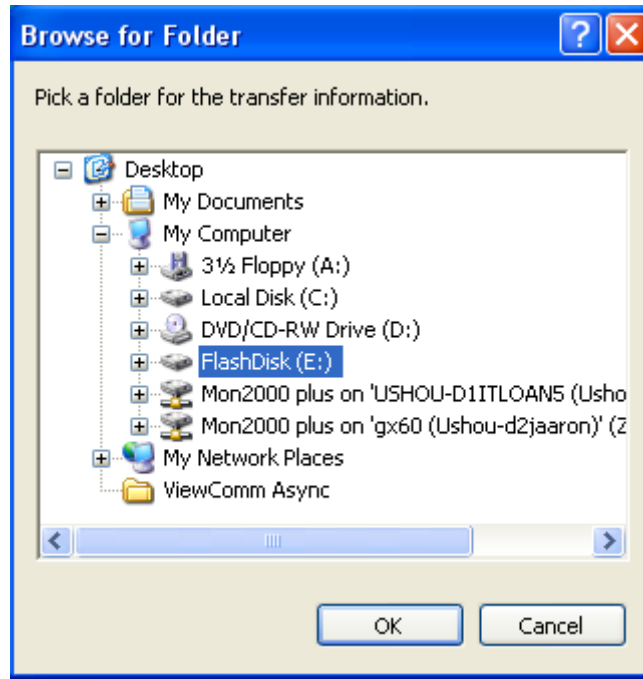
3. From the *License* menu, select **Transfer in from another computer**.

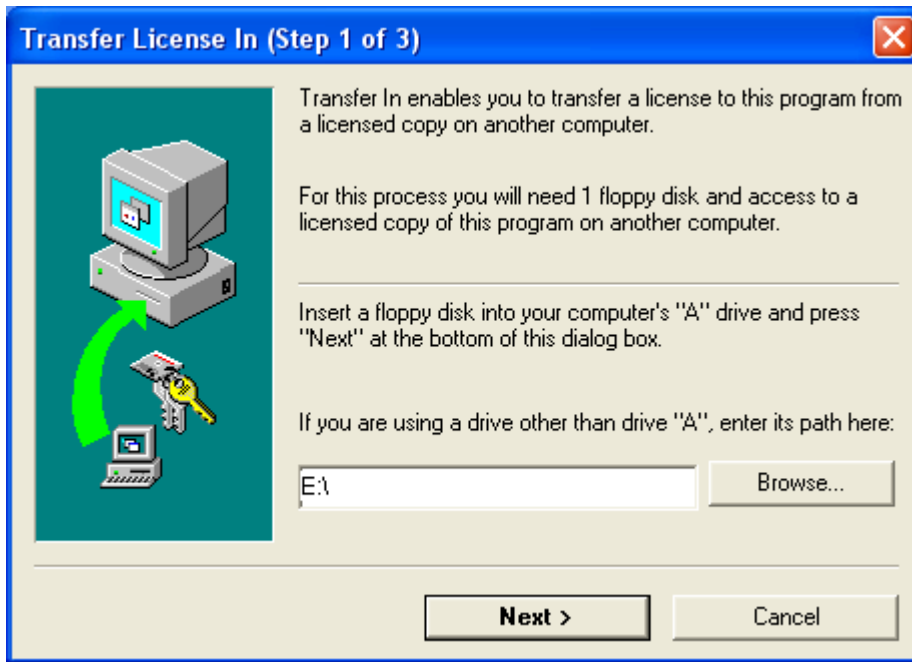


The Transfer License In (Step 1 of 3) screen displays.

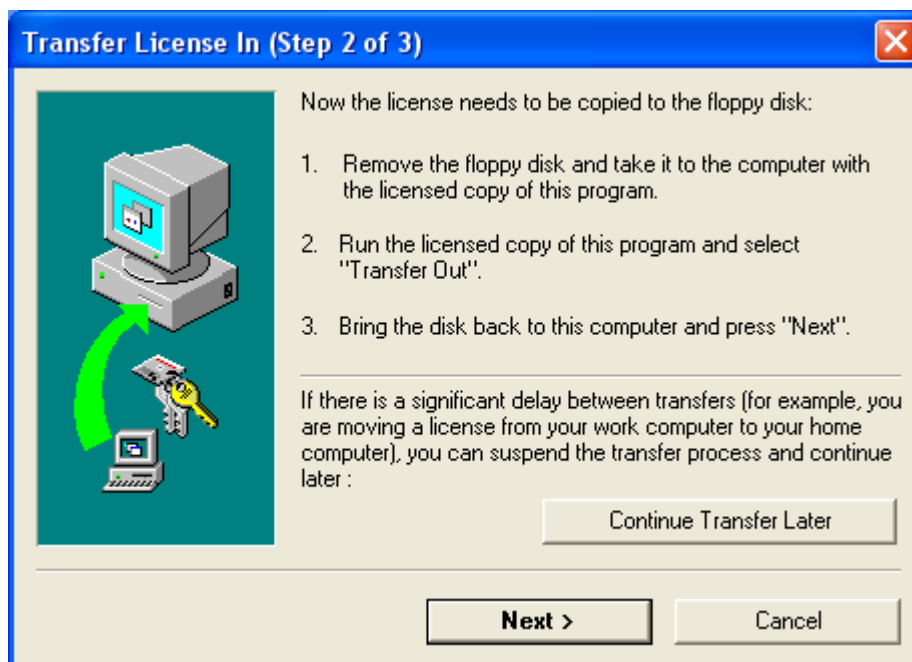


4. Click **Browse** to select a disk path to the removeable storage medium that holds the license file. Click **OK** to accept your selection.



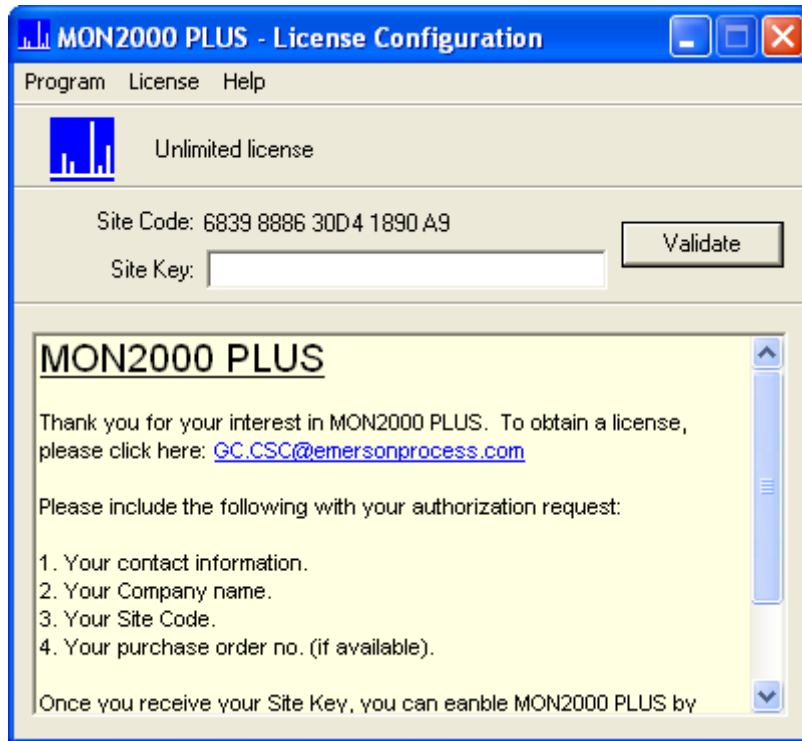
5. Click **Next**.

The Transfer License In (Step 2 of 3) screen displays.

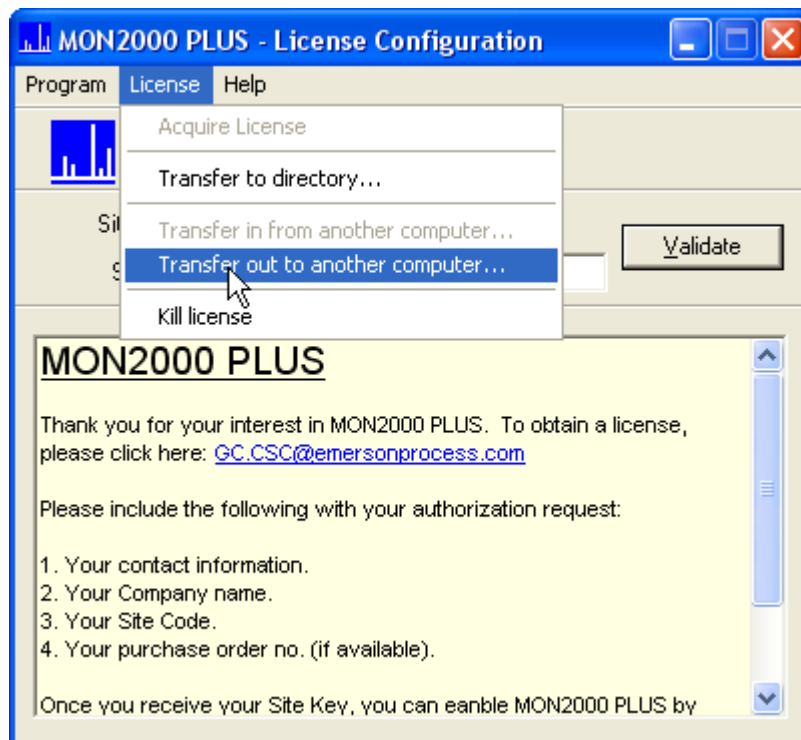




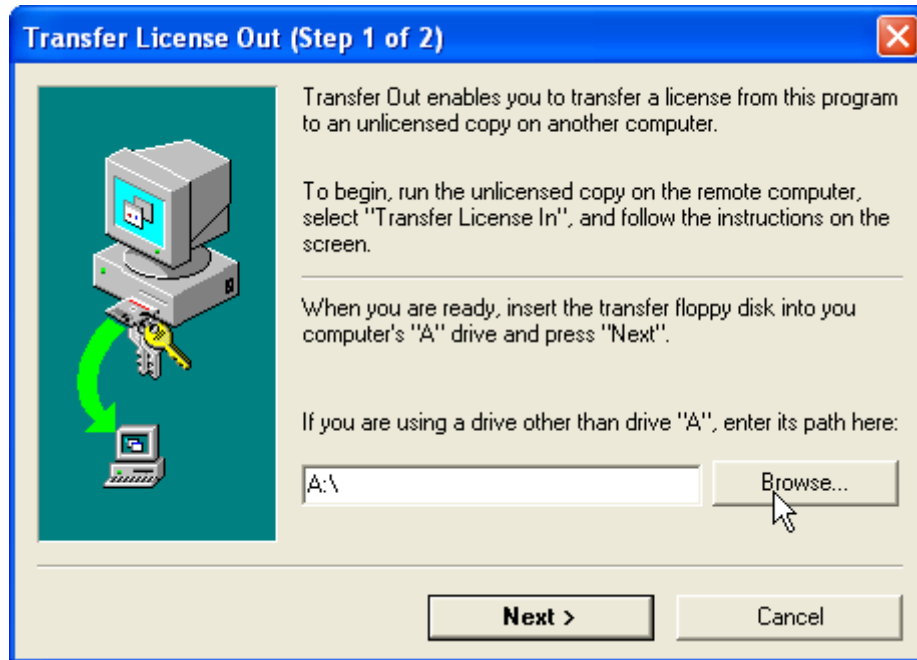
6. Remove the removable storage medium from **PC2** and insert it into **PC1**.
7. Launch MON2000 PLUS on **PC1**. When the startup screen displays, press **Enter**. The License Configuration screen displays with the message *Unlimited license*.



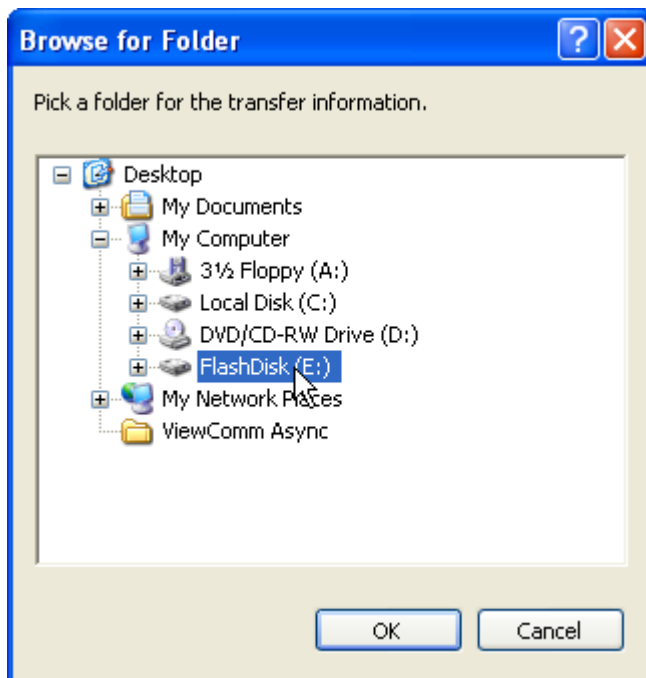
8. From the *License* menu of the License Configuration screen, select **Transfer out to another computer**.



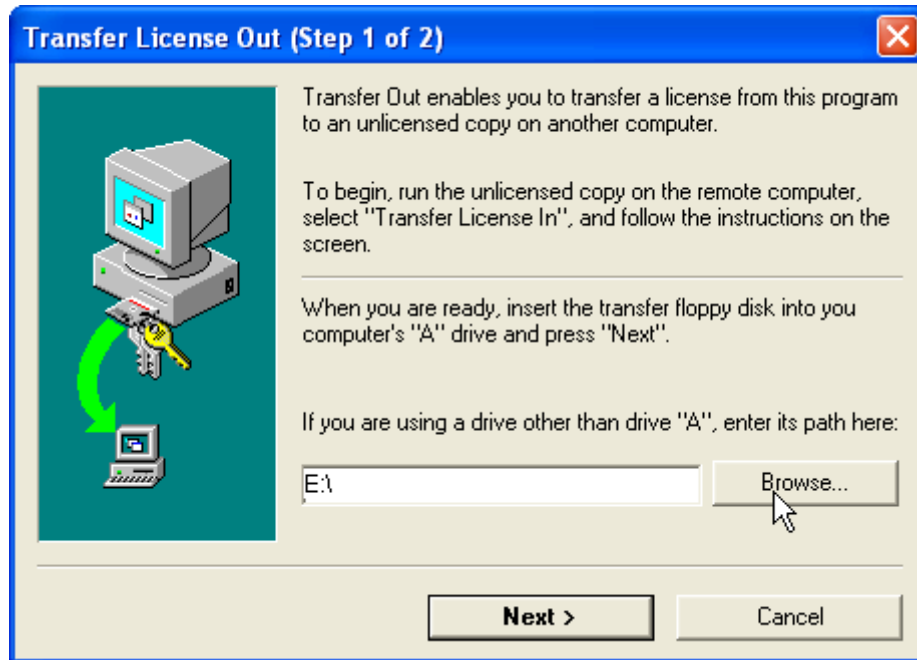
The Transfer License Out (Step 1 of 2) screen displays.



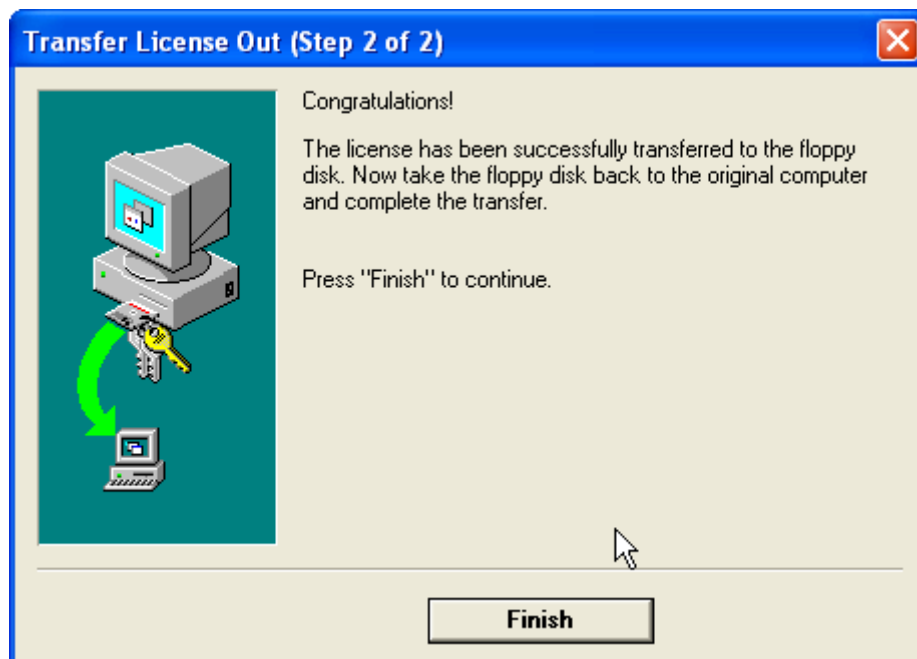
9. Click **Browse** to select a disk path to the removeable storage medium that holds the license file. Click **OK** to accept your selection.



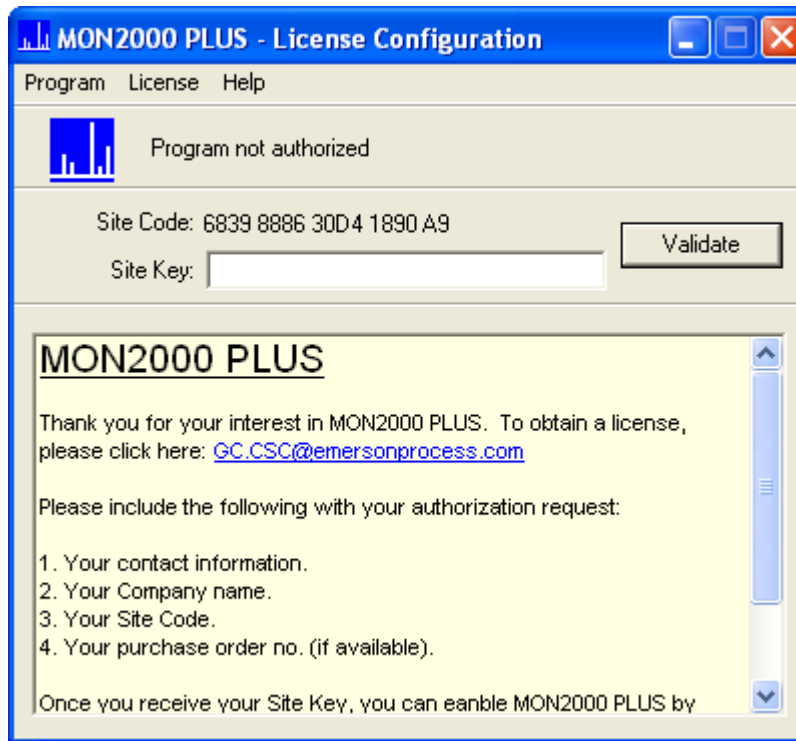
10. Click **Next**.



The Transfer License Out (Step 2 of 2) screen displays.

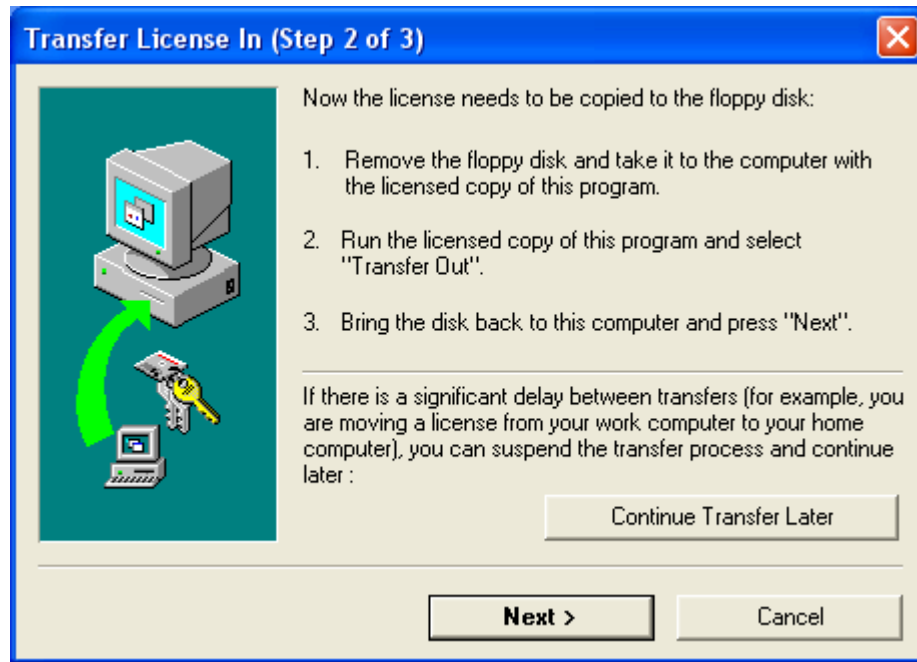


11. Click **Finish**. MON2000 PLUS on **PC1** is no longer authorized.



12. Remove the removable storage medium from **PC1** and reinsert it to **PC2**.

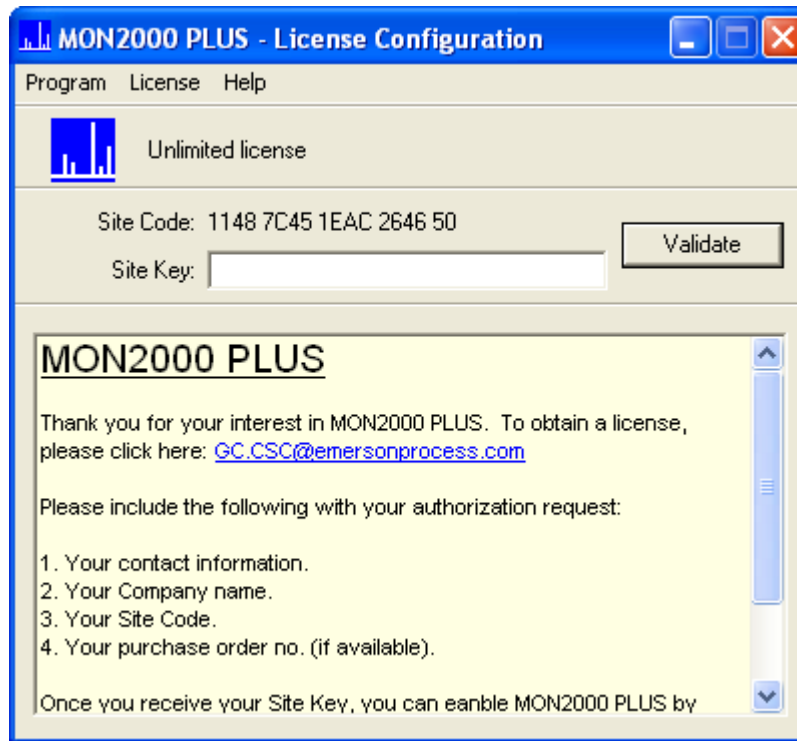
13. On **PC2**, click **Next** on the Transfer License In (Step 2 of 3) screen.



The Transfer License In (Step 3 of 3) screen displays.



14. Click **Finish**. The License Configuration screen displays.



MON2000 PLUS is now authorized for unlimited use on the new computer, **PC2**.



## WARRANTY CLAIM PROCEDURES

To make a warranty claim, you, the Purchaser, must:

1. Provide Daniel Measurement and Control, Inc. or Rosemount Analytical, Inc. with proof of the Date of Purchase and proof of the Date of Shipment of the product in question.
2. Return the product to Daniel Measurement Services (DMS) within 12 months of the date of original shipment of the product, or within 18 months of the date of original shipment of the product to destinations outside of the United States. The Purchaser must prepay any shipping charges. In addition, the Purchaser is responsible for insuring any product shipped for return, and assumes the risk of loss of the product during shipment.
3. To obtain warranty service or to locate the nearest DMS office, sales office, or service center, call (713) 827-6314, fax a request to (713) 827-6312, or write to:

Daniel Measurement Services  
11100 Brittmore Park Drive  
Houston, Texas 77041

You can also contact DMS via [www.emersonprocess.com/daniel](http://www.emersonprocess.com/daniel).

4. When contacting DMS for product service, the Purchaser is asked to provide information as indicated on the following page entitled "Customer Repair Report".
5. For product returns from locations outside the United States, it will be necessary for you to obtain the import consignment address so that DMS's customs broker can handle the importation with the U.S. Customs Service.
6. DMS offers both on call and contract maintenance service designed to afford single source responsibility for all its products.
7. DMS reserves the right to make changes at any time to any product to improve its design and to insure the best available product.

*This page is intentionally left blank.*

## CUSTOMER REPAIR REPORT

FOR SERVICE, COMPLETE THIS FORM, AND RETURN IT ALONG WITH THE AFFECTED EQUIPMENT TO CUSTOMER SERVICE AT THE ADDRESS INDICATED BELOW.

COMPANY NAME: \_\_\_\_\_

TECHNICAL CONTACT: \_\_\_\_\_ PHONE: \_\_\_\_\_

REPAIR P. O. #: \_\_\_\_\_ IF WARRANTY, UNIT S/N: \_\_\_\_\_

INVOICE ADDRESS: \_\_\_\_\_

\_\_\_\_\_

\_\_\_\_\_

SHIPPING ADDRESS: \_\_\_\_\_

\_\_\_\_\_

RETURN SHIPPING METHOD: \_\_\_\_\_

EQUIPMENT MODEL #: \_\_\_\_\_ S/N: \_\_\_\_\_ FAILURE DATE: \_\_\_\_\_

DESCRIPTION OF PROBLEM: \_\_\_\_\_

\_\_\_\_\_

\_\_\_\_\_

WHAT WAS HAPPENING AT TIME OF FAILURE? \_\_\_\_\_

\_\_\_\_\_

ADDITIONAL COMMENTS: \_\_\_\_\_

\_\_\_\_\_

\_\_\_\_\_

REPORT PREPARED BY: \_\_\_\_\_ TITLE: \_\_\_\_\_

IF YOU REQUIRE TECHNICAL ASSISTANCE, PLEASE FAX OR WRITE THE CUSTOMER SERVICE DEPARTMENT AT:

DANIEL MEASUREMENT SERVICES  
DIVISION OF EMERSON PROCESS MANAGEMENT  
ATTN: CUSTOMER SERVICE  
11100 BRITTMOORE PARK DRIVE  
HOUSTON, TEXAS 77041

PHONE: (713) 827-6314  
FAX: (713) 827-6312

**FOR FASTEST SERVICE CONTACT DANIEL MEASUREMENT SERVICES VIA OUR WEBSITE:  
[www.emersonprocess.com/daniel](http://www.emersonprocess.com/daniel)**



*This page is intentionally left blank.*

*Daniel Measurement and Control, Inc., Daniel Measurement Services, Inc., and Rosemount Analytical Inc., Divisions of Emerson Process Management, reserves the right to make changes to any of its products or services at any time without prior notification in order to improve that product or service and to supply the best product or service possible.*

[www.emersonprocess.com](http://www.emersonprocess.com)

