

Serial Communication Cards

The Serial Communication Cards are part of a family of communication interfaces that mount in a ROC300-Series Remote Operations Controller or in a FloBoss™ 407 Flow Manager. The cards provide serial communications between a ROC or FloBoss and other devices.

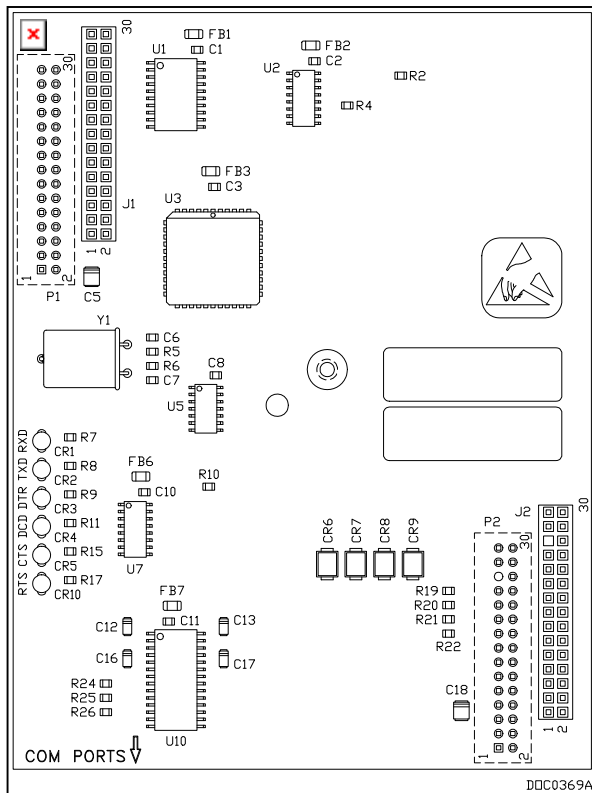
Two types of serial cards are available:

- EIA-232D (RS-232D) card for asynchronous EIA-232 serial communications over twisted-pair lines of up to 50 feet in length.
- ◆ EIA-422/485 (RS-422/485) card for asynchronous EIA-422 or EIA-485 serial communications over twisted-pair lines of up to 4000 feet in length.

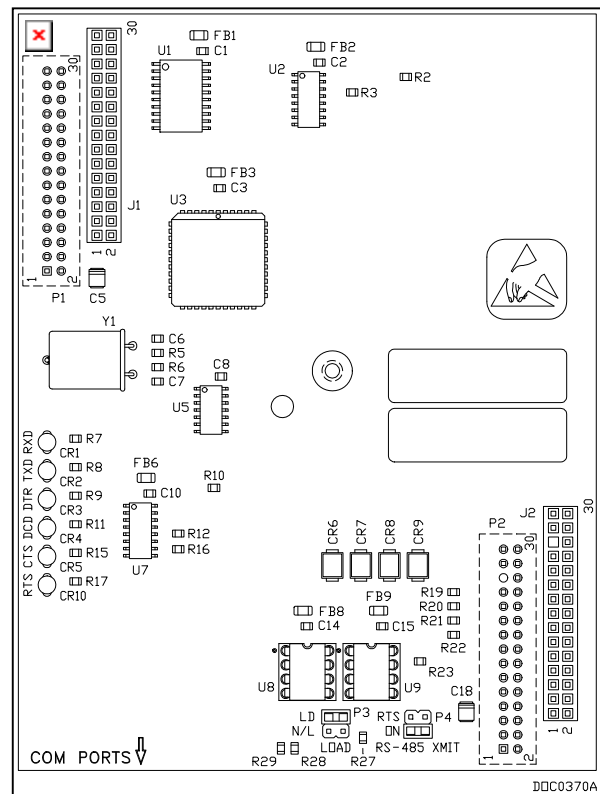
Both types of serial cards have LED indicators for the various communication signals.

One communication card can be installed in a ROC306, ROC312, or FloBoss 407. For a ROC306 or ROC312, the communication card plugs into the main board, which electrically connects it to the 9-pin, D-shell connector (labeled COMM) on the front of the ROC. For a FloBoss 407, the card plugs into the termination board, which connects it to a 9-position terminal block.

Up to two communication cards (serial or modem) in any combination can be installed in a ROC364. For more information on modem cards, see Specification Sheet 2:COM2. The first communication card plugs into the main board, and the second card, if used, plugs “piggy-back” onto the first card. Each card connects electrically to one of two 9-pin, D-shell connectors (labeled COM1 and COM2) located on the front of the ROC364.



EIA-232 Communications Card



EIA-422/485 Communications Card

Specifications

EIA-232D CARD

Meets EIA-232 standard for single-ended data transmission over distances of up to 15 m (50 feet).

Data Rate: Selectable from 300 to 9600 bps.

Format: Asynchronous, 7 or 8-bit (software selectable) with full handshaking.

Parity: None, odd, or even (software selectable).

EIA-422/485 CARD

Meets EIA-422 and EIA-485 standard for differential data transmission over distances of up to 1220 m (4000 feet). As many as 10 devices can be connected on an EIA-422 bus; as many as 32 devices can be connected together on an EIA-485 bus.

Data Rate: Selectable from 300 to 9600 bps.

Format: Asynchronous, 7 or 8-bit (software selectable).

Parity: None, odd, or even (software selectable).

Termination Load: 140 Ω , jumper selectable.

LED INDICATORS

Individual LEDs for RXD, TXD, DTR, DCD, CTS, and RTS signals (not all apply to EIA-422/485 communications).

POWER REQUIREMENTS

4.75 to 5.25 V dc, 0.15 W maximum (supplied by ROC/FloBoss).

ENVIRONMENTAL

Same as the ROC or FloBoss in which the card is installed. Refer to the respective ROC or FloBoss specifications sheet.

DIMENSIONS

25 mm H by 103 mm W by 135 mm L (1 in. H by 4.05 in. W by 5.3 in. L).

WEIGHT

80 g (3 oz) nominal.

APPROVALS

Approved by CSA for hazardous locations Class I, Division 2, Groups A, B, C, and D.

Bristol, Inc., Bristol Babcock Ltd, Bristol Canada, BBI SA de CV and the Flow Computer Division, are wholly owned subsidiaries of Emerson Electric Co. doing business as Remote Automation Solutions ("RAS"), a division of Emerson Process Management. FloBoss, ROCLINK, Bristol, Bristol Babcock, ControlWave, TeleFlow and Helicoid are trademarks of RAS. AMS, PlantWeb and the PlantWeb logo are marks of Emerson Electric Co. The Emerson logo is a trademark and service mark of the Emerson Electric Co. All other marks are property of their respective owners.

The contents of this publication are presented for informational purposes only. While every effort has been made to ensure informational accuracy, they are not to be construed as warranties or guarantees, express or implied, regarding the products or services described herein or their use or applicability. RAS reserves the right to modify or improve the designs or specifications of such products at any time without notice. All sales are governed by RAS' terms and conditions which are available upon request. RAS does not assume responsibility for the selection, use or maintenance of any product. Responsibility for proper selection, use and maintenance of any RAS product remains solely with the purchaser and end-user.

Emerson Process Management

Remote Automation Solutions

Marshalltown, IA 50158 U.S.A.

Houston, TX 77041 U.S.A

Pickering, North Yorkshire UK Y018 7JA

