

# Slow Pulse Input Source and Isolated Modules

The Slow Pulse Input Source and Slow Pulse Input Isolated Modules plug into a ROC 300-Series Remote Operations Controller, or a FloBoss™ 407 Flow Manager, and count the changes in the status of relays, solid-state switches, or other two-state devices. Each module accommodates one pulse input.

The modules provide an LED to show when the input is active and use a scaling resistor for scaling the input range. Functions supported (for example, raw pulse accumulation, rate in EUs, today's total in EUs) are controlled by the ROC or FloBoss firmware.

The source module provides a source voltage for dry relay contacts or for an open-collector solid-state switch. The isolated module accepts an external voltage from a powered two-state device, while maintaining electrical isolation from the ROC or FloBoss power supplies.

Connections between the modules and field wiring are made through separate terminal blocks, which plug into the ROC or FloBoss. This facilitates removal and replacement of modules without disconnecting field wiring.

## Source Module Specifications

### FIELD WIRING TERMINALS

- A: Not used
- B: Input/source voltage
- C: Common

### INPUT

- Type:** Contact sense.
- Maximum Input Signal:** 10Hz.
- Range:** Inactive; 0 to 0.5 mA. Active; 2 to 9 mA.
- Source Voltage:** 11 to 30 V dc.
- Source Current:** Determined by source voltage (Vs), loop resistance (RI), and scaling resistor (Rs):  

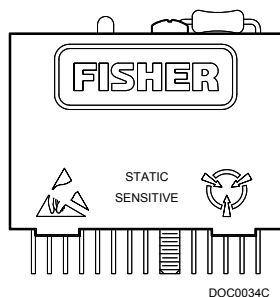
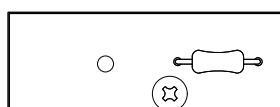
$$I = (Vs - 1)/(3.3K + RI + Rs)$$

### POWER REQUIREMENTS

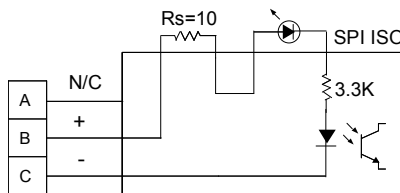
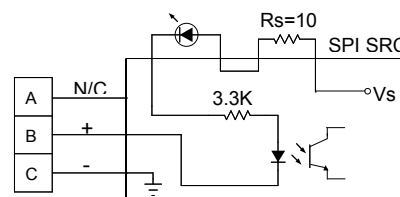
- Source Input:** 11 to 30 V dc, 9 mA maximum from ROC power supply or I/O converter card.
- Module:** 4.9 to 5.1 V dc, 1 mA maximum (supplied by ROC).

### INPUT ISOLATION

Not isolated. Terminal C tied to power supply common.



Slow Pulse Input Module



Simplified Schematics

**Isolated Module Specifications**

<p><b>FIELD WIRING TERMINALS</b></p> <p><b>A:</b> Not used <b>B:</b> Positive input <b>C:</b> Negative input</p> <p><b>INPUT</b></p> <p><b>Type:</b> Two-state current sense. <b>Range:</b> Inactive: 0 to 0.5 mA. Active: 2 to 9 mA. <b>Current:</b> Determined by input voltage (Vi), loop resistance (RI), and scaling resistor (Rs): <math>I = (V_i - 1)/(3.3K + R_I + R_s)</math> <b>Maximum Voltage:</b> 30 V dc forward, 5 V dc reverse.</p>	<p><b>POWER REQUIREMENTS</b></p> <p>4.9 to 5.1 V dc, 1 mA maximum (supplied by ROC).</p> <p><b>INPUT ISOLATION</b></p> <p><b>Insulation:</b> 100 MΩ minimum, input to output, and input or output to case. <b>Voltage:</b> 4,000 V ac (RMS) minimum, input to output. <b>Capacitance:</b> 6 pF typical, input to output.</p>
---	--

**Common Specifications**

<p><b>INPUT</b></p> <p><b>Loop Resistance (RI):</b> 4.5 kilohm maximum for best efficiency. <b>Scaling Resistor (Rs):</b> 10 ohm supplied (see equation above to compute other value). <b>Frequency Response:</b> 0 to 10 Hz maximum, 50% duty cycle. <b>Input Filter (Debounce):</b> 50 milliseconds.</p> <p><b>VIBRATION</b></p> <p>20 Gs peak or 0.06 in. double amplitude, 10 to 2,000 Hz, per MIL-STD-202 method 204, condition F.</p> <p><b>MECHANICAL SHOCK</b></p> <p>1500 Gs 0.5 ms half sine, per MIL-STD-202 method 213, condition F.</p>	<p><b>WEIGHT</b></p> <p>1.3 ounces (37 grams).</p> <p><b>CASE</b></p> <p>Solvent-resistant thermoplastic polyester, meets UL94V-0. Dimensions: 15 mm D by 32 mm H by 43 mm W (0.6 in. D by 1.265 in. H by 1.690 in. W), not including pins.</p> <p><b>ENVIRONMENTAL</b></p> <p>Meets the environmental specifications of the ROC or FloBoss in which the module is installed, including temperature, humidity, and transient protection.</p> <p><b>APPROVALS</b></p> <p>Approved by CSA for hazardous locations Class I, Division 2, Groups A, B, C, and D.</p>
--	---

Bristol, Inc., Bristol Babcock Ltd, Bristol Canada, BBI SA de CV and the Flow Computer Division, are wholly owned subsidiaries of Emerson Electric Co. doing business as Remote Automation Solutions ("RAS"), a division of Emerson Process Management. FloBoss, ROCLINK, Bristol, Bristol Babcock, ControlWave, TeleFlow and Helicoid are trademarks of RAS. AMS, PlantWeb and the PlantWeb logo are marks of Emerson Electric Co. The Emerson logo is a trademark and service mark of the Emerson Electric Co. All other marks are property of their respective owners.

The contents of this publication are presented for informational purposes only. While every effort has been made to ensure informational accuracy, they are not to be construed as warranties or guarantees, express or implied, regarding the products or services described herein or their use or applicability. RAS reserves the right to modify or improve the designs or specifications of such products at any time without notice. All sales are governed by RAS' terms and conditions which are available upon request. RAS does not assume responsibility for the selection, use or maintenance of any product. Responsibility for proper selection, use and maintenance of any RAS product remains solely with the purchaser and end-user.

**Emerson Process Management**

**Remote Automation Solutions**  
Marshalltown, IA 50158 U.S.A.  
Houston, TX 77041 U.S.A  
Pickering, North Yorkshire UK Y018 7JA

