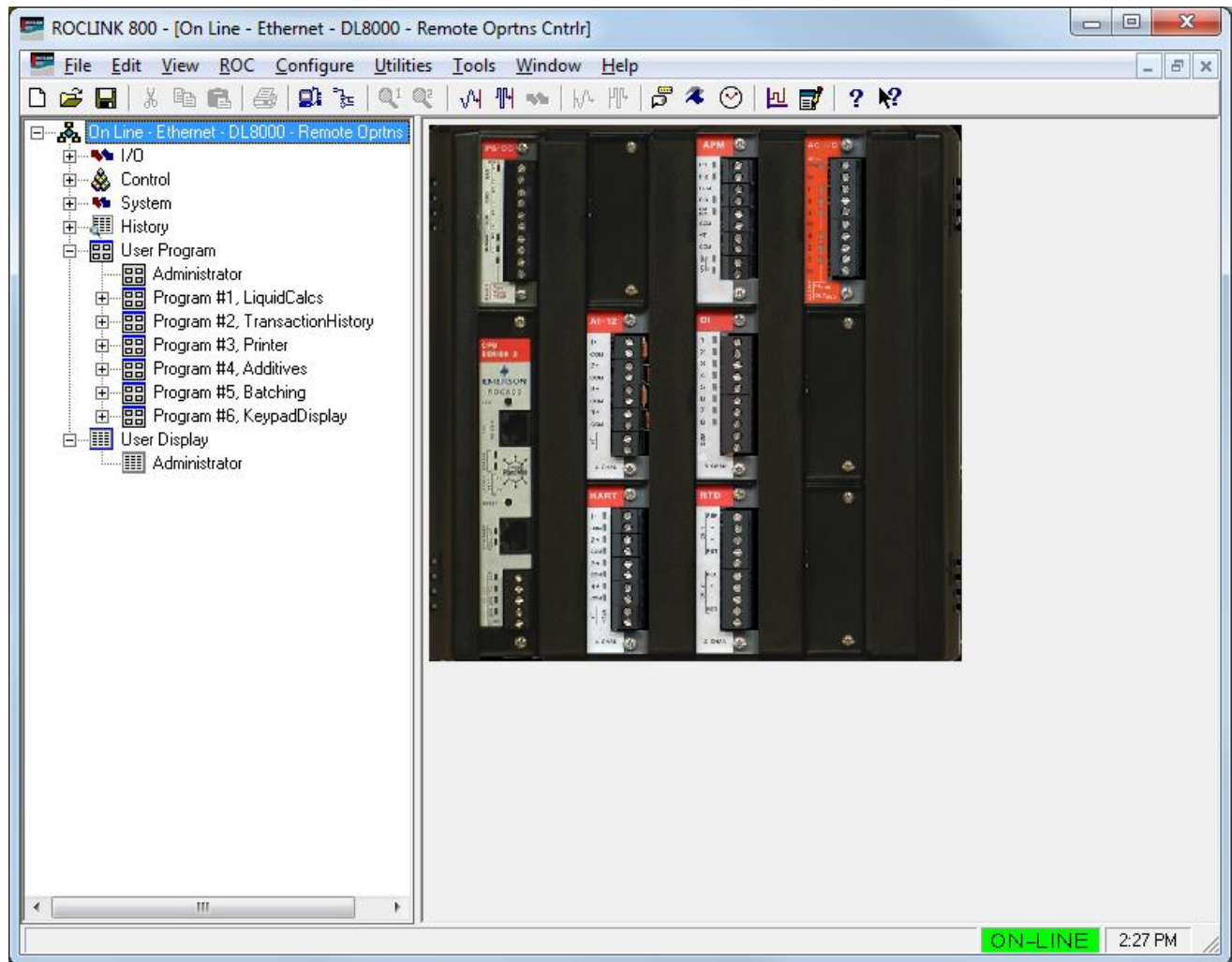


Part Number D301259X012

December 2017

# ROCLINK™ 800 Configuration Software User Manual (for DL8000)



## Revision Tracking Sheet

December 2017

This manual may be revised periodically to incorporate new or updated information. The revision date of each page appears at the bottom of the page opposite the page number. A change in revision date to any page also changes the date of the manual that appears on the front cover. Listed below is the revision date of each page (if applicable):

<b>Page</b>	<b>Revision</b>
All Pages	December-2017
All Pages	November-2016
All Pages	January-2016
Initial release	March 2012

# Contents

<b>Chapter 1 – Introduction</b>	<b>1-1</b>
1.1 ROCLINK 800 Software Basics .....	1-1
1.2 Computer Requirements .....	1-2
1.3 Contacting Technical Support .....	1-2
1.4 Software Installation .....	1-2
1.4.1 Installing ROCLINK 800 under Microsoft Windows 10, Windows 8 or Windows 7.....	1-3
1.4.2 Un-installing ROCLINK 800 .....	1-26
1.5 Starting ROCLINK 800 Software.....	1-26
1.5.1 Logging On.....	1-26
1.6 User Interface Basics .....	1-27
1.6.1 Device Dynamic Interface .....	1-29
1.6.2 Standard Buttons .....	1-30
1.6.3 Toolbar Buttons.....	1-31
1.6.4 Configuration Tree Menu .....	1-33
1.6.5 Keystrokes .....	1-33
1.6.6 Help System.....	1-34
1.6.7 Basic Navigation .....	1-35
1.6.8 Text Boxes .....	1-37
 <b>Chapter 2 – Device Directory and Device Root</b>	 <b>2-1</b>
2.1 Device Directory .....	2-1
2.1.1 Communication Parameters Setup Screen .....	2-2
2.2 Device Root.....	2-4
2.2.1 Backing Up Configurations .....	2-4
2.2.2 Adding a Group .....	2-5
2.2.3 Deleting a Group .....	2-5
2.2.4 Adding a Device .....	2-5
2.2.5 Deleting a Device .....	2-6
2.2.6 Deleting All Devices .....	2-6
2.2.7 Renaming a Group or Device .....	2-6
 <b>Chapter 3 – Communications and Security</b>	 <b>3-1</b>
3.1 Communications.....	3-1
3.2 ROCLINK 800 Communications .....	3-2
3.2.1 ROCLINK 800 Communications General Tab .....	3-2
3.2.2 ROCLINK 800 Communications Advanced tab .....	3-5
3.3 Communication Ports .....	3-7
3.4 Configuring Communications Ports.....	3-7
3.4.1 Configuring TCP/IP Communications on the Ethernet Port.....	3-8
3.4.2 Comm Ports General Tab .....	3-10
3.4.3 Comm Ports Modem Tab.....	3-12
3.4.4 Comm Ports SRBX Tab .....	3-13
3.4.5 Comm Ports Store & Forward Tab .....	3-15
3.4.6 Comm Ports Diagnostics Tab .....	3-16
3.5 Connecting to a ROC .....	3-17
3.5.1 Direct Connect .....	3-18
3.5.2 Local Port (LOI).....	3-19
3.5.3 Connect to a ROC.....	3-19
3.5.4 Successful Login .....	3-19
3.5.5 Disconnecting from a ROC .....	3-20

3.6	Troubleshooting Connection Errors .....	3-20
3.6.1	Troubleshooting ROCLINK 800 Communications .....	3-21
3.6.2	Troubleshooting TCP/IP Connections .....	3-21
3.7	Security .....	3-22
3.7.1	ROCLINK 800 Security .....	3-22
3.7.2	Device Security .....	3-26

**Chapter 4 – The File Menu** **4-1**

---

4.1	New Configuration.....	4-2
4.1.1	Configuration Checklist.....	4-2
4.1.2	Duplicating a Configuration.....	4-2
4.2	Opening a Configuration File .....	4-3
4.2.1	Configuration Tree Menu .....	4-4
4.2.2	Modifying an Existing Configuration File.....	4-5
4.2.3	Adding Modules to an Existing Configuration File .....	4-5
4.3	Downloading a Configuration .....	4-8
4.4	Saving a ROC User File.....	4-9
4.5	Saving a Configuration.....	4-10
4.6	Printing a Configuration.....	4-10
4.7	Print .....	4-11
4.8	Print Setup.....	4-12
4.9	Recent Files .....	4-12
4.10	Close .....	4-12
4.11	Exit .....	4-12

**Chapter 5 – The View Menu** **5-1**

---

5.1	Directory .....	5-2
5.2	Calibration Reports .....	5-2
5.2.1	Viewing a Calibration Report .....	5-2
5.3	History Logs .....	5-3
5.3.1	Viewing Logs from a Device .....	5-5
5.3.2	Viewing History Logs from a File .....	5-6
5.3.3	Plotting History .....	5-7
5.3.4	Managing Plotted History.....	5-8
5.4	Alarm, Event, and Weights & Measurements Events Logs .....	5-9
5.4.1	Viewing Alarm Logs .....	5-9
5.4.2	Viewing Event Logs .....	5-10
5.4.3	Viewing Weight and Measure Events Logs .....	5-11
5.5	Display Editor .....	5-11
5.6	Display Administrator .....	5-12
5.6.1	Viewing a Custom Display .....	5-12
5.6.2	Downloading a Custom Display .....	5-12
5.6.3	Deleting a Custom Display .....	5-13
5.7	I/O Monitor.....	5-14
5.8	Toolbar .....	5-15
5.9	Refresh User Program Tree.....	5-16

**Chapter 6 – The ROC Menu** **6-1**

---

6.1	Direct Connect .....	6-1
6.2	Connect/Disconnect .....	6-2
6.3	Clock .....	6-2
6.3.1	Daylight Savings Time Tab.....	6-3
6.4	Security .....	6-4
6.5	Comm Ports .....	6-4

6.6	Configuring Device Information .....	6-4
6.6.1	General Tab .....	6-5
6.6.2	Internet Tab .....	6-6
6.6.3	Points Tab .....	6-9
6.6.4	Other Information Tab .....	6-10
6.6.5	System Configuration Tab .....	6-11
6.6.6	Keypad Display Tab .....	6-12
6.6.7	Module Information Tab .....	6-13
6.6.8	MPU Loading Tab .....	6-14
6.7	Flags .....	6-16
6.7.1	Flags Tab .....	6-16
6.7.2	Returning the Device to Factory Default Settings .....	6-19
6.7.3	Flags Advanced Tab .....	6-19

## **Chapter 7 – The Configure Menu 7-1**

7.1	Configuring I/O .....	7-2
7.1.1	Analog Input (AI) Configuration .....	7-2
7.1.2	Analog Output (AO) Configuration .....	7-18
7.1.3	Discrete Input (DI) Configuration .....	7-23
7.1.4	Discrete Output (DO) Configuration .....	7-28
7.1.5	Discrete Output Relay (DOR) Configuration .....	7-37
7.1.6	Pulse Input (PI) Configuration .....	7-38
7.1.7	Thermocouple (TC) Input Configuration .....	7-45
7.1.8	Resistance Temperature Detector (RTD) Input Configuration .....	7-51
7.1.9	System Analog Input (AI) Configuration .....	7-65
7.1.10	Soft Points .....	7-70
7.1.11	Multi-Variable Sensor (MVS) Configuration .....	7-71
7.1.12	HART Input Configuration .....	7-90
7.1.13	Alternating Current I/O (ACIO) Configuration .....	7-104
7.1.14	Advanced Pulse Module (APM) Configuration .....	7-117
7.1.15	Virtual Discrete Output (VDO) Configuration .....	7-137
7.2	Control Menu .....	7-145
7.2.1	FST Registers .....	7-145
7.2.2	Proportional, Integral, and Derivative (PID) .....	7-149
7.2.3	Radio Power Control .....	7-162
7.2.4	Sampler/Odorizer .....	7-165
7.3	History Segment Configuration .....	7-165
7.4	History Point Configuration .....	7-169
7.4.1	History .....	7-172
7.4.2	Undefining a History Point .....	7-176
7.5	Opcode Table .....	7-177
7.6	Modbus Communications .....	7-178
7.6.1	Modbus Configuration .....	7-178
7.6.2	Modbus Conversion Codes .....	7-198
7.6.3	Modbus Events and Alarms .....	7-205

## **Chapter 8 – The Utilities Menu 8-1**

8.1	Update Firmware .....	8-2
8.1.1	CPU Firmware Tab .....	8-2
8.1.2	Additional Update Firmware Tabs .....	8-5
8.2	License Key Administrator .....	8-6
8.2.1	Managing Licenses .....	8-7
8.3	User Program Administrator .....	8-9
8.3.1	Downloading a User Program .....	8-11
8.3.2	MPU Loading Threshold .....	8-11

8.4	ROCLINK 800 Security .....	8-12
8.4.1	Defining Access .....	8-13
8.5	Analog Input (AI) Calibration Values .....	8-17
8.6	RTD Input Calibration Values .....	8-19
8.7	MVS Input Calibration Values .....	8-20
8.8	FST Editor .....	8-22
8.9	Keypad Display Editor .....	8-22
8.10	Custom Display Editor .....	8-22
8.11	Read File from Device .....	8-22
8.12	Communications Monitor .....	8-23

---

**Chapter 9 – The Tools Menu** **9-1**

9.1	Options .....	9-1
-----	---------------	-----

---

**Chapter 10 – The Windows Menu** **10-1**

10.1	Cascade .....	10-1
10.2	Tile .....	10-2
10.3	Active View .....	10-3

---

**Chapter 11 – The Help Menu** **11-1**

11.1	Help Topics .....	11-1
11.2	About ROCLINK 800 .....	11-2

---

**Appendix A – Glossary** **A-1**

---

**Appendix B – The Display Editor** **B-1**

B.1	Creating a New Custom Display .....	B-2
B.2	Adding Custom Display Objects .....	B-5
B.3	Managing Custom Display Objects .....	B-19
B.4	Adding an Expression to an Object .....	B-22
B.5	Editing a Custom Display from a File .....	B-23

---

**Appendix C – Alarm Processing** **C-1**

C.1	Overview .....	C-1
C.2	Group Alarms (Meters and Additive Alarms) .....	C-2

---

**Appendix D – Configuring the DL8000 Programs** **D-1**

D.1	Liquid Calcs .....	D-3
D.1.1	Liquid Preferences .....	D-4
D.1.2	Product .....	D-5
D.1.3	Densitometer .....	D-9
D.1.4	Liquid Turbine .....	D-13
D.1.5	Calculation Alarm Range Limits .....	D-18
D.2	Transaction History .....	D-28
D.2.1	Trans History Setup – View Batch History .....	D-29
D.2.2	Trans History Setup – View Transaction History .....	D-33
D.2.3	Trans History Setup – Configure History .....	D-36
D.3	Printer .....	D-42
D.3.1	Report Display Files .....	D-47

D.4	Additives .....	D-52
D.5	Batching .....	D-56
D.5.1	Component Setup .....	D-56
D.5.2	Driver Security.....	D-63
D.5.3	Meter Setup.....	D-64
D.5.4	Preset Setup .....	D-69
D.5.5	Recipe Setup.....	D-102
D.5.6	Valve Setup.....	D-105
D.6	Keypad Display .....	D-108
D.6.1	Navigation Display – Display Properties Tab.....	D-109
D.6.2	Navigation Display – PINs Tab .....	D-110
D.6.3	Navigation Display – Dynamic Data Tab .....	D-112
D.6.4	Comm Port Ownership.....	D-114
D.7	Saving the Configuration.....	D-114

---

**Index**

**I-1**

*[This page is intentionally left blank.]*