

ROCLINK™ for Windows Configuration Software

ROCLINK™ for Windows Configuration Software provides the capability to monitor, configure, and calibrate ROC300-Series Remote Operations Controllers, FloBoss™ 103, FloBoss™ 407, and FloBoss™ 500-Series Flow Managers. Functions include:

- Configure and view I/O points; flow calculations; Proportional, Integral, and Derivative (PID) loop control; system parameters; and power management features.
- Log and report history data.
- Log and report events and alarms.
- Perform five-point calibration on analog inputs, and Multi-Variable Sensor (MVS) inputs.
- Implement user security levels.
- Create and edit graphical displays.
- Create and edit Function Sequence Tables (FSTs).
- Set up communications parameters for direct connection, radio interface, telephone modems, and other communications methods.

ROCLINK for Windows software is designed for ease of use. A Windows Explorer-style menu tree makes navigating among the key functions provided by the

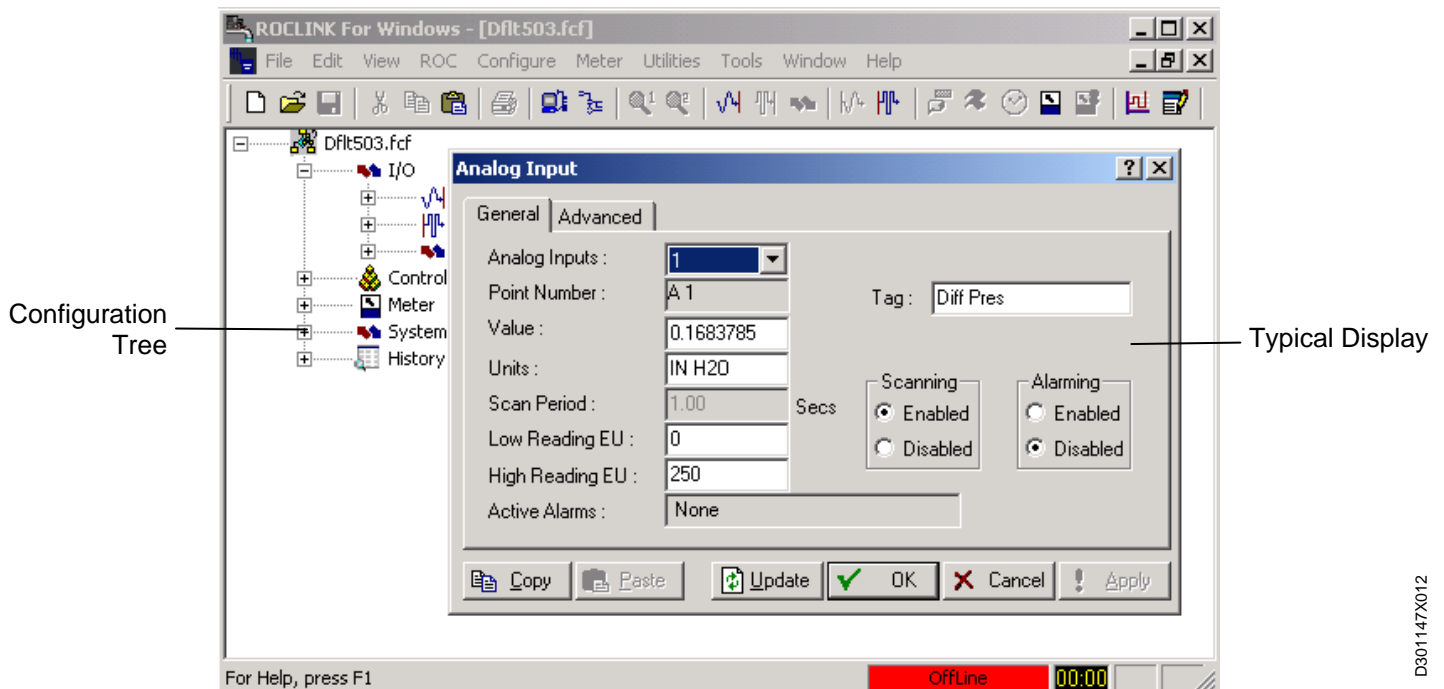
software quick and easy. Drop-down menus simplify accessing the features provided by the software. Dialog boxes and drop-down list boxes help to direct selections and data entry. Actions can be performed with the keyboard or a pointing device, such as a mouse.

Help screens are accessed either from the Help menu or by using the F1 function key. This feature makes it easy to access on-line information for any topic.

The software is designed to run on an IBM-compatible personal computer (PC) having the following minimum requirements:

- Pentium-class processor (233 MHz or greater recommended).
- CD-ROM drive.
- Windows 95 (Service Pack B), 98, 2000, XP, or Windows NT 4.0.
- 32 MB of RAM.
- SVGA color monitor, 800 x 600 pixels.
- 10 MB of available hard disk space.

The software and user documentation are supplied on a CD-ROM.



Typical Configuration Screen

Table 1. Menu Tree for ROCLINK for Windows

<p>File Menu New Open Download Close Save Configuration Print Configuration Quick Setup Print Print Setup [List of recent files] Exit</p>	<p>Edit Menu Undo Cut Copy Paste</p>	<p>View Menu Directory EFM Report Calibration Report History Alarms Events Audit Log Display I/O Monitor Toolbar</p>	<p>ROC Menu Direct Connect Disconnect/Connect Collect Data Clock Security Comm Ports Memory Information Flags</p>	<p>Configure Menu I/O Control History Soft Points LCD Tank Measurements Opcode Table MVS Sensor Radio Power Control MODBUS LCD User List Setup Hart Point Hart Device User Data [User Program Screen]</p>
<p>Meter Menu Set Up Calibration Plate Change History</p>	<p>Utilities Menu Update Firmware Update Hardware Upgrade to FlashPAC Convert Files Download User Prog Security Calibration Values MVS Calibration FST Editor Debug Comms</p>	<p>Tools Menu Customize (Toolbar)</p>	<p>Window Menu Cascade Tile [List of open files]</p>	<p>Help Menu Help Topics About ROCLINK</p>

Customizing Features

Graphical displays can be created for the flow computer that combine both static and dynamic data elements. The displays can then be used to monitor the operation of the flow computer in its application, either locally or remotely.

Security

ROCLINK for Windows software may be secured to fit the needs of the customer. The customer may restrict which authorized users have full access to the software and ROC or FloBoss data, or the customer may restrict an authorized user to one of the six access levels. Changing passwords or access levels is accomplished through the security screens, available only at the highest access level.

Bristol, Inc., Bristol Babcock Ltd, Bristol Canada, BBI SA de CV and the Flow Computer Division, are wholly owned subsidiaries of Emerson Electric Co. doing business as Remote Automation Solutions ("RAS"), a division of Emerson Process Management. FloBoss, ROCLINK, Bristol, Bristol Babcock, ControlWave, TeleFlow and Helicoid are trademarks of RAS. AMS, PlantWeb and the PlantWeb logo are marks of Emerson Electric Co. The Emerson logo is a trademark and service mark of the Emerson Electric Co. All other marks are property of their respective owners.

The contents of this publication are presented for informational purposes only. While every effort has been made to ensure informational accuracy, they are not to be construed as warranties or guarantees, express or implied, regarding the products or services described herein or their use or applicability. RAS reserves the right to modify or improve the designs or specifications of such products at any time without notice. All sales are governed by RAS' terms and conditions which are available upon request. RAS does not assume responsibility for the selection, use or maintenance of any product. Responsibility for proper selection, use and maintenance of any RAS product remains solely with the purchaser and end-user.

Emerson Process Management

Remote Automation Solutions

Marshalltown, IA 50158 U.S.A.
Houston, TX 77041 U.S.A
Pickering, North Yorkshire UK Y018 7JA

