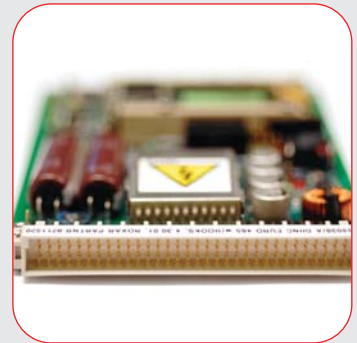
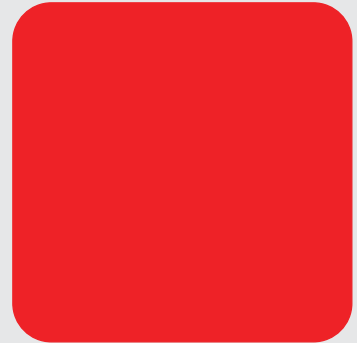
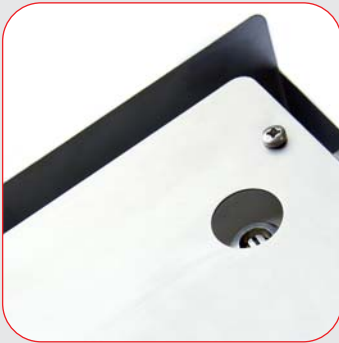


Roxar Surface Acquisition Unit

Weatherproof Single Well SAU

Data Sheet



Roxar Weatherproof Single Well Surface Acquisition Unit

The Roxar Weatherproof Single Well Surface Acquisition Unit (SAU) allows the Roxar Intelligent Downhole Network (IDN) to be deployed in non-classified areas. The ingress protection of IP66 enables installation in onshore and offshore environments and some the worlds harshest climates.

Internal to the SAU enclosure lays the Roxar Downhole Network Controller (DHNC) Card with additional flash memory. This allows the operation of up to 16 HS or 8 HM gauges. The gauge data can be remotely stored for up to 7 days. The SAU can be powered directly from a 24 VDC supply or from an optional 100-240 VAC supply version.

The SAU supports 10 Mbit Ethernet and RS485/RS422 communication. A local Ethernet service port allows for easy data retrieval and simplified field maintenance.

An 8-channel 4-20 mA analogue input module provides a simple interface for monitoring third-party instrumentation.

The in-built backlit LCD display and easy-to-use single button control panel allows the gauge data to be monitored in the field without the need of an additional service computer.



INTERPRETATION



MODELING



SIMULATION



WELL & COMPLETION



PRODUCTION & PROCESS

Specifications

General Specificationst

Single printed circuit:

- Physical Dimensions 590x350x165 mm*
- Enclosure Rating IP66

Operating Range

- Temperature 0°C to 70°C / 32°F to 158°F
- Humidity 5% - 95%

Electrical

- Nominal Input Power < 10 W
(4 x HM gauges @ 5 km)
- Max. Start-up Power < 25 W
- Input Supply Voltage 24 VDC

External Interfaces

Downhole Cable:

- Shielded Single Core
- Shielded Dual Core (twisted pair)

Communication:

- RS422
- 10 Mbit Ethernet
- RS485 (optional)

Power supply:

- 24 VDC
- 100-240 VAC

Analogue I/O:

- 8 x Analogue Input

* Not including sunscreen

Communication Protocols

- Modbus TCP
- Modbus RTU
- FTP
- PPP

Downhole Interface

- Supports up to 16 HS gauges
- Supports up to 8 HM gauges

Standards

- IEC 60529 certified
- IEC 61000-6-2 certified
- IEC 61000-6-4 certified
- CE marking

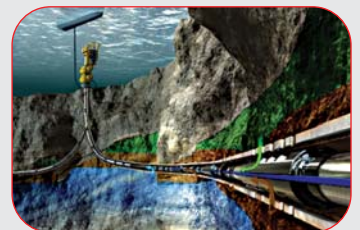
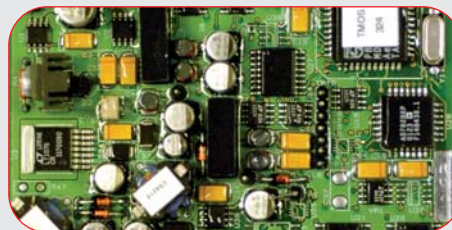
Optional Features

- Backlit LCD screen to display measurement status, time and date information **
- Front panel button to allow simple control of the display and backlight
- Optional 100-240 VAC supply voltage
- Flash memory for data storage **
- Data storage for up to 6 million data points
- 4-20 mA 8-channel analogue interface ***
- IP-rated Ethernet service port for easy download of data
- Sunscreen

** Displays data from max. 10 gauges

*** Max 10 downhole gauges when communicating using RS485/422 with analogue interface installed

Roxar Surface Acquisition Unit



www.roxar.com

For further information please contact your regional office or email: info@roxar.com or visit www.roxar.com.

Head Office
CIS
Europe
America
Middle East

Tel: +47 51 81 88 00
Tel: +7 495 504 3405
Tel: +44 1224 215 700
Tel: +1 713 334 2222
Tel: +973 17 517 111

Asia Pacific
Australia
Latin America
West Africa

Tel: +603 2162 4450
Tel: +61 8 9315 9500
Tel: +55 212 222 1941
Tel: +27 71 60 61 737



INTERPRETATION



MODELING



SIMULATION



WELL & COMPLETION



PRODUCTION & PROCESS