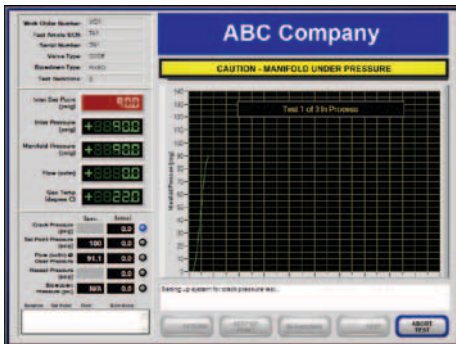
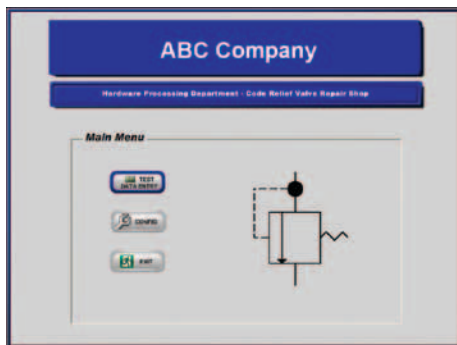


# Automation

Did you know?



Custom User Interface



System Integration



**A system from TESCO M can streamline your process!**

Automation is playing an increasing role in our daily lives as engineers strive to improve their competitive edge in the new global economy. An automated workflow can help improve uniformity, efficiency and quality while ensuring the safety of your workforce. In addition, automation provides an easy means of collecting data for customer validation quality reports while monitoring your process parameters that may be outside the norm.

An Automation system built by TESCO M will:

- Provide remote control of potentially hazardous processes for improved employee safety
- Deliver software design with custom user interfaces - networked & stand-alone
- Allow for seamless integration of hardware & software with innovative safety equipment and data management programs

*From concept to commission, TESCO M works closely with you to seamlessly integrate a streamlined system that meets your specific process or industry requirements.*

See reverse for more information.

# Standard Products & Custom Integrated Systems

for hydraulic & pneumatic applications

## Standard Configurable Panels/Manifold Blocks



## Closed Loop Electronic Control



## Custom Manifold Blocks/Panels



## Automated Test Stands



ENTRY

LEVEL OF INTEGRATION

ADVANCED

- Mechanical automation
- Reduced leak paths
- Reduced footprint
- Custom designed to application

- Electromechanical automation
- Software enabled
- High accuracy
- Eliminate droop
- Data acquisition

- Integrate third party components
- Eases preventative maintenance & troubleshooting
- Subsystem for larger projects
- Build to print or complete design & build

- Complete system hardware & software
- Networked or stand alone
- Safety interlocks & FMEA
- Factory Acceptance Test & documentation packages

Services provided by TESCOM include design & engineering, documentation and assembly/test. TESCOM offers Control Implementation (PC Solution, Controller Solution, Hardware Only) and Data Management (Data Storage & Test Reports).

Represented by:

### Contact TESCOM:

#### Americas

USA  
T +1 800 447 1250  
+1 763 241 3238  
F +1 763 241 3224  
na.tescom@emerson.com  
www.tescom.com

#### Europe

Germany  
T +49 (0) 3 88 23/31-0  
F +49 (0) 3 88 23/31-199  
eu.tescom@emerson.com  
www.tescom-europe.com

United Kingdom  
T +44 1698 424254  
F +44 1698 459299

uk.tescom@emerson.com  
www.tescom-europe.co.uk

#### Asia Pacific

China  
T +86 21 2892 9499  
F +86 21 2892 9001

apc.tescom@emerson.com  
www.tescom.com

#### Middle East & Africa

United Arab Emirates  
T +971 4 811 8100 x8446  
F +971 4 886 5465

mea.tescom@emerson.com  
www.tescom.com

**TESCOM**

©TESCOM Corporation, 2009; All Rights Reserved.  
TESCOM is a business unit of Emerson Process Management Regulator Technologies, Inc.  
Trademarks are property of divisions of Emerson Process Management.

DFLYR2000X012 Rev. 11/09

  
**EMERSON**  
Process Management