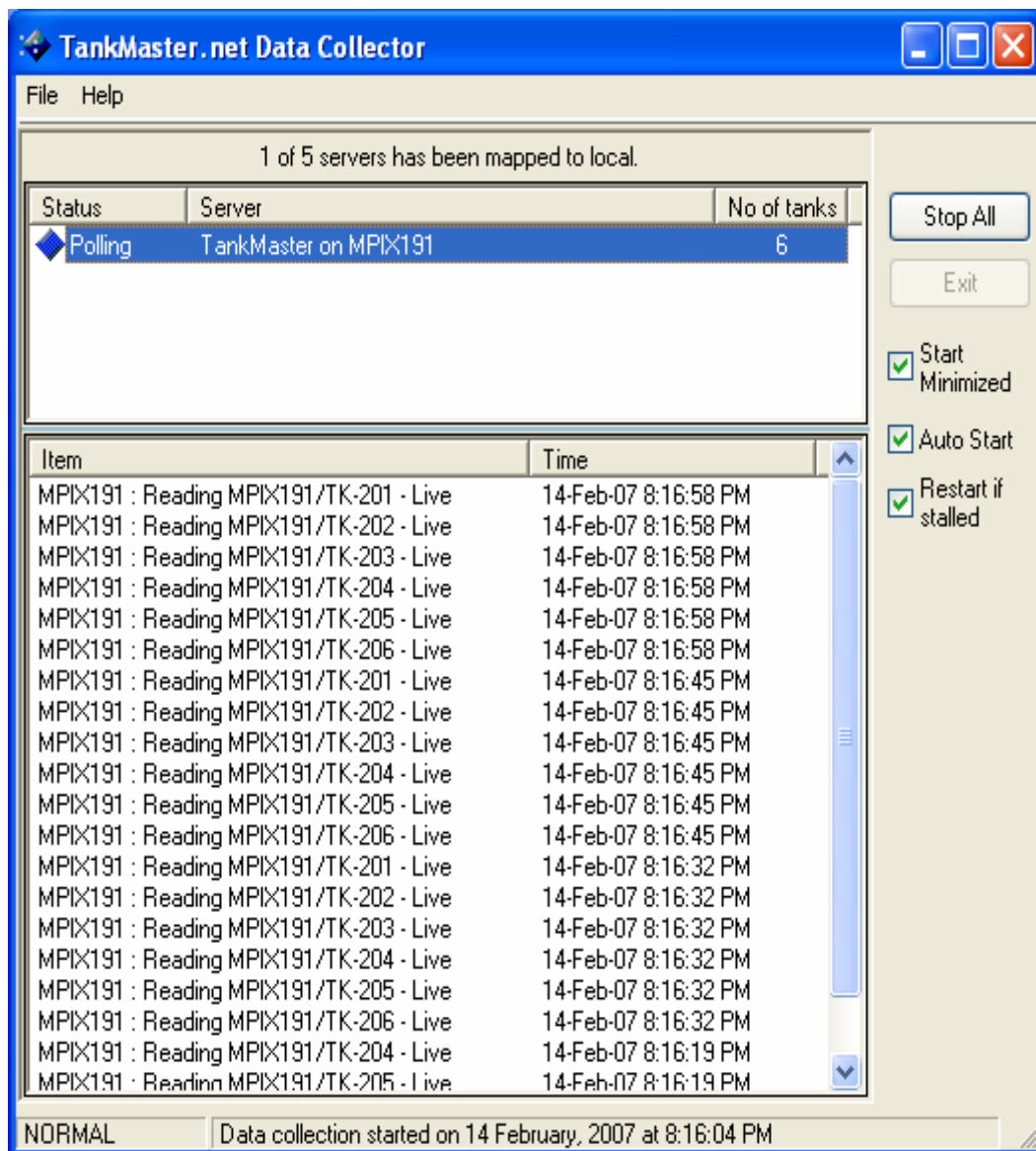


## User's Guide

Ref. no: 303036E

Third Edition, February 2007

# Rosemount TankMaster.net DataCollector





# **User's Guide**

Third Edition

Copyright © 2001 – 2007 Rosemount Tank Radar AB

## **Copyright © 2001 – 2007 Rosemount Tank Radar AB**

Copyright law and international treaties protect this program. Unauthorized reproduction, distribution of this program or any portion of it may result in severe civil and criminal penalties, and will be prosecuted to the maximum extent possible under the law.

### **Overview of Manuals**

#### **TMn2Installation.pdf**

This manual describes the procedure for installing TankMaster.net on Windows 2000 Server, Windows XP Pro and Windows 2003 Server with Internet Information Services (IIS). Before installing TankMaster.net Server, minimum system requirements have to be met that are mentioned in this manual. The manual also presents the minimum system requirements for installing TankMaster.net.

#### **TMn2Config.pdf**

This manual describes the procedure for configuring the TankMaster.net Server. The information that is viewed on the TankMaster.net Website/WAP website is set by the Administrator using the TankMaster.net Configuration application. The manual describes how the Administrator can create, edit, delete and assign rights to the Users and Groups for viewing tanks.

#### **TMn2DataCollector.pdf**

This manual describes the DataCollector application, which displays the Live and Static data of the tanks polled with the current date and time. The manual also explains how to start and end the application manually or automatically. The data collected by this application is displayed on the TankMaster.net Website/WAP websites.

#### **TMn2Website.pdf**

This manual provides a detailed description of various menus, products, information etc which are viewed by the user on the website. The user can change limited details of his profile, view details of all products, individual tanks, view graphs and download tank information in Excel format.

#### **TMn2UserStatus.pdf**

This manual gives a detailed description of the information that is available on users who are logged on to the TMn2Web website. It also displays the current page being viewed by the user, the session Id assigned, session start time and session expiry time. Only the Administrator can access this website.

**TMn2Wapsite.pdf**

This manual describes how the TankMaster.net WAP website works using an Internet browser. It also describes how to view details of individual tanks and product groups.

## **Contents**

1.0 Introduction.....	8
1.1 Overview .....	8
2.1 Menu .....	9
2.1.1 File .....	9
2.1.2 Help .....	10
2.2 Status bar.....	10
2.3 Buttons used in the TankMaster.net DataCollector Application...	10
2.3.1 Start All .....	10
2.3.2 Stop All .....	11
2.3.3 Exit.....	11
2.4 Checkboxes on TMn2DataCollector window .....	11
2.4.1 Start Minimized .....	11
2.4.2 Auto Start.....	11
2.4.3 Restart if stalled .....	11
2.5 Upper window pane of DataCollector .....	11
2.6 Lower window pane of Data Collector .....	13
2.6.1 To start Data Collector when the computer is switched on ...	14
4.0 Keyboard Map .....	18
4.1 Function Keys for DataCollector window .....	18
4.2 Action Keys for TankMaster.net DataCollector window .....	18
5.0 Troubleshooting.....	19

## 1.0 Introduction

### 1.1 Overview

The **TankMaster.net DataCollector's** function is to poll the Live and Static Data from the locally mapped TankMaster Servers that are configured using the TankMaster.net Configuration application.

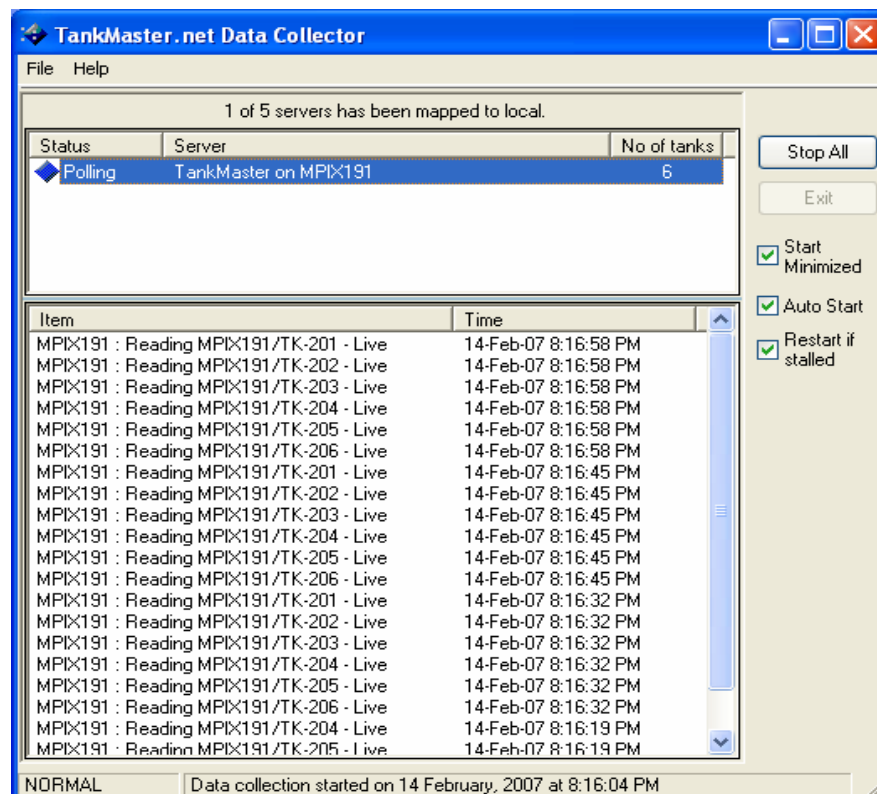
---

**Note! Two versions of TankMaster.net can co-exist or can be installed on a single machine, because both installers use separate installation directories and different application names.**

**An important aspect to remember is, when two TankMaster.net versions are installed on the same machine, only one Data Collector should be started to poll data from TankMaster.net Servers. (i.e. TMnDataCollector or TMn2DataCollector).**

---

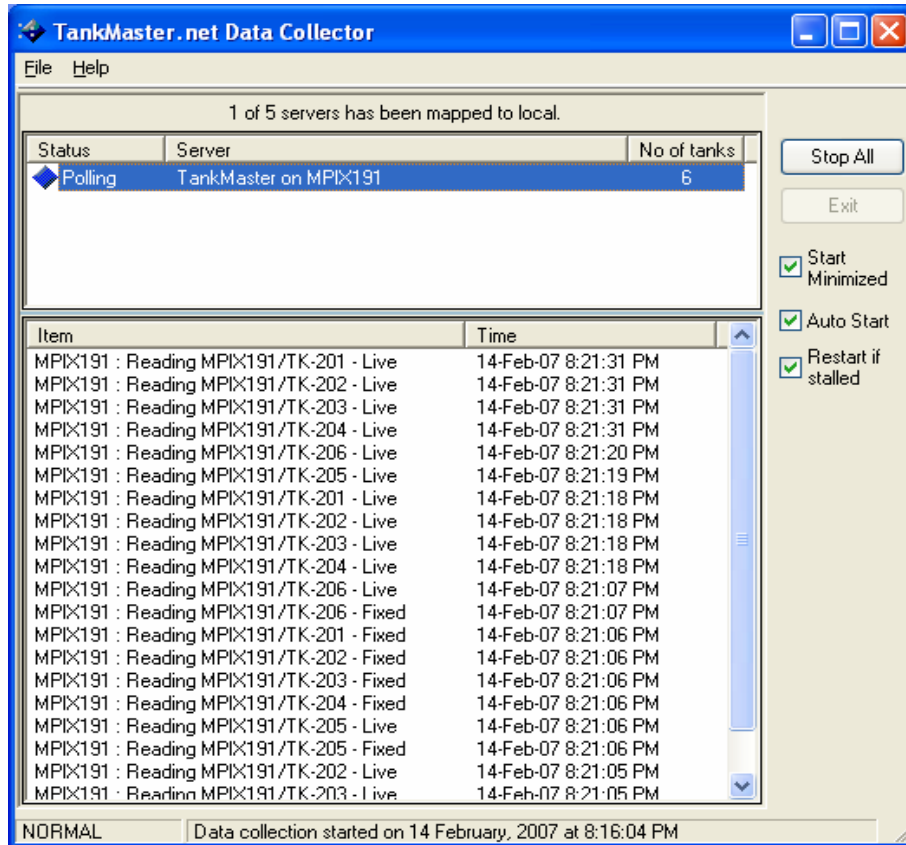
Before starting the DataCollector, make sure that the security lock is connected to the parallel/USB port of the TankMaster Server. If the security lock is not connected to the TankMaster Server, the DataCollector will start in DEMO MODE, which will automatically shut down after eight hours. When started, it also shows the status of the TankMaster Server and the status of the data polled. The status of the Servers is shown in the upper window pane and the status of the data polled is visible in the lower window pane. If the Servers are not started in the DataCollector, the user will not be able to view the current status of the tank data.





### 2.0 TankMaster.net DataCollector Window

The DataCollector window displays the status of the TankMaster Servers mapped locally and the number of tanks each Server has been configured for. The lower window displays the information regarding the mapped tanks being polled alongwith the date time stamp of the polled tank data.



#### 2.1 Menu

The menu bar at the top of the screen contains the **File** menu and the **Help** menu.

##### 2.1.1 File

The **File** menu has three sub menus, **Start All**, **Stop All** and **Exit**.

##### **Start All**

The **Start All** sub menu starts polling all mapped TankMaster Servers for data and the menu option changes to **Stop All**.

##### **Stop All**

The **Stop All** sub menu stops polling all mapped TankMaster Servers for data and the menu option changes to **Start All**.

### Exit

The **Exit** sub menu closes the DataCollector application. This option is enabled when all the Servers are stopped.

### 2.1.2 Help

The **Help** menu has two sub menus, **Help on DataCollector** and **About**. The **Help** option guides the administrator through the working of the TMn2DataCollector .

#### Help on DataCollector

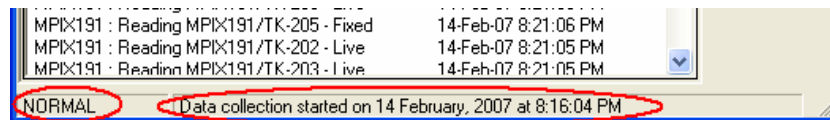
The **Help** sub menu opens the help file for the TankMaster.net DataCollector application.

#### About

The **About** sub menu provides information about the version and build number of the TankMaster.net DataCollector application. It also provides an option to view System Information of the current machine.

### 2.2 Status bar

The status bar is located at the bottom of the TMn2DataCollector main window. The Status bar shows the status of the application



Displays the DataCollector's mode

Shows the Start date / time of the TankMaster.net Data Collector.

### 2.3 Buttons used in the TankMaster.net DataCollector Application.

#### 2.3.1 Start All

The **Start All** button starts polling all mapped TankMaster Servers for data and the button caption changes to **Stop All**.

### 2.3.2 Stop All

The **Stop All** button stops all the mapped TankMaster Servers on your local machine and the button caption changes to **Start All**.

### 2.3.3 Exit

The **Exit** button closes the DataCollector application. This option is enabled when all the Servers are stopped.

## 2.4 Checkboxes on TMn2DataCollector window

### 2.4.1 Start Minimized

If the **Start Minimized** box is checked, the DataCollector starts minimized in the system tray. This checkbox is unchecked by default.

### 2.4.2 Auto Start

If the **Auto Start** box is checked, it will start data polling on all the locally mapped TankMaster Servers when the DataCollector application is started.

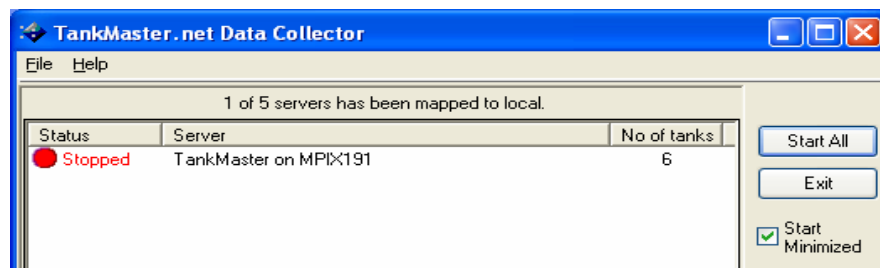
### 2.4.3 Restart if stalled

If the **Restart if stalled** box is checked, the DataCollector will automatically restart polling the stalled TankMaster Server after four minutes.

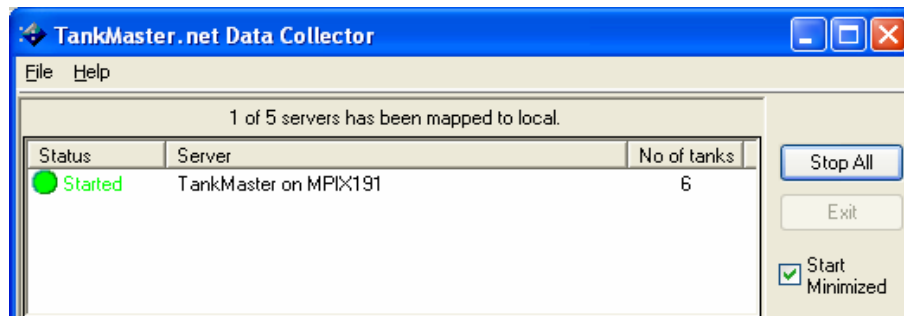
## 2.5 Upper window pane of DataCollector

The DataCollector's upper window pane displays the status of the TankMaster Servers mapped locally and the number of tanks each Server has been configured for.

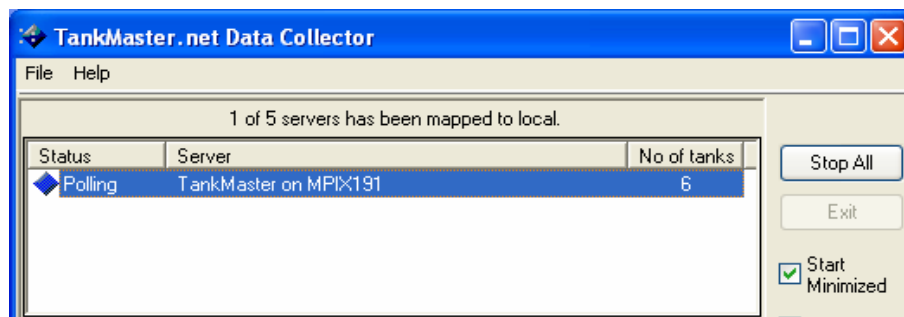
If the **Auto Start** and **Restart if stalled** options are unchecked before the DataCollector application is started, the status of the Servers will be displayed as **Stopped** as shown below.



To start polling of Servers click on the **Start All** button. The status of the Servers will be displayed as **Started** as shown below.



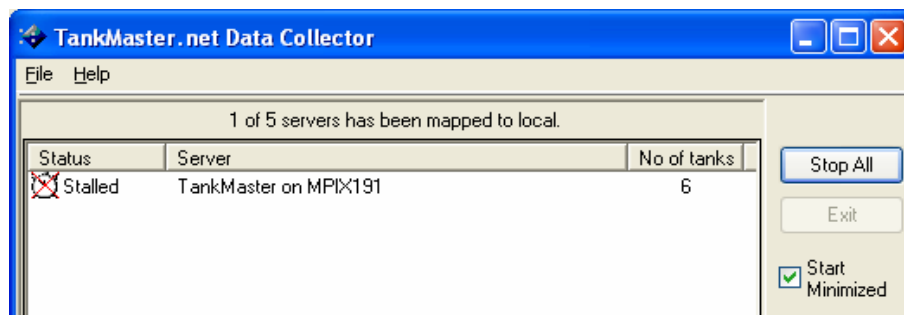
Once the TankMaster Server starts polling data, the status of the Servers will be displayed as **Polling** as shown below.



The **Server** column will display the computer name of the mapped TankMaster Server.

The **No of tanks** column will display the number of tanks that are mapped on the respective Server.

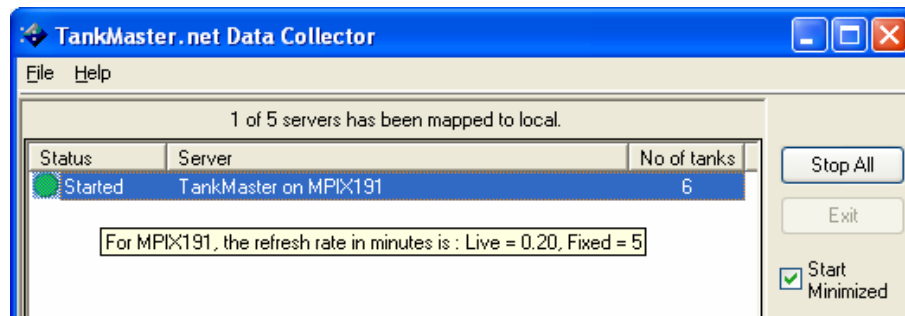
If the TankMaster Server is not switched on that particular TankMaster Server will display **Stalled** status as shown below.



If the **Restart if stalled** box is checked, the DataCollector will automatically restart polling the stalled TankMaster Server after four minutes.

## TankMaster.net DataCollector Window

To view the Refresh rate of Live and Fixed data on a Server, point the cursor to any Server in the Status column in the upper window. The machine number of the TankMaster Server, the Refresh rate in minutes of Live and Fixed data will be displayed as shown below.



Changes in the Refresh rate of Live and Fixed data cannot be made in DataCollector, but have to be made in TankMaster.net Configuration.

For details on changing the Refresh rate, refer to section **4.1 Mapping Servers and Tanks** in TMn2Config.pdf.

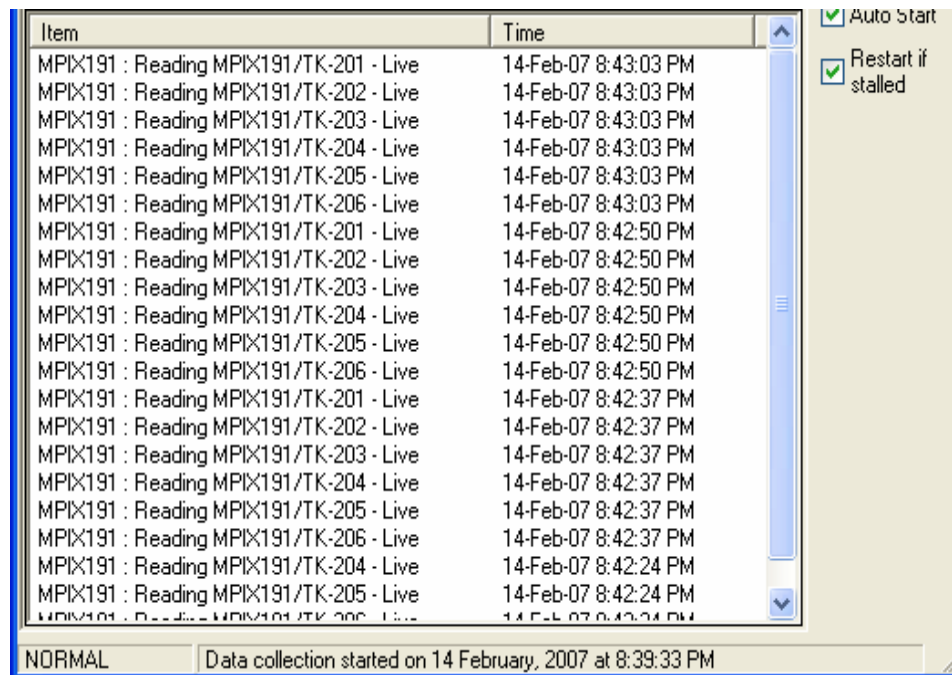
---

**Note! The Refresh rate of Data Polling cannot be edited in TMn2DataCollector. It has to be changed in TMn2Config.**

---

## 2.6 Lower window pane of Data Collector

The lower window displays the information regarding the mapped tanks being polled along with the date time stamp of the polled tank data.

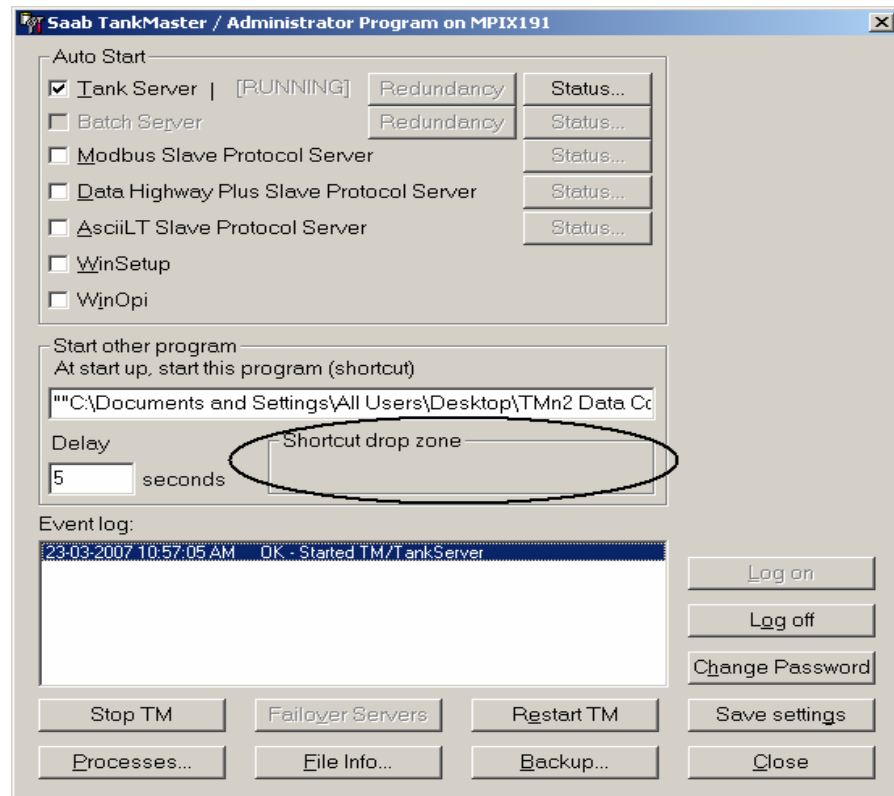


In the **Item** column it will display the computer name on which the TankMaster Server is currently being polled. The tanks that are being polled and type of data on the tank (Live or Fixed) are displayed. The current date and time of the tanks polled will be shown in the **Time** column.

### 2.6.1 To start Data Collector when the computer is switched on

DataCollector can be started automatically when the computer is switched on.

If the **TankMaster** server and the **TankMaster.net** are installed on the same computer, open the **TankMaster Status** window. Keeping the **Ctrl** key pressed drag and drop the **TMn2 DataCollector** shortcut icon to the **Shortcut drop zone** section on the **TankMaster status window**.



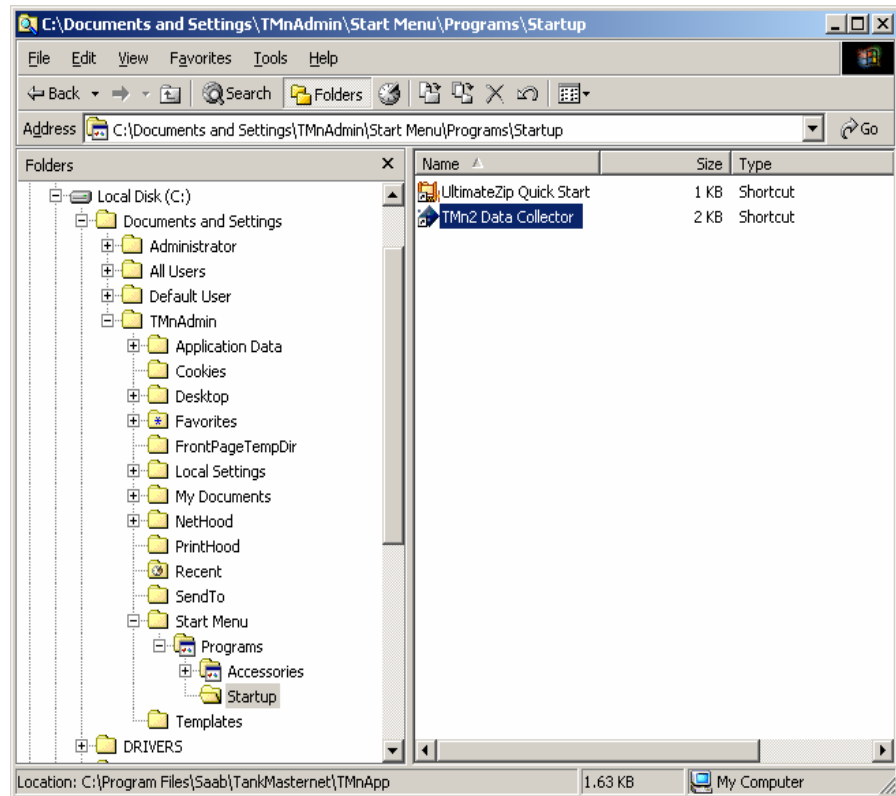
The shortcut path will be displayed in the field under **At start up, start this program (shortcut)**. Click the **Save settings** button. On restarting the computer DataCollector will start automatically.

If **TankMaster.net** is installed on a separate machine than the **TankMaster** then in order to start DataCollector automatically at startup add the **TMn2 DataCollector** shortcut to the Startup program group.

## ***TankMaster.net DataCollector Window***

---

Select the **TMn2 DataCollector** icon, right click and select Copy. Right click on the windows Start button > Explore > Start Menu\Programs\Startup.



Paste the **TMn2 DataCollector** icon into this folder. On restarting the computer DataCollector will start automatically.

To enable Data Collector to start polling TankMaster Servers automatically at computer startup [refer to section 2.4](#)

### 3.0 Using TankMaster.net DataCollector

The DataCollector application gets installed alongwith the TankMaster.net setup. To run the application, click on Start>Programs>Saab TankMaster>**TMn2DataCollector** or double click on the **TMn2 Data Collector** icon on the desktop as shown below.



To start Data Polling on the TankMaster Servers follow the steps given below:

Click on the **Start All** button. This will start data polling on all the Servers that are locally mapped. Data polling can also be started by clicking on the **File >Start All** menu. The Servers mapped on the machine will be displayed in the upper window pane. When the **Start All** button is clicked, the caption will change to **Stop All**. When Data Polling starts, the **Start All** option of the menu bar will change to **Stop All**.

The status and name of the Server will be displayed in the upper window pane of the DataCollector and the data polled will be displayed in the lower window pane. The starting date and time of the DataCollector will be displayed on the status bar.

To stop data polling on the Servers click on the **Stop All** button or select the **Stop All** option from the **File** menu.

If the **Start Minimized** box is checked, the DataCollector starts minimized in the system tray. This checkbox is unchecked by default. The icon will be displayed as below.



If one of the TankMaster Servers is stalled, the icon will be shown as below.



To view the DataCollector window, double click on the icon or right click on the icon and click **Restore**.

If the **Auto Start** box is checked, it will start data polling on all the locally mapped TankMaster Servers when the DataCollector application is started.

If the **Restart if stalled** box is checked, the DataCollector will automatically restart polling the stalled TankMaster Server after four minutes.



## ***Using TankMaster.net DataCollector***

---

To exit from the DataCollector application, the administrator will first have to **Stop All** the Servers and then click on the **Exit** button or select the **Exit** option from the File menu.

The **Help** option on the menu bar will open the help file for DataCollector. Help can also be accessed by pressing the function key "F1".

If you set your cursor on the status of the TMn2DataCollector, the Refresh rate for the Live and Static data will be displayed to you as a tool tip. The name of the Server will also be displayed in the tool tip.

## 4.0 Keyboard Map

There are several function keys and shortcut keys that are created in the TankMaster.net. With the help of these keys you can open or close an application or do any other such tasks by using the keyboard keys. The keys that are used in the TMn2DataCollector software are given in the below table.

### 4.1 Function Keys for DataCollector window

Keys	Function
F1	Opens the help manual of the active window or the selected item.
(Alt + F4)	Exit from the current application.

### 4.2 Action Keys for TankMaster.net DataCollector window

Keys	Function
Alt + F	Selects the File option on the menu bar.
Alt + H	Selects the Help option on the menu bar.
Alt + S	Starts or stops all the mapped Servers on the local machine by invoking the Start All button or the Stop All button.
(Alt + F) S	Starts or stops all the mapped Servers on the local machine.
(Alt + F) X	Exit. Exits from the application. Works similar to the cancel button.
(Alt + H) H	Opens the help file of TMn2DataCollector.
(Alt + H) A	Opens the About TankMaster.net DataCollector window.

### **5.0 Troubleshooting**

#### **What if I get an error during data polling?**

If you get an error while data polling, it may be due to:

Directory Security not being set on the server.

A server malfunction, the server may not be switched on or the network connection may be lost.

Two versions of Data Collector are installed and are polling data simultaneously. Only one version of Data Collector must be started.

#### **What if the Data Collector automatically shuts down after eight hours?**

If the Data Collector automatically shuts down after eight hours, the security lock has not been connected on the parallel / USB port of the TankMaster Server. If the security lock is not connected to the TankMaster Server, the DataCollector will start in DEMO MODE, which will automatically shut down after eight hours.

#### **How do I change the Refresh Rate of Live and Fixed data?**

Changes in the Refresh Rate of Live and Fixed data cannot be made in Data Collector, but have to be made in the TankMaster.net Configuration application.

#### **What if data polling has stalled?**

Data polling will stall if the TankMaster Server is not available on the network or if the Server has not started to poll data.

#### **What if data polling does not restart automatically after stalling ?**

If data polling does not restart automatically after stalling, click on the **Restart if Stalled** checkbox. The DataCollector will automatically restart polling the stalled TankMaster Server after four minutes.





## **User's Guide**

Ref. no: 303036E

Third Edition, February 2007

---

### **Emerson Process Management**

#### **Rosemount Tank Gauging**

Box 130 45

SE-402 51 Göteborg

SWEDEN

Tel (International): +46 31 337 00 00

Fax (International): +46 31 25 30 22

E-mail: [sales.srt@emersonprocess.com](mailto:sales.srt@emersonprocess.com)

[www.rosemount-tg.com](http://www.rosemount-tg.com)



**EMERSON**<sup>™</sup>  
Process Management