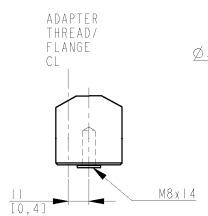


DEPENDING ON TURBULENCE IN TANK AND MOUNTING ANGLE THE PROBE MAY NEED TO BE ANCHORED OR SUPPORTED.

ENSURE MID PROBE HAS NO CONTACT WITH WALL



DETAIL A

FOR MORE INFO, SEE REFERENCE MANUAL

1. P/T-RATING FOR FLANGE; SEE REF. MANUAL.

04	GASKET	I	ACC. TO BSP-G THREAD STD.	CUSTOMER
03	GASKET	I	SOFT GASKET T=MIN 1.6 (ANSI B16.5/1c, EN1514-1/1BC). SEE NOTE 1.	CUSTOMER
02	SCREW/NUT/WASHER	-	ACC. TO FLANGE STD. SEE NOTE 1.	CUSTOMER
01	FLANGE	I	DIM. ACC. TO ANSI B 16.5/EN 1092-1. OTHER ON REQUEST. P/T RATING. SEE NOTE 1.	RMT
POS	ITEM DESCRIPTION	QTY	REMARK	SUPPLIER

ISSUED BY	MEK	PRODUCT CODE	FILE	INSTALLATION DRAWING TITLE
EMe-HW-C	0909	5300	PRO/E	MECHANICAL INSTALLATION DWG
APPROVED BY	MEK	ORIGINAL DWS. NO.	SCALE	FLEXIBLE TWIN LEAD
EMe-HF	0909	9240030-994	-	
		T OF ANGLE	DOC TYPE	DWG NO.
		2	2	9240030-994
				ISSUE SHEET
				02 1/1

THE COPYRIGHT/OWNERSHIP OF THIS DOCUMENT IS AND WILL REMAIN OURS. THE DOCUMENT MUST NOT BE USED WITHOUT OUR AUTHORIZATION OR BROUGHT TO THE KNOWLEDGE OF A THIRD PARTY. CONTRAVENTION WILL BE PROSECUTED. ROSEMOUNT TANK RADAR AB, SWEDEN