



## THE POWER OF PREDICTIVE INTELLIGENCE FOR CRITICAL ASSETS

### ACCESS DIAGNOSTICS FROM UNINTERRUPTABLE POWER SUPPLIES

Extend your predictive maintenance program beyond traditional automation assets with the addition of Uninterruptable Power Supplies (UPS) from Chloride Industrial Power, an Emerson Network Power business. Chloride has created an enhanced EDDL file to allow AMS Device Manager users to view and diagnose AC and DC UPS via PROFIBUS DP. Gain confidence that your most critical plant asset – power – will be available to you at all times to keep your assets running without interruption.

### PROTECT MISSION-CRITICAL SYSTEMS AND PROCESSES WITH UPS

- **Track and control power quality.** Ensure you are delivering clean power to the load. Protect equipment from the damaging effect of poor quality electrical power.
- **Ensure power supply continuity.** Maintain power to critical loads via battery, in the event of a main power failure, avoiding loss of production or damage to equipment from abrupt shutdowns. With diagnostics integrated into AMS Device Manager, you can be sure that alerts are not missed due to multiple monitoring systems.
- **Rugged, long-lasting equipment.** Chloride UPS are designed for harsh environmental conditions and are long-lasting with a life of 15-60 years. Use AMS Device Manager to ensure that any diagnostics within the UPS are addressed quickly to ensure the system is working when you need it most.



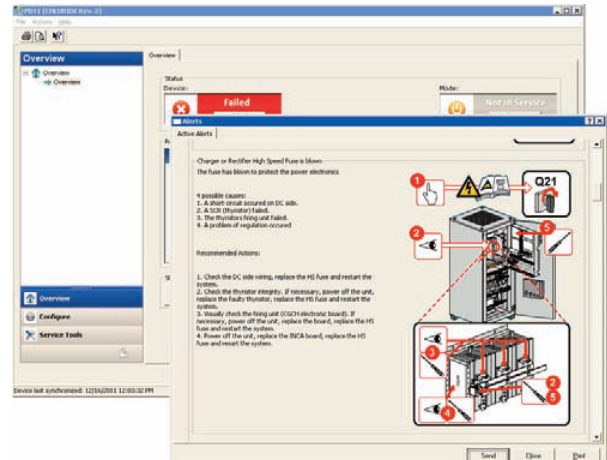
## TECHNOLOGY ENABLES SMART DIAGNOSTICS ON MORE ASSETS THAN EVER BEFORE

### KEY COMPONENTS

AMS Device Manager provides configuration features and the interface for the advanced diagnostics used with HART, FOUNDATION fieldbus, and PROFIBUS instrumentation. It also stores all remote asset data including tag numbers, names, locations, calibration status, configurations, diagnostics, and documentation. Connect your UPS via DeltaV™, Ovation™, or for third party systems via the PROFIBUS interface to AMS Device Manager, enabling all the benefits of asset management in a single system for all of your critical assets.



Chloride Industrial Power  
Uninterruptible Power Supplies



Predictive diagnostics and troubleshooting recommendations make maintenance easier.

For more details, please contact your Emerson sales representative.

©2012, Emerson Process Management.

The contents of this publication are presented for informational purposes only, and while every effort has been made to ensure their accuracy, they are not to be construed as warranties or guarantees, express or implied, regarding the products or services described herein or their use or applicability. All sales are governed by our terms and conditions, which are available on request. We reserve the right to modify or improve the designs or specifications of our products at any time without notice.

All rights reserved. The Emerson logo is a trademark and service mark of Emerson Electric Co. All other marks are the property of their respective owners.

**Emerson Process Management**  
12001 Technology Drive  
Eden Prairie, MN 55344 USA  
T 1(952)828-3633  
F 1(952)828-3006

**Emerson Network Power**  
30 Avenue Montgolfier - BP90  
69684 Chassieu Cedex, France  
T (33) 4 78 40 13 56  
F (33) 4 78 90 58 90