

Device Dashboards Help You Do More with Less

Business Benefits

- Help less experienced instrumentation technicians perform at a higher level
- Minimize training time and get crews up to speed sooner
- Reduce work backlog, complete tasks faster and run your processes more efficiently

Applications

Project or Operating Plant

Customer Profile and Need

- Lead Instrument Engineer
- Reliability Engineer
- Maintenance Manager
- Project Engineer
- Control Engineer

Achieve desired performance results, even with new or inexperienced technicians who have limited skills or less technical knowledge.

Challenge

Half of today's workforce will be eligible for retirement in ten years or less. As companies continue to lose experienced and talented instrumentation technicians, there are not enough replacements to fill their jobs – and those who are available often don't have the required field-device knowledge and expertise. To compound the problem, measurement technology is getting more complex, driving the need for higher skill levels to ensure that performance, profit and safety targets are reached.

Using less experienced technicians with limited understanding to maintain field devices could negatively impact your company in multiple ways, cutting across operations. From a day-to-day standpoint, it could result in more work backlog, process instability and downtime, increased shutdowns or greater risks to worker and environmental safety. Longer term, the loss of experience could lead to a delay in improvements or expansion projects, or costly setbacks in new construction.



Device Dashboards help less experienced staff perform tasks quickly and more efficiently. Knowledge gained working with one device can be applied to other device types, or those using other communications protocols.

Solution

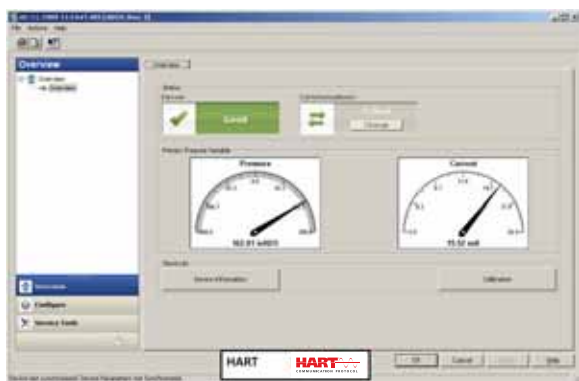
Device Dashboards from Emerson are the innovative, easy-to-use tools that can overcome a lack of expertise in the field. Created with Human Centered Design (HCD) principles, user-intuitive Device Dashboards give technicians detailed, at-a-glance insights into the status of devices and process conditions, so they can solve issues quickly and thoroughly. Dashboard screens feature consistent navigation and prompts and alerts across all device types and protocols, including HART®, wirelessHART, FOUNDATION™ Fieldbus and Profibus® PA. They make device installation, configuration and calibration easy while offering simple instruction with succinct, actionable information.

(continued on page 2)

Device Dashboard

Solution (cont.)

Best of all, workers can access these device and system insights from a safe, remote location without having to make potentially risky trips into the field to check on instrument status. Having all of this information in one place – with convenient viewing from their workstation or laptop – allows crew members to quickly identify the source of current, and potential, trouble spots within the device or throughout the control loop. Armed with this insight, your technicians can get to the root of problems fast – and tackle tasks more quickly, freeing them up to perform the proactive maintenance that improves process stability and productivity, reduces downtime and results in an optimized, profitable operation.



The navigation and operation of Device Dashboards are consistent across different protocols and different device types. Knowledge and experience gained working on one device type and one protocol can be applied to other devices and other protocols. The result is faster learning, higher productivity, fewer errors and a reduced need for device or protocol specialists.

*Standard Terms and Conditions of Sale can be found at www.rosemount.com/terms_of_sale
The Emerson logo is a trade mark and service mark of Emerson Electric Co.
Rosemount and the Rosemount logotype are registered trademarks of Rosemount Inc.
All other marks are the property of their respective owners.*

Emerson Process Management
Rosemount Inc.
8200 Market Boulevard
Chanhassen, MN 55317 USA
T (International) (952) 906 8888
T (U.S.) 1 800 999 9307
F (952) 949 8889

Emerson Process Management
Heath Place
Bognor Regis
West Sussex PO22 9SH
England
T 44 (0) 1243 863121
F 44 (0) 1243 867554

**Emerson Process Management Asia Pacific
Private Limited**
1 Pandan Crescent
Singapore 128461
T (65) 6777 8211
F (65) 6777 0947
Enquiries@AP.EmersonProcess.com