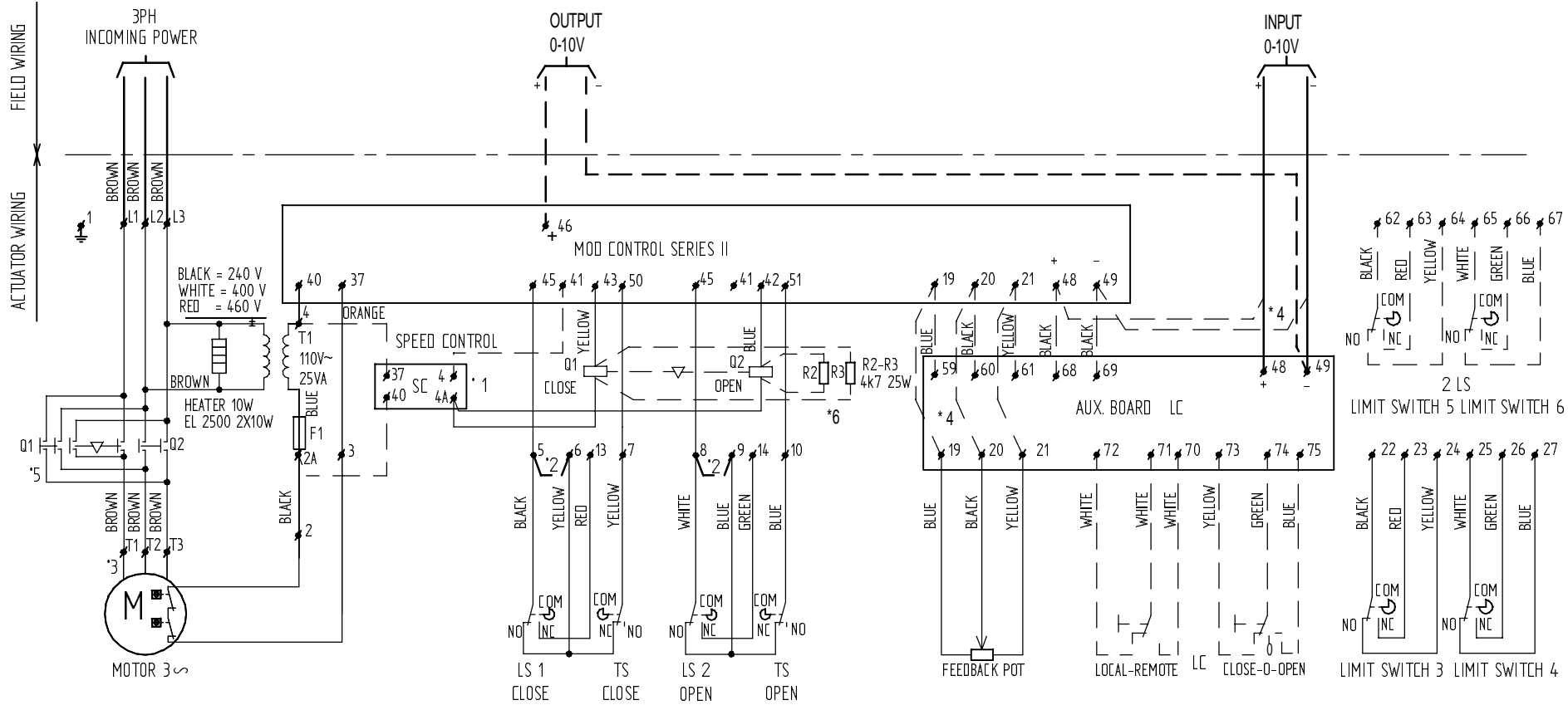


TOLERANCE LIMITS X = ± 0.5
 XX = ± 0.25
 XXX = ± 0.1
 UNLESS OTHERWISE SPECIFIED
 DIMENSIONS ARE IN MILLIMETERS
 - REPAIR ALL BUBBLES AND
 SPARK CONNECTIONS
 ANGULAR ± ± 1/2



- 1 WITHOUT SPEEDCONTROL SC
WIRES Q1 AND Q2 TO TERMINAL 41 MOD
- 2 LINK FOR TORQUE SEATED VALVE
- 3 MOTOR WIRING
EL 100/150 EL 200/2500
T1 = BLUE T1 = BROWN
T2 = BLACK T2 = BLACK
T3 = BROWN T3 = BLUE
- 4 WITHOUT LOCAL CONTROL LC
POTMETER TO TERMINAL 19, 20, 21 MOD
INPUT 0-10 V TO TERMINAL 48, 49, MOD
- 5 EL 1200 - EL 2500
Q1/Q2: USE 16A RELAY CONTACTS
- 6 RESISTORS ONLY IN COMBINATION WITH SPEEDCONTROL

LOCAL CONTROL EX
 IN EXPLOSION PROOF EXECUTION
 BOTH LOCAL/REMOTE AND
 CLOSE/STOP/OPEN SWITCHES ARE
 COMBINED INTO ONE SWITCH

LIMIT SWITCHES SHOWN IN MID STROKE
 KIT OPTIONS, LC - 2LS - SC, FROM EL200 ONLY ON ORDER
 KIT OPTIONS SHOWN IN DOTTED LINES

IMPORTANT
 Each actuator must be powered through
 its own individual switch or relay
 contacts to avoid cross feed between
 two or more actuators

ELO-MATIC INTERNATIONAL LOCATION HENGELD 101 THE NETHERLANDS		Format : A3	Drw. : RS	Scale : -	Date : 03/11/2000
Material : -		Title : Wiring diagram options			ENC nr. : H-0786 / 03/07/2001
Treatment : -		motor 3PH + 0-10V MOD+int, EL100-EL2500 WP/XP			Par. : RS
		Drw. : 990.40.039			State : Released
					Rev. : B