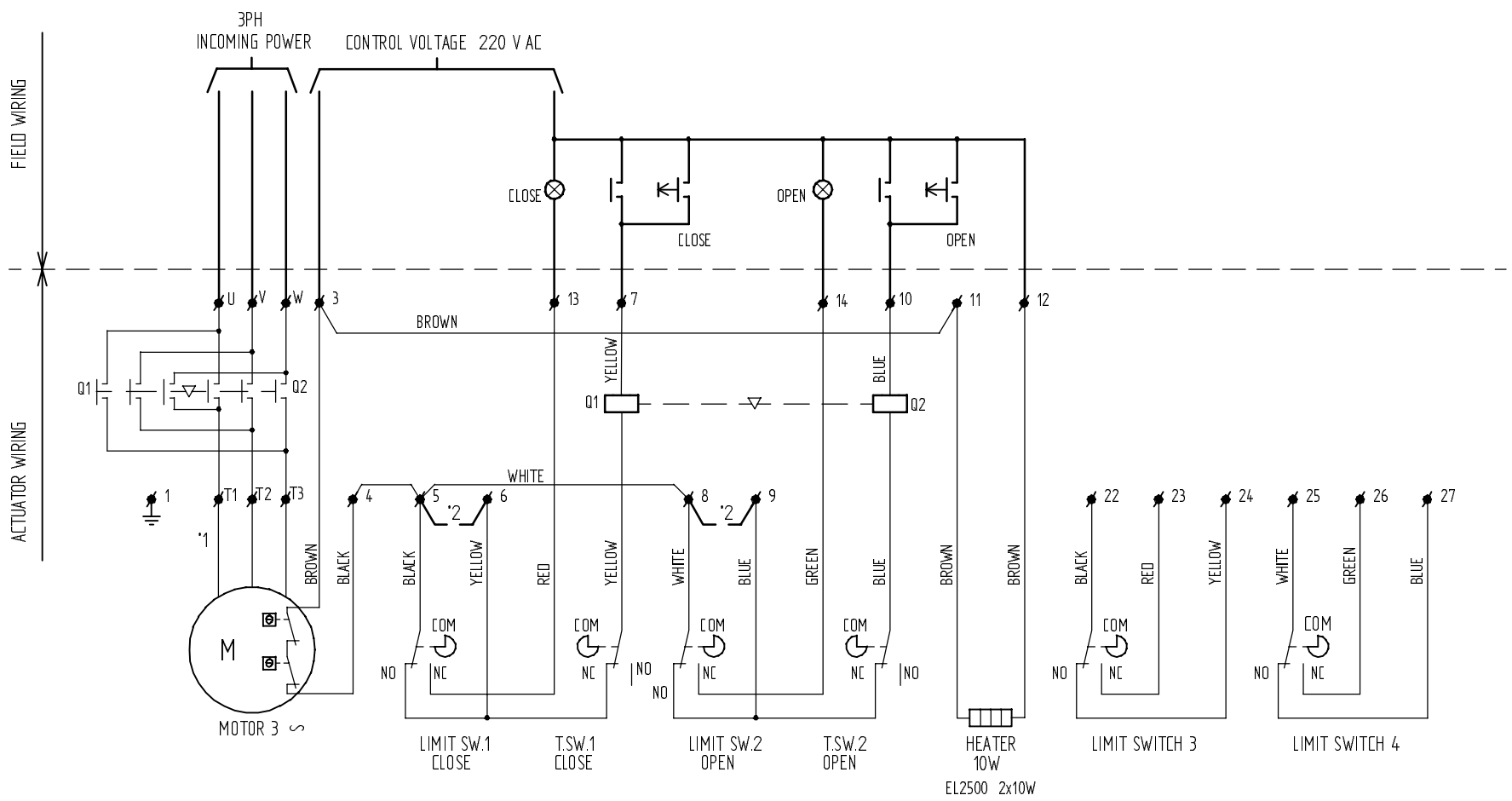


TOLERANCE LIMITS X = ± 0.5  
 UNLESS OTHERWISE SPECIFIED  
 DIMENSIONS ARE IN MILLIMETERS  
 UNLESS OTHERWISE SPECIFIED  
 ANGULAR = ° / '

X = ± 0.5  
 XX = ± 0.25  
 XXX = ± 0.1  
 ANGULAR = ° / '



\*1 MOTOR WIRING  
 EL100/150    EL200/2500  
 U = BLUE    U = BROWN  
 V = BLACK    V = BLACK  
 W = BROWN    W = BLUE  
 \*2 LINK FOR TORQUE SEATED VALVE

LIMIT SWITCHES SHOWN IN MID STROKE

**IMPORTANT**  
 Each actuator must be powered through it's own individual switch or relay contacts to avoid cross feed between two or more actuators

<b>ELO-MATIC</b> INTERNATIONAL LOCATION: HENGELD 101, THE NETHERLANDS		Format : A3	Dra. : AB	Scale : -	Date : 05/10/2000
Material : -		Title : <b>Wiring diagram options</b> motor 3ph + 4LS, integral EL100-2500			ENOC nr. : H-0747 / 18/01/2001 Date : State : Released
Treatment : -		D/wit. : 990.40.036			Rev. : A