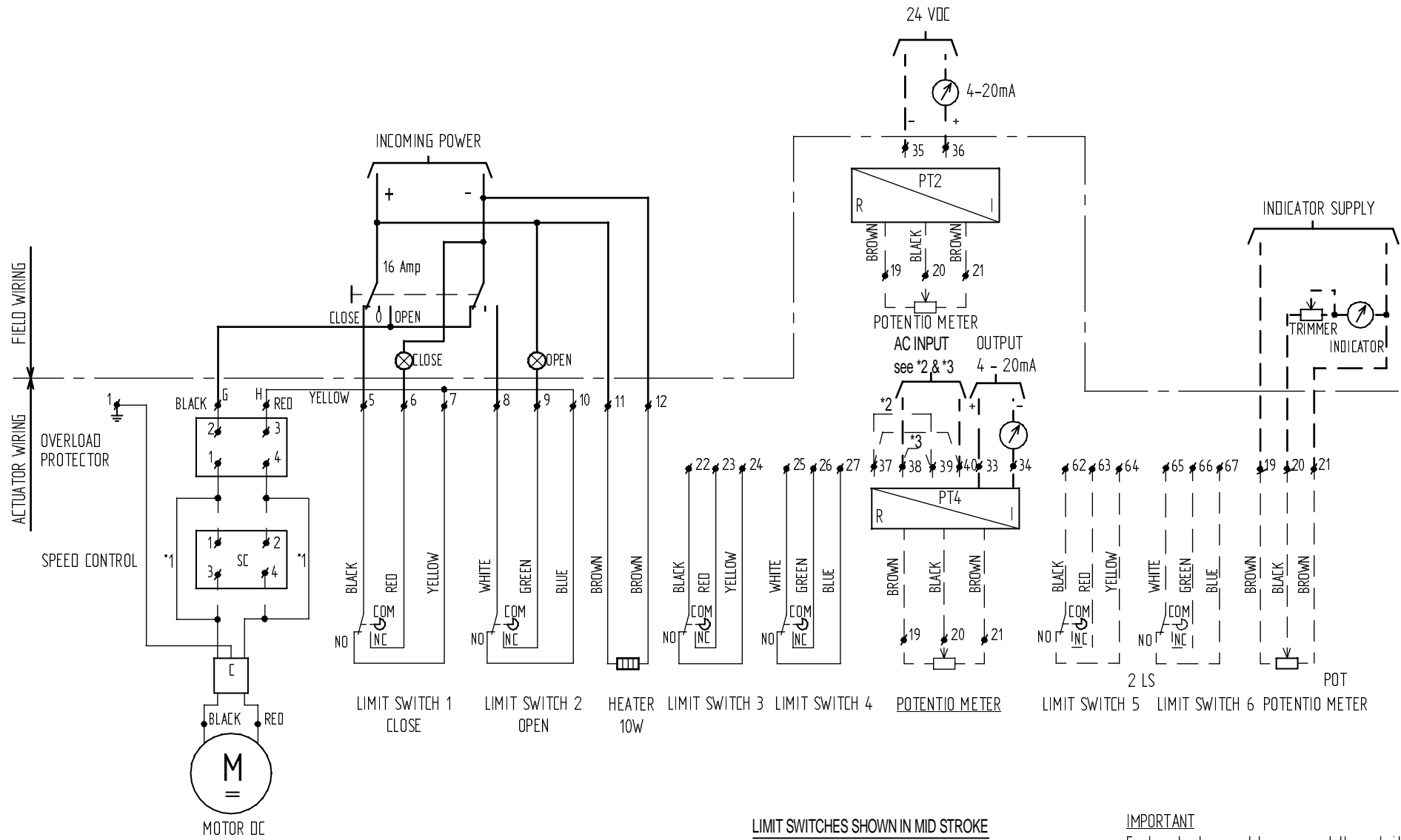


IMPORTANT
 Each actuator must be powered through its own individual switch or relay contacts to avoid cross feed between two or more actuators

LIMIT SWITCHES SHOWN IN MID STROKE

EL-O-MATIC INTERNATIONAL LOCATION HENGEDIC 101 THE NETHERLANDS			Format : A3	Drw. : AB	Scale : -	Date : 05/10/2000
Material : -		Title : Wiring diagram basic motor DC, EL55 WP/XP			ENDC nr. : H-0747 / 18/01/2001	Par. : RS
Treatment : -		Drw.nr. : 990.40.024			State : Released	
page 1 of 2						Rev. : A



- *1 NO WIRE BY SPEED CONTROL SC
- *2 LINK PT4 FOR 220V NR 37 & 39
- *3 LINK PT4 FOR 110V NR 37 & 40/ 38 & 39

LIMIT SWITCHES SHOWN IN MID STROKE

KIT OPTIONS, LC_POT_2LS_PT2_PT4_SC, ONLY ON ORDER
 KIT OPTIONS SHOWN IN DOTTED LINES
 FOR WIRING DIAGRAM LC SEE: 990.40.034

IMPORTANT

Each actuator must be powered through its own individual switch or relay contacts to avoid cross feed between two or more actuators

EL-O-MATIC INTERNATIONAL		Format : A3	Drn. : AB	Scale : -	Date : 05/10/2000
LOCATION HENGLO (O) THE NETHERLANDS		Title Wiring diagram options			ENOC nr. : H-0747 / 18/01/2001
Material : -		motor DC, EL55 WP/XP			Par. : RS
Treatment : -		Drwnr. : 990.40.024 page 2 of 2			State : Released
					Rev. : A