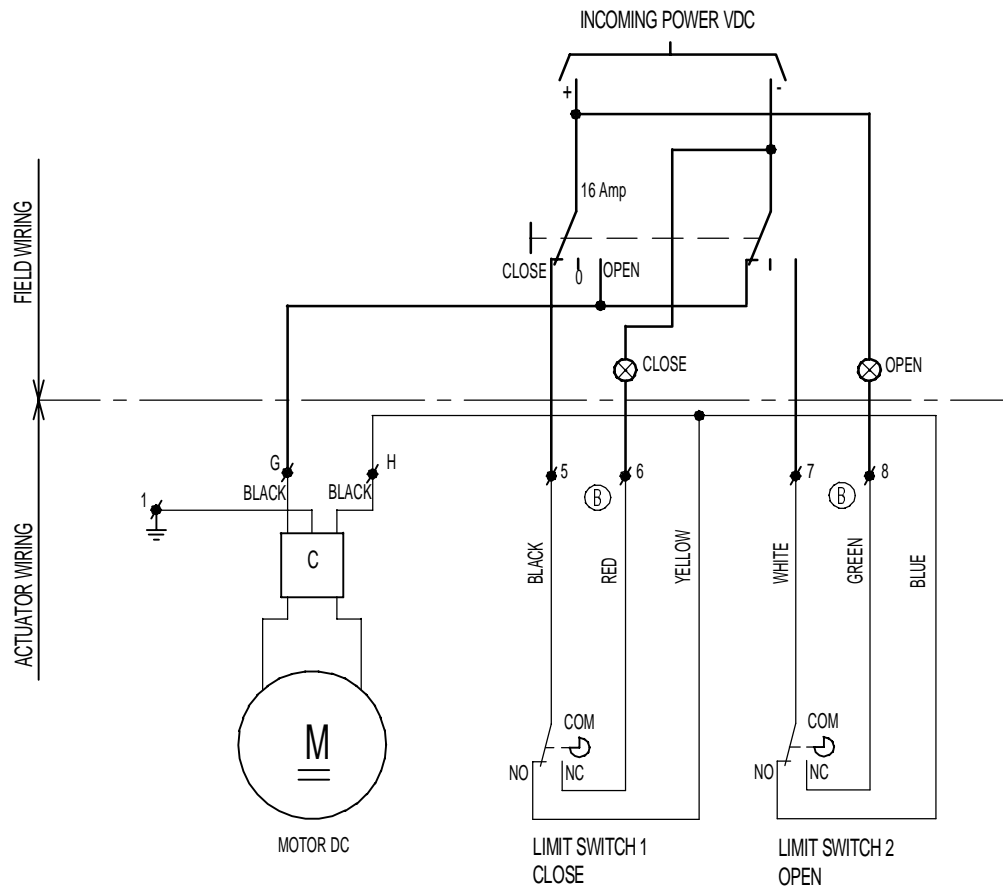


TOLERANCE LIMITS
 UNLESS OTHERWISE SPECIFIED:
 SPELLED:

X. -- = 0.5
 XX. -- = 0.25
 XXX. -- = 0.1
 ANGLES -- = 1/2

- UNLESS OTHERWISE SPECIFIED,
 DIMENSIONS ARE IN MILLIMETERS.
 - REPEAT ALL BORDS AND
 SPARE CONNECTIONS



IMPORTANT
 Each actuator must be powered through its own individual switch or relay contacts to avoid cross feed between two or more actuators.

LIMIT SWITCHES SHOWN IN MID STROKE

EL-O-MATIC INTERNATIONAL LOCATION: HENGELD 101, THE NETHERLANDS		Format : A3	Drw. : AB	Scale : -	Date : 05/10/2000
Material : -		Title : Wiring diagram on/off control DC, ELS18-25 WP			ENOC nr. : H-0782 / 18/01/2001 Date : Par. : RS
Treatment : -		990.40.020			State : Released Rev. : B