

DeltaV™ Live Enterprise View

Version 1.0

DeltaV Live Enterprise View is an application powered by DeltaV Edge, that enables users to view DeltaV Live displays through a web browser—in a secure, read-only way, and with no additional display conversion or engineering effort required. This application extends visibility of the control system beyond the operator station and to the plant network or enterprise level, empowering users with increased situational awareness.



EXTENDING VISIBILITY BEYOND THE CONTROL ROOM



Web-based

Accessible without requiring any client software



Read-only

No ability to send commands or changes to the control system



Secure

Inherits the security architecture of DeltaV Edge



No Conversion Required

Selected DeltaV Live displays reach the app with no rework

ENTERPRISE-WIDE OPERATIONS INTELLIGENCE



Extended Visibility

Access DeltaV Live displays from your desk, the plant floor, or remotely.



Secure Access

Extend access to any role without requiring operator credentials.



Faster Incident Response

See alarm states and affected areas firsthand from wherever you are.

Informed Decisions

Make production calls from current process conditions.



Team Alignment

On-site and remote teams investigate from the same display.



Shift Continuity

Incoming shifts review current plant conditions before taking the helm.



EMERSON

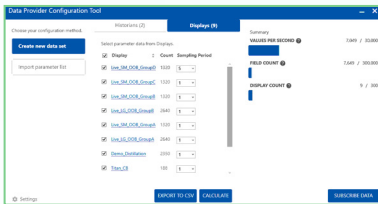
DELTA V

Live Enterprise View

HOW IT WORKS

1

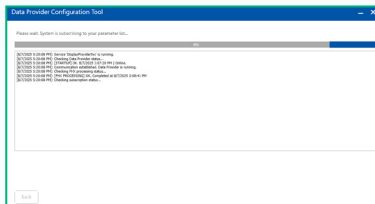
Select Displays



Use the Data Provider to choose which published Live displays are shared through the Edge Node.

2

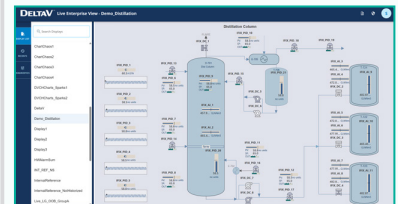
Send to the Edge Node



Subscribed displays are sent to the Edge Node where they become available to enterprise users.

3

Live Enterprise View



Access displays via web-app with datalinks and animations just as they would on an operator console.

WHO IS IT FOR

Production, operations, maintenance, engineering teams and business users who need convenient, secure visibility into process conditions—whether working from an office, a plant floor workstation, or a remote location.

SPECIFICATIONS

Version Compatibility	Requires DeltaV v15.LTS or later and DeltaV Edge Environment v2.2 or later
Display Limit	Up to 500 DeltaV Live displays
Datalink Sampling Rate	Configurable to 1s, 5s, 10s, or 60s
Historical Data	Up to 1 year of data cached on the DeltaV Edge Node
Supported Browsers	Chromium-based browsers like Google Chrome, Microsoft Edge, Brave, Opera
Licensing	Requires DeltaV Edge software and hardware. DeltaV Live Enterprise View is an add-on subscription licensed per concurrent user, scalable from a single user to an unlimited user license.

Contact Us

🌐 www.emerson.com/contactus

©2026, Emerson. All rights reserved.

The Emerson logo is a trademark and service mark of Emerson Electric Co. The DeltaV logo is a mark of one of the Emerson family of companies. All other marks are the property of their respective owners.

The contents of this publication are presented for informational purposes only, and while diligent efforts were made to ensure their accuracy, they are not to be construed as warranties or guarantees, express or implied, regarding the products or services described herein or their use or applicability. All sales are governed by our terms and conditions, which are available on request. We reserve the right to modify or improve the designs or specifications of our products at any time without notice.

DELTA V™


EMERSON™