

# HART® Over PROFIBUS Interface

- Identify, troubleshoot, and resolve device issues using the PROFIBUS network to access HART device diagnostics
- Configure HART devices remotely
- Streamline calibration procedures and documentation activities



*The HART Over PROFIBUS Interface is easy to implement and cost effective because it works with your existing devices and remote I/O.*

## Predictive Maintenance Capability for a Wider Range of Applications

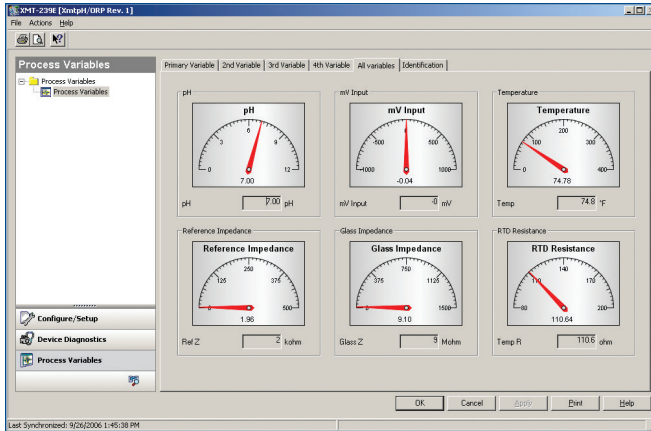
The HART Over PROFIBUS Interface enables you to use AMS Device Manager for diagnostics, configuration, calibration, and documentation activities on HART devices in an online environment where PROFIBUS networks are used with remote I/O. You gain the full benefits of AMS Device Manager, including access to AMS ValveLink™ and other SNAP-ON™ applications, regardless of your host system. With the HART Over PROFIBUS Interface, you get a cost-effective solution for remote configuration and diagnostics without the additional costs of multiplexer installation and wiring. The HART over PROFIBUS Interface is part of Emerson's commitment to develop applications that easily integrate with new and existing equipment from other manufacturers.

## Access the Full Power of your Intelligent Field Devices

The HART Over PROFIBUS Interface helps you get more out of the intelligence from your field devices by giving you easier access to an online AMS Device Manager when you have a PROFIBUS network.

With AMS Device Manager, you can quickly see the health of any connected HART device by checking its status using the diagnostics and monitoring capabilities. The Alert Monitor summary screen provides an overview of all device alerts and gives you the ability to access additional device information for more details.

AMS Device Manager makes configuration fast and easy. Use configuration management to change, store, compare, and transfer device configurations. Also streamline calibration by using AMS Device Manager to define device test schemes, schedule calibrations, and manage device calibrations data.



AMS Device Manager allows you to access multiple process variables in a single view with its new graphical interface.

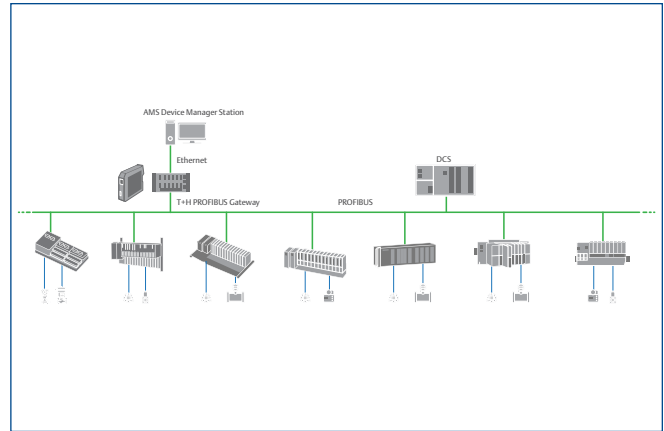
Simplify documentation around device tasks with the AMS Device Manager Audit Trail. In addition, manual entries can be created to document events that may not be automatically captured.

## Interface Architecture

The HART Over PROFIBUS Interface works with your existing devices and remote I/O. This solution provides a bus-level connection to multiple HART devices. The HART devices are connected to a remote I/O system that communicates with the Trebing + Himstedt (T+H) PROFIBUS Gateway via the PROFIBUS DPV1 network.

PROFIBUS DPV1 permits acyclic (HART) data exchange between a DP Master and DP Slave, enabling HART messages to travel across the PROFIBUS network.

The T+H PROFIBUS Gateway is available with Ethernet or PCMCIA connections. The AMS Device Manager system interface accesses the PROFIBUS Gateway by its DNS or IP address.



Gain the benefits of an online AMS Device Manager with the HART Over PROFIBUS solution.

The components required to implement the HART Over PROFIBUS solution include AMS Device Manager version 6.2 or greater, AMS Device Manager HART Over PROFIBUS Interface, T+H PROFIBUS Gateway, and the PROFIBUS remote I/O subsystem with HART I/O modules. Remote I/O subsystems supported by the HART Over PROFIBUS Interface:

- ABB S900
- ABB S800
- CEAG LB
- CEAG FB
- MTL 8000 1/1
- P+F RPI KSD2-GW-PRO
- Siemens ET200M
- Siemens ET200ISP
- STAHL I.S. 1
- Turck Excom

**Emerson**  
**Reliability Solutions**  
12001 Technology Drive  
Eden Prairie, MN 55344 USA

 [www.emerson.com/ams](http://www.emerson.com/ams)

©2017, Emerson. All rights reserved.

The Emerson logo is a trademark and service mark of Emerson Electric Co. AMS, ValveLink, and SNAP-ON are marks of one of the Emerson group of companies. All other marks are the property of their respective owners.

The contents of this publication are presented for informational purposes only, and while every effort has been made to ensure their accuracy, they are not to be construed as warranties or guarantees, express or implied, regarding the products or services described herein or their use or applicability. All sales are governed by our terms and conditions, which are available on request. We reserve the right to modify or improve the designs or specifications of our products at any time without notice.