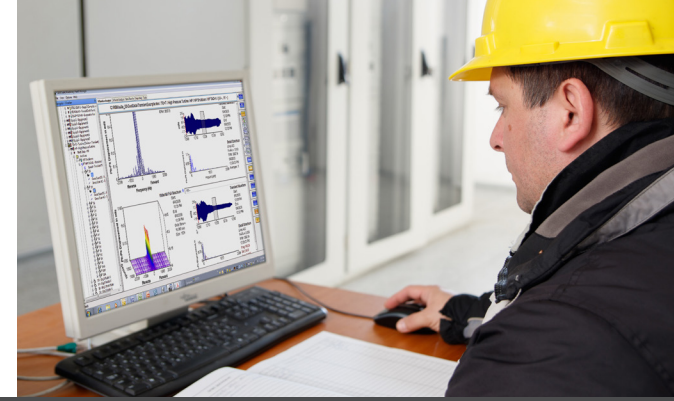


AMS Machinery Manager Trial System (SN13) Notes

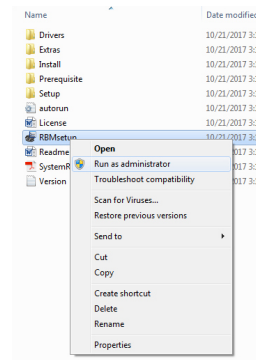


Prior installation

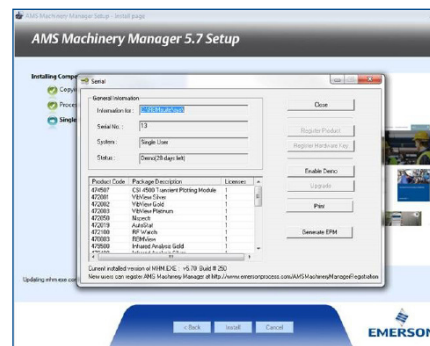
- Please verify that the computer meets the operating system requirements. Refer to the Installation Guide for the list of supported OS.
- Please make sure that the trial license is not yet expired. Should you wish to renew or extend the trial period, please
 - Contact the Emerson sales representative; or
 - Send an email to wwcs.custserv@emerson.com
- The user must have admin privileges in order to install and launch the AMS Machinery manager software to the workstation that they will use. Contact your local IT for support if you get into issues running as admin.

To begin the installation

- Open the Zip file and right click on “RBMsetup” and select “Run as administrator”.



- Accept the license agreement then proceed with the installation.
- The “Serial” screen window will appear. Please click “Enable Demo”.



During and after installation

- If you encounter issues during or after the installation, please contact the Emerson sales representative for assistance.