

Vanessa™ Series 30,000 Triple Offset Valves

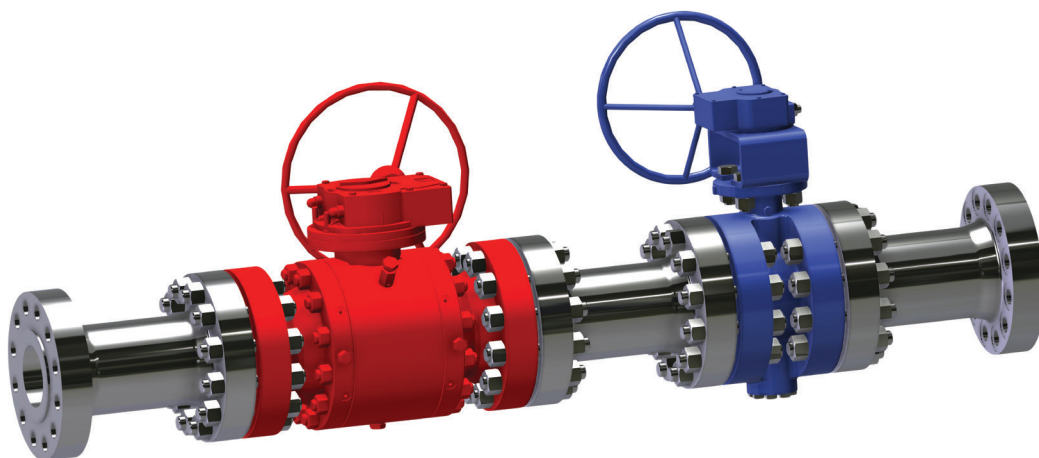
Drive cost out of your projects and ongoing operations with superior technology.

Reverse the tide of dwindling project profitability and rising operational costs

You are continually being challenged to deliver projects with reducing budgets and to run your operations with diminishing resources. Valves represent a significant portion of these installed and ongoing costs as you consider the implications of safety, emissions, size, weight, and maintenance. But what if there was a way to drive improved performance at a lower installed and operational cost?

One decision opens up a world of benefits

Emerson's Vanessa Series 30,000 triple offset valve is your smart solution to replacing ball and gate valves with a highly efficient and effective substitute. The compact design and minimal maintenance requirements of the Series 30,000 reduce the possibility of unscheduled downtime, valve leakages or systemic failures in critical applications - delivering longer life and lower total cost of ownership. Make the switch to the Vanessa Series 30,000 triple offset valve - and see the immediate benefits of a smaller footprint, reduced weight, and lower installation costs.

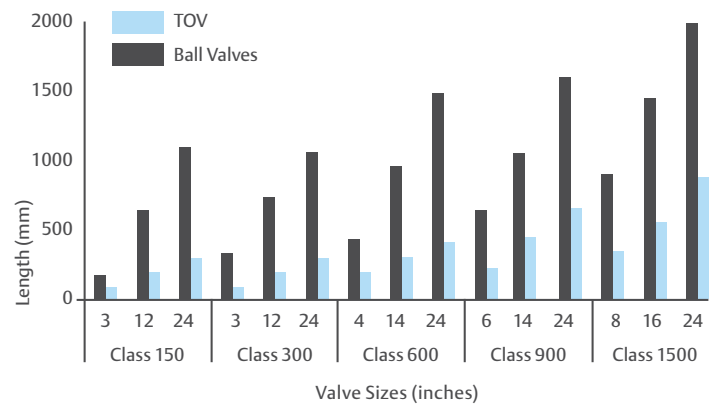
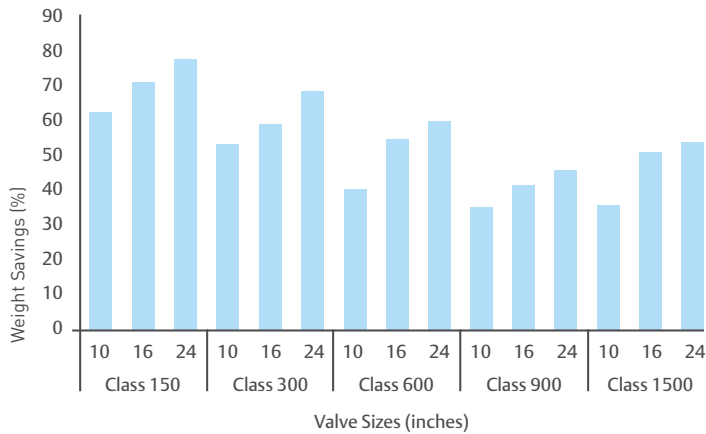


VANESSA™


EMERSON™

Deliver safer, lighter, more compact process designs, all at a lower total installed cost

A comparison between triple offset valves and trunion mounted reduced bore ball valves

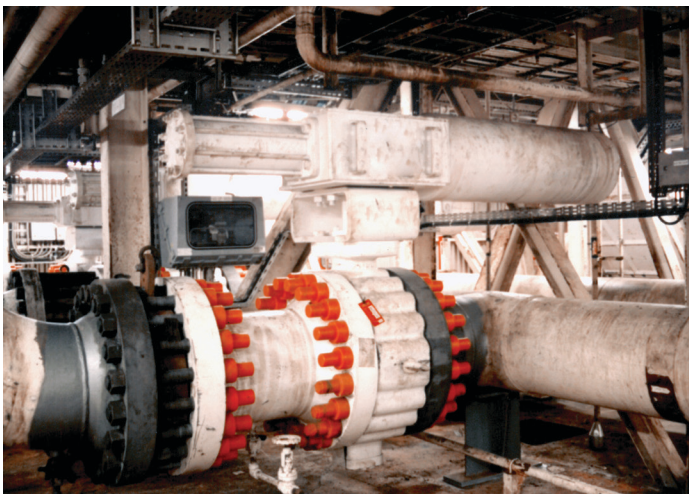


Reduced Weight

Triple offset valves are up to **80% lighter** than a comparable ball valve thanks to lower material use. In class 1500, triple offset valves are more than 50% lighter, which in absolute weight terms is an outstanding difference able to generate significant cost savings.

More Compact

Triple offset valves feature a significantly shorter **face-to-face** which positively impacts the overall plant design. With laying lengths shorter by approximately 2/3 compared to ball valves (API 6D), designers can reduce skid envelope dimensions and multiply the design benefits.



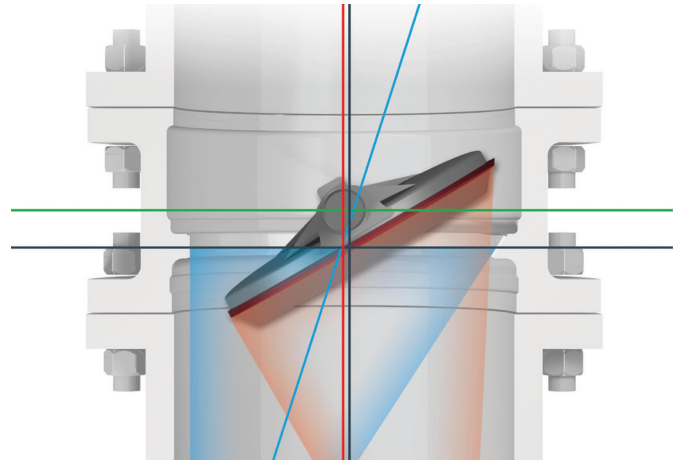
Isolation and Control In One

The valves' isolation and control capabilities can be **combined in a single product**, eliminating the usual requirement for two distinct valves, further reducing installed cost, weight, and footprint.

Improved Safety Integrity Level (SIL)

Vanessa valves can also contribute to reducing systemic failures. Their asymmetric design means they have an **intrinsically higher SIL**, compared to other valves as they are capable of supporting the protecting function even in case of actuator failure.

Improve your process performance and reduce operating costs



Simple Change Out

You can switch to Vanessa TOVs for improved process performance without the need for piping modification. Vanessa long face-to-face valves are designed in accordance to ASME B16.10 for **simplified replacement upgrade** of gate, ball, and globe valves.

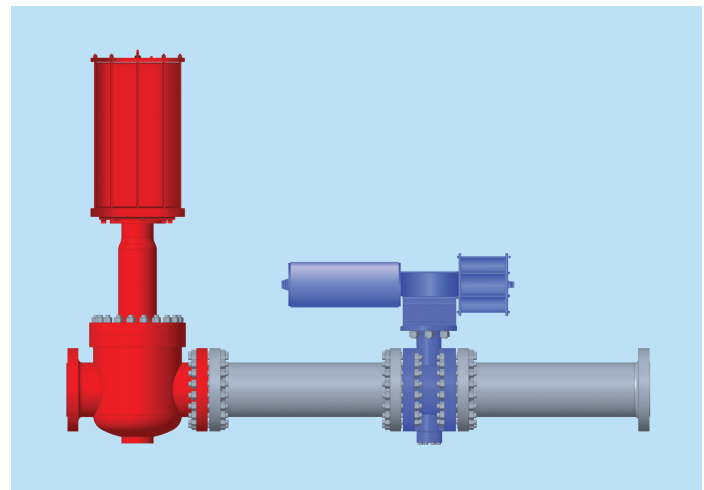
No Required Maintenance

A non-rubbing design and zero cavities for solids accumulation **eliminates the need for planned maintenance** in most applications. For mandatory maintenance, simple, interchangeable spares are available at a lower cost compared to gate valves.



Minimized Fugitive Emissions

Vanessa valves improve process performance and reduce fugitive emissions with their quarter turn rotation design that **eliminates any negative effects on packing** caused by rising stems, such as extrusion and abrasion.



Lower Cost of Actuation

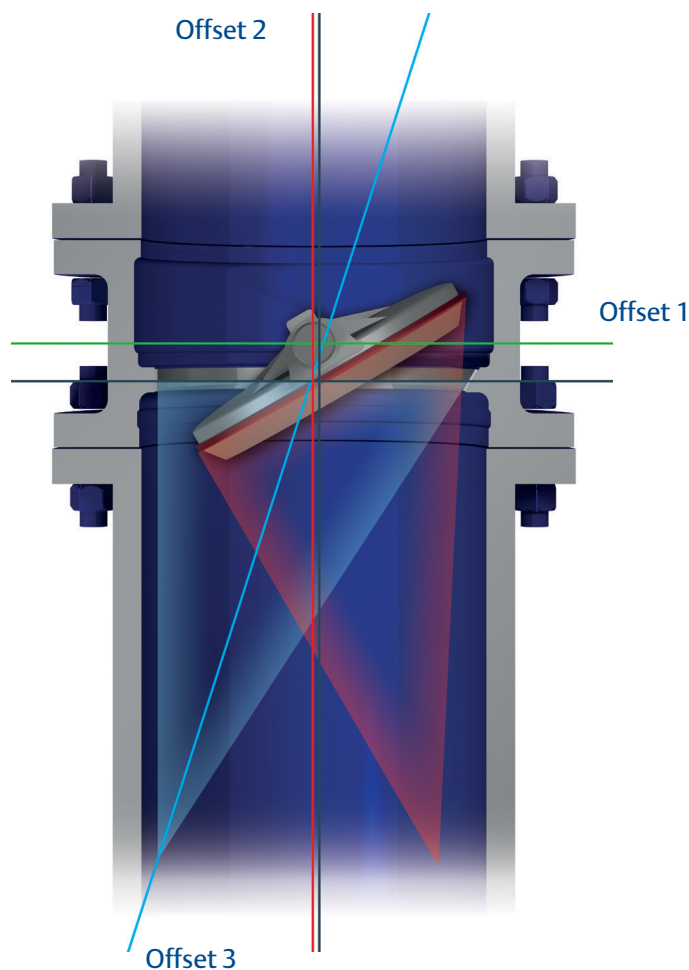
Thanks to the non-rubbing, metal-to-metal, quarter turn rotation, Vanessa valves feature a lower and consistent torque demand over the entire lifecycle, allowing for minimized safety factors and **therefore reducing the actuator footprint and sizing**.

Developing the world's leading triple offset valve technology

Emerson first developed the triple offset valve concept more than 40 years ago, and the innovation hasn't stopped since.

The Vanessa Series 30,000 is the ultimate process valve - better equipped to deliver the metal-to-metal torque seated, quarter turn non-rubbing rotation your applications demand.

Our experienced people and state-of-the-art manufacturing facilities strive to deliver expert customer service and precision engineering so can benefit from reduced costs and superior technology.



Click or scan the QR code with your smartphone to learn more about how this innovative design works.



Emerson Automation Solutions
Neuhofstrasse 19a, P.O. Box
1461, Baar, CH 6340
Switzerland
T +41 41 768 6111
ContactUs@Emerson.com
Emerson.com/FinalControl

© 2018 Emerson Electric Co. All rights reserved.

Neither Emerson, Emerson Automation Solutions, nor any of their affiliated entities assumes responsibility for the selection, use or maintenance of any product. Responsibility for proper selection, use, and maintenance of any product remains solely with the purchaser and end user.

Vanessa is a mark owned by one of the companies in the Emerson Automation Solutions business unit of Emerson Electric Co. Emerson Automation Solutions, Emerson and the Emerson logo are trademarks and service marks of Emerson Electric Co. All other marks are the property of their respective owners.

The contents of this publication are presented for informational purposes only, and while every effort has been made to ensure their accuracy, they are not to be construed as warranties or guarantees, express or implied, regarding the products or services described herein or their use or applicability. All sales are governed by our terms and conditions, which are available upon request. We reserve the right to modify or improve the designs or specifications of such products at any time without notice.

VANESSA™



CONSIDER IT SOLVED™