

# Copper Winding OEM Enhances Customer Experience and Flexibility with Movicon™ HMI/SCADA

## RESULTS

- Highly detailed graphical interface and ease of use helps differentiate Sipro among system integrators in its field
- Detailed production reports allow rapid identification of the source of product rejects and speed maintenance intervention
- Analytics, historization and reporting allow both accountability and continuous operational improvement
- The Movicon SCADA platform allows rapid, easy integration of disparate systems for maximum customer flexibility



## APPLICATION

Copper winding machinery manufacturing.

## CUSTOMER

Sipro, a winding and assembly solutions manufacturer in Seveso, Italy.

## CHALLENGE

For an OEM such as Sipro, a manufacturer of copper winding machinery, it was critical to make its machines as fast, intuitive and accurate as possible for its end users to operate. The HMI software the company previously employed, while providing efficient machine operation, was not highly graphical, thus making it complex to use. In addition, it had very limited ability to implement process analysis or provide historization. Sipro needed a SCADA-based software to overcome these challenges in order to speed and improve its manufacturing, as well as provide the ability to integrate disparate systems into a single software for maximum customer flexibility.

*“The beautiful, user friendly and eye-catching vector graphics in the Movicon HMI/SCADA set our machines apart in the world of copper winding.”*

**Luca Rovaris**

Customer Service Manager for Hardware, Software and Support  
Sipro S.r.l.

## SOLUTION

Sipro conducted an industry-wide analysis of SCADA-based software, and selected Movicon SCADA as the most flexible, scalable and easy-to-use solution available. Using the Movicon platform gives Sipro much-needed capabilities it did not have previously, such as the ability to move interpolated axes with up to four motors, to manage timers and counters, command digital outputs and test digital inputs.

The highly intuitive graphics of the Movicon-based system are easy to understand and easy to use for machine operators, as well as provide straightforward manual commands in the units. The Movicon system permits data historization and storage for later evaluation and production reporting and analysis on the machine alarms to detect malfunctions and identify issues. As a result, users can react rapidly to problems during production and respond promptly. The software provides easy and clear recipe management and compilation. The solution also enables analysis and tracing of machine users and all types of variables that could impact the quality of the finished product.

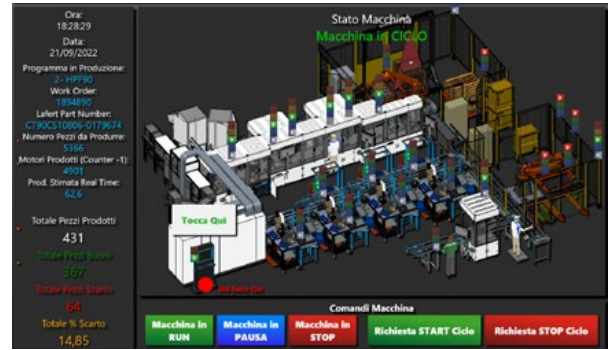
Among Sipro's first applications of the Movicon-based system was for an electric motor manufacturer. In this case, Sipro employed a main client/server station to communicate with seven programmable logic controllers (PLCs) on the machine, for a total of 50,000 tags, plus client stations located along the line to ensure a good view of the five machine blocks. All devices were connected to each other via an Ethernet network and CodeSys was the communication driver between the Movicon platform and the PLCs.

Sipro continues to integrate the Movicon platform into its systems for customers in a range of industries including automotive, the home appliance sector, hydraulics, and food manufacturing equipment, among others. In addition, the company plans to add the Pro.Lean™ module for OEE analysis in the near future.

## RESOURCES

[www.Emerson.com/Movicon](http://www.Emerson.com/Movicon)

[www.Emerson.com/contactus](http://www.Emerson.com/contactus)



*"When the Movicon software was employed, the easy and intuitive development environment immediately overcame shortcomings of the old HMI system."*

### Luca Rovaris

Customer Service Manager for Hardware, Software and Support  
Sipro S.r.l.

© 2023 Emerson Electric Co. All rights reserved.

The Emerson logo is a trademark and service mark of Emerson Electric Co. Brand logotype are registered trademarks of one of the Emerson family of companies. All other marks are the property of their respective owners.