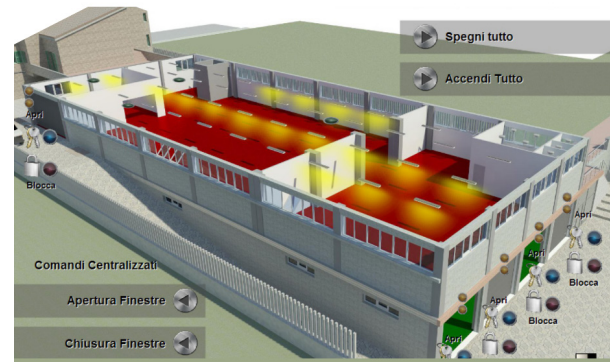


Movicon Software Platform Automates both Manufacturing and Residential Buildings for Italian Fabric Bonding Company

RESULTS

- Lower energy costs in both the factory and residence
- Reduction of production waste and factory downtime
- Increased efficiency and productivity
- Reduction in water usage through conservation and reuse
- Increased worker safety through air management and improved alarms



APPLICATION

Factory and residential building automation.

CUSTOMER

Samuel Tailored Bonding – Italy, Marche region.

CHALLENGE

Samuel Tailored Bonding specializes in the sartorial bonding of leather, faux leather and various types of fabrics for apparel, footwear, furniture and automotive. Since the early '90s, the company has focused on eco-sustainability as a principal goal in all aspects of its manufacturing. As the company grew, it needed to increase its factory productivity and throughput while still maintaining its focus on eco-sustainability. Because the factory was located on the same property as its residences, the company wanted to make similar improvements to the residences as well. The goals were to increase the physical security of both the house and factory, thereby enhancing worker and resident safety. Operators also wanted to reduce the startup time and shutdown time of the factory to improve efficiency, while at the same time reducing energy consumption and costs through automation of air flow and conditioning, lighting, opening and closing of windows and shutters, and more. Irrigation and water consumption also needed to be controlled by the systems.

“The Movicon platform is the most complete and flexible platform available on the market. Its capabilities cover almost all situations that could occur in a project on industrial automation and beyond.”

Eng. Franco Mannocchi
CEO
Arking Consulting

SOLUTION

To achieve the goals, Samuel Tailored Bonding approached system integrator Arking Consulting to develop systems that could automate a wide range of building functions in the manufacturing plant and the residences. Arking Consulting developed two independent and separate systems: one for the residences and one for the factory.

The systems are connected to the field through Intermod hardware.

The project uses the Movicon™ platform to manage automation in both the residences and factory. The Movicon platform runs on two dedicated machines running Windows 10 operating systems and IP65 capacitive touch-screen interface screens.

The central PC of each site includes minimum logic to continuously execute preset commands if the PC loses communication with the field PLC. The two systems, factory and residence, are connected in a LAN network to exchange information and share resources. The Movicon Web Client option allows remote access through the mobile app.

For Samuel Tailored Bonding, specific and simplified synoptics were created to more easily visualize and control building functions from a smartphone. Alarms and notifications are also sent to phones through a GSM modem thanks to the Movicon Alarm Dispatcher function.

The Movicon system manages every aspect of building operation from the easiest to the most complicated, offering Samuel Tailored Bonding an appropriate tool to advance their eco-conscious efforts.

This implementation led to the reduction of waste and increase of security, comfort and well-being of employees and residents, which were key factors in its success.

RESOURCES

Movicon

www.Emerson.com/Movicon

©2022, Emerson. All rights reserved.

The Emerson logo is a trademark and service mark of Emerson Electric Co. The Movicon logo is a mark of one of the Emerson family of companies. All other marks are the property of their respective owners.

The contents of this publication are presented for informational purposes only, and while diligent efforts were made to ensure their accuracy, they are not to be construed as warranties or guarantees, express or implied, regarding the products or services described herein or their use or applicability. All sales are governed by our terms and conditions, which are available on request. We reserve the right to modify or improve the designs or specifications of our products at any time without notice.

Contact Us

🌐 www.emerson.com/contactus